



Manufacturing, Inc.



- Overhead Holders & Stops
- Hospital Push/Pull Latches
- Electro-Magnetic Door Holders
- Electrical Power Transfer Products
- Aluminum Continuous Geared Hinges
- Stainless Steel Edge Guards
- Pivots & Pivot Sets
- Rescue Hardware
- Coordinators, Flush Bolts & Roller Latches
- Slide Bolts, Surface Bolts & Miscellaneous Products



Stainless Steel Continuous Pin & Barrel Hinges

Stainless Steel Continuous Pin & Barrel Hinges Cross-Reference Chart

Type	ABH*	ASSA Abloy*		Hager*	Stanley*	Ives*
		Markar*	McKinney*			
Full Concealed	A500	FM300	MCK-FM300	790-900	651	700
	A5500WT	FM300WT	-	-	-	-
	A505	HG305	MCK-HG305	790-905	652	705
	A510	HG310	MCK-HG310	-	-	-
	A511	HG311	MCK-HG311	790-911	656	711
	A515	HG315	MCK-HG315	790-915	653	715
	A526	HG326	MCK-HG326	790-926	-	-
	A529	HG329	-	790-929	-	-
	A5500	FM3500	MCK-FM3500	-	651HD	-
	A5505	HG3505	MCK-HG3505	-	652HD	-
	A5515	-	-	-	653HD	-
Full Surface	A502	FS302	MCK-FS302	-	657	702
Half Surface	A503	HS303	MCK-HS303	790-903	-	-
Half Mortise	A504	HM304	MCK-HM304	790-904	654	-
	A506	HG306	MCK-HG306	790-906	655	-
Type	ABH*	ASSA Abloy*		Hager*	Stanley*	Ives*
		Markar*	McKinney*			
Hospital Tip	HT	HT-MP	HT	HT	HT	HT
Dutch Door	DD	DDP-MP	DDP	DD	DD	DD
Power Transfer Cut-Out	PT	CTP	EPT	EPT	EPT	EPT
Security Pins	SP	AVAIL	SECURITY STUDS	-	AVAIL	-
Sheared Leaf	SL	AVAIL	SHEARED LEAF	-	AVAIL	-
Adjustable Studs	AS	AS	AS	-	-	-
Clinical Bearings	CB	MB	MB	-	-	-
Lead-Lined Cover	LL	LL-MP	LL	-	-	-
Raised Barrel (Swaged)	RB	RB-MP	RB	AVAIL	RB	-
Concealed Electrical Thru-Wire (number indicates quantity of wires)	TW4	-	CC-4	ETW-4	-	TW4
	TW8	-	CC-8	ETW-8	CE-600	TW8
	TW12	-	-	-	-	-
Concealed Electrical Thru-Wires with Molex® Connectors - EZ Connect (number indicates quantity of wires)	EZ4	EL4	EL4	ETW-4	-	TW4
	EZ8	EL8	EL8	ETW-8	-	TW8
	EZ12	EL12	EL12	-	-	-
Moveable Panel for Electrical Access Prep	M	ETAP	ETAP	-	-	-
Contact Switch with Concealed Electrical Thru-Wires (number indicates quantity of wires)	CT4	-	-	-	-	-
	CT8	-	-	-	-	-
	CT12	-	-	-	-	-
Adjustable Monitoring Switch	AMS	AMS	AMS	-	-	-

*Brand names are trademarks or registered trademarks of their respective companies.

Table of Contents

General Info

Standard Features	G-2
Warranty	G-2
Fire Rating	G-2
How to Order	G-2
Hinge Types	G-3
Door Clearance Chart	G-4
Parts	G-5
Electrical Options	G-6
Non-Electrical Options	G-7

Full Concealed Models

A500	G-8
A500RB	G-8
A5500WT	G-9
A505	G-9
A505RB	G-10
A510	G-10
A511	G-11
A515	G-11
A515RB	G-12
A526	G-12
A529	G-13
A5500	G-13
A5515	G-14
A5505	G-14

Half Mortise Models

A504	G-15
A506	G-15

Half Surface Models

A503	G-16
------------	------

Full Surface Models

A502	G-16
------------	------



Stainless Steel Continuous Pin & Barrel Hinges



Innovation, Quality,
Customer Service...

General Info

Standard Features

- **Clinical Bearings** - All hinges are manufactured with clinical bearings to provide a more permanent solution to lubricating hinges and help prevent build-up of dust and other foreign substances around the knuckles of the hinge.
- **Welded End Pins** - Both the top and bottom end pins are permanently welded to the hinge so the pin will not loosen after years of use.
- Continuous hinges alleviate most common alignment problems such as door binding and sagging by evenly distributing the weight throughout the entire door and frame
- Provides extra security by eliminating the gap between the door and the frame; thus, disallowing the ability to pry the opening
- All hinges are surface applied - no mortising of the door or frame required
- Will cover old butt hinge cut-outs
- Meets and/or exceeds ANSI 156.26, Grade 1
- Templated hinges - hole patterns for the standard lengths remain consistent from one order to the next
- 3/16" diameter stainless steel pin
- Base material is heavy duty 14 gauge 304 grade stainless steel (except for A5500, A5515 and A5505 models which are heavier duty 12 gauge stainless steel)

Warranty

ABH provides a **limited lifetime warranty** on its hinges for the lifetime of the door opening, except for electrically modified hinges which carry a five year limited warranty.

Fire Rating

All ABH stainless steel pin & barrel hinge models have been tested and certified by UL® (U.S.A. and Canada) for up to and including a 3-Hour Fire Listing on all 4'0" x 10'0" doors:

- 20 minutes - wood doors
- 90 minutes - hollow metal and
 - composite core
 - wood fire doors
- 3 hours - hollow metal doors

Reinforcement:

Door Side: Not required for door weight up to 200lbs. ABH recommends minimum 12 gauge plate/channel for Heavier doors.

Frame Side: Not required for door weight up to 200lbs. ABH recommends a minimum 14 to 16 gauge channel for Heavier doors.

How to Order

Example : A500 083 US32D TW4 M

Model:

Full Concealed

- A500 • A510 • A529
- A500RB • A511 • A5500
- A500WT • A515 • A5505
- A505 • A515RB • A5515
- A505RB • A526

Half Surface

- A503

Half Mortise

- A504
- A506

Full Surface

- A502

Hinge Height:

- 078 = 78-3/4"
- 083 = 83-1/8"
- 085 = 85"
- 095 = 95"
- 118 = 118-3/4"

Finish:

- US32D = Satin Stainless Steel
- US32 = Bright Stainless Steel
- Custom Finish

Options, if Applicable:

(See pages G-6 to G-7 for details and availability)

- | | | | | |
|--------|--------|----------|----------|----------------|
| • TW4 | • M | • HT | • CUT | • SL |
| • TW8 | • PT | • DD | • SNB | • ADB |
| • TW12 | • AMS | • STUD | • 1/2 WS | • CUSTOM HOLES |
| • EZ4 | • CT4 | • AS | • AWS | • NO HOLES |
| • EZ8 | • CT8 | • SEC | • LL | |
| • EZ12 | • CT12 | • SPLICE | | |



Hinge Types

Full Concealed - Both hinge leaves are concealed between the rabbet of the frame and the door.

- Standard fasteners provided (door and frame leaves):
 - 10-24 x $\frac{7}{8}$ " self-drilling, thread forming undercut tek screws
 - #10 x 1- $\frac{1}{4}$ " undercut sheet metal screws (for wood applications)

Half Mortise - The frame leaf is mounted to the face of the frame and the door leaf is concealed between the rabbet of the frame and the door.

- Standard fasteners provided:
 - Door leaf is provided with:
 - 10-24 x $\frac{7}{8}$ " self-drilling, thread forming undercut tek screws
 - #10 x 1- $\frac{1}{4}$ " undercut wood screws (for wood applications)
 - Frame leaf is provided with:
 - $\frac{1}{4}$ -20 x $\frac{3}{4}$ " pan head self-drilling tek screws
 - Cover clips for the fastener cover

Half Surface - The frame leaf is concealed between the rabbet of the frame and the door and the door leaf is mounted to the face of the door.

- Standard fasteners provided:
 - Door leaf is provided with:
 - $\frac{1}{4}$ -20 x $\frac{3}{4}$ " pan head self-drilling tek screws
 - Cover clips for the fastener cover
 - Frame leaf is provided with:
 - 10-24 x $\frac{7}{8}$ " self-drilling, thread forming undercut tek screws
 - #10 x 1- $\frac{1}{4}$ " undercut wood screws (for wood applications)

Full Surface - Frame leaf is mounted to the face of the frame and the door leaf is mounted to the face of the door.

- Standard fasteners provided (door and frame leaves):
 - $\frac{1}{4}$ -20 x $\frac{3}{4}$ " pan head self-drilling tek screws
 - Cover clips for the fastener cover

Swing Clear

A swing clear hinge allows the door to swing completely clear of the door opening. Typically used in medical centers where the access area must be the entire door width, it allows for large items such as gurneys and wheelchairs to pass. ABH offers the **A511**, **A526** and **A529** swing clear models.

Raised Barrel

The hinge barrel is offset away from the hinge jamb on a raised barrel hinge. They are used when the door is set back in a deep reveal and there is not enough room for the hinge barrel to extend past the face of the frame. **ABH offers the A500RB, A505RB and A515RB raised barrel models.**



Full Concealed



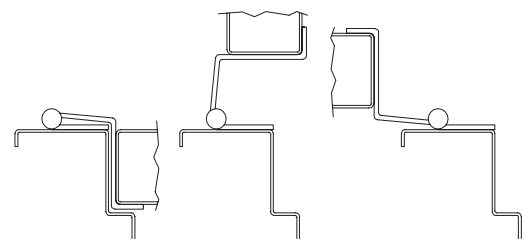
Half Mortise



Half Surface



Full Surface

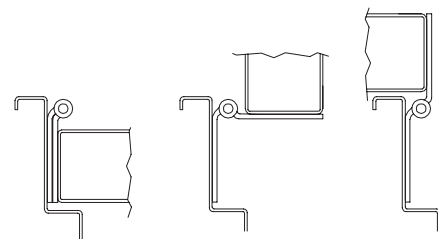


0° Opening

90° Opening

180° Opening

A511 Full Concealed, Swing Clear



0° Opening

90° Opening


180° Opening

A500RB Full Concealed, Raised Barrel



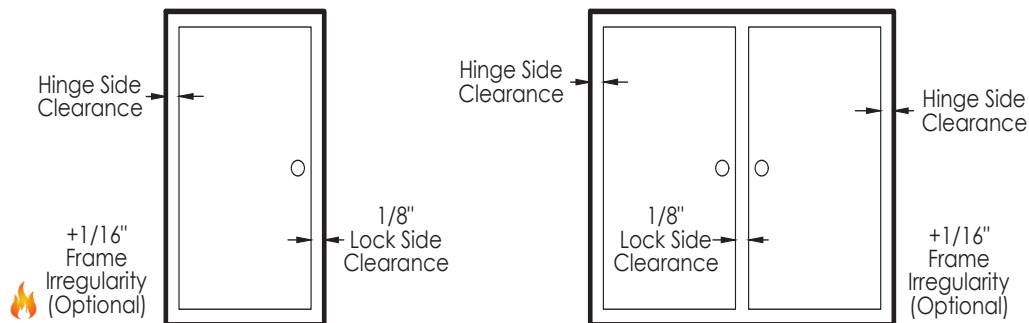
Stainless Steel Continuous Pin & Barrel Hinges

Door Clearance Chart

Single Door- Square Edged							
HINGE MODEL	HINGE SIDE CLEARANCE (Single)	+	LOCK SIDE CLEARANCE	+	***FRAME IRREGULARITY (OPTIONAL) 	=	SINGLE DOOR TOTAL UNDERSIZE
A500*, A500RB, A510**, A515, A515RB, A525, A529, AC500*	1/4"	+	1/8"	+	1/16"	=	7/16"
A505**, A505RB**, A526**, A5500*, A5515, A5505	5/16"	+	1/8"	+	1/16"	=	1/2"
A503, A504*, A506, A511	1/8"	+	1/8"	+	1/16"	=	5/16"
A502	3/32"	+	1/8"	+	1/16"	=	9/32"
Pairs of Doors- Square Edged							
HINGE MODEL	HINGE SIDE CLEARANCE (Pair)	+	LOCK SIDE CLEARANCE	+	***FRAME IRREGULARITY (OPTIONAL)	=	PAIR OF DOORS TOTAL UNDERSIZE
A500*, A500RB, A510**, A515, A515RB, A529, AC500*	1/2"	+	1/8"	+	1/16"	=	11/16"
A505**, A505RB**, A526**, A5500*, A5515, A5505	5/8"	+	1/8"	+	1/16"	=	13/16"
A503, A504*, A506, A511	1/4"	+	1/8"	+	1/16"	=	7/16"
A502	3/16"	+	1/8"	+	1/16"	=	3/8"

Single Door

Pair of Door



* For beveled door, standard clearance is applied to the high side of the door. Refer to template.
 ** When using the optional "AS" Adjustable Studs, add 1/8" additional for adjustment clearance. (A505, A510 & A526 Only)
 *** 1/16" Frame Irregularity Allowance, Optional and included in all Total Door Undersize for single and pairs of doors

 Frame irregularity not permitted by NFPA80 rated doors.

Stainless Steel Continuous Pin & Barrel Hinges



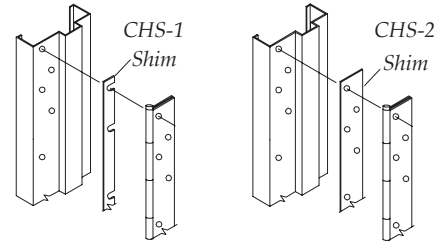
Innovation, Quality,
Customer Service...

Parts

Continuous Hinge Shims

ABH offers two different types of hinge shims, both made of 16 gauge stainless steel material. Available in standard hinge sizes (78- $\frac{3}{4}$ ", 83- $\frac{1}{8}$ ", 85", 95", 118- $\frac{3}{4}$ "). **Specify height when ordering.**

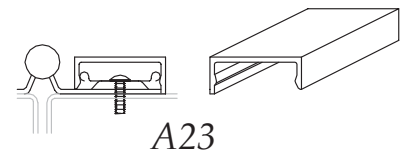
- **CHS-1** – Slip-in installation
- **CHS-2** – Hinge must be removed for installation



Replacement Covers

Available for full surface, half mortise and half surface models, replacement covers are supplied with allen head set screw and wrench for installation. They are supplied in aluminum anodized finish and for standard hinge sizes only (78- $\frac{3}{4}$ ", 83- $\frac{1}{8}$ ", 85", 95", 118- $\frac{3}{4}$ "). **Specify height when ordering.**

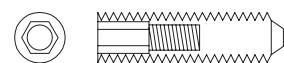
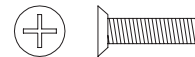
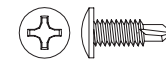
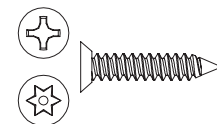
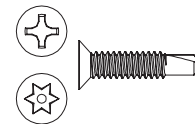
- **A23** – Hinge leaf cover for A502, A503, A504 & A506



Fasteners - Bulk Packed

– sold in quantities of 500 only

- **SSH1024FHSDS-500** - 10-24 x $\frac{7}{8}$ " Phillips flat head, undercut, self-drilling, thread-forming tek machine screw
- **SSH1024FHSDSSEC-500** - 10-24 x $\frac{7}{8}$ " Pin-in torx flat head, undercut, self-drilling, thread-forming tek machine security screw
- **SSH10FHWS-500** - #10 x 1- $\frac{1}{4}$ " Phillips flat head, undercut wood screw
- **SSH10FHWSSEC-500** - #10 x 1- $\frac{1}{4}$ " Pin-in torx flat head, undercut wood security screw
- **SSH1/420RHSDS-500** - $\frac{1}{4}$ -20 x $\frac{3}{4}$ " Round head self-drilling, thread-forming tek machine screw
- **SSH-AS-WD-500** - Adjustable Stud with 10-32 internal thread, 1- $\frac{3}{8}$ " long, right hand thread for wood door with 10-32 x $\frac{3}{4}$ " Phillips flat head, undercut machine screw
- **SSH-AS-MD-500** - Adjustable Stud with 10-32 internal thread, 1- $\frac{3}{8}$ " long, left hand thread for metal door with 10-32 x $\frac{3}{4}$ " Phillips flat head, undercut machine screw



Screw Packs

– Specify the following when ordering:

- Hinge model
- Hinge length
- Door material & frame material
- **Example:** A500083-SCR x MDMF



Architectural Builders Hardware Manufacturing, Inc.
1222 Ardmore Avenue, Itasca, IL 60143
Tel: 630-875-9900 • Fax: 630-875-9918 / 800-932-9224
Web: www.abhmfg.com • Email: abhinfo@abhmfg.com

Electrical Options

“TW” - Concealed Electrical Thru-Wire

Transfers power from the frame to the door in a discreet manner.

- **TW4** - (4) 30 AWG wires
- **TW8** - (8) 30 AWG wires
- **TW12** - (12) 30 AWG wires

“EZ” - Concealed Electrical Thru-Wire with Molex® Connectors

Transfers power from the frame to the door in a discreet manner. Molex® plug-in connectors provided for installation ease.

- **EZ4** - (4) 30 AWG wires with Molex® connectors
- **EZ8** - (8) 30 AWG wires with Molex® connectors
- **EZ12** - (12) 30 AWG wires with Molex® connectors

“M” - Moveable Electrical Access Prep

Hinge is supplied as one complete piece (pin and barrel are continuous), but both hinge leaves are cut to allow access to the electrical section without having to uninstall the hinge.

“PT” - Cut-out Prep for Power Transfer

Hinge is prepped for the use electrical power transfer to be used - must specify which model power transfer unit being used. See ABH Electrical Power Transfer section in the catalog for available models (sold separately).

“AMS” - Adjustable Monitoring Switch

Adjustable button switch is installed in the frame leaf to monitor the door position. Specify handing.

“CT” Concealed Electrical Thru-Wire and Monitor Switch

Monitor switch is installed in the frame leaf to monitor the door position while the wires transfer power from the frame to the door in a discreet manner.

- **CT4** - (4) 30 AWG wires
- **CT8** - (8) 30 AWG wires
- **CT12** - (12) 30 AWG wires

Electrical Options - Compatibility Chart							
Hinge Model		TW	EZ	M	PT	AMS	CT
Full Concealed	A500	●	●	●	●	●	●
	A500RB	●	●	●	●	●	●
	A5500WT	●	●	●	●	●	●
	A505	●	●	●	●	●	●
	A505RB	●	●	●	●	●	●
	A510				●		
	A511				●		
	A515	●	●	●	●	●	●
	A515RB	●	●	●	●	●	●
	A526				●		
	A529				●		
	A5500	●	●	●	●	●	●
	A5515	●	●	●	●	●	●
A5505	●	●	●	●	●	●	
Half Mortise	A504				●		
	A506				●		
Half Surface	A503				●		
Full Surface	A502						



Stainless Steel Continuous Pin & Barrel Hinges



Innovation, Quality,
Customer Service...

Non - Electrical Options

“CUT” - Cut to Custom Length

If a non-standard length hinge is required, ABH will cut from the bottom of the hinge to the desired length as long as it does not interfere with a screw hole.

Specify length and handing.

“SPLICE” - Spliced Hinge

For hinges exceeding 118-3/4”, ABH splices two separate lengths with an alternately split stainless steel pin that holds the barrel together. **Specify length and handing.**

“HT” - Welded Hospital Tip

Top of the hinge barrel is cut at a 45° angle and then welded to help provide and support a safer environment in hospitals and other institutions.

Specify handing.

“DD” - Dutch Door

Modified door leaf cut to fit a dutch door application. Go online for order form or, specify top and bottom door leaf heights as well as clearance required between top and bottom and handing when ordering.

“STUD” - Security Studs

1/2” diameter stainless steel studs are permanently mounted to the frame leaf projecting 1/4” and extend into the door leaf for added security.

“AS” - Adjustable Studs

Threaded studs are supplied for hinges with door edge guards on both faces of the door to help correct door alignment issues up to 3/8”. Additional door reinforcement required. **Specify wood or metal door.**

“SEC” - Security Fasteners

Security fasteners are supplied in lieu of standard fasteners for all exposed areas. **Specify wood or metal door and frame**

“SNB” - Sex Bolts

When using on wood doors, sex bolts are provided for the surface mounted door portion.

“LL” - Lead-Lined

Lead is provided for the door portion fastener cover for half surface and full surface hinges.

“SL” - Sheared Leaf

Concealed leaf is sheared to accommodate a 1-3/8” thick door.

“ADB” - Cut for Automatic Door Bottom

Specify automatic door bottom model when ordering.

“CUSTOM HOLE”

Contact factory with custom mounting hole locations desired for unusual frame and/or door conditions. Restrictions apply.

“NO HOLE”

Contact factory for hinge without mounting holes.

“CUSTOM FINISH”

Custom powder coated finishes available – contact factory for details. Customer color sample approval will be required prior to fabrication.

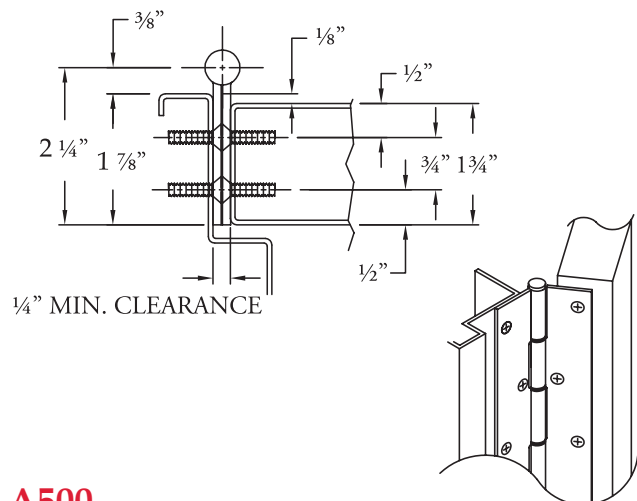
Non-Electrical Options - Compatibility Chart

Hinge Model		CUT	SPLICE	HT	DD	STUD	AS	SEC	SNB	LL	SL	ADB	CUSTOM HOLES	NO HOLES	CUSTOM FINISH
Full Concealed	A500	•	•	•	•	•	•	•	•	•	•	•	•	•	•
	A500RB	•	•	•	•	•	•	•	•	•	•	•	•	•	•
	A550WT	•	•	•	•	•	•	•	•	•	•	•	•	•	•
	A505	•	•	•	•	•	•	•	•	•	•	•	•	•	•
	A505RB	•	•	•	•	•	•	•	•	•	•	•	•	•	•
	A510	•	•	•	•	•	•	•	•	•	•	•	•	•	•
	A511	•	•	•	•	•	•	•	•	•	•	•	•	•	•
	A515	•	•	•	•	•	•	•	•	•	•	•	•	•	•
	A515RB	•	•	•	•	•	•	•	•	•	•	•	•	•	•
	A526	•	•	•	•	•	•	•	•	•	•	•	•	•	•
	A529	•	•	•	•	•	•	•	•	•	•	•	•	•	•
	A5500	•	•	•	•	•	•	•	•	•	•	•	•	•	•
A5515	•	•	•	•	•	•	•	•	•	•	•	•	•	•	
A5505	•	•	•	•	•	•	•	•	•	•	•	•	•	•	
Half Mortise	A504	•	•	•	•	•	•	•	•	•	•	•	•	•	
	A506	•	•	•	•	•	•	•	•	•	•	•	•	•	
Half Surface	A503	•	•	•	•	•	•	•	•	•	•	•	•	•	
Full Surface	A502	•	•	•	•	•	•	•	•	•	•	•	•	•	



Architectural Builders Hardware Manufacturing, Inc.
1222 Ardmore Avenue, Itasca, IL 60143
Tel: 630-875-9900 • Fax: 630-875-9918 / 800-932-9224
Web: www.abhmfg.com • Email: abhinfo@abhmfg.com

Full Concealed



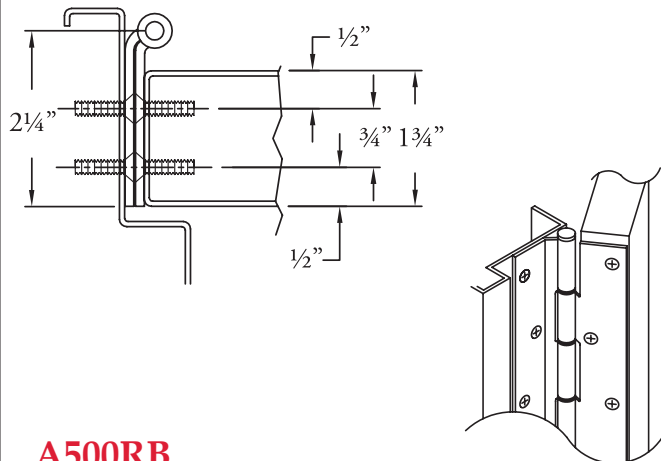
A500

Standard Features

- Full concealed, heavy duty
- 1/8" door inset
- 48" door width maximum
- 600 lbs. door weight maximum
- **Fasteners:** 10-24 x 7/8" undercut, self-drilling, thread-forming tek machine screws, stainless steel and #10 x 1-1/4" undercut wood screws, stainless steel
- **Lengths:** 78-3/4", 83-1/8", 85", 95" and 118-3/4"
- **Finishes:** US32D Satin Stainless Steel or US32 Bright Stainless Steel
- **Fire Rating** - tested and certified by UL[®] (U.S.A. and Canada) on 4'0" x 10'0" fire rated doors, based on the following
 - 20 minutes - wood doors
 - 90 minutes - hollow metal and composite core wood fire doors
 - 3 hours - hollow metal doors

Options Available

- See pages G-6 to G-7 for modification availability and details



A500RB

Standard Features

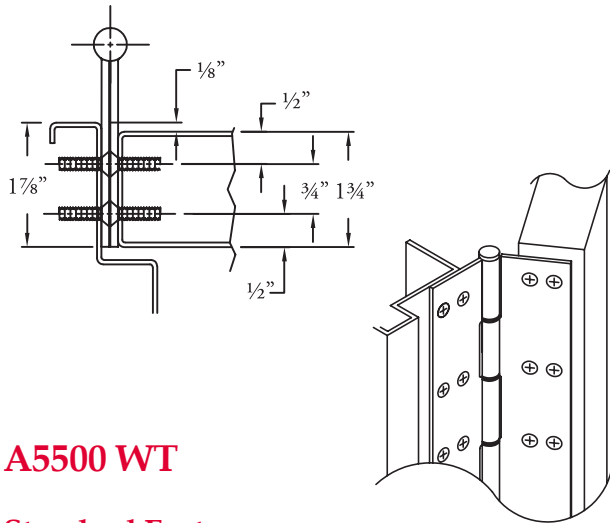
- Raised barrel (swaged) for door set back in deep reveals
- Full concealed, heavy duty
- 48" door width maximum
- 600 lbs. door weight maximum
- **Fasteners:** 10-24 x 7/8" undercut, self-drilling, thread-forming tek machine screws, stainless steel and #10 x 1-1/4" undercut wood screws, stainless steel
- **Lengths:** 78-3/4", 83-1/8", 85", 95" and 118-3/4"
- **Finishes:** US32D Satin Stainless Steel or US32 Bright Stainless Steel
- **Fire Rating** - tested and certified by UL[®] (U.S.A. and Canada) on 4'0" x 10'0" doors, based on the following
 - 20 minutes - wood doors
 - 90 minutes - hollow metal and composite core wood fire doors
 - 3 hours - hollow metal doors

Options Available

- See pages G-6 to G-7 for modification availability and details



Full Concealed



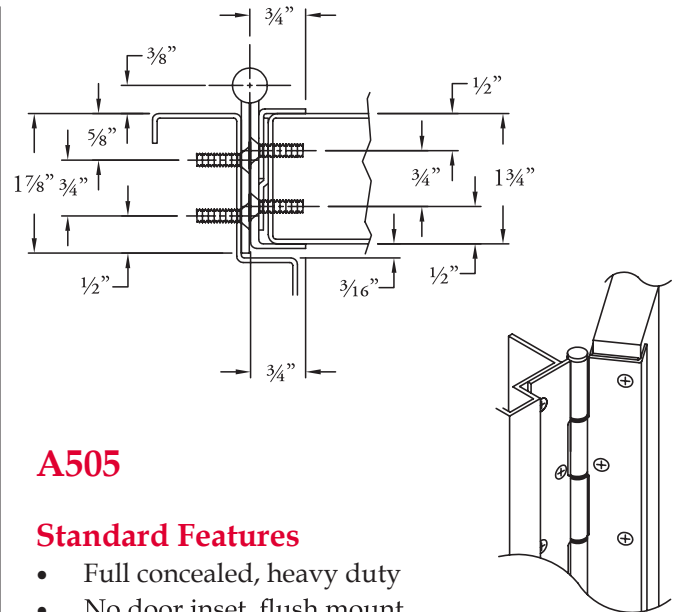
A5500 WT

Standard Features

- Full concealed, heavy duty
- 12 gauge 304 grade stainless steel material
- 1/8" door inset
- Wide throw for applications that need extra clearance for the door or the frame - 5" maximum from center of barrel to edge of hinge leaf
- The use of a caster on the lock side of tall or heavier doors is recommended to help carry to offset load
- 48" door width maximum
- 600 lbs. door weight maximum
- **Fasteners:** 12-24 x 1/2" undercut machine screws, stainless steel
- **Lengths:** 78-3/4", 83-1/8", 85" and 95"
- **Finishes:** US32D Satin Stainless Steel or US32 Bright Stainless Steel
- **Fire Rating** - tested and certified by UL® (U.S.A. and Canada) on 4'0" x 10'0" fire rated doors, based on the following
 - 20 minutes - wood doors
 - 90 minutes - hollow metal and composite core wood fire doors
 - 3 hours - hollow metal doors

Options Available

- See pages G-6 to G-7 for modification availability and details



A505

Standard Features

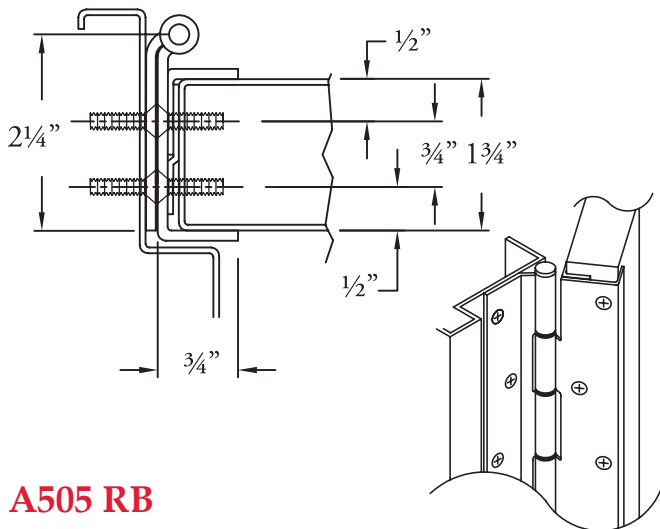
- Full concealed, heavy duty
- No door inset, flush mount
- Door edge guard on both faces of door
- 48" door width maximum
- 600 lbs. door weight maximum
- **Fasteners:** 10-24 x 7/8" undercut, self-drilling, thread-forming tek machine screws, stainless steel and #10 x 1-1/4" undercut wood screws, stainless steel
- **Lengths:** 78-3/4", 83-1/8", 85", 95" and 118-3/4"
- **Finishes:** US32D Satin Stainless Steel or US32 Bright Stainless Steel
- **Fire Rating** - tested and certified by UL® (U.S.A. and Canada) on 4'0" x 10'0" fire rated doors, based on the following
 - 20 minutes - wood doors
 - 90 minutes - hollow metal and composite core wood fire doors
 - 3 hours - hollow metal doors

Options Available

- See pages G-6 to G-7 for modification availability and details



Full Concealed



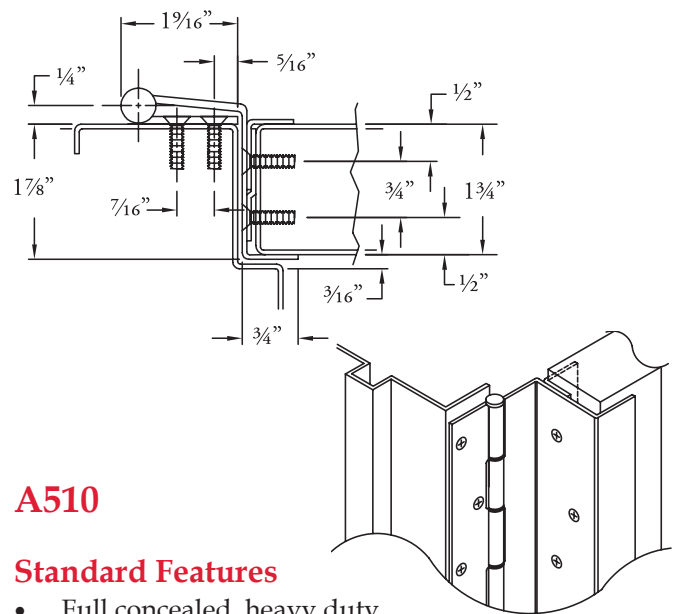
A505 RB

Standard Features

- Raised barrel (swaged) for door set back in deep reveals
- Full concealed, heavy duty
- No door inset, flush mount
- Door edge guard on both faces of door
- 48" door width maximum
- 600 lbs. door weight maximum
- **Fasteners:** 10-24 x 7/8" undercut, self-drilling, thread-forming tek machine screws, stainless steel and #10 x 1-1/4" undercut wood screws, stainless steel
- **Lengths:** 78-3/4", 83-1/8", 85", 95" and 118-3/4"
- **Finishes:** US32D Satin Stainless Steel or US32 Bright Stainless Steel
- **Fire Rating** - tested and certified by UL® (U.S.A. and Canada) on 4'0" x 10'0" doors, based on the following
 - 20 minutes - wood doors
 - 90 minutes - hollow metal and composite core wood fire doors
 - 3 hours - hollow metal doors

Options Available

- See pages G-6 to G-7 for modification availability and details



A510

Standard Features

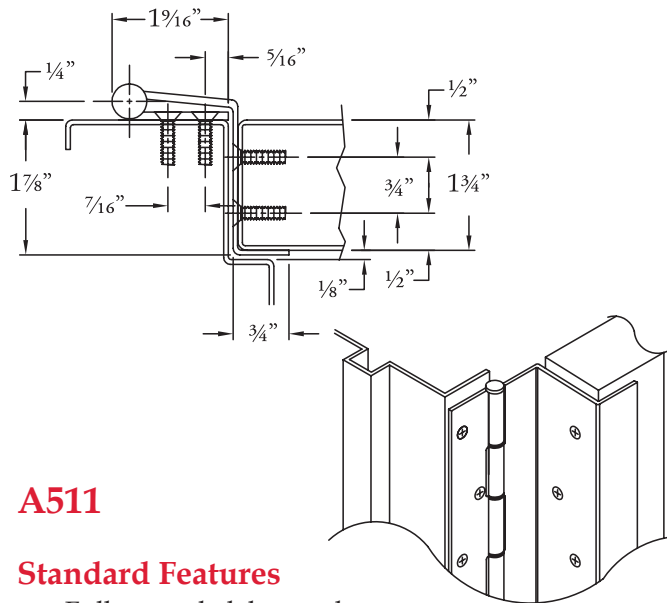
- Full concealed, heavy duty
- No door inset, flush mount
- Swing clear application
- Door edge guard on both faces of door
- 48" door width maximum
- 600 lbs. door weight maximum
- **Fasteners:** 10-24 x 7/8" undercut, self-drilling, thread-forming tek machine screws, stainless steel and #10 x 1-1/4" undercut wood screws, stainless steel
- **Lengths:** 78-3/4", 83-1/8", 85", 95" and 118-3/4"
- **Finishes:** US32D Satin Stainless Steel or US32 Bright Stainless Steel
- **Fire Rating** - tested and certified by UL® (U.S.A. and Canada) on 4'0" x 10'0" fire rated doors, based on the following
 - 20 minutes - wood doors
 - 90 minutes - hollow metal and composite core wood fire doors
 - 3 hours - hollow metal doors

Options Available

- See pages G-6 to G-7 for modification availability and details



Full Concealed



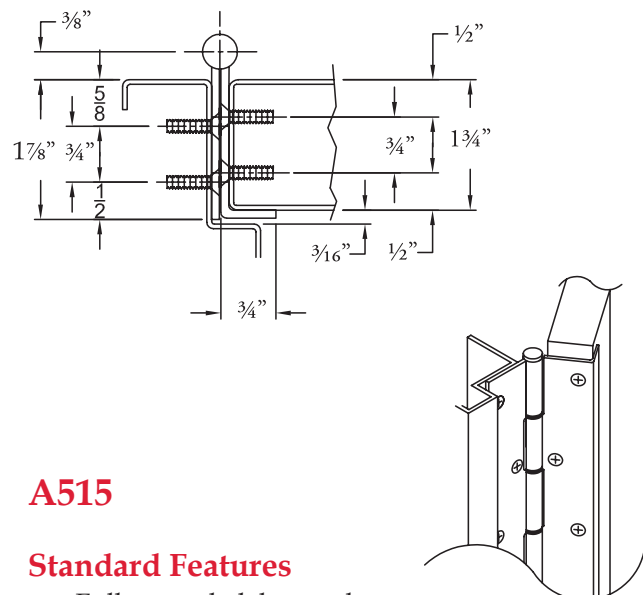
A511

Standard Features

- Full concealed, heavy duty
- No door inset, flush mount
- Swing clear
- Door edge guard on stop side only
- 48" door width maximum
- 600 lbs. door weight maximum
- **Fasteners:** 10-24 x 7/8" undercut, self-drilling, thread-forming tek machine screws, stainless steel and #10 x 1-1/4" undercut wood screws, stainless steel
- Lengths: 78-3/4", 83-1/8", 85", 95" and 118-3/4"
- **Finishes:** US32D Satin Stainless Steel or US32 Bright Stainless Steel
- **Fire Rating** - tested and certified by UL® (U.S.A. and Canada) on 4'0" x 10'0" fire rated doors, based on the following
 - 20 minutes - wood doors
 - 90 minutes - hollow metal and composite core wood fire doors
 - 3 hours - hollow metal doors

Options Available

- See pages G-6 to G-7 for modification availability and details



A515

Standard Features

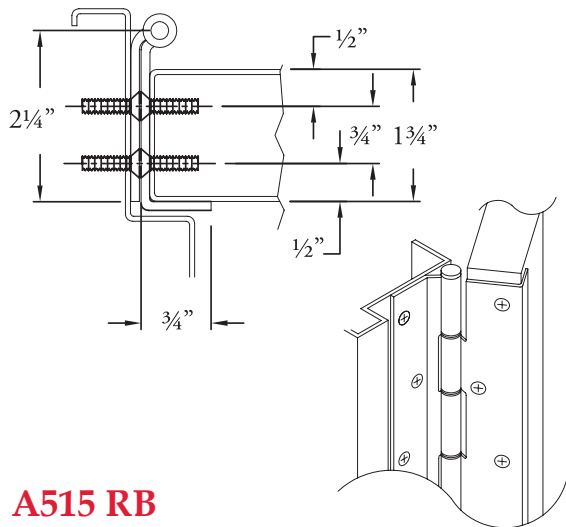
- Full concealed, heavy duty
- No door inset, flush mount
- Door edge guard on stop side only
- 48" door width maximum
- 600 lbs. door weight maximum
- **Fasteners:** 10-24 x 7/8" undercut, self-drilling, thread-forming tek machine screws, stainless steel and #10 x 1-1/4" undercut wood screws, stainless steel
- **Lengths:** 78-3/4", 83-1/8", 85", 95" and 118-3/4"
- **Finishes:** US32D Satin Stainless Steel or US32 Bright Stainless Steel
- **Fire Rating** - tested and certified by UL® (U.S.A. and Canada) on 4'0" x 10'0" fire rated doors, based on the following
 - 20 minutes - wood doors
 - 90 minutes - hollow metal and composite core wood fire doors
 - 3 hours - hollow metal doors

Options Available

- See pages G-6 to G-7 for modification availability and details



Full Concealed



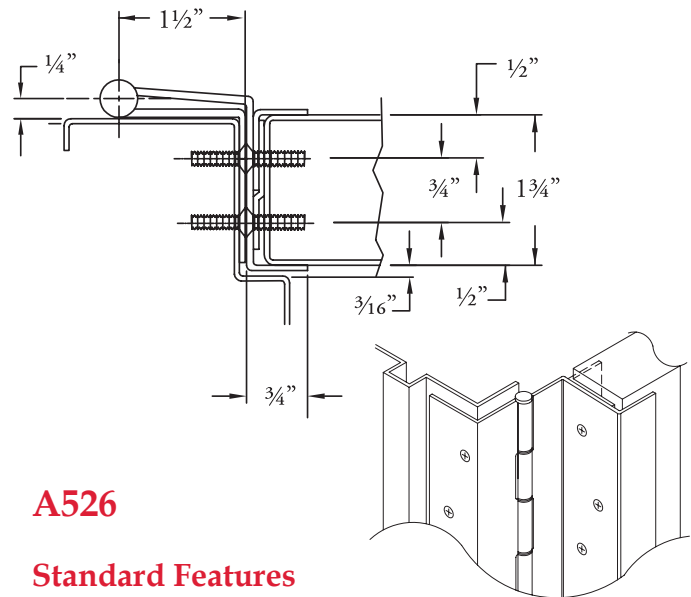
A515 RB

Standard Features

- Raised barrel (swaged) for door set back in deep reveals
- Full concealed, heavy duty
- No door inset, flush mount
- Door edge guard on stop side only
- 48" door width maximum
- 600 lbs. door weight maximum
- **Fasteners:** 10-24 x 7/8" undercut, self-drilling, thread-forming tek machine screws, stainless steel and #10 x 1-1/4" undercut wood screws, stainless steel
- **Lengths:** 78-3/4", 83-1/8", 85", 95" and 118-3/4"
- **Finishes:** US32D Satin Stainless Steel or US32 Bright Stainless Steel
- **Fire Rating** - tested and certified by UL® (U.S.A. and Canada) on 4'0" x 10'0" doors, based on the following
 - 20 minutes - wood doors
 - 90 minutes - hollow metal and composite core wood fire doors
 - 3 hours - hollow metal doors

Options Available

- See pages G-6 to G-7 for modification availability and details



A526

Standard Features

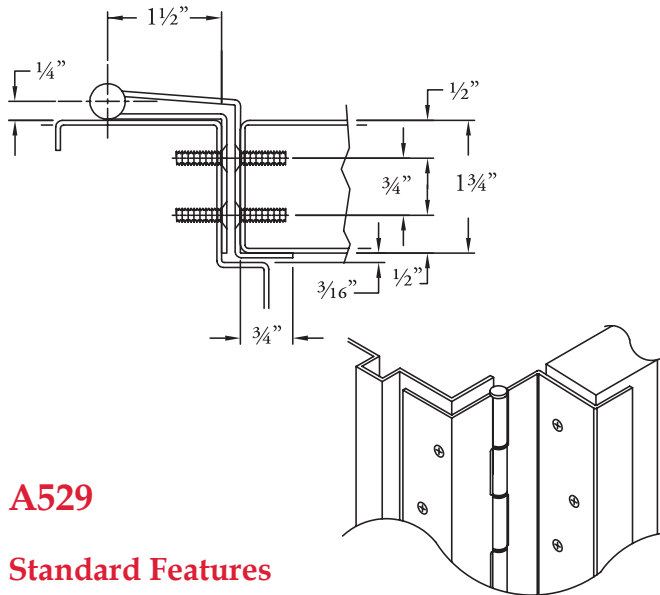
- Full concealed, heavy duty
- No door inset, flush mount
- Swing clear
- Door edge guards on both faces of the door
- 48" door width maximum
- 600 lbs. door weight maximum
- **Fasteners:** 10-24 x 7/8" undercut, self-drilling, thread-forming tek machine screws, stainless steel and #10 x 1-1/4" undercut wood screws, stainless steel
- **Lengths:** 78-3/4", 83-1/8", 85", 95" and 118-3/4"
- **Finishes:** US32D Satin Stainless Steel or US32 Bright Stainless Steel
- **Fire Rating** - tested and certified by UL® (U.S.A. and Canada) on 4'0" x 10'0" fire rated doors, based on the following
 - 20 minutes - wood doors
 - 90 minutes - hollow metal and composite core wood fire doors
 - 3 hours - hollow metal doors

Options Available

- See pages G-6 to G-7 for modification availability and details



Full Concealed



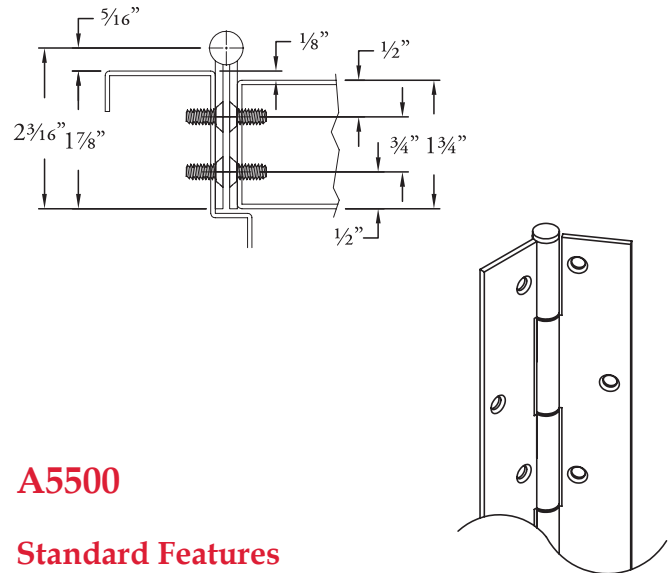
A529

Standard Features

- Full concealed, heavy duty
- No door inset, flush mount
- Swing clear
- Door edge guard on stop side only
- 48" door width maximum
- 600 lbs. door weight maximum
- **Fasteners:** 10-24 x 7/8" undercut, self-drilling, thread-forming tek machine screws, stainless steel and #10 x 1-1/4" undercut wood screws, stainless steel
- **Lengths:** 78-3/4", 83-1/8", 85", 95" and 118-3/4"
- **Finishes:** US32D Satin Stainless Steel or US32 Bright Stainless Steel
- **Fire Rating** - tested and certified by UL[®] (U.S.A. and Canada) on 4'0" x 10'0" fire rated doors, based on the following
 - 20 minutes - wood doors
 - 90 minutes - hollow metal and composite core wood fire doors
 - 3 hours - hollow metal doors

Options Available

- See pages G-6 to G-7 for modification availability and details



A5500

Standard Features

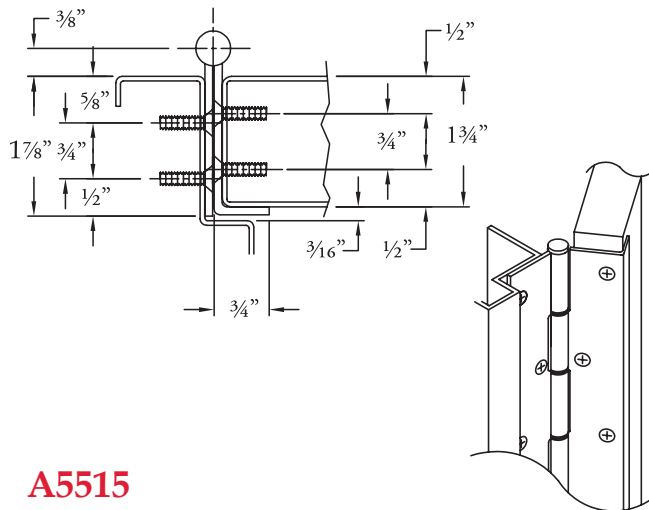
- Full concealed, extra heavy duty
- 12 gauge 304 grade stainless steel material
- 1/8" inset
- For doors up to 2-1/4" thick
- Welded hospital tip provided standard
- 48" door width maximum
- 900 lbs. door weight maximum
- **Fasteners:** 12-24 x 1/2" undercut machine screws, stainless steel
- **Lengths:** 78-3/4", 83-1/8", 85", 95" and 118-3/4"
- **Finishes:** US32D Satin Stainless Steel or US32 Bright Stainless Steel
- **Fire Rating** - tested and certified by UL[®] (U.S.A. and Canada) on 4'0" x 10'0" fire rated doors, based on the following
 - 20 minutes - wood doors
 - 90 minutes - hollow metal and composite core wood fire doors
 - 3 hours - hollow metal doors

Options Available

- See pages G-6 to G-7 for modification availability and details



Full Concealed



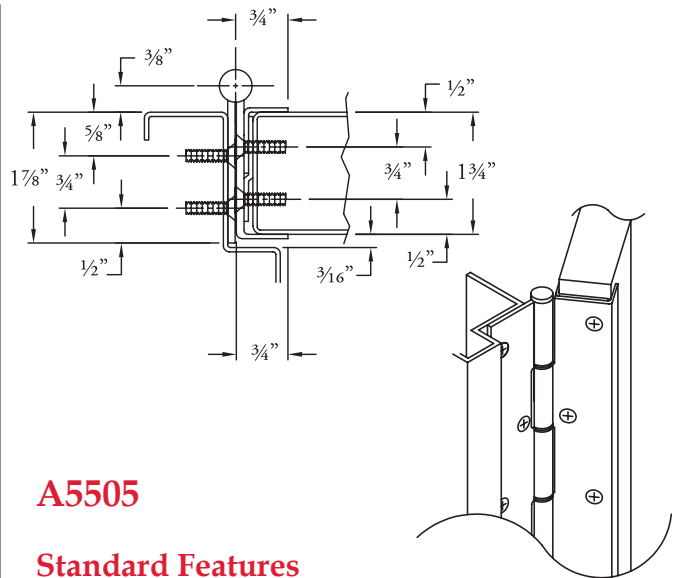
A5515

Standard Features

- Full concealed, extra heavy duty
- 12 gauge 304 grade stainless steel material
- No door inset, flush mount
- Welded hospital tip provided standard
- Door edge guard on stop side only
- 48" door width maximum
- 900 lbs. door weight maximum
- **Fasteners:** 12-24 x 1/2" undercut machine screws, stainless steel
- **Lengths:** 78-3/4", 83-1/8", 85", 95" and 118-3/4"
- **Finishes:** US32D Satin Stainless Steel or US32 Bright Stainless Steel
- **Fire Rating** - tested and certified by UL[®] (U.S.A. and Canada) on 4'0" x 10'0" fire rated doors, based on the following
 - 20 minutes - wood doors
 - 90 minutes - hollow metal and composite core wood fire doors
 - 3 hours - hollow metal doors

Options Available

- See pages G-6 to G-7 for modification availability and details



A5505

Standard Features

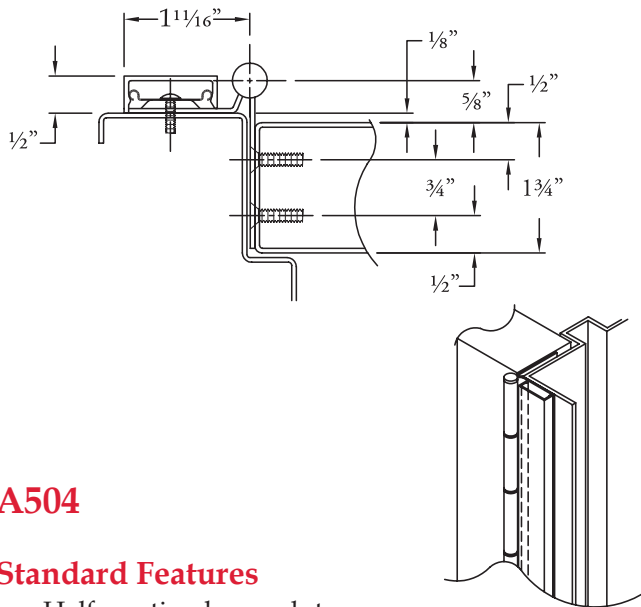
- Full concealed, heavy duty
- 12 gauge 304 grade stainless steel material for hinge leaves
- 16 gauge 304 stainless steel material for edge guard angle bracket
- No door inset, flush mount
- Welded hospital tip provided standard
- Door edge guards on both faces of the door
- 48" door width maximum
- 900 lbs. door weight maximum
- **Fasteners:** 12-24 x 1/2" undercut machine screws, stainless steel
- **Lengths:** 78-3/4", 83-1/8", 85", 95" and 118-3/4"
- **Finishes:** US32D Satin Stainless Steel or US32 Bright Stainless Steel
- **Fire Rating** - tested and certified by UL[®] (U.S.A. and Canada) on 4'0" x 10'0" fire rated doors, based on the following
 - 20 minutes - wood doors
 - 90 minutes - hollow metal and composite core wood fire doors
 - 3 hours - hollow metal doors

Options Available

- See pages G-6 to G-7 for modification availability and details



Half Mortise



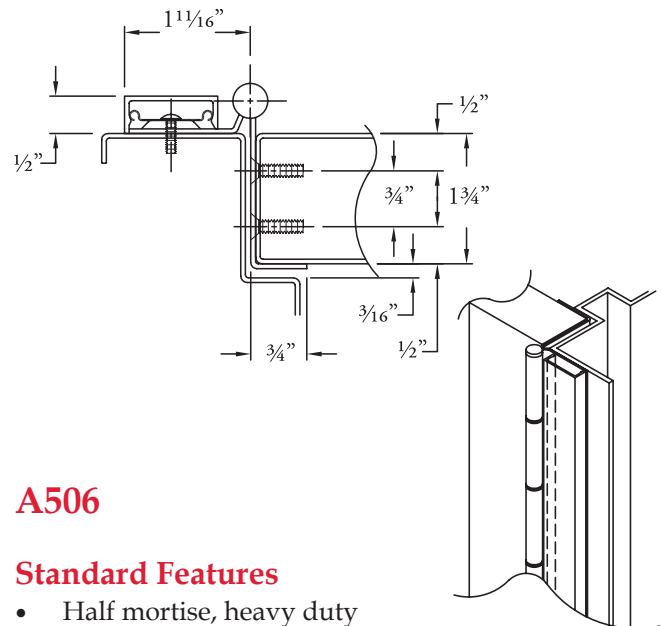
A504

Standard Features

- Half mortise, heavy duty
- 1/8" door inset
- 48" door width maximum
- 600 lbs. door weight maximum
- Frame leaf fastener cover is clear anodized aluminum
- **Fasteners:** 10-24 x 7/8" undercut, self-drilling, thread-forming tek machine screws, stainless steel for door and 1/4 -20 x 3/4" round head self-drilling tek machine screws, zinc plated for frame
- **Lengths:** 78-3/4", 83-1/8", 85", 95" and 118-3/4"
- **Finishes:** US32D Satin Stainless Steel or US32 Bright Stainless Steel
- **Fire Rating** - tested and certified by UL® (U.S.A. and Canada) on 4'0" x 10'0" fire rated doors, based on the following
 - 20 minutes - wood doors
 - 90 minutes - hollow metal and composite core wood fire doors
 - 3 hours - hollow metal doors

Options Available

- See pages G-6 to G-7 for modification availability and details



A506

Standard Features

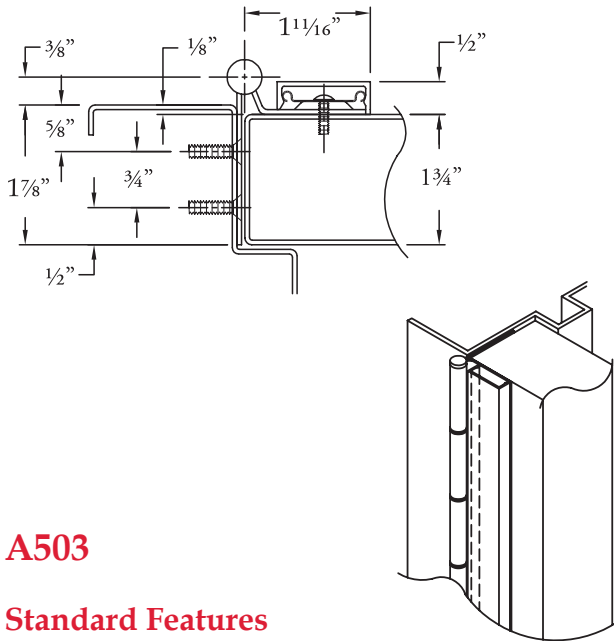
- Half mortise, heavy duty
- No door inset, flush mount
- Door edge guard on stop side only
- 48" door width maximum
- 600 lbs. door weight maximum
- Frame leaf fastener cover is clear anodized aluminum
- **Fasteners:** 10-24 x 7/8" undercut, self-drilling, thread-forming tek machine screws, stainless steel for door and 1/4 -20 x 3/4" round head self-drilling tek machine screws, zinc plated for frame
- **Lengths:** 78-3/4", 83-1/8", 85", 95" and 118-3/4"
- **Finishes:** US32D Satin Stainless Steel or US32 Bright Stainless Steel
- **Fire Rating** - tested and certified by UL® (U.S.A. and Canada) on 4'0" x 10'0" fire rated doors, based on the following
 - 20 minutes - wood doors
 - 90 minutes - hollow metal and composite core wood fire doors
 - 3 hours - hollow metal doors

Options Available

- See pages G-6 to G-7 for modification availability and details



Half Surface & Full Surface



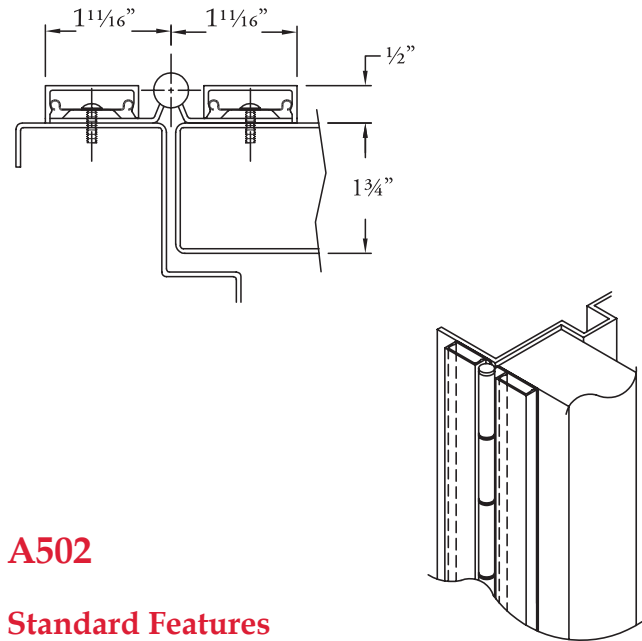
A503

Standard Features

- Half surface, heavy duty
- 1/8" door inset
- 48" door width maximum
- 600 lbs. door weight maximum
- Door leaf fastener cover is clear anodized aluminum
- **Fasteners:** 10-24 x 7/8" undercut, self-drilling, thread-forming tek machine screws, stainless steel for frame and 1/4-20 x 3/4" round head self-drilling tek machine screws, zinc plated for door
- **Lengths:** 78-3/4", 83-1/8", 85", 95" and 118-3/4"
- **Finishes:** US32D Satin Stainless Steel or US32 Bright Stainless Steel
- **Fire Rating** - tested and certified by UL® (U.S.A. and Canada) on 4'0" x 10'0" fire rated doors, based on the following
 - 20 minutes - wood doors
 - 90 minutes - hollow metal and composite core wood fire doors
 - 3 hours - hollow metal doors

Options Available

- See pages G-6 to G-7 for modification availability and details



A502

Standard Features

- Full surface, heavy duty
- No door inset, flush mount
- 48" door width maximum
- 600 lbs. door weight maximum
- Frame and door leaf fastener covers are clear anodized aluminum
- **Fasteners:** 1/4-20 x 3/4" round head self-drilling, thread-forming tek machine screws, zinc plated
- **Lengths:** 78-3/4", 83-1/8", 85", 95" and 118-3/4"
- **Finishes:** US32D Satin Stainless Steel or US32 Bright Stainless Steel
- **Fire Rating** - tested and certified by UL® (U.S.A. and Canada) on 4'0" x 10'0" fire rated doors, based on the following
 - 20 minutes - wood doors
 - 90 minutes - hollow metal and composite core wood fire doors
 - 3 hours - hollow metal doors

Options Available

- See pages G-6 to G-7 for modification availability and details

