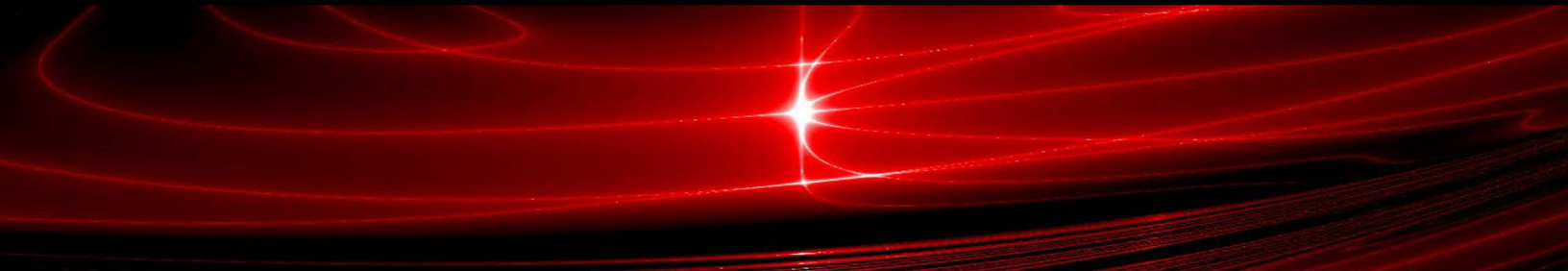
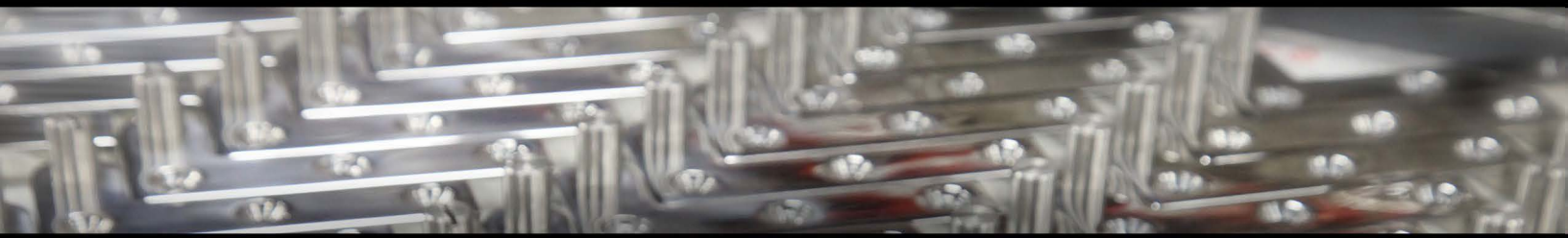


ABH[®]

MANUFACTURING INC.



New Products

Behavioral Health Hardware	1-2
Custom Pulls	3-4
Power Transfers	5
EZ Connector Harness	5
Aluminum Geared Hinges	6
Clean Copper Adhesive	7
<i>Quiet</i> Hospital Latches	8
Electrified Pivots & Pivot Sets	9
Custom Pivots	10
Sheet Metal Products & Accessories	11
<i>Misc...</i> Accessories	12
Electromagnetic Door Holders	13
<i>Custom</i> Hinges	14
Finishes	15

Here at ABH we pride ourselves on building long lasting relationships with our customers. We invest time and effort in making quality products that our customers are proud of.

No matter what industry you work in, innovation is key, along with quality and customer care.

At ABH we are a company that stands behind our customers and our products!

Please see some products you may or may not know about on the following pages, you can find everything on our website as well. www.abhmfg.com

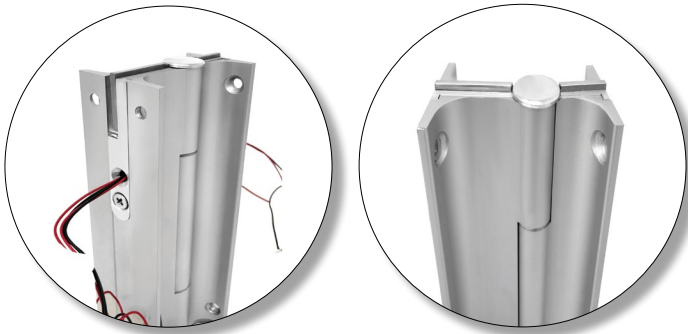
*Enjoy!!
From All Of Us At ABH*



Behavioral Health

These products are for use in behavioral health facilities, hospitals, correctional facilities, or any institution where it is needed to have the door swing in the opposite direction if something or someone obstructs the normal swing of the door.

A507 ANTI-LIGATURE ALUMINUM DOUBLE SWING HINGE



ONLY Double Acting Hinge that has NO GAP between the hinge and the frame.

- Self Closing Option • Top Alarm Option

OMH Approved

AC500 "NO GAP" STAINLESS STEEL PIN & BARREL CONTINUOUS HINGES



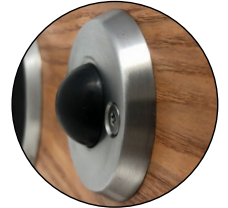
Full mortise, continuous pin & barrel hinges without gaps between the leaves, pin & barrel hinge guards, hinges for behavioral health environments, and options for pin & barrel hinges.

OMH Approved

1841 LIGATURE RESISTANT WALL STOP



Wall Stop low projection, 1" from face of wall. 2 1/2" diameter wall mounted plate. Wall plate has chamfered edges to prevent ligature attachment.
OMH Approved



1842 LIGATURE RESISTANT WALL STOP



Wall Stop projection, 1 3/4" from face of wall. 3 5/8" diameter wall mounted plate. Wall plate has chamfered edges to prevent ligature attachment.
OMH Approved



1930 LIGATURE RESISTANT PULL HANDLE

This HEAVY DUTY ligature resistant pull handle has a sloped top and bottom along with a closed space inside the grip to prevent attachment and wedging.

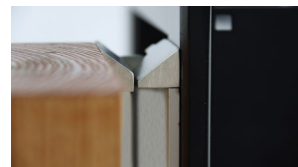
2 3/4" W x 10 1/2" L x 1 3/4" D



OMH Approved



A570AHT FULL SURFACE ADVANCED HOSPITAL TIP



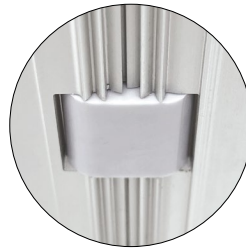
Only hospital tip that has interlocking metal tips which keep anything from being slid through to prevent a ligature point. A570 AHT is the only Hospital Tip that provides ligature resistance in the open and closed position.

**A509
 STAINLESS STEEL PIN & BARREL
 RESCUE STOP**

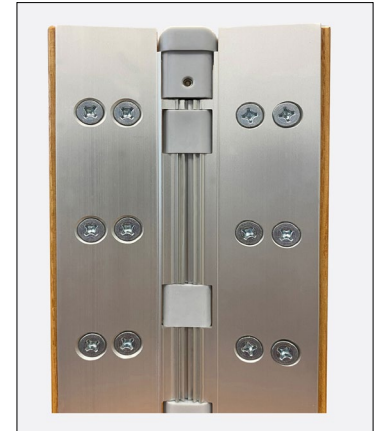
In an emergency situation the stop is manually pulled back to allow the door to move in the opposite direction. The unit is offered as a spring loaded stop, keyed lock, and pin in torx screw options.



**LIGATURE
 RESISTANT BEARINGS**



Ligature Resistant Bearings provide protection from the sharp edges on geared aluminum hinges. Prevents a patient from hurting themselves.



**A110AHT
 GEARED HINGE**

Full Mortise Hinge with Advanced Hospital Tip that provides ligature resistance in the open and closed position

**A240AHT
 GEARED HINGE**



**LR2400
 LIGATURE RESISTANT MAG HOLDER**

The only Ligature Resistant Magnetic Door Holder.



Sloped Door Armature Assembly
 1½" - 3¾" projection, with extension options.

**AHT SAFETY WEDGE
 INSTALLATION WITH CONTINUOUS HINGES**



Adjustable Slot with Lock Screw



Only Adjustable Metal Safety Wedge that is affixed to the top of hinge to provide ligature resistance, for full mortise, full surface, and half surface hinges.

(Equivalent to Select Tipit)

**1911
 LIGATURE RESISTANT
 FLUSH PULL**

Ligature resistant flush pull with internal sloped edges to prevent from objects being wedged inside the cavity.



6° adjustment

6° adjustment built in for maximum flexibility for uneven wall conditions.

Custom

PULLS

Pulls

CUSTOM

AB7200P



Double-Sided Pull



Single-Sided Pull



CUSTOM

AB4700



Side View

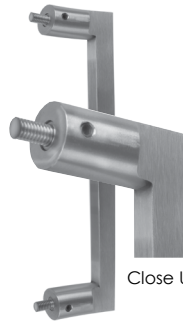
Single-Sided Pull

CUSTOM

AB5270



Double Sided Pull



Close Up View

Single-Sided Pull

CUSTOM

AB8848



Single-Sided Pull

Custom Lengths Available

CUSTOM
18130
1 PIECE STAINLESS STEEL
DOOR PULL

Handmade Solid Stainless Steel Pull with easy grip. Available in all architectural finishes, made from Stainless Steel or brass material.

7.50" Long - 5.50" on Center



Custom Pulls

Edge, Barn, Sliding Door Pulls



18111 PULL & PLATE

Push and Pull Plate Set with no perimeter screw holes in either plate, fully concealed mounting system with stud welded lugs on back of push plate.

- Engraving options available
- Available in Copper+Nickel
- Cutout options available

(Equivalent to Rockwood Plate & Pull 111 X73C/73CL - 4" x 16")



18158-FE DOOR EDGE PULL

Edge pull that is sleek and concealed in the edge of the door with minimal sightlines. Available in all architectural finishes

(equivalent to Rajack FE158)

18158-AR REAR MOUNT EDGE PULL



Rear mount edge pull that is sleek and concealed in the edge of the door with minimal sightlines. Available in all architectural finishes.

18726 STAINLESS STEEL ANGLE PULL

Handmade Solid Bar Edge Pull with Bent angle. Available in all architectural finishes, made from Stainless Steel or brass material.



AB1575 HEAVY DUTY FLUSH PULL

Custom Lengths Available



Custom Flush Pulls are designed to be mounted with the body of the door, and the face surface mounted. ABH flush pulls can be made in any length and width. Available in all architectural finishes.

18200 STAINLESS STEEL ROUND EDGE PULL

Handmade Solid Bar Edge Pull with Bent angle. Available in all architectural finishes, made from Stainless Steel or brass material.

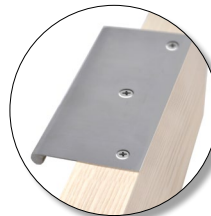
(equivalent to Tydix SF Series Edge Pulls)



18300 STAINLESS STEEL ROUND EDGE PULL

Handmade Solid Bar Edge Pull with Bent angle. Available in all architectural finishes, made from Stainless Steel or brass material.

(equivalent to Tydix SF Series Edge Pulls)



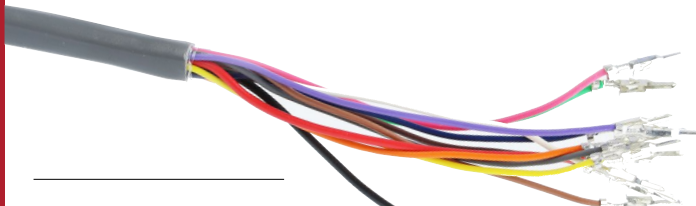
Power Transfers

Power Transfers provides concealed wires required to transfer power from the frame to electric hardware in the door for control and monitoring capability.



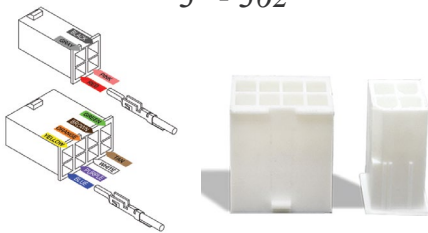
PT1000-SC POWER TRANSFER SWING CLEAR

Power Transfer with flexible telescoping stainless steel tube for swing clear applications



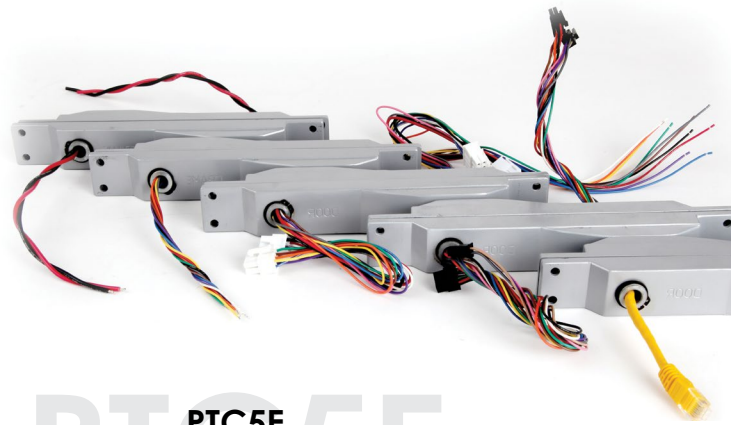
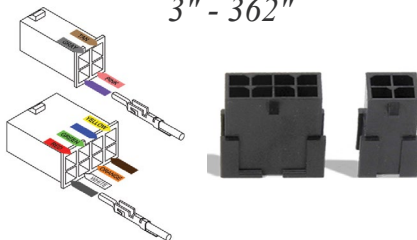
EZ-DK CONNECTION HARNESS (DORMAKABA*)

3" - 362"



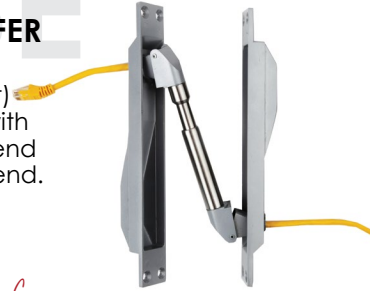
EZ-AA CONNECTION HARNESS (ASSA ABLOY*)

3" - 362"



PTC5E POE POWER TRANSFER

POE (Power of Ethernet) power transfer, comes with RJ45 Connector on one end and loose wires on other end.



Coming Soon

POWER TRANSFER CORD

PTC - 18", PTC - 36"
Comes standard with 2 grey & 2 black hangers

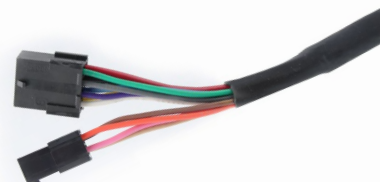
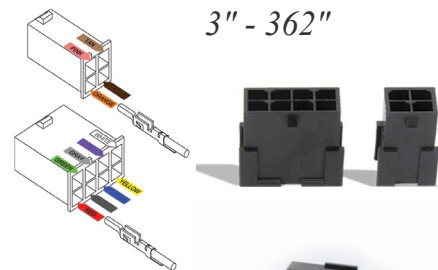
EZ Connector Harnesses

EZ Connect Harnesses for electrical hardware applications, 3" to 30' lengths available with connectors on both ends or connectors on one end only"

go to: www.abhmfmg.com

EZ-AL CONNECTION HARNESS (ALLEGION*)

3" - 362"



**EA THRU WIRE
GEARED HINGE ELECTRICAL PREP
LIFETIME WARRANTY**



ABH EA Series Continuous Hinge was designed for easy access electric through-wires to provide continuous current. It's as "EA"sy and as practical as it looks to assemble. Made of aluminum, it is designed and built to last for the life of the building. It comes with twelve 22 AWG Ultra flexible bonded wires that have been tested to 3,000,000 Cycles.

Aluminum Geared Hinges

These hinges are constructed of 6065-T6 aluminum are for long-lasting use, and are ideal for medium to heavy weight, and medium to high frequency usage doors. These continuous geared hinges are a single hinge that goes the full length of the door, and can be used on metal or wood.

**A280
TYPE 2 ALUMINUM FRAME
CONTINUOUS GEAR HINGE**



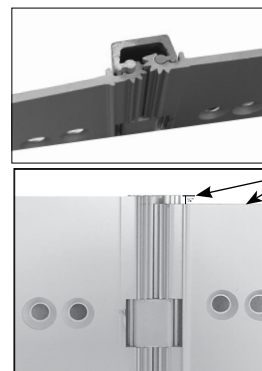
Designed for Use with Aluminum Frames with Snap-On Trim. Full Concealed, Heavy Duty, 450 lb door weigh maximum.

**A570TW
POWER TRANSFER HINGE**



ABH's NEW Electrified Full Surface Hinge with concealed thru-wires to carry electrical current between the frame and door. This 5" removable section is used with our Full-Length Full Surface Models A570; It comes with two 22 AWG Ultra flexible bonded wires that have been tested to 1,000,000 Cycles

**A120
EASY INSTALL HINGE**



1/8" gap from door & frame clearance

The A120 has a slot that allows for vertical adjustability after the hinge is secured to door and frame, reducing overall installation time and cost.

1/8" Variation between frame and Door Leafs for easy tile up installation

**48 HOUR
SHIPPING**

Natural Anti-Microbial Hospital Latches



6800Q HOSPITAL PUSH/PULL LATCHES

Q = Quiet

Quiet Hospital Latch
Custom Engraving Available



Quiet Hospital Latches

CUVERRO

ABH designed a product that when placed in a hospital environment will not create more noise than the ambient noise in the room or area. The hospital latch internal parts create little or no friction by metal on metal touch based on the addition of materials built into the unit. Using innovative sound deadening materials we have achieved our goals of creating a quiet hospital latch . ZERO decibels of noise gained.



6800CN HOSPITAL PUSH/PULL LATCHES

CUVERRO

Copper + Nickel

LR6600 HOSPITAL PUSH/PULL LATCHES



LRF 6000 LIGATURE RESISTANT FLIP HOSPITAL LATCH

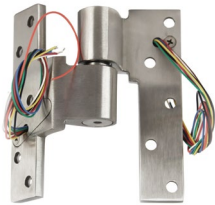


6000 WITH HIP PADDLE HOSPITAL PUSH/PULL LATCH



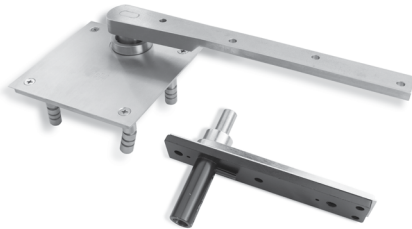
Electrified Pivots & Pivot Sets

*ABH offers a variety of pivots, and as we grow we continue to add more and more options.
Below are some of the electrified pivots we offer and new configurations.*



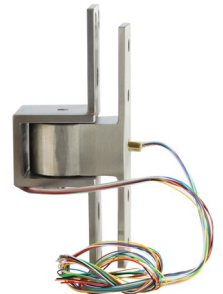
**E019
INTERMEDIATE
PIVOT 3/4" OFFSET HANDED
ELECTRIFIED**

**0117.75 PIVOT SET 3/4"
HEAVY DUTY CENTER HUNG
PIVOT SET & 0345 TOP CENTER PIVOT**



**0117.50 PIVOT SET 3/4"
OFFSET, HANDED
EXTRA HEAVY DUTY
& L0180 TOP PIVOT**

**E0519 POCKET PIVOT
ELECTRIFIED**

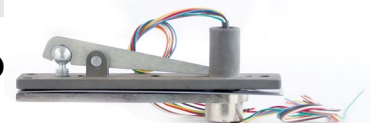


**0173
PIVOT SET, 3/4" OFFSET, HANDED
& 0180 TOP PIVOT**



**E0320
TOP PIVOT, CENTER
HUNG, NON-HANDED
ELECTRIFIED**

**E0340
TOP PIVOT, CENTER
HUNG, NON-HANDED
ELECTRIFIED**



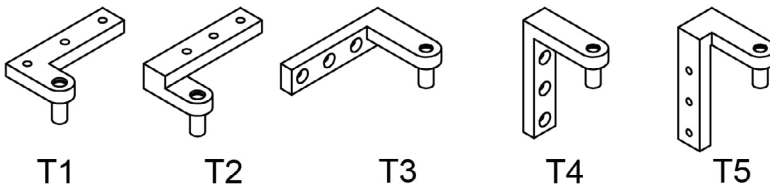
Custom

PIVOTS

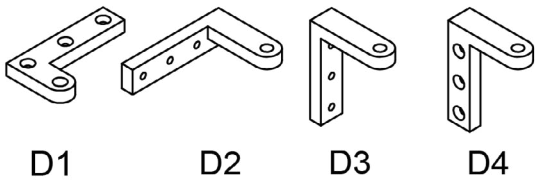
Pivots



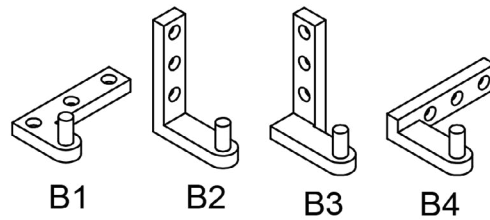
TOP JAMB PORTION



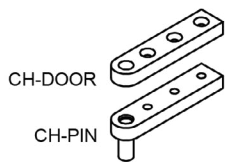
DOOR PORTION



BOTTOM JAMB OR FLOOR PORTION



CENTER HUNG PIVOT



Sheet Metal Products & Accessories

CUSTOM SHEET METAL DOOR PULLS FRAME, WRAPS, AND THRESHOLDS



6101 STAINLESS STEEL AUTOMATIC DOOR-OPENER COVER

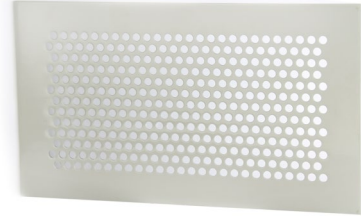


Inside
View



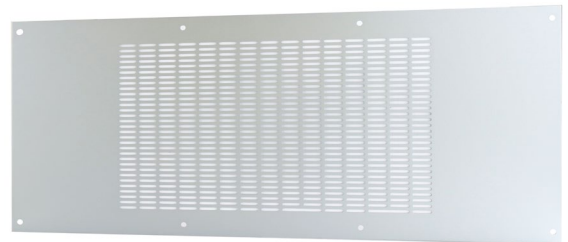
Side View
with end
cap

1821 SECURITY GRILL FACE PLATE



1822 PERFORATED GRILL WITH OBLONG THRU HOLES

Custom Sizes Available



EMERGENCY COIN RELEASE AND INDICATOR



66200 INDICATOR
WITH OVERRIDE



66300 OVERRIDE KNOB

Custom made hinges, pulls, hooks, stops, pivots, door stops, and much more.
Contact Customer Service for more information. 630-875-9900



**A2016
COAT HOOK**



**AM801
COAT HOOK**

**A770SPB
STRIKE PLATE
MOUNTING BRACKET**



**A870SPB
STRIKE PLATE
MOUNTING BRACKET**



**RM225
ROUND
DOOR STOP**

**RMS275
SQUARE
DOOR STOP**



Misc... Accessories

Coat Hooks, Pulls, and many other
NEW Products at ABH.



**RM11
DOOR STOP**

**RM446
FLOOR DOOR STOP**



**18607
PRIVACY DOOR LATCH**



**18501
DOOR GLIDE FOR SLIDING DOORS**

Premium Sliding Door Hardware
made of Stainless Steel,
Rust Resistant with Anti Jump.



**AP100
ARM PULL**



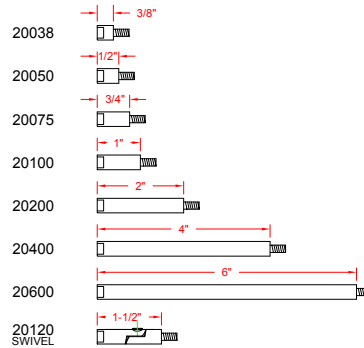
The Arm and Foot Pull can be
coated with Copper Antimicrobial
Coating to help aid in the spread of germs.



Electromagnetic Door Holders

Electromagnetic door holders, are designed to hold doors open and release the door by remote switch or fire life safety command center.

ARMATURE EXTENTIONS



ABH stocks armature extensions that thread together easily, allowing installers to mix & match sizes to achieve desired length (custom extensions available). Standard extensions are available on our T-1 Program. These are used in conjunction with our door armatures that have (2) pivot points which each have 360 degree mobility.



2100RS & 2300RS RECESSED WALL MOUNT WITH ROCKER SWITCH (RS) OPTION

Wall Mount Mag Holder available with Rocker Switch to manually disconnect power for certain applications.

Sloped Door Armature Assembly 1-1/2" - 3 3/4" Projection, With extension Options

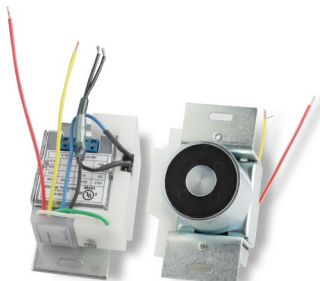
LR2400 ELECTROMAGNETIC DOOR HOLDER



6° adjustment built in for maximum flexibility for uneven wall conditions



2100T & 2300T RECESSED WALL MOUNT



Wall Mount Mag Holder comes with Timer Relay that disconnects power after a specified period of time to disengage the magnetic hold open, power is then automatically reconnected to ensure that mag holder functionality works properly. For use in applications such as closets, offices, etc. ...

A561 SPRING GATE SELF CLOSING HINGE



Full Mortise Spring Hinge is made of Stainless Steel and opens to 180°, and can hold up to 600 lbs.

A563 SPRING GATE SELF CLOSING HINGE



Full Mortise Spring Hinge is made of Stainless Steel and opens to 180°, and can hold up to 600 lbs.

A950 CAM LIFT HINGE



The A950 Cam Lift Hinge will provide $\frac{5}{16}$ " of lift, can hold up to 900 Lbs. (equivalent to Z950)

Coming Soon*

A953-300lbs (equivalent to Z953),
A955-200lbs, (Equivalent to Z955)
A9500-900lbs (equivalent to Z95000)

Hinges

Are you looking for different door hinge types?

OLIVE KNUCKLE HINGE

*Classic Custom
Architectural Hardware*



Beautifully Designed Custom Olive Knuckle Hinges are load bearing, and fire rated. This hinge can be made in any specified dimensions and come in selected finishes.

PAUMELLE HINGE

*Classic Custom
Architectural Hardware*

These exquisite Paumelle Hinges are nothing short of beautiful, reflective and simply elegant. This hinge can be specifically designed for your needs and come in selected finishes.



LIFT OFF HINGES

*Classic Custom
Architectural Hardware*



5" x 5" 4½" x 4½"

Extraordinary Lift Off Hinges can be fabricated to any specifications. Contemporary and sleek in its design, this hinge can be utilized in industrial, commercial, and residential spaces. Hinges come in selected finishes

Available
FINISHES
Finishes



■ **Plated Finishes**

- US3 Bright Brass
- US4 Satin Brass
- US5 Satin Brass Oxidized
- US10 Satin Bronze
- US10A Antique Bronze Lacquered
- US10B Bronze Oiled
- US14B Bright Black Nickel
- US15 Satin Nickel
- US15A Satin Nickel Oxidized
- US17A Satin Black Nickel
- US26 Bright Chrome
- US26D Satin Chrome
- US32D Satin Stainless Steel
- US32 Bright Stainless
- USP Prime Coat

■ **Coated Finishes**

- S1 Painted Aluminum
- S2 Painted Brass (match US4)
- S3 Painted Bronze (match US10)
- S4 Painted Black
- S5 Painted Dark Bronze (match US10B)
- S8 Painted White
- White Suede Powder Coating
- Black Suede Powder Coating
- Custom Powder Coating

■ **Anodized Finishes**

- Clear Anodized
- Light Bronze Anodized
- Medium Bronze Anodized
- Dark Bronze Anodized
- Black Anodized
- Champagne Anodized
- Custom Anodized



Custom Finishes Available



ABH[®]
MANUFACTURING INC.