



Cormax<sup>™</sup>  
Patented Keying System  
by BEST



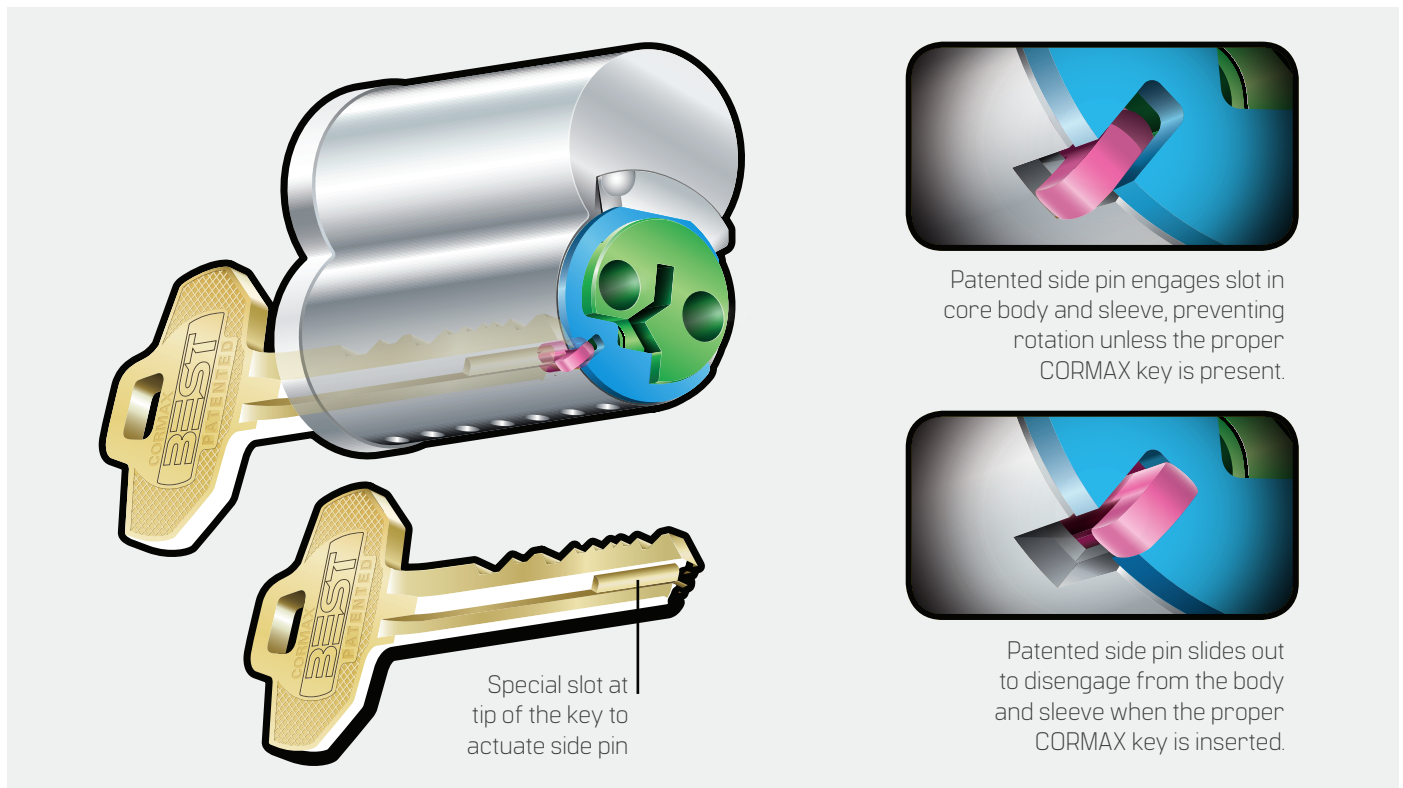
Security. True Control. Convenience.

# The best Cormax™ Patented Keying System advantages

Selecting the right patented keying system has been anything but simple until now. BEST CORMAX, the premier patented keying system offered by BEST, meets all of your exact needs for high security, key control, and convenience - an uncomplicated decision with no compromising allowed!

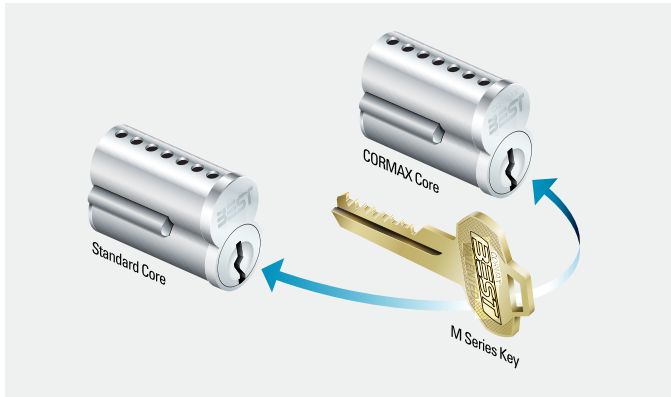
	Asset Security	Personal Safety	User Friendly
Patented system with two independent locking mechanisms	■	■	
Geographical keyway exclusivity	■	■	
Key blank distribution to authorized purchasers only	■	■	
Picking and drilling resistance (optional)	■	■	
BHMA A156.5 Grade 1 certified cores	■	■	■
Factory masterkeying service (at no charge with purchase of complete BEST/PHI products)	■	■	■
Custom key stamping (optional)	■	■	■
Flexibility of BEST interchangeable cores			■
Keystone® 600 Key Management software (optional)			■
Backward compatibility with some existing BEST keyways			■
Nickel silver keys			■
Individually-capped pin chambers			■
Same combination kits/key cutting equipment as BEST standard keyways			■
Legendary BEST quality with three-year warranty			■
BEST national footprint installation and service network			■

## How Cormax works



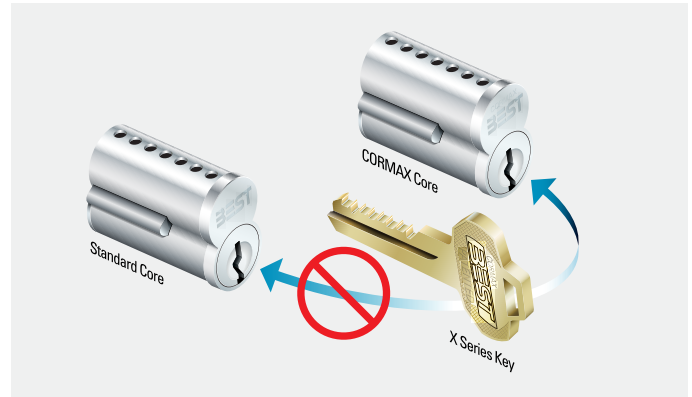
## An option for every need.

The BEST CORMAX Patented Keying System is available in two series of keyways: M series and X series. Each series offers a different blend of features to meet your needs while optimizing security and maximizing convenience.



### M Series Keyway Features

- Four keyways in one family.
- M Series CORMAX keys operate both CORMAX and BEST standard cores (backward compatibility) with J, K, L, and M keyways. BEST standard keys do not operate CORMAX cores.
- Available in large bow, long blade, and long nose key blanks to work with special applications.
- Enables seamless, phase-in upgrades in large facilities and multi-building campuses since CORMAX cores can be installed in openings demanding higher security while keeping the existing BEST cores in the remaining areas.



### X Series Keyway Features

- Twelve keyways organized in three families. More keyway families to be added in the future.
- CORMAX incorporates existing BEST MXB X Series keyways (XA, XB, XC, XD).
- X Series CORMAX keys only operate CORMAX cores.
- X Series keyways are unique to CORMAX offering even higher key duplication protection.
- Thicker key blanks with larger bow for added strength and easier handling.
- Recommended for new facilities and new buildings in multi-building campuses.

## Security, control, and convenience at your fingertips .

- CORMAX cores and keys are available exclusively through BEST sales offices. Key blanks are only sold to individuals authorized by the Customer, and only after validating the individual is an authorized purchaser to maximize key control as per BEST Security Solutions' Key Control Policy.
- CORMAX Patented Keying System is protected by utility patent number 7,681,425 (expiration May 2027).
- CORMAX is the upgrade path for existing BEST standard and BEST MXB systems, and is available in 6-pin and 7-pin sizes.
- CORMAX offers several levels of geographical exclusivity, including national exclusivity, based on purchasing volume; and all geographical levels are protected against unauthorized distribution.
- CORMAX keyways are organized in families of four keyways each, and two multi-milled key levels are available for each family facilitating the design of masterkey systems for multi-building campuses.
- CORMAX cores are certified to meet the security, safety, and reliability requirements of BHMA A 156.5 Grade 1. Note: 1 CMD/1 CXD cores must be used with grade 1 mortise locks, and 1 CM/1 CX cores may be used with grade 1 cylindrical locks.
- CORMAX cores are compatible with all existing BEST interchangeable core housings, eliminating the need for new or modified locks.
- Picking and drilling resistance options can be ordered if higher security is desired. Other options such as key trapping, key retaining, dust cover, and wear resistance provide extra flexibility.
- Nickel silver keys and steel clips ensure long and reliable operation. Individually-capped core pin chambers allow minimum re-pinning labor. Standard combination kits and key cutting equipment minimize your required investment.

For questions about ordering and to be sure you get the right configuration for your needs, [contact your BEST dormakaba sales representative](#).  
6161 East 75th Street, Indianapolis, IN 46250 USA | [855-365-2407](tel:855-365-2407) | [bestaccess.com](http://bestaccess.com)

BEST is a trademark of dormakaba Holding® 2021 All rights reserved. BEST is a member of the dormakaba Group, one of the top three providers for access and security solutions, globally.

