

Product Pricelist

U.S. & Canada Effective Date: May 20, 2024



Experience a safer
and more open world

h.e.s.

ASSA ABLOY



Product Pricelist

U.S. & Canada Effective date May 20, 2024



HES Product List

Electric Strikes

1006	2
1500 Series™	4
1600 Series™	5
ES100 Aperio® Wireless Electric Strike with Card Reader Kits	6
4500C	7
5000, 5200, 5300	8
7000	9
7501	10
8000, 8300	10
8500	11
9100	11
9200	12
9400, 9500, 9600, 9700, 9800	13
Folger Adam SB:310-1(X)	14
Folger Adam 310-2, 310-2 3/4, 310-2 3/4OB	15
Folger Adam 310-3-1	15
Folger Adam 310-4, 310-4 (S)	16
Folger Adam 310-4-X	17
Folger Adam 310-6-X	18
Folger Adam 310-1-X	20
Folger Adam 712, 712-75	21
Folger Adam 732, 732-75	21
Folger Adam SB710, SB710-75	22
Folger Adam SB730, SB730-75	22
Folger Adam 742-75	23
Folger Adam SB740-75	23
Electric Strike Accessories	24

Cabinet Locks

610	25
660	25
KP20 Stand-Alone Keypad Cabinet Lock	25
KS-M Mechanical Server Cabinet Lock	26
KS200 Wiegand Integrated Wired Access Control Server Cabinet Lock	26
KS210 Integrated Wired, RS-485 OSDP Access Control Server Cabinet Lock	27
KS-M, KS200, KS210 Accessories	27

Warranties | Terms & Conditions

Warranties, Terms & Conditions	28
--------------------------------------	----

Electric Strikes

1006CLB Complete Pacs for Latchbolt Locks

MODEL	DESCRIPTION	630
1006CLB		\$767
1006CLB-F	Fail Safe	\$767
1006CLB-LBM		\$899
1006CLB-F-LBM	Fail Safe	\$899
1006CLB-LBSM		\$919
1006CLB-F-LBSM	Fail Safe	\$919

1006CDB Complete Pacs for Locks with Deadbolts

MODEL	DESCRIPTION	630
1006CDB		\$797
1006CDB-F	Fail Safe	\$797

1006CAS Complete Pacs for Locks with Continuous Deadbolt Recapture

MODEL	DESCRIPTION	630
1006CAS		\$808
1006CAS-F	Fail Safe	\$808
1006CAS-2		\$841
1006CAS-2-F	Fail Safe	\$841

1006CS Complete Pacs for Latchbolts & Deadbolts

MODEL	DESCRIPTION	630
1006CS		\$853
1006CS-F	Fail Safe	\$853

1006 Electric Strike Bodies

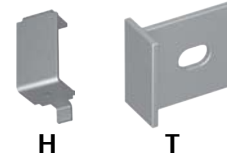
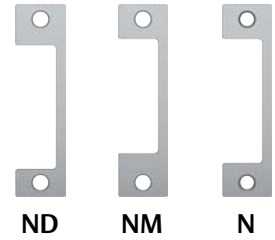
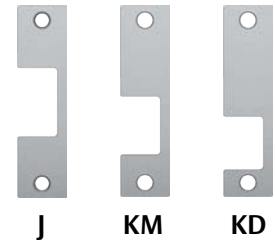
MODEL	DESCRIPTION	605	606	612	613	629	630	BLK
1006		\$866	\$849	\$849	\$812	\$866	\$711	\$762
1006-F	Fail Safe	\$866	\$849	\$849	\$812	\$866	\$711	\$762
1006-LBM		\$998	\$981	\$981	\$944	\$998	\$843	\$894
1006-F-LBM	Fail Safe	\$998	\$981	\$981	\$944	\$998	\$843	\$894
1006-LBSM		\$1019	\$1001	\$1001	\$965	\$1019	\$863	\$914
1006-F-LBSM	Fail Safe	\$1019	\$1001	\$1001	\$965	\$1019	\$863	\$914



How to Orders on next page

Faceplates

MODEL	605	606	612	613	629	630	BLK
LB						\$56	
DB						\$87	
DB2						\$113	
J	\$139	\$124	\$124	\$76	\$124	\$45	\$75
KD	\$139	\$124	\$124	\$76	\$124	\$45	\$75
KM	\$139	\$124	\$124	\$76	\$124	\$45	\$75
ND	\$140	\$122	\$122	\$99	\$122	\$70	\$98
NM	\$140	\$122	\$122	\$99	\$122	\$70	\$98
HM	\$140	\$122	\$122	\$99	\$122	\$70	\$98
HTD	\$140	\$122	\$122	\$99	\$122	\$70	\$98



Specialty Faceplates

MODEL	605	606	612	613	629	630	BLK
E	\$141	\$124	\$124	\$99	\$124	\$70	\$98
R	\$141	\$124	\$124	\$99	\$124	\$70	\$98
Z	\$140	\$122	\$122	\$77	\$122	\$46	\$76
J-2	\$155	\$135	\$135	\$121	\$135	\$90	\$119
KM-2	\$155	\$135	\$135	\$121	\$135	\$90	\$119

Accessories

ITEM	DESCRIPTION	PRICE
1000-102	Rain guard	\$44
1000-104	Lip extension trim adapter (BLK)	\$81
1000-110	Replacement strike plate	\$133
1000-130	KD filler plate	\$59
1006-103	Full keeper shims	\$16
1006-105	Trim enhancer (BLK)	\$42

How to Order Specify quantity and the following information. Order related products separately.

SERIES	MODEL	FAIL SAFE/SECURE	FINISH*	OPTION(S)
1006	—	– F	– 630	– LBM
1006 Universal Electric Strike Faceplates ordered separately	<p>CS** Complete Electric Strike; includes the SMART Pac® III and J, KD, KM, HM, and AD faceplates</p> <p>CLB Complete Electric Strike for latchbolt locks; includes the J, K, KD, and KM faceplates</p> <p>CDB** Complete Electric Strike for Deadbolt Locks; includes the HM and AD faceplates</p> <p>CAS Complete Electric Strike for Locks with Continuous Deadbolt Recature; includes the ND and NM faceplates</p>	<p>F Fail Safe</p> <p>(blank) Fail Secure (standard)</p>	<p>605 Bright Brass</p> <p>606 Satin Brass</p> <p>612 Satin Bronze</p> <p>613 Bronze Toned</p> <p>629 Bright Stainless Steel</p> <p>630 Satin Stainless Steel</p> <p>BLK Black</p>	<p>LBM Latchbolt Monitor</p> <p>LBSM Latchbolt Strike Monitor</p>

*Complete Pacs are only available in the 630 finish. **Complete Pacs with deadbolts are not available with monitoring options.

1500C Series™ Complete Pacs for Latchbolt Locks

MODEL	DESCRIPTION	605	606	612	613E	629	630	BSP
1500C		\$905	\$905	\$905	\$760	\$905	\$655	\$760
1500C-LM	Lock monitors	\$1010	\$1010	\$1010	\$865	\$1010	\$760	\$865
1500C-DLM	Dual lock monitors	\$1115	\$1115	\$1115	\$970	\$1115	\$865	\$970
1500C-LMS	Lock monitors & strike monitors	\$1025	\$1025	\$1025	\$880	\$1025	\$775	\$880
1500C-DLMS	Dual lock monitors & strike monitors	\$1130	\$1130	\$1130	\$985	\$1130	\$880	\$985



1500 Series™ Electric Strike Bodies

MODEL	DESCRIPTION	605	606	612	613E	629	630	BSP
1500		\$730	\$720	\$720	\$670	\$730	\$600	\$670
1500-LM	Lock monitor	\$835	\$825	\$825	\$775	\$835	\$705	\$775
1500-DLM	Dual lock monitors	\$940	\$930	\$930	\$880	\$940	\$810	\$880
1500-LMS	Lock monitor & strike monitor	\$850	\$840	\$840	\$790	\$850	\$720	\$790
1500-DLMS	Dual lock monitors & strike monitor	\$955	\$945	\$945	\$895	\$955	\$825	\$895

1500 Series™ Faceplates

MODEL	DESCRIPTION	605	606	612	613E	629	630	BSP
1LB	(4.875 H x 1.25 W) Kit includes 1J, 1K, 1KD and 1KM faceplates.	\$175	\$185	\$185	\$90	\$175	\$55	\$90
1LB-2	(9 H x 1.375 W) Kit includes 1J-2 & 1KM-2 faceplates.	\$235	\$150	\$150	\$125	\$235	\$90	\$125

1500 Series™ Accessories

MODEL	DESCRIPTION	605	606	612	613E	629	630	BSP
1500-104	Lip extension trim adapter	\$122	\$117	\$117	\$97	\$122	\$52	\$97
1500-106	4500 Filler plates and trim enhancer kit	\$115	\$110	\$110	\$90	\$115	\$45	\$90

Accessories

ITEM	DESCRIPTION	PRICE
OPT-1SRK	Optional spring replacement kit	\$54
OPT-1LM	Optional upgrade kit includes single lock monitor	\$125
OPT-1DLM	Optional kit includes dual lock monitors	\$250
MOD-1SOL	Solenoid replacement module	\$339

How to Order *Specify quantity and the following information. Order related products separately.*

SERIES	MODEL	FINISH	OPTION(S)*
1500	—	– 630	– LM
1500 Universal Electric Strike faceplate option kits ordered separately	C Complete Electric Strike; includes 1LB faceplate kit for latchbolts	605 Bright Brass 606 Satin Brass 612 Satin Bronze 613E Dark Oxidized Satin Bronze Powder 629 Bright Stainless Steel 630 Satin Stainless Steel BSP Black Suede Powder	LM Lock Monitor DLM Dual Lock Monitor LMS Lock Monitor and Strike Monitor DLMS Dual Lock Monitors and Strike Monitor

*LMS/DLMS factory installed only option.

1600CLB Series™ Complete Pacs for Latchbolt Locks

MODEL	DESCRIPTION	605	606	612	613E	629	630	BSP
1600-CLB		\$905	\$905	\$905	\$760	\$905	\$655	\$760
1600-CLB-LM	Lock monitor	\$1010	\$1010	\$1010	\$865	\$1010	\$760	\$865
1600-CLB-DLM	Dual lock monitor	\$1115	\$1115	\$1115	\$970	\$1115	\$865	\$970
1600-CLB-LMS	Lock monitor & strike monitor	\$1025	\$1025	\$1025	\$880	\$1025	\$775	\$880
1600-CLB-DLMS	Dual lock monitors & strike monitor	\$1130	\$1130	\$1130	\$985	\$1130	\$880	\$985

1600CDB Series™ Complete Pacs for Locks with Deadbolts

MODEL	DESCRIPTION	605	606	612	613E	629	630	BSP
1600-CDB		\$905	\$905	\$905	\$760	\$905	\$655	\$760
1600-CDB-LM	Lock monitor	\$1010	\$1010	\$1010	\$865	\$1010	\$760	\$865
1600-CDB-DLM	Dual lock monitors	\$1115	\$1115	\$1115	\$970	\$1115	\$865	\$970
1600-CDB-LMS	Lock monitor & strike monitor	\$1025	\$1025	\$1025	\$880	\$1025	\$775	\$880
1600-CDB-DLMS	Dual lock monitors & strike monitor	\$1130	\$1130	\$1130	\$985	\$1130	\$880	\$985

1600CS Series™ Complete Pacs for Latchbolts & Deadbolts

MODEL	DESCRIPTION	605	606	612	613E	629	630	BSP
1600-CS		\$1080	\$1059	\$1059	\$846	\$1080	\$705	\$846
1600-CS-LM	Lock monitor	\$1185	\$1164	\$1164	\$951	\$1185	\$810	\$951
1600-CS-DLM	Dual lock monitors	\$1290	\$1269	\$1269	\$1056	\$1290	\$915	\$1056
1600-CS-LMS	Lock monitor & strike monitor	\$1200	\$1179	\$1179	\$966	\$1200	\$825	\$966
1600-CS-DLMS	Dual lock monitors & strike monitor	\$1305	\$1284	\$1284	\$1071	\$1305	\$930	\$1071

1600 Series™ Electric Strike Bodies

MODEL	DESCRIPTION	605	606	612	613E	629	630	BSP
1600		\$730	\$720	\$720	\$670	\$730	\$600	\$670
1600-LM	Lock monitor	\$835	\$825	\$825	\$775	\$835	\$705	\$775
1600-DLM	Dual lock monitors	\$940	\$930	\$930	\$880	\$940	\$810	\$880
1600-LMS	Lock monitor & strike monitor	\$850	\$840	\$840	\$790	\$850	\$720	\$790
1600-DLMS	Dual lock monitors & strike monitor	\$955	\$945	\$945	\$895	\$955	\$825	\$895

1600 Series™ Faceplates

MODEL	DESCRIPTION	605	606	612	613E	629	630	BSP
1LB	(4.875 H x 1.25 W) Kit includes 1J, 1K, 1KD and 1KM faceplates.	\$175	\$185	\$185	\$90	\$175	\$55	\$90
1LB-2	(9 H x 1.375 W) Kit includes 1J-2 & 1KM-2 faceplates.	\$235	\$150	\$150	\$125	\$235	\$90	\$125
1DB	(4.875 H x 1.25 W) Kit includes faceplates and brackets to make 1N, 1ND, 1NM and 1NTD options.	\$175	\$185	\$185	\$90	\$175	\$55	\$90
1DB-2	(9 H x 1.375 W) Kit includes faceplates and brackets to make 1N-2 option.	\$235	\$150	\$150	\$125	\$235	\$90	\$125

1600 Series™ Accessories

MODEL	DESCRIPTION	605	606	612	613E	629	630	BSP
1600-104	1600 Lip extension trim adapter	\$122	\$117	\$117	\$97	\$122	\$52	\$97
1600-106	1600 Adapter and trim enhancer kit	\$115	\$110	\$110	\$90	\$115	\$45	\$90

Accessories

ITEM	DESCRIPTION	PRICE
OPT-1SRK	Optional spring replacement kit	\$54
OPT-1LM	Optional upgrade kit includes single lock monitor	\$125
OPT-1DLM	Optional kit includes dual lock monitors	\$250
MOD-1SOL	Solenoid replacement module	\$339

How to Order Specify quantity and the following information. Order related products separately.

SERIES	MODEL	FINISH	OPTION(S)*
1600	– CS	– 630	– LM
1600 Universal Electric Strike; Faceplate option kits ordered separately	CS Complete Electric Strike; includes 1LB faceplate kit for latchbolts and 1DB faceplate kit for deadbolts	605 Bright Brass	LM Lock Monitor
	CLB Complete Electric Strike for Latchbolt Locks; includes 1LB faceplate kit for latchbolts	606 Satin Brass	DLM Dual Lock Monitor
		612 Satin Bronze	LMS Lock Monitor and Strike Monitor
	CDB Complete Electric Strike for Deadbolt Locks; includes 1DB faceplate kit for deadbolts	613E Dark Oxidized Satin Bronze Powder	DLMS Dual Lock Monitors and Strike Monitor
		629 Bright Stainless Steel	
	630 Satin Stainless Steel		
	BSP Black Suede Powder		

*LMS/DLMS factory installed only option.



h.e.s.

ASSA ABLOY

ES100-15 Aperio® Wireless Electric Strike with Card Reader Kits

MODEL	DESCRIPTION	630
ES100-15LH	Aperio® 1500 Wireless Electric Strike 1:1 Kit Latchbolts	\$1737
ES100-15LMH	Aperio® 1500 Monitored Wireless Electric Strike 1:1 Kit Latchbolts	\$1842

1500 Series™ Faceplates

MODEL	DESCRIPTION	605	606	612	613E	629	630	BSP
1LB	(4.875 H x 1.25 W) Kit includes 1J, 1K, 1KD and 1KM faceplates.	\$175	\$185	\$185	\$90	\$175	\$55	\$90
1LB-2	(9 H x 1.375 W) Kit includes 1J-2 & 1KM-2 faceplates.	\$235	\$150	\$150	\$125	\$235	\$90	\$125

1500 Series™ Accessories

MODEL	DESCRIPTION	605	606	612	613E	629	630	BSP
1500-104	Lip extension trim adapter	\$122	\$117	\$117	\$97	\$122	\$52	\$97
1500-106	4500 Filler plates and trim enhancer kit	\$115	\$110	\$110	\$90	\$115	\$45	\$90

ES100-15 Demo Mounts

ITEM	DESCRIPTION	PRICE
DEMO-ES100-15L-IPS-BSP	ES100-15 Aperio® Wireless Electric Strike Demo Mount For Latchbolts With Black Suede Powdercoat Finish and HID multiCLASS SE Card Reader, HID NFC Mobile Access Enabled	\$1273

ES100-16 Aperio® Wireless Electric Strike with Card Reader Kits

MODEL	DESCRIPTION	630
ES100-16LH	Aperio® 1600 Wireless Electric Strike 1:1 Kit Latchbolts	\$1737
ES100-16LMH	Aperio® 1600 Monitored Wireless Electric Strike 1:1 Kit Latchbolts	\$1842
ES100-16SH	Aperio® 1600 Wireless Electric Strike 1:1 Kit Latchbolts and Deadbolts	\$1786
ES100-16SMH	Aperio® 1600 Monitored Wireless Electric Strike 1:1 Kit Latchbolts and Deadbolts	\$1891

1600 Series™ Faceplates

MODEL	DESCRIPTION	605	606	612	613E	629	630	BSP
1LB	(4.875 H x 1.25 W) Kit includes 1J, 1K, 1KD and 1KM faceplates.	\$175	\$185	\$185	\$90	\$175	\$55	\$90
1LB-2	(9 H x 1.375 W) Kit includes 1J-2 & 1KM-2 faceplates.	\$235	\$150	\$150	\$125	\$235	\$90	\$125
1DB	(4.875 H x 1.25 W) Kit includes faceplates and brackets to make 1N, 1ND, 1NM and 1NTD options.	\$175	\$185	\$185	\$90	\$175	\$55	\$90
1DB-2	(9 H x 1.375 W) Kit includes faceplates and brackets to make 1N-2 option.	\$235	\$150	\$150	\$125	\$235	\$90	\$125

1600 Series™ Accessories

MODEL	DESCRIPTION	605	606	612	613E	629	630	BSP
1600-104	1600 Lip extension trim adapter	\$122	\$117	\$117	\$97	\$122	\$52	\$97
1600-106	1600 Adapter and trim enhancer kit	\$115	\$110	\$110	\$90	\$115	\$45	\$90

ES100 Accessories

ITEM	DESCRIPTION	PRICE
OPT-1SRK	Optional spring replacement kit	\$54
OPT-1LM	Optional upgrade kit includes single lock monitor	\$125
EXT-10-ANT	ASSA ABLOY Aperio® Wireless Hub External Antenna (3, 9 DBi Omni-Directional)	\$72
ACC10	RFID test credentials	\$36
APD10USB	Used to configure both the Aperio product and/or Aperio hubs via the Program Application software.	\$674

How to Order *Specify quantity and the following information. Order related products separately.*

PRODUCT FAMILY	COMMUNICATION	MODEL SERIES	FACEPLATES	OPTIONS	CARD TECHNOLOGY	STRIKE FINISH
ES	100	- 15	L	H	-IPS	- 630
Electric Strike	100 Aperio Wireless	15 Reader and 1500 Strike 16 Reader and 1600 Strike	L Complete Pac for Latchbolts S* Complete Pac for Latchbolts and Deadbolts	H** Wholesale Kit MH** Wholesale Kit with Monitoring for High Security	IPS RFID (HID multiCLASS SE)	630 Satin Stainless Steel

*Available with 1600 Only. **Only available with L or S Complete Pac Options in 630 Finish.

HES ES100: The HES ES100 Electric Strike is available as either a pre-paired lock and hub kit (no certification required) or as a field configurable component (requires Aperio® Certified Integrator certification). Pre-paired kits support limited features. Field configured devices are required in order to support all options. Visit IntelligentOpenings.com to learn more.



4500C Complete Pacs for Latchbolt Locks

MODEL	DESCRIPTION	605	606	612	613	629	630
4500C		\$927	\$911	\$911	\$868	\$927	\$773
4500C-LBM	Latchbolt monitor	\$1061	\$1045	\$1045	\$1002	\$1061	\$907
4500C-LBSM	Latchbolt strike monitor	\$1082	\$1066	\$1066	\$1022	\$1082	\$927

Accessories

ITEM	DESCRIPTION	PRICE
4500-105	Trim enhancer (BLK)	\$43
4500-110	Replacement strike plate	\$130
4500-131	Filler block	\$55
4501-1/2	1/2" stackable lip extension	\$73
4501-1	1" stackable lip extension	\$80



How to Order *Specify quantity and the following information. Order related products separately.*

SERIES	FINISH*	OPTION(S)
4500C	– 630	– LBM
4500C Complete Electric Strike; includes faceplates for cylindrical and mortise locks	605 Bright Brass	LBM Latchbolt Monitor
	606 Satin Brass	LBSM Latchbolt Strike Monitor
	612 Satin Bronze	
	613 Bronze Toned	
	629 Bright Stainless Steel	
	630 Satin Stainless Steel	

5000C, 5200C, 5300C Complete Pacs for Latchbolt Locks

MODEL	DESCRIPTION	630
5000C		\$227
5000C-LBM	Latchbolt monitor	\$318
5200C		\$237
5200C-LBM	Latchbolt monitor	\$328
5200C-LBSM	Latchbolt strike monitor	\$348
5300C		\$454
5300C-LBM	Latchbolt Monitor	\$546

5000, 5200, 5300 Electric Strike Bodies

MODEL	DESCRIPTION	630
5000		\$201
5000-LBM	Latchbolt monitor	\$292
5200		\$212
5200-LBM	Latchbolt monitor	\$302
5200-LBSM	Latchbolt strike monitor	\$323
5300		\$429
5300-LBM	Latchbolt Monitor	\$521



Faceplates

MODEL	605	606	612	613	629	630	BSP
501	\$79	\$58	\$58	\$49	\$79	\$24	\$49
501A	\$85	\$61	\$61	\$54	\$85	\$29	\$54
502	\$103	\$84	\$84	\$70	\$103	\$50	\$70
503	\$103	\$84	\$84	\$70	\$103	\$50	\$70
504	\$103	\$84	\$84	\$70	\$103	\$50	\$70

Accessories

ITEM	DESCRIPTION	PRICE
5000-105	Trim enhancer (goof plate)	\$36
5104-1/2	1/2" stackable lip extension	\$61
5104-1	1" stackable lip extension	\$69
5104-1-1/4	1-1/4" stackable lip extension	\$71
5200 105	Trim enhancer (goof plate)	\$36
5200-500	Filler block	\$78
5204-1/2	1/2" stackable lip extension	\$61
5204-1	1" stackable lip extension	\$69
5204-1-1/4	1-1/4" stackable lip extension	\$71

How to Order *Specify quantity and the following information. Order related products separately.*

SERIES	MODEL	FINISH*	OPTION(S)*
5000	—	— 630	— LBM
5000, 5200, 5300	Universal Electric Strike; faceplate option kits ordered separately	C* Complete Electric Strike; includes the 501 and 501A faceplates	630 Satin Stainless Steel LBM Latchbolt Monitor LBSM** Latchbolt Strike Monitor

*Complete Pacs are only available in the 630 finish. **LBSM only available with 5200.

FACEPLATE OPTIONS	FINISH
502	— 613E
For Cylindrical Locksets (ANSI Metal)	605 Bright Brass
501 Option 4-7/8" x 1-1/4"	606 Satin Brass
For Cylindrical Locksets (Aluminum)	612 Satin Bronze
501A Option 4-7/8" x 1-1/4"	613E Dark Oxidized Satin Bronze Powder
502 Option 7-15/16" x 1-7/16"	629 Bright Stainless Steel
503 Option 6-7/8" x 1-1/4"	630 Satin Stainless Steel
For Cylindrical Locksets (Wood)	BSP Black Suede Powder
504 Option 10" x 1-3/8"	

7000C Complete Pacs for Latchbolt Locks

MODEL	DESCRIPTION	630
7000C		\$388
7000C-LBM	Latchbolt monitor	\$510

7000 Electric Strike Bodies

MODEL	DESCRIPTION	630
7000		\$317
7000-LBM	Latchbolt monitor	\$439

Faceplates

MODEL	605	606	612	613E	629	630	BLK
791	\$125	\$107	\$107	\$91	\$125	\$70	\$91
792	\$125	\$107	\$107	\$91	\$125	\$70	\$91
783S				\$267		\$187	
786S				\$302		\$208	
789S				\$302		\$208	



Accessories

ITEM	DESCRIPTION	PRICE
7000-104	Lip extension trim adapter (791 & 792 options only)	\$38
7000-105	Trim enhancer (goof plate) (791 & 792 options only)	\$38
7000-106	Keeper pocket adapter (783S & 789S options only)	\$37
7000-107	Full keeper shim pack	\$22
7000-108	Spacer plate (783S & 789S options, black finish only)	\$41
7000-110	Replacement strike plate (791 and 792 option)	\$128
SMB	Surface mounting box	\$244

How to Order Specify quantity and the following information. Order related products separately.

SERIES	MODEL	FINISH*	OPTION(S)
7000	—	— 630	— LBM
7000 Universal Electric Strike; faceplates ordered separately	C* Complete Electric Strike; includes the 791 and 792 faceplates (blank) Strike Body Only	630 Satin Stainless Steel	blank No Monitor LBM Latchbolt Monitor

*Complete Pacs are only available in 630 finish.

FACEPLATE OPTIONS	FINISH
792	— 606
For Cylindrical Locksets	605 Bright Brass
791 Option 4-7/8" x 1-1/4"	606 Satin Brass
792 Option 7-15/16" x 1-7/16"	612 Satin Bronze
For Rim Exit Devices	613E Dark Oxidized Satin Bronze Powder
783S Option 9" x 1-3/4" x 11/16"	629 Bright Stainless Steel
786S Option 6-1/2" x 1-3/4" x 1/2"	630 Satin Stainless Steel
789S Option 9" x 1-3/4" x 1/2"	BLK Black

7501 Electric Strike

MODEL	DESCRIPTION	605	606	612	613	629	630
7501		\$851	\$833	\$833	\$816	\$851	\$745
7501-LBM	Latchbolt monitor	\$974	\$955	\$955	\$939	\$974	\$867



How to Order *Specify quantity and the following information. Order related products separately.*

SERIES	FINISH*	OPTION(S)
7501	– 630	– LBM
7501 Universal Electric Strike; includes faceplate for cylindrical locksets	605 Bright Brass 606 Satin Brass 612 Satin Bronze 613 Bronze Toned 629 Bright Stainless Steel 630 Satin Stainless Steel	LBM Latchbolt Monitor

8000C, 8300C Complete Pac for Latchbolt Locks

MODEL	DESCRIPTION	630
8000C		\$278
8000C-LBM	Latchbolt monitor	\$389
8300C		\$617
8300C-LBM	Latchbolt monitor	\$729



8000, 8300 Electric Strike Bodies

MODEL	DESCRIPTION	630
8000		\$243
8000-LBM	Latchbolt monitor	\$354
8300		\$581
8300-LBM	Latchbolt monitor	\$693

Faceplates

MODEL	605	606	612	613	629	630	BLK
801	\$96	\$78	\$78	\$63	\$96	\$35	\$59
801A	\$103	\$84	\$84	\$68	\$103	\$43	\$64
801E	\$96	\$78	\$78	\$63	\$96	\$36	\$59
802	\$120	\$98	\$98	\$85	\$120	\$56	\$88
803	\$120	\$98	\$98	\$85	\$120	\$56	\$80
805	\$120	\$98	\$98	\$85	\$120	\$56	\$80

How to Order *Specify quantity and the following information. Order related products separately.*

SERIES	MODEL	FINISH*	OPTION(S)
8000	—	– 630	– LBM
8000, 8300 Universal Electric Strike; faceplates ordered separately	C Complete Electric Strike; includes the 801 and 801A faceplates (blank) Strike Body Only	630 Satin Stainless Steel	LBM Latchbolt Monitor

*Complete Pacs are only available in 630 finish.

FACEPLATE OPTIONS	FINISH
801	– 613
For Cylindrical Locksets (ANSI Metal)	605 Bright Brass
801 Option 4-7/8" x 1-1/4"	606 Satin Brass
For Cylindrical Locksets (Aluminum)	612 Satin Bronze
801A Option 4-7/8" x 1-1/4"	613 Bronze Toned
802 Option 7-15/16" x 1-7/16"	629 Bright Stainless Steel
803 Option 6-7/8" x 1-1/4"	630 Satin Stainless Steel
For Cylindrical Locksets (Wood)	BLK Black
804 Option 10" x 1-3/8"	

8500 Electric Strike Bodies

MODEL	DESCRIPTION	605	606	612	613	629	630
8500		\$718	\$702	\$702	\$702	\$718	\$606
8500-LBM	Latchbolt monitor	\$839	\$824	\$824	\$824	\$839	\$728
8500-LBSM	Latchbolt strike monitor	\$859	\$844	\$844	\$844	\$859	\$748

Faceplates

MODEL	605	606	612	613	629	630
851M	\$110	\$89	\$89	\$78	\$110	\$48
852K	\$110	\$89	\$89	\$78	\$110	\$48
852L	\$110	\$89	\$89	\$78	\$110	\$48
852M	\$110	\$89	\$89	\$78	\$110	\$48



How to Order Specify quantity and the following information. Order related products separately.

SERIES	FINISH*	OPTION(S)
8500	- 630	- LBM
8500 Universal Electric Strike; faceplates ordered separately	605 Bright Brass 606 Satin Brass 612 Satin Bronze 613 Bronze Toned 629 Bright Stainless Steel 630 Satin Stainless Steel	LBM Latchbolt Monitor LBSM Latchbolt Strike Monitor

9100 Series Left Handed Surface Mounted Electric Strike

MODEL	DESCRIPTION	605	606	612	613E	629	630	BSP
9100L	Left handed	\$949	\$909	\$909	\$869	\$949	\$799	\$869
9100L-LM	Left handed with Latchbolt monitor	\$1024	\$984	\$984	\$944	\$1024	\$874	\$944
9100L-LMS	Left handed with Latchbolt strike monitor	\$1064	\$1024	\$1024	\$984	\$1064	\$914	\$984



9100 Series Right Handed Surface Mounted Electric Strike

MODEL	DESCRIPTION	605	606	612	613E	629	630	BSP
9100R	Right handed	\$949	\$909	\$909	\$869	\$949	\$799	\$869
9100R-LM	Right handed with Latchbolt monitor	\$1024	\$984	\$984	\$944	\$1024	\$874	\$944
9100R-LMS	Right handed with Latchbolt strike monitor	\$1064	\$1024	\$1024	\$984	\$1064	\$914	\$984



How to Order

SERIES	HANDING	FINISH	OPTION (S)
9100	L	- 630	
9100 Electric Strike for tubular, vertical rod exit devices for single doors	L Left Hand/Right Hand Reverse R Right Hand/Left Hand Reverse	605 Bright Brass 606 Satin Brass 612 Satin Bronze 613E Dark Oxidized Satin Bronze Powder 629 Bright Stainless Steel 630 Satin Stainless Steel BSP Black Suede Powder	(blank) No Monitoring LM Latchbolt Monitoring LMS Latchbolt and Strike Monitoring

NOTE: Electric strike compatibility is determined at time of electric strike product release. ASSA ABLOY is not responsible for incompatibility of products that have changed in design or craftsmanship by their respective manufacturers. When compatibility is a concern, contact Customer Support for application assistance.

9100, 9200 Accessories

ITEM	DESCRIPTION	PRICE
RK-ESK1	9100 Retrofit Kit for ESK1/ESK-SGL	\$299
RK-ESK2	9200 Retrofit Kit for ESK2/ESK-DBL	\$399

9200 Series Narrow Surface Mounted Electric Strike

MODEL	DESCRIPTION	605	606	612	613E	629	630	BSP
9200N		\$1749	\$1699	\$1699	\$1609	\$1749	\$1499	\$1609
9200N-LM	Latchbolt Monitoring	\$1874	\$1824	\$1824	\$1734	\$1874	\$1624	\$1734
9200N-LMS	Latchbolt and Strike Monitoring	\$1924	\$1874	\$1874	\$1784	\$1924	\$1674	\$1784



9200 Series Wide Surface Mounted Electric Strike

MODEL	DESCRIPTION	605	606	612	613E	629	630	BSP
9200W		\$1749	\$1699	\$1699	\$1609	\$1749	\$1499	\$1609
9200W-LM	Latchbolt Monitoring	\$1874	\$1824	\$1824	\$1734	\$1874	\$1624	\$1734
9200W-LMS	Latchbolt and Strike Monitoring	\$1924	\$1874	\$1874	\$1784	\$1924	\$1674	\$1784



How to Order

SERIES	KEEPER SPACING	FINISH	OPTION (S)
9200	W	- 630	
9200 Electric Strike for tubular, vertical rod exit devices for double doors	N 4-5/8" W 8-3/8"	605 Bright Brass	(blank) No Monitoring
		606 Satin Brass	LM Latchbolt Monitoring
		612 Satin Bronze	LMS Latchbolt and Strike Monitoring
		613E Dark Oxidized Satin Bronze Powder	
		629 Bright Stainless Steel	
		630 Satin Stainless Steel	
		BSP Black Suede Powder	

NOTE: Electric strike compatibility is determined at time of electric strike product release. ASSA ABLOY is not responsible for incompatibility of products that have changed in design or craftsmanship by their respective manufacturers. When compatibility is a concern, contact Customer Support for application assistance.

9400, 9500, 9600, 9700, 9800 Surface Mounted Electric Strikes for Rim Exit Devices

MODEL	DESCRIPTION	605	606	612	613	613E	628E	629	630	BSP
9400		\$730	\$715	\$715	\$730	\$665		\$730	\$580	\$665
9400-LBM	Latchbolt monitor	\$850	\$835	\$835	\$850	\$785		\$850	\$700	\$785
9400-LBSM	Latchbolt strike monitor	\$865	\$850	\$850	\$865	\$800		\$865	\$715	\$800
9500		\$830	\$815	\$815	\$830	\$765		\$830	\$680	\$765
9500-LBM	Latchbolt monitor	\$950	\$935	\$935	\$950	\$885		\$950	\$800	\$885
9500-LBSM	Latchbolt strike monitor	\$965	\$950	\$950	\$965	\$900		\$965	\$815	\$900
9600		\$730	\$715	\$715	\$730	\$665		\$730	\$580	\$665
9600-LBM	Latchbolt monitor	\$850	\$835	\$835	\$850	\$785		\$850	\$700	\$785
9600-LBSM	Latchbolt strike monitor	\$865	\$850	\$850	\$865	\$800		\$865	\$715	\$800
9700		\$845	\$830	\$830	\$845	\$780		\$845	\$695	\$780
9700-LBM	Latchbolt monitor	\$965	\$950	\$950	\$965	\$900		\$965	\$815	\$900
9700-LBSM	Latchbolt strike monitor	\$980	\$965	\$965	\$980	\$915		\$980	\$830	\$915
9800		\$845	\$830			\$780	\$780	\$845	\$695	\$780

Accessories

ITEM	DESCRIPTION	PRICE
9000-MTK	Metal template installation kit	\$89
SMB	Surface mounting box	\$244

Spacer Plates/ Brackets

MODEL	DESCRIPTION	613E	628	628E	630	BSP
9000-108	1/8" Spacer plate	\$54		\$54	\$39	\$54
9000-116	1/16" Spacer plate	\$54		\$54	\$39	\$54
9000-ASB	Aluminum spacer bracket	\$128	\$117			\$128

How to Order Specify quantity and the following information. Order related products separately.

SERIES	FINISH	OPTION(S)
9600	- 630	- LBM
9400 Surface Mounted Electric Strike for 1/2" Pullman Exit Device; no faceplates required	605 Bright Brass 606 Satin Brass	LBM Latchbolt Monitor LBSM Latchbolt Strike Monitor
9500 Surface Mounted Electric Strike for 3/4" Pullman, fire rated; no faceplates required	612 Satin Bronze 613 Bronze Toned	
9600 Surface Mounted Electric Strike for 3/4" Pullman Rim Exit Devices, non-fire rated; no faceplates required	613E Dark Oxidized Satin Bronze Powder 629 Bright Stainless Steel	
9700 Surface Mounted Electric Strike for Corbin Russwin SecureBolt® and ASSA ABLOY Accentra™**Rim Exit Devices; no faceplates required	628E* Satin Aluminum Powder 630 Satin Stainless Steel	
9800 Surface Mounted Electric Strike for Adams Rite® Starwheel and Interlocking Rim Exit Devices; no faceplates required	BSP Black Suede Powder	

*Only Available on 9800 ** Formerly Yale Commercial



Folger Adam SB:310-1(1/2)

Electric Strike Bodies

ITEM	DESCRIPTION	PRICE
SB:310-1(1/2)-12D		\$746
SB:310-1(1/2)-24D		\$746
SB:310-1(1/2)-F-12D	Fail safe	\$746
SB:310-1(1/2)-F-24D	Fail safe	\$746
SB:310-1(1/2)-12D-LCBMA		\$935
SB:310-1(1/2)-24D-LCBMA		\$935
SB:310-1(1/2)-F-12D-LCBMA	Fail safe	\$935
SB:310-1(1/2)-F-24D-LCBMA	Fail safe	\$935



Folger Adam SB:310-1(3/4)

Electric Strike Bodies

ITEM	DESCRIPTION	PRICE
SB:310-1(3/4)-12D		\$746
SB:310-1(3/4)-24D		\$746
SB:310-1(3/4)-F-12D	Fail safe	\$746
SB:310-1(3/4)-F-24D	Fail safe	\$746
SB:310-1(3/4)-12D-LCBMA		\$935
SB:310-1(3/4)-24D-LCBMA		\$935
SB:310-1(3/4)-F-12D-LCBMA	Fail safe	\$935
SB:310-1(3/4)-F-24D-LCBMA	Fail safe	\$935

Folger Adam SB:310-1(1)

Electric Strike Bodies

ITEM	DESCRIPTION	PRICE
SB:310-1(1)-12D		\$746
SB:310-1(1)-24D		\$746
SB:310-1(1)-F-12D	Fail safe	\$746
SB:310-1(1)-F-24D	Fail safe	\$746
SB:310-1(1)-12D-LCBMA		\$935
SB:310-1(1)-24D-LCBMA		\$935
SB:310-1(1)-F-12D-LCBMA	Fail safe	\$935
SB:310-1(1)-F-24D-LCBMA	Fail safe	\$935

Folger Adam SB:310-1(PK)

Electric Strike Bodies

ITEM	DESCRIPTION	PRICE
SB:310-1(PK)-12D		\$746
SB:310-1(PK)-24D		\$746
SB:310-1(PK)-F-12D	Fail safe	\$746
SB:310-1(PK)-F-24D	Fail safe	\$746
SB:310-1(PK)-12D-LCBMA		\$935
SB:310-1(PK)-24D-LCBMA		\$935
SB:310-1(PK)-F-12D-LCBMA	Fail safe	\$935
SB:310-1(PK)-F-24D-LCBMA	Fail safe	\$935

Folger Adam SB:310-1(SK)

Electric Strike Bodies

ITEM	DESCRIPTION	PRICE
SB:310-1(SK)-12D		\$775
SB:310-1(SK)-24D		\$775
SB:310-1(SK)-F-12D	Fail safe	\$775
SB:310-1(SK)-F-24D	Fail safe	\$775
SB:310-1(SK)-12D-LCBMA		\$964
SB:310-1(SK)-24D-LCBMA		\$964
SB:310-1(SK)-F-12D-LCBMA	Fail safe	\$964
SB:310-1(SK)-F-24D-LCBMA	Fail safe	\$964

How to Order Specify quantity and the following information. Order related products separately.

PREFIX	SERIES	KEEPER STYLE	FAIL SAFE/SECURE	VOLTAGE	OPTION(S)
SB	310-1	(3/4)	- F	- 24D	- LCBMA
Strike BODY ONLY					
SB Strike Body	310-1 Strike Body Only	(1/2) 1/2" keeper (3/4) 3/4" keeper (1) 1" keeper (PK) For use with 3/4" Pullman style latchbolts (SK) For use with Corbin Russwin® Securebolt® and ASSA ABLOY ACCENTRA™* Squarebolt® style rim exit devices	(blank) Fail Secure (Standard) F Fail Safe	12D 12 Volt 24D 24 Volt	LCBMA Latchbolt & locking cam monitor with auxiliary switch

* Formerly Yale Commercial

Folger Adam 310-2 Electric Strike for Latchbolt Locks

MODEL	DESCRIPTION	605	606	612	613	629	630
310-2-12D		\$1106	\$1062	\$1062	\$1002	\$1106	\$951
310-2-24D		\$1106	\$1062	\$1062	\$1002	\$1106	\$951
310-2-F-12D	Fail safe	\$1106	\$1062	\$1062	\$1002	\$1106	\$951
310-2-F-24D	Fail safe	\$1106	\$1062	\$1062	\$1002	\$1106	\$951
310-2-12D-LCBMA		\$1295	\$1250	\$1250	\$1203	\$1295	\$1139
310-2-24D-LCBMA		\$1295	\$1250	\$1250	\$1203	\$1295	\$1139
310-2-F-12D-LCBMA	Fail safe	\$1295	\$1250	\$1250	\$1203	\$1295	\$1139
310-2-F-24D-LCBMA	Fail safe	\$1295	\$1250	\$1250	\$1203	\$1295	\$1139

Folger Adam 310-2 3/4 Electric Strike for Latchbolt Locks

MODEL	DESCRIPTION	605	606	612	613	629	630
310-2 3/4-12D		\$1224	\$1183	\$1183	\$1137	\$1222	\$1084
310-2 3/4-24D		\$1224	\$1183	\$1183	\$1137	\$1222	\$1084
310-2 3/4-F-12D	Fail safe	\$1224	\$1183	\$1183	\$1137	\$1222	\$1084
310-2 3/4-F-24D	Fail safe	\$1224	\$1183	\$1183	\$1137	\$1222	\$1084
310-2 3/4-12D-LCBMA		\$1427	\$1372	\$1372	\$1322	\$1410	\$1272
310-2 3/4-24D-LCBMA		\$1427	\$1372	\$1372	\$1322	\$1410	\$1272
310-2 3/4-F-12D-LCBMA	Fail safe	\$1427	\$1372	\$1372	\$1322	\$1410	\$1272
310-2 3/4-F-24D-LCBMA	Fail safe	\$1427	\$1372	\$1372	\$1322	\$1410	\$1272

Folger Adam 310-2 3/4OB Electric Strike for Latchbolt Locks

MODEL	DESCRIPTION	605	606	612	613	629	630
310-2 3/4OB-12D		\$1499	\$1456	\$1456	\$1412	\$1499	\$1342
310-2 3/4OB-24D		\$1499	\$1456	\$1456	\$1412	\$1499	\$1342
310-2 3/4OB-F-12D	Fail safe	\$1499	\$1456	\$1456	\$1412	\$1499	\$1342
310-2 3/4OB-F-24D	Fail safe	\$1499	\$1456	\$1456	\$1412	\$1499	\$1342

Folger Adam 310-3-1 Electric Strike for Latchbolt Locks & Deadbolts

MODEL	DESCRIPTION	605	606	612	613	629	630
310-3-1-12D		\$1435	\$1413	\$1413	\$1364	\$1435	\$1359
310-3-1-24D		\$1435	\$1413	\$1413	\$1364	\$1435	\$1359
310-3-1-F-12D	Fail safe	\$1435	\$1413	\$1413	\$1364	\$1435	\$1359
310-3-1-F-24D	Fail safe	\$1435	\$1413	\$1413	\$1364	\$1435	\$1359
310-3-1-12D-LCBMA		\$1635	\$1601	\$1601	\$1556	\$1635	\$1547
310-3-1-24D-LCBMA		\$1635	\$1601	\$1601	\$1556	\$1635	\$1547
310-3-1-F-12D-LCBMA	Fail safe	\$1635	\$1601	\$1601	\$1556	\$1635	\$1547
310-3-1-F-24D-LCBMA	Fail safe	\$1635	\$1601	\$1601	\$1556	\$1635	\$1547

How to Order *Specify quantity and the following information. Order related products separately.*

SERIES	FAIL SAFE/SECURE	VOLTAGE	FINISH	OPTION(S)
310-2	- F	- 24D	- 613	- LCBMA
KEEPER STYLE				
310-2 1/2" keeper standard; for up to a 5/8" throw latchbolt	(blank) Fail Secure (Standard)	12D 12 Volt 24D 24 Volt	605 Bright Brass 606 Satin Brass	LCBMA* Latchbolt & locking cam monitor with auxiliary switch
310-2 3/4 3/4" keeper standard; for up to a 3/4" throw latchbolt without deadbolt	F Fail Safe		612 Satin Bronze 613 Bronze Toned	
310-2 3/4OB* 3/4" keeper standard; for a pair of doors without a door coordinator			629 Bright Stainless Steel 630 Satin Stainless Steel	
310-3-1 1" keeper standard; for up to a 3/4" throw latchbolt and a 1" deadbolt				

*LCBMA not available with 310-2 3/4OB.



Faceplates

MODEL	605	606	612	613	629	630
FP-310-2	\$355	\$309	\$309	\$263	\$355	\$210

Faceplates

MODEL	605	606	612	613	629	630
FP-310-2-34	\$487	\$447	\$447	\$397	\$485	\$345

Faceplates

MODEL	605	606	612	613	629	630
FP-310-2-34OB	\$750	\$709	\$716	\$663	\$750	\$605

Faceplates

MODEL	605	606	612	613	629	630
FP-310-3-1	\$701	\$665	\$665	\$619	\$701	\$625

How to Order

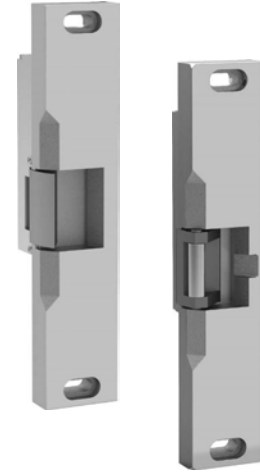
PREFIX	SERIES	FINISH
FP	- 310-2 3/4OB	- 630
FACEPLATE ONLY		
FP Faceplate	310-2 1/2" keeper standard; for up to a 5/8" throw latchbolt	605 Bright Brass 606 Satin Brass
	310-2 3/4 3/4" keeper standard; for up to a 3/4" throw latchbolt without deadbolt	612 Satin Bronze 613 Bronze Toned
	310-2 3/4OB 3/4" keeper standard; for a pair of doors without a door coordinator	629 Bright Stainless Steel 630 Satin Stainless Steel
	310-3-1 1" keeper standard; for up to a 3/4" throw latchbolt and a 1" deadbolt	

Folger Adam 310-4 Electric Strike for Pullman Rim Exit Devices

MODEL	DESCRIPTION	605	606	612	613	629	630
310-4-12D		\$1143	\$1100	\$1100	\$1048	\$1143	\$995
310-4-24D		\$1143	\$1100	\$1100	\$1048	\$1143	\$995
310-4-F-12D	Fail safe	\$1143	\$1100	\$1100	\$1048	\$1143	\$995
310-4-F-24D	Fail safe	\$1143	\$1100	\$1100	\$1048	\$1143	\$995
310-4-12D-LCBMA		\$1339	\$1287	\$1287	\$1235	\$1339	\$1181
310-4-24D-LCBMA		\$1339	\$1287	\$1287	\$1235	\$1339	\$1181
310-4-F-12D-LCBMA	Fail safe	\$1339	\$1287	\$1287	\$1235	\$1339	\$1181
310-4-F-24D-LCBMA	Fail safe	\$1339	\$1287	\$1287	\$1235	\$1339	\$1181

Folger Adam 310-4(S) Electric Strike for Squarebolt® Rim Exit Device

MODEL	DESCRIPTION	605	606	612	613	629	630
310-4(S)-12D		\$1197	\$1157	\$1157	\$1108	\$1197	\$1056
310-4(S)-24D		\$1197	\$1157	\$1157	\$1108	\$1197	\$1056
310-4(S)-F-12D	Fail safe	\$1197	\$1157	\$1157	\$1108	\$1197	\$1056
310-4(S)-F-24D	Fail safe	\$1197	\$1157	\$1157	\$1108	\$1197	\$1056
310-4(S)-12D-LCBMA		\$1399	\$1358	\$1358	\$1307	\$1399	\$1244
310-4(S)-24D-LCBMA		\$1399	\$1358	\$1358	\$1307	\$1399	\$1244
310-4(S)-F-12D-LCBMA	Fail safe	\$1399	\$1358	\$1358	\$1307	\$1399	\$1244
310-4(S)-F-24D-LCBMA	Fail safe	\$1399	\$1358	\$1358	\$1307	\$1399	\$1244



How to Order *Specify quantity and the following information. Order related products separately.*

SERIES	FAIL SAFE/SECURE	VOLTAGE	FINISH	OPTION(S)
310-4 (S)	- F	- 24D	- 613	- LCBMA
KEEPER STYLE				
310-4 PK keeper standard; for use with 3/4" Pullman style latchbolts	(blank) Fail Secure (Standard) F Fail Safe	12D 12 Volt 24D 24 Volt	605 Bright Brass 606 Satin Brass 612 Satin Bronze 613 Bronze Toned 629 Bright Stainless Steel 630 Satin Stainless Steel	LCBMA* Latchbolt & locking cam monitor with auxiliary switch
310-4(S) SK keeper standard; for use with Corbin Russwin® Securebolt® and ASSA ABLOY ACCENTRA™** Squarebolt® style rim exit devices style rim exit devices				

*LCBMA not available with 310-2 3/4OB. ** Formerly Yale Commercial

Faceplates

MODEL	605	606	612	613	629	630
FP-310-4	\$404	\$361	\$361	\$307	\$404	\$252

Faceplates

MODEL	605	606	612	613	629	630
FP-310-4-SK	\$440	\$403	\$403	\$351	\$440	\$296

How to Order

PREFIX	SERIES	KEEPER STYLE	FINISH
FP	- 310-4	(SK)	- 630
FACEPLATE ONLY			
FP Faceplate	310-4	(Blank) Keeper standard; for use with 3/4" Pullman style latchbolts (SK) For use with Corbin Russwin® Securebolt® and ASSA ABLOY ACCENTRA™** Squarebolt® style rim exit devices style rim exit devices	605 Bright Brass 606 Satin Brass 612 Satin Bronze 613 Bronze Toned 629 Bright Stainless Steel 630 Satin Stainless Steel

* Formerly Yale Commercial

Folger Adam 310-4-1 Electric Strike for Surface Vertical Rods

MODEL	DESCRIPTION	605	606	612	613	629	630
310-4-1-12D		\$1938	\$1888	\$1888	\$1859	\$1938	\$1859
310-4-1-24D		\$1938	\$1888	\$1888	\$1859	\$1938	\$1859
310-4-1-F-12D	Fail safe	\$1938	\$1888	\$1888	\$1859	\$1938	\$1859
310-4-1-F-24D	Fail safe	\$1938	\$1888	\$1888	\$1859	\$1938	\$1859
310-4-1-12D-LCBMA		\$2278	\$2224	\$2224	\$2194	\$2278	\$2194
310-4-1-24D-LCBMA		\$2278	\$2224	\$2224	\$2194	\$2278	\$2194
310-4-1-F-12D-LCBMA	Fail safe	\$2278	\$2224	\$2224	\$2194	\$2278	\$2194
310-4-1-F-24D-LCBMA	Fail safe	\$2278	\$2224	\$2224	\$2194	\$2278	\$2194

Folger Adam 310-4-2 Electric Strike for Surface Vertical Rods

MODEL	DESCRIPTION	605	606	612	613	629	630
310-4-2-12D		\$1938	\$1888	\$1888	\$1859	\$1938	\$1859
310-4-2-24D		\$1938	\$1888	\$1888	\$1859	\$1938	\$1859
310-4-2-F-12D	Fail safe	\$1938	\$1888	\$1888	\$1859	\$1938	\$1859
310-4-2-F-24D	Fail safe	\$1938	\$1888	\$1888	\$1859	\$1938	\$1859
310-4-2-12D-LCBMA		\$2278	\$2224	\$2224	\$2194	\$2278	\$2194
310-4-2-24D-LCBMA		\$2278	\$2224	\$2224	\$2194	\$2278	\$2194
310-4-2-F-12D-LCBMA	Fail safe	\$2278	\$2224	\$2224	\$2194	\$2278	\$2194
310-4-2-F-24D-LCBMA	Fail safe	\$2278	\$2224	\$2224	\$2194	\$2278	\$2194

Folger Adam 310-4-3 Electric Strike for Surface Vertical Rods

MODEL	DESCRIPTION	605	606	612	613	629	630
310-4-3-12D		\$2030	\$1983	\$1983	\$1947	\$2030	\$1947
310-4-3-24D		\$2030	\$1983	\$1983	\$1947	\$2030	\$1947
310-4-3-F-12D	Fail safe	\$2030	\$1983	\$1983	\$1947	\$2030	\$1947
310-4-3-F-24D	Fail safe	\$2030	\$1983	\$1983	\$1947	\$2030	\$1947
310-4-3-12D-LCBMA		\$2366	\$2320	\$2320	\$2282	\$2366	\$2282
310-4-3-24D-LCBMA		\$2366	\$2320	\$2320	\$2282	\$2366	\$2282
310-4-3-F-12D-LCBMA	Fail safe	\$2366	\$2320	\$2320	\$2282	\$2366	\$2282
310-4-3-F-24D-LCBMA	Fail safe	\$2366	\$2320	\$2320	\$2282	\$2366	\$2282

Folger Adam 310-4-30 Electric Strike for Surface Vertical Rods

MODEL	DESCRIPTION	605	606	612	613	629	630
310-4-30-12D		\$2030	\$1983	\$1983	\$1947	\$2030	\$1947
310-4-30-24D		\$2030	\$1983	\$1983	\$1947	\$2030	\$1947
310-4-30-F-12D	Fail safe	\$2030	\$1983	\$1983	\$1947	\$2030	\$1947
310-4-30-F-24D	Fail safe	\$2030	\$1983	\$1983	\$1947	\$2030	\$1947
310-4-30-12D-LCBMA		\$2366	\$2320	\$2320	\$2282	\$2366	\$2282
310-4-30-24D-LCBMA		\$2366	\$2320	\$2320	\$2282	\$2366	\$2282
310-4-30-F-12D-LCBMA	Fail safe	\$2366	\$2320	\$2320	\$2282	\$2366	\$2282
310-4-30-F-24D-LCBMA	Fail safe	\$2366	\$2320	\$2320	\$2282	\$2366	\$2282

How to Order *Specify quantity and the following information. Order related products separately.*

SERIES	FAIL SAFE/SECURE	VOLTAGE	FINISH	OPTION(S)
310-4-X	F	- 24D	- 612	-LCBMA
ROD SPACING				
1 For use with vertical rod spacing between 4" and 4-3/4"	(blank) Fail Secure (Standard)	12D 12 Volt	605 Bright Brass	LCBMA Latchbolt & locking cam monitor with auxiliary switch
2 For use with vertical rod spacing between 4-5/8" and 5-3/8"		24D 24 Volt	606 Satin Brass	
3 For use with vertical rod spacing between 5-1/4" and 6"	F Fail Safe		612 Satin Bronze	
30 For use with vertical rod spacing between 2-5/8" and 3-3/8"			613 Bronze Toned	
			629 Bright Stainless Steel	
			630 Satin Stainless Steel	



INSTALLATION NOTE: Double-door models are available with four different center-to-center dimensions between latchbolt keepers. Keepers are wide enough to compensate for vertical rod exit bolts, which may be as much as 3/8" (10 mm) off center-to-center dimension, either way. When using an electric strike in conjunction with a vertical rod exit device, it is necessary that:

1. The bottom rod of the exit device be removed or made inoperative
2. The latchbolt of the exit device be the "Pullman" or beveled type
3. The latchbolt be free-latching and remain projected while the door is open. Mechanisms that hold the latchbolt retracted while the door is open, and automatically release it when the door is closed, must be removed or made inoperative.

Faceplates

MODEL	605	606	612	613	629	630
FP-310-4-1	\$586	\$534	\$534	\$523	\$586	\$523

Faceplates

MODEL	605	606	612	613	629	630
FP-310-4-2	\$586	\$534	\$534	\$523	\$586	\$523

Faceplates

MODEL	605	606	612	613	630
FP-310-4-3	\$677	\$627	\$627	\$613	\$613

Faceplates

MODEL	605	606	612	613	630
FP-310-4-30	\$677	\$627	\$627	\$613	\$613

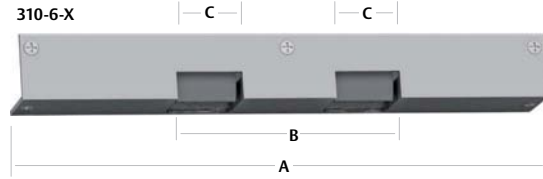
How to Order

PREFIX	SERIES	FINISH
FP	- 310-4-X	- 630
FACEPLATE ONLY		
FP Faceplate	1 For use with vertical rod spacing between 4" and 4-3/4"	605 Bright Brass
		606 Satin Brass
		612 Satin Bronze
	2 For use with vertical rod spacing between 4-5/8" and 5-3/8"	613 Bronze Toned
		629 Bright Stainless Steel
	30 For use with vertical rod spacing between 2-5/8" and 3-3/8"	630 Satin Stainless Steel



Folger Adam 310-6-1 Electric Strike for Concealed Vertical Rods

MODEL	DESCRIPTION	612	627
310-6-1-12D		\$2184	\$1875
310-6-1-24D		\$2184	\$1875
310-6-1-F-12D	Fail safe	\$2184	\$1875
310-6-1-F-24	Fail safe	\$2184	\$1875
310-6-1-12D-LCBMA		\$2518	\$2229
310-6-1-24D-LCBMA		\$2518	\$2229
310-6-1-F-12D-LCBMA	Fail safe	\$2518	\$2229
310-6-1-F-24D-LCBMA	Fail safe	\$2518	\$2229



	A	B	C	D	E
310-6-1	14-1/2" [368.3mm]	4-3/8" [111.125mm]	1-13/16" [46mm]	1-3/4" [44.45mm]	1-3/4" [44.45mm]
310-6-2	15-1/8" [384.2mm]	5" [127mm]	1-13/16" [46mm]	1-3/4" [44.45mm]	1-3/4" [44.45mm]
310-6-3	15-3/4" [400.05mm]	5-5/8" [142.8mm]	1-13/16" [46mm]	1-3/4" [44.45mm]	1-3/4" [44.45mm]
310-6-30	13-1/8" [333.4mm]	3" [76.2mm]	1-13/16" [46mm]	1-3/4" [44.45mm]	1-3/4" [44.45mm]
310-6-8	10-7/8" [276.3mm]		1-13/16" [46mm]	1-3/4" [44.45mm]	1-3/4" [44.45mm]

Folger Adam 310-6-2 Electric Strike for Concealed Vertical Rods

MODEL	DESCRIPTION	612	627
310-6-2-12D		\$2184	\$1875
310-6-2-24D		\$2184	\$1875
310-6-2-F-12D	Fail safe	\$2184	\$1875
310-6-2-F-24D	Fail safe	\$2184	\$1875
310-6-2-12D-LCBMA		\$2518	\$2229
310-6-2-24D-LCBMA		\$2518	\$2229
310-6-2-F-12D-LCBMA	Fail safe	\$2518	\$2229
310-6-2-F-24D-LCBMA	Fail safe	\$2518	\$2229

Folger Adam 310-6-3 Electric Strike for Concealed Vertical Rods

MODEL	DESCRIPTION	612	627
310-6-3-12D		\$2184	\$1875
310-6-3-24D		\$2184	\$1875
310-6-3-F-12D		\$2184	\$1875
310-6-3-F-24D		\$2184	\$1875
310-6-3-12D-LCBMA		\$2518	\$2229
310-6-3-24D-LCBMA		\$2518	\$2229
310-6-3-F-12D-LCBMA		\$2518	\$2229
310-6-3-F-24D-LCBMA		\$2518	\$2229

Folger Adam 310-6-8 Electric Strike for Concealed Vertical Rods

MODEL	DESCRIPTION	612	627
310-6-8-12D		\$1530	\$1125
310-6-8-24D		\$1530	\$1125
310-6-8-F-12D	Fail safe	\$1530	\$1125
310-6-8-F-24D	Fail safe	\$1530	\$1125
310-6-8-12D-LCBMA		\$1742	\$1337
310-6-8-24D-LCBMA		\$1742	\$1337
310-6-8-F-12D-LCBMA	Fail safe	\$1742	\$1337
310-6-8-F-24D-LCBMA	Fail safe	\$1742	\$1337

Folger Adam 310-6-30 Electric Strike for Concealed Vertical Rods

MODEL	DESCRIPTION	612	627
310-6-30-12D		\$2184	\$1875
310-6-30-24D		\$2184	\$1875
310-6-30-F-12D	Fail safe	\$2184	\$1875
310-6-30-F-24D	Fail safe	\$2184	\$1875
310-6-30-12D-LCBMA		\$2518	\$2229
310-6-30-24D-LCBMA		\$2518	\$2229
310-6-30-F-12D-LCBMA	Fail safe	\$2518	\$2229
310-6-30-F-24D-LCBMA	Fail safe	\$2518	\$2229

INSTALLATION NOTE: Double-door models are available with four different center-to-center dimensions between latchbolt keepers. Keepers are wide enough to compensate for vertical rod exit bolts, which may be as much as 3/8" (10 mm) off center-to-center dimension, either way. When using an electric strike in conjunction with a vertical rod exit device, it is necessary that:

1. The bottom rod of the exit device be removed or made inoperative
2. The latchbolt of the exit device be the "Pullman" or beveled type
3. The latchbolt be free-latching and remain projected while the door is open. Mechanisms that hold the latchbolt retracted while the door is open, and automatically release it when the door is closed, must be removed or made inoperative.

How to Orders & Faceplates on next page

Folger Adam 310-6-1— 310-6-30 Electric Strikes for Concealed Vertical Rods **Continued**



How to Order *Specify quantity and the following information. Order related products separately.*

SERIES	KEEPER STYLE	FAIL SAFE/SECURE	VOLTAGE	FINISH	OPTION(S)
310-6-X	(PK)	– F	– 24D	– 627	– LCBMA
ROD SPACING					
1 For use with vertical rod spacing between 4" and 4-3/4"	(PK) For use with 3/4" Pullman style latchbolts	(blank) Fail Secure (Standard)	12D 12 Volt	612 Satin Bronze	LCBMA Latchbolt & locking cam monitor with auxiliary switch
2 For use with vertical rod spacing between 4-5/8" and 5-3/8"			24D 24 Volt		
3 For use with vertical rod spacing between 5-1/4" and 6"		F Fail Safe	627 Satin Aluminum		
8 For only the active leaf of a pair of doors					
30 For use with vertical rod spacing between 2-5/8" and 3-3/8"					

Faceplates

MODEL	612	627
FP-310-6-1	\$854	\$538

Faceplates

MODEL	612	627
FP-310-6-2	\$854	\$538

Faceplates

MODEL	612	627
FP-310-6-3	\$854	\$538

Faceplates

MODEL	612	627
FP-310-6-8	\$854	\$538

Faceplates

MODEL	612	627
FP-310-6-30	\$854	\$538

How to Order

PREFIX	SERIES	KEEPER STYLE	FINISH
FP	– 310-6-X	(PK)	– 612
FACEPLATE ONLY			
FP Faceplate	1 For use with vertical rod spacing between 4" and 4-3/4" 2 For use with vertical rod spacing between 4-5/8" and 5-3/8" 3 For use with vertical rod spacing between 5-1/4" and 6" 8 For only the active leaf of a pair of doors 30 For use with vertical rod spacing between 2-5/8" and 3-3/8"	(PK) For use with 3/4" Pullman style latchbolts	612 Satin Bronze 627 Satin Aluminum

Folger Adam SB:310-1-1 Electric Strike Bodies

MODEL	DESCRIPTION	630
SB:310-1-1-12D		\$1252
SB:310-1-1-24D		\$1252
SB:310-1-1-F-12D	Fail safe	\$1252
SB:310-1-1-F-24D	Fail safe	\$1252
SB:310-1-1-12D-LCBMA		\$1614
SB:310-1-1-24D-LCBMA		\$1614
SB:310-1-1-F-12D-LCBMA	Fail safe	\$1614
SB:310-1-1-F-24D-LCBMA	Fail safe	\$1614

Folger Adam SB:310-1-2 Electric Strike Bodies

MODEL	DESCRIPTION	630
SB:310-1-2-12D		\$1252
SB:310-1-2-24D		\$1252
SB:310-1-2-F-12D	Fail safe	\$1252
SB:310-1-2-F-24D	Fail safe	\$1252
SB:310-1-2-12D-LCBMA		\$1614
SB:310-1-2-24D-LCBMA		\$1614
SB:310-1-2-F-12D-LCBMA	Fail safe	\$1614
SB:310-1-2-F-24D-LCBMA	Fail safe	\$1614

Folger Adam SB:310-1-3 Electric Strike Bodies

MODEL	DESCRIPTION	630
SB:310-1-3-12D		\$1252
SB:310-1-3-24D		\$1252
SB:310-1-3-F-12D	Fail safe	\$1252
SB:310-1-3-F-24D	Fail safe	\$1252
SB:310-1-3-12D-LCBMA		\$1614
SB:310-1-3-24D-LCBMA		\$1614
SB:310-1-3-F-12D-LCBMA	Fail safe	\$1614
SB:310-1-3-F-24D-LCBMA	Fail safe	\$1614

Folger Adam SB:310-1-30 Electric Strike Bodies

MODEL	DESCRIPTION	630
SB:310-1-30-12D		\$1252
SB:310-1-30-24D		\$1252
SB:310-1-30-F-12D	Fail safe	\$1252
SB:310-1-30-F-24D	Fail safe	\$1252
SB:310-1-30-12D-LCBMA		\$1614
SB:310-1-30-24D-LCBMA		\$1614
SB:310-1-30-F-24D-LCBMA	Fail safe	\$1614
SB:310-1-30-F-12D-LCBMA	Fail safe	\$1614

How to Order Specify quantity and the following information. Order related products separately.

PREFIX	SERIES	ROD SPACING	KEEPER STYLE	FAIL SAFE/SECURE	VOLTAGE	OPTION(S)
SB	- 310-1	- 1	(PK)	- F	- 24D	- LCBMA
STRIKE BODY ONLY						
SB Strike Body	310-1 Strike Body Only	1 For use with vertical rod spacing between 4" and 4-3/4" 2 For use with vertical rod spacing between 4-5/8" and 5-3/8" 3 For use with vertical rod spacing between 5-1/4" and 6" 30 For use with vertical rod spacing between 2-5/8" and 3-3/8"	(PK) For use with Pullman style latchbolts	(blank) Fail Secure (Standard) F Fail Safe	12D 12 Volt 24D 24 Volt	LCBMA Latchbolt & locking cam monitor with auxiliary switch

Folger Adam 712 Electric Strike for Latchbolt Locks

MODEL	DESCRIPTION	605	606	612	613	629	630
712-12D		\$1046	\$1005	\$1005	\$952	\$1005	\$897
712-24D		\$1046	\$1005	\$1005	\$952	\$1005	\$897
712-F-12D	Fail safe	\$1046	\$1005	\$1005	\$952	\$1005	\$897
712-F-24D	Fail safe	\$1046	\$1005	\$1005	\$952	\$1005	\$897
712-12D-LBMLCM		\$1237	\$1195	\$1195	\$1143	\$1195	\$1089
712-24D-LBMLCM		\$1237	\$1195	\$1195	\$1143	\$1195	\$1089
712-F-12D-LBMLCM	Fail safe	\$1237	\$1195	\$1195	\$1143	\$1195	\$1089
712-F-24D-LBMLCM	Fail safe	\$1237	\$1195	\$1195	\$1143	\$1195	\$1089

Folger Adam 712-75 Electric Strike for Latchbolt Locks

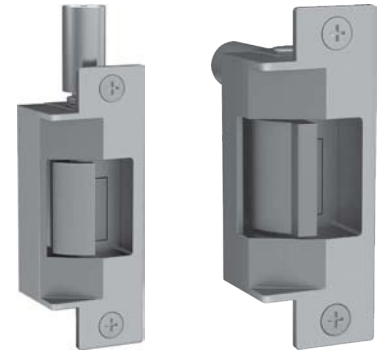
MODEL	DESCRIPTION	605	606	612	613	629	630
712-75-12D		\$1083	\$1037	\$1037	\$993	\$1037	\$934
712-75-24D		\$1083	\$1037	\$1037	\$993	\$1037	\$934
712-75-F-12D	Fail safe	\$1083	\$1037	\$1037	\$993	\$1037	\$934
712-75-F-24D	Fail safe	\$1083	\$1037	\$1037	\$993	\$1037	\$934
712-75-12D-LBMLCM		\$1274	\$1226	\$1226	\$1182	\$1226	\$1126
712-75-24D-LBMLCM		\$1274	\$1226	\$1226	\$1182	\$1226	\$1126
712-75-F-12D-LBMLCM	Fail safe	\$1274	\$1226	\$1226	\$1182	\$1226	\$1126
712-75-F-24D-LBMLCM	Fail safe	\$1274	\$1226	\$1226	\$1182	\$1226	\$1126

Folger Adam 732 Electric Strike for Latchbolt Locks

MODEL	DESCRIPTION	605	606	612	613	629	630
732-12D		\$1046	\$1005	\$1005	\$952	\$1005	\$897
732-24D		\$1046	\$1005	\$1005	\$952	\$1005	\$897
732-F-12D	Fail safe	\$1046	\$1005	\$1005	\$952	\$1005	\$897
732-F-24D	Fail safe	\$1046	\$1005	\$1005	\$952	\$1005	\$897
732-12D-LBMLCM		\$1237	\$1195	\$1195	\$1143	\$1195	\$1089
732-24D-LBMLCM		\$1237	\$1195	\$1195	\$1143	\$1195	\$1089
732-F-12D-LBMLCM	Fail safe	\$1237	\$1195	\$1195	\$1143	\$1195	\$1089
732-F-24D-LBMLCM	Fail safe	\$1237	\$1195	\$1195	\$1143	\$1195	\$1089

Folger Adam 732-75 Electric Strike for Latchbolt Locks

MODEL	DESCRIPTION	605	606	612	613	629	630
732-75-12D		\$1083	\$1037	\$1037	\$993	\$1037	\$934
732-75-24D		\$1083	\$1037	\$1037	\$993	\$1037	\$934
732-75-F-12D	Fail safe	\$1083	\$1037	\$1037	\$993	\$1037	\$934
732-75-F-24D	Fail safe	\$1083	\$1037	\$1037	\$993	\$1037	\$934
732-75-12D-LBMLCM		\$1274	\$1226	\$1226	\$1182	\$1226	\$1126
732-75-24D-LBMLCM		\$1274	\$1226	\$1226	\$1182	\$1226	\$1126
732-75-F-12D-LBMLCM	Fail safe	\$1274	\$1226	\$1226	\$1182	\$1226	\$1126
732-75-F-24D-LBMLCM	Fail safe	\$1274	\$1226	\$1226	\$1182	\$1226	\$1126



700 & 742 Series | LBMLCM: When using LBMLCM with a SARGENT 78/8200 Series or BEST 40 Series Mortise Lock, a 1/2" or 5/8" keeper latchbolt detection will be dependent on the door gap in order to ensure functionality. Consult customer support regarding use with other manufacturers.

712-75, 732-75 and 742-75: The LBMLCM option is compatible with SARGENT 78/8200 Series or BEST 40 Series 3/4" throw mortise lock latchbolts in hollow metal and wood frame applications. Monitoring capabilities are dependent on a maximum 1/8" door gap in order to ensure functionality. Consult customer support regarding use with other manufacturers.

How to Order *Specify quantity and the following information. Order related products separately.*

SOLENOID ORIENTATION	KEEPER STYLE	FAIL SAFE/SECURE	VOLTAGE	FINISH	OPTION(S)
712		- F	- 24D	- 630	- LBMLCM
712 Vertical for hollow metal frames	(blank) 1/2" PK Keeper for up to 5/8" latchbolt	(blank) Fail Secure (Standard)	12D 12 Volt 24D 24 Volt	605 Bright Brass 606 Satin Brass	LBMLCM Latchbolt & locking cam monitor
732 Horizontal for wood and concrete frames	-75 3/4 PK keeper for up to a 3/4" throw latchbolt without deadbolt	F Fail Safe		612 Satin Bronze 613 Bronze Toned 629 Bright Stainless Steel 630 Satin Stainless Steel	



Folger Adam SB:710 Electric Strike Bodies

MODEL	DESCRIPTION	630
SB:710-12D		\$706
SB:710-24D		\$706
SB:710-F-12D	Fail safe	\$706
SB:710-F-24D	Fail safe	\$706
SB:710-12D-LBMLCM		\$895
SB:710-24D-LBMLCM		\$895
SB:710-F-12D-LBMLCM	Fail safe	\$895
SB:710-F-24D-LBMLCM	Fail safe	\$895

Folger Adam SB:710-75 Electric Strike Bodies

MODEL	DESCRIPTION	630
SB:710-75-12D		\$706
SB:710-75-24D		\$706
SB:710-75-F-12D	Fail safe	\$706
SB:710-75-F-24D	Fail safe	\$706
SB:710-75-12D-LBMLCM		\$895
SB:710-75-24D-LBMLCM		\$895
SB:710-75-F-12D-LBMLCM	Fail safe	\$895
SB:710-75-F-24D-LBMLCM	Fail safe	\$895

Folger Adam SB:730 Electric Strike Bodies

MODEL	DESCRIPTION	630
SB:730-12D		\$706
SB:730-24D		\$706
SB:730-F-12D	Fail safe	\$706
SB:730-F-24D	Fail safe	\$706
SB:730-12D-LBMLCM		\$895
SB:730-24D-LBMLCM		\$895
SB:730-F-12D-LBMLCM	Fail safe	\$895
SB:730-F-24D-LBMLCM	Fail safe	\$895

Folger Adam SB:730-75 Electric Strike Bodies

MODEL	DESCRIPTION	630
SB:730-75-12D		\$706
SB:730-75-24D		\$706
SB:730-75-F-12D	Fail safe	\$706
SB:730-75-F-24D	Fail safe	\$706
SB:730-75-12D-LBMLCM		\$895
SB:730-75-24D-LBMLCM		\$895
SB:730-75-F-12D-LBMLCM	Fail safe	\$895
SB:730-75-F-24D-LBMLCM	Fail safe	\$895



INSTALLATION NOTE: Double-door models are available with four different center-to-center dimensions between latchbolt keepers. Keepers are wide enough to compensate for vertical rod exit bolts, which may be as much as 3/8" (10 mm) off center-to-center dimension, either way. When using an electric strike in conjunction with a vertical rod exit device, it is necessary that:

1. The bottom rod of the exit device be removed or made inoperative.
2. The latchbolt of the exit device be the "Pullman" or beveled type.
3. The latchbolt be free-latching and remain projected while the door is open. Mechanisms that hold the latchbolt retracted while the door is open, and automatically release it when the door is closed, must be removed or made inoperative.

Faceplates

MODEL	605	606	612	613	629	630
FP-712	\$347	\$307	\$307	\$254	\$307	\$198
FP-712-75	\$385	\$339	\$339	\$293	\$339	\$233

How to Order

PREFIX	SERIES	FINISH
FP	- 732-75	- 613
FACEPLATE ONLY		
FP Faceplate	712 1/2" PK keeper standard; Hollow metal frames, for up to a 5/8" throw latchbolt	605 Bright Brass
	712-75 3/4" PK keeper standard; Hollow metal frames, for up to a 3/4" throw latchbolt without deadbolt	606 Satin Brass
	732 PK keeper standard; Wood frames, for up to a 5/8" throw latchbolt	612 Satin Bronze
	732-75 3/4" PK keeper standard; Wood frames, for up to a 3/4" throw latchbolt without deadbolt	613 Bronze Toned
		629 Bright Stainless Steel
		630 Satin Stainless Steel

How to Order *Specify quantity and the following information. Order related products separately.*

PREFIX	SOLENOID ORIENTATION	KEEPER STYLE	FAIL SAFE/SECURE	VOLTAGE	OPTION(S)
SB	710		- F	- 24D	- LBMLCM
SB Strike Body Only	710 Vertical for hollow metal frames	(blank) 1/2" PK Keeper for up to 5/8" latchbolt	(blank) Fail Secure (Standard)	12D 12 Volt 24D 24 Volt	LBMLCM Latchbolt & locking cam monitor
	730 Horizontal for wood and concrete frames	-75 3/4" PK keeper for up to a 3/4" throw latchbolt without deadbolt	F Fail Safe		

Folger Adam 742-75 Complete Pacs for Latchbolt Locks

MODEL	DESCRIPTION	605	606	612	613	629	630
742-75-12D		\$1120	\$1076	\$1076	\$1023	\$1076	\$971
742-75-24D		\$1120	\$1076	\$1076	\$1023	\$1076	\$971
742-75-F-12D	Fail safe	\$1120	\$1076	\$1076	\$1023	\$1076	\$971
742-75-F-24D	Fail safe	\$1120	\$1076	\$1076	\$1023	\$1076	\$971
742-75-12D-LBMLCM		\$1309	\$1265	\$1265	\$1213	\$1265	\$1160
742-75-24D-LBMLCM		\$1309	\$1265	\$1265	\$1213	\$1265	\$1160
742-75-F-12D-LBMLCM	Fail safe	\$1309	\$1265	\$1265	\$1213	\$1265	\$1160
742-75-F-24D-LBMLCM	Fail safe	\$1309	\$1265	\$1265	\$1213	\$1265	\$1160



How to Order Complete Pacs

Specify quantity and the following information. Order related products separately.

SERIES	FAIL SAFE/SECURE	VOLTAGE	FINISH	OPTION(S)
742-75	- F	- 12D	- 613	- LBMLCM
SOLENOID ORIENTATION				
742-75 Vertical for hollow metal frames, up to 3/4" latchbolt without deadbolt	(blank) Fail Secure (Standard) F Fail Safe	12D 12 Volt 24D 24 Volt	605 Bright Brass 606 Satin Brass 612 Satin Bronze 613 Bronze Toned 629 Bright Stainless Steel 630 Satin Stainless Steel	LBMLCM Latchbolt & locking cam monitor

Faceplates

MODEL	605	606	612	613	629	630
FP-742	\$370	\$325	\$325	\$270	\$325	\$219

How to Order Faceplate Only

PREFIX	SERIES	FINISH
FP	- 742-75	- 630
FP Faceplate	742-75 Hollow metal frames, for up to a 3/4" throw latchbolt without deadbolt	605 Bright Brass 606 Satin Brass 612 Satin Bronze 613 Bronze Toned 629 Bright Stainless Steel 630 Satin Stainless Steel

Folger Adam SB740-75 Electric Strike Bodies

MODEL	DESCRIPTION	630
SB:740-75-12D		\$758
SB:740-75-24D		\$758
SB:740-75-F-12D	Fail safe	\$758
SB:740-75-F-24D	Fail safe	\$758
SB:740-75-12D-LBMLCM		\$948
SB:740-75-24D-LBMLCM		\$948
SB:740-75-F-12D-LBMLCM	Fail safe	\$948
SB:740-75-F-24D-LBMLCM	Fail safe	\$948

How to Order

Specify quantity and the following information. Order related products separately.

PREFIX	SERIES	FAIL SAFE/SECURE	VOLTAGE	OPTION(S)
SB	740-75	—	- 24D	—
STRIKE BODY ONLY				
SB Strike Body	740-75	(blank) Fail Secure (Standard) F Fail Safe	12D 12 Volt 24D 24 Volt	LBMLCM Latchbolt & locking cam monitor



700 & 742 Series | LBMLCM: When using LBMLCM with a SARGENT 78/8200 Series or BEST 40 Series Mortise Lock, a 1/2" or 5/8" keeper latchbolt detection will be dependent on the door gap in order to ensure functionality. Consult customer support regarding use with other manufacturers.

712-75, 732-75 and 742-75: The LBMLCM option is compatible with SARGENT 78/8200 Series or BEST 40 Series 3/4" throw mortise lock latchbolts in hollow metal and wood frame applications. Monitoring capabilities are dependent on a maximum 1/8" door gap in order to ensure functionality. Consult customer support regarding use with other manufacturers.



Electric Strike Accessories

Electric Strike Accessories

ITEM	DESCRIPTION	PRICE
HESCUT-MTK	For installing the 1006, 1500, 1600, 4500, 5000, 5200, 5300, 7000, and 7501 electric strikes (4-7/8" ANSI jamb preparations only)	\$100
9000-MTK	Metal template installation kit	\$89
SMB	Surface mounting box	\$244
150	Stainless steel. Installed at the edge of the door to cover the lock and electric strike. Available in 626 finish only	\$104
152	Mount inside hollow metal, wood and aluminum jambs	\$29
157	Torx screws	\$16
157D	Tamper-Resistant Torx R20 insert bit	\$46
310-2-3	Available for the Folger Adam 300 Series electric strike in standard 630 finish. Torx screws included	\$284
2001-1	Converts AC to unfiltered DC. Rated 35 V, 2 Amp. Not recommended for 1006 Electric Strike	\$42
2001M	Converts AC to unfiltered DC. Rated 35 V, 1 Amp. Includes MOV and self-resettable fuse. Not recommended for 1006 Electric Strike.	\$78
2004M	Adapter between existing HES electric strikes and ElectroLynx® connectors	\$45
2005M3	For use with HES electric strikes, input voltage must be DC.	\$119
2006M	Audible operation indicator at 24VDC, 75db at 11-3/4"	\$60
2007M	With 4" wire leads	\$27



HESCUT-MTK



9000-MTK



SMB



150



152



157



157D



310-2-3



2001-1



2001M



2004M



2005M3



2006M



2007M

Cabinet Locks

610 Multi-Purpose Electromechanical Lock

ITEM	DESCRIPTION	PRICE
610	Standard — No Monitoring	\$149
610LM	Locked State Monitoring	\$208

How to Order

Specify quantity and the following information. Order related products separately.

SERIES	OPTION(S)
610	– LM
610 Cabinet Lock	(blank) No Monitoring LM Locked State Monitoring



660 Multi-Purpose Electromechanical Lock

MODEL	BLK
660	\$175
660-LBSM	\$218
660-LBSM-20PK	\$4343
660-Preload	\$260
660-LBSM-Preload	\$302

Accessories

ITEM	DESCRIPTION	PRICE
660-KO	Key override for 660 Series Cabinet Lock	\$96

How to Order

Specify quantity and the following information. Order related products separately.

SERIES	VOLTAGE	OPTION(S)
660	– 12V	– LBSM – Preload
660 Cabinet Lock	12V 12 Volt 24V 24 Volt	(blank) No preload, no monitoring Preload Up to 15 lbs LBSM Locked state monitoring LBSM-20PK Locked state monitoring 20 pack LBSM-Preload Locked state monitoring with Preload



KP20 Series Cabinet Lock

MODEL	DESCRIPTION	BLK
KP20	Stand-alone Keypad Cabinet Lock	\$137



KS-M Mechanical Server Cabinet Lock

ITEM	DESCRIPTION	PRICE
KS-M-B	KS-M Mechanical Server Cabinet Lock with No Cylinder	\$128
KS-M-B-K1	KS-M Mechanical Server Cabinet Lock with MEDECO X4 SFIC (DGV Commercial Keyway) with 2 Keys (1 Control, 1 User)	\$234



KS200 Integrated Wired, Wiegand Access Control Server Cabinet Lock

ITEM	DESCRIPTION	PRICE
KS200-S-IPS-B	KS200-S Integrated Wired, Wiegand Server Cabinet Lock With No Cylinder and HID multiCLASS SE Card Reader, HID NFC Mobile Access Enabled	\$670
KS200-S-IPS-B-BC	KS200-S Integrated Wired, Wiegand Server Cabinet Lock With Blank Plastic SFIC Core and HID multiCLASS SE Card Reader, HID NFC Mobile Access Enabled	\$685
KS200-S-IPS-B-K1	KS200-S Integrated Wired, Wiegand Server Cabinet Lock With MEDECO X4 SFIC (DGV Commercial Keyway) with 2 Keys (1 Control, 1 User) and HID multiCLASS SE Card Reader, HID NFC Mobile Access Enabled	\$770
KS200-S-IPV040-B	KS200-S Integrated Wired, Wiegand Server Cabinet Lock With No Cylinder and HID SE PIV-I 40 Bit Card Reader, HID NFC Mobile Access Enabled	\$670
KS200-S-IPV040-B-BC	KS200-S Integrated Wired, Wiegand Server Cabinet Lock With Blank Plastic SFIC Core and HID SE PIV-I 40 Bit Card Reader, HID NFC Mobile Access Enabled	\$685
KS200-S-IPV040-B-K1	KS200-S Integrated Wired, Wiegand Server Cabinet Lock With MEDECO X4 SFIC (DGV Commercial Keyway) with 2 Keys (1 Control, 1 User) and HID SE PIV-I 40 Bit Card Reader, HID NFC Mobile Access Enabled	\$770
KS200-S-IPV064-B	KS200-S Integrated Wired, Wiegand Server Cabinet Lock With No Cylinder and HID SE PIV-I 64 Bit Card Reader, HID NFC Mobile Access Enabled	\$670
KS200-S-IPV064-B-BC	KS200-S Integrated Wired, Wiegand Server Cabinet Lock With Blank Plastic SFIC Core and HID SE PIV-I 64 Bit Card Reader, HID NFC Mobile Access Enabled	\$685
KS200-S-IPV064-B-K1	KS200-S Integrated Wired, Wiegand Server Cabinet Lock With MEDECO X4 SFIC (DGV Commercial Keyway) with 2 Keys (1 Control, 1 User) and HID SE PIV-I 64 Bit Card Reader, HID NFC Mobile Access Enabled	\$770
KS200-S-IPV075-B	KS200-S Integrated Wired, Wiegand Server Cabinet Lock With No Cylinder and HID SE PIV-I 75 Bit Card Reader, HID NFC Mobile Access Enabled	\$670
KS200-S-IPV075-B-BC	KS200-S Integrated Wired, Wiegand Server Cabinet Lock With Blank Plastic SFIC Core and HID SE PIV-I 75 Bit Card Reader, HID NFC Mobile Access Enabled	\$685
KS200-S-IPV075-B-K1	KS200-S Integrated Wired, Wiegand Server Cabinet Lock With MEDECO X4 SFIC (DGV Commercial Keyway) with 2 Keys (1 Control, 1 User) and HID SE PIV-I 75 Bit Card Reader, HID NFC Mobile Access Enabled	\$770
KS200-S-IPV128-B	KS200-S Integrated Wired, Wiegand Server Cabinet Lock With No Cylinder and HID SE PIV-I 128 Bit Card Reader, HID NFC Mobile Access Enabled	\$670
KS200-S-IPV128-B-BC	KS200-S Integrated Wired, Wiegand Server Cabinet Lock With Blank Plastic SFIC Core and HID SE PIV-I 128 Bit Card Reader, HID NFC Mobile Access Enabled	\$685
KS200-S-IPV128-B-K1	KS200-S Integrated Wired, Wiegand Server Cabinet Lock With MEDECO X4 SFIC (DGV Commercial Keyway) with 2 Keys (1 Control, 1 User) and HID SE PIV-I 128 Bit Card Reader, HID NFC Mobile Access Enabled	\$770
KS200-S-IPV200-B	KS200-S Integrated Wired, Wiegand Server Cabinet Lock With No Cylinder and HID SE PIV-I 200 Bit Card Reader, HID NFC Mobile Access Enabled	\$670
KS200-S-IPV200-B-BC	KS200-S Integrated Wired, Wiegand Server Cabinet Lock With Blank Plastic SFIC Core and HID SE PIV-I 200 Bit Card Reader, HID NFC Mobile Access Enabled	\$685
KS200-S-IPV200-B-K1	KS200-S Integrated Wired, Wiegand Server Cabinet Lock With MEDECO X4 SFIC (DGV Commercial Keyway) with 2 Keys (1 Control, 1 User) and HID SE PIV-I 200 Bit Card Reader, HID NFC Mobile Access Enabled	\$770



KS210 Integrated Wired, RS-485 OSDP Access Control Server Cabinet Lock

ITEM	DESCRIPTION	PRICE
KS210-S-IPS-B	KS210-S Integrated Wired, OSDP Server Cabinet Lock With No Cylinder and HID multiCLASS SE Card Reader, HID BLE & NFC Mobile Access Enabled	\$750
KS210-S-IPS-B-BC	KS210-S Integrated Wired, OSDP Server Cabinet Lock With Blank Plastic SFIC Core and HID multiCLASS SE Card Reader, HID BLE & NFC Mobile Access Enabled	\$765
KS210-S-IPS-B-K1	KS210-S Integrated Wired, OSDP Server Cabinet Lock With MEDECO X4 SFIC (DGV Commercial Keyway) with 2 Keys (1 Control, 1 User) and HID multiCLASS SE Card Reader, HID BLE & NFC Mobile Access Enabled	\$850
KS210-S-IPV040-B	KS210-S Integrated Wired, OSDP Server Cabinet Lock With No Cylinder and HID SE PIV-I 40 Bit Card Reader, HID BLE & NFC Mobile Access Enabled	\$750
KS210-S-IPV040-B-BC	KS210-S Integrated Wired, OSDP Server Cabinet Lock With Blank Plastic SFIC Core and HID SE PIV-I 40 Bit Card Reader, HID BLE & NFC Mobile Access Enabled	\$765
KS210-S-IPV040-B-K1	KS210-S Integrated Wired, OSDP Server Cabinet Lock With MEDECO X4 SFIC (DGV Commercial Keyway) with 2 Keys (1 Control, 1 User) and HID SE PIV-I 40 Bit Card Reader, HID BLE & NFC Mobile Access Enabled	\$850
KS210-S-IPV064-B	KS210-S Integrated Wired, OSDP Server Cabinet Lock With No Cylinder and HID SE PIV-I 64 Bit Card Reader, HID BLE & NFC Mobile Access Enabled	\$750
KS210-S-IPV064-B-BC	KS210-S Integrated Wired, OSDP Server Cabinet Lock With Blank Plastic SFIC Core and HID SE PIV-I 64 Bit Card Reader, HID BLE & NFC Mobile Access Enabled	\$765
KS210-S-IPV064-B-K1	KS210-S Integrated Wired, OSDP Server Cabinet Lock With MEDECO X4 SFIC (DGV Commercial Keyway) with 2 Keys (1 Control, 1 User) and HID SE PIV-I 64 Bit Card Reader, HID BLE & NFC Mobile Access Enabled	\$850
KS210-S-IPV075-B	KS210-S Integrated Wired, OSDP Server Cabinet Lock With No Cylinder and HID SE PIV-I 75 Bit Card Reader, HID BLE & NFC Mobile Access Enabled	\$750
KS210-S-IPV075-B-BC	KS210-S Integrated Wired, OSDP Server Cabinet Lock With Blank Plastic SFIC Core and HID SE PIV-I 75 Bit Card Reader, HID BLE & NFC Mobile Access Enabled	\$765
KS210-S-IPV075-B-K1	KS210-S Integrated Wired, OSDP Server Cabinet Lock With MEDECO X4 SFIC (DGV Commercial Keyway) with 2 Keys (1 Control, 1 User) and HID SE PIV-I 75 Bit Card Reader, HID BLE & NFC Mobile Access Enabled	\$850
KS210-S-IPV128-B	KS210-S Integrated Wired, OSDP Server Cabinet Lock With No Cylinder and HID SE PIV-I 128 Bit Card Reader, HID BLE & NFC Mobile Access Enabled	\$750
KS210-S-IPV128-B-BC	KS210-S Integrated Wired, OSDP Server Cabinet Lock With Blank Plastic SFIC Core and HID SE PIV-I 128 Bit Card Reader, HID BLE & NFC Mobile Access Enabled	\$765
KS210-S-IPV128-B-K1	KS210-S Integrated Wired, OSDP Server Cabinet Lock With MEDECO X4 SFIC (DGV Commercial Keyway) with 2 Keys (1 Control, 1 User) and HID SE PIV-I 128 Bit Card Reader, HID BLE & NFC Mobile Access Enabled	\$850
KS210-S-IPV200-B	KS210-S Integrated Wired, OSDP Server Cabinet Lock With No Cylinder and HID SE PIV-I 200 Bit Card Reader, HID BLE & NFC Mobile Access Enabled	\$750
KS210-S-IPV200-B-BC	KS210-S Integrated Wired, OSDP Server Cabinet Lock With Blank Plastic SFIC Core and HID SE PIV-I 200 Bit Card Reader, HID BLE & NFC Mobile Access Enabled	\$765
KS210-S-IPV200-B-K1	KS210-S Integrated Wired, OSDP Server Cabinet Lock With MEDECO X4 SFIC (DGV Commercial Keyway) with 2 Keys (1 Control, 1 User) and HID SE PIV-I 200 Bit Card Reader, HID BLE & NFC Mobile Access Enabled	\$850



Accessories

KS-M, KS200 & KS210 Accessories

ITEM	DESCRIPTION	PRICE
OBS-622	K Series Open Back Strike Plate for Drawers	\$31
CBL6-QC12	Lock Side Interface Cable: 6 Foot, 12 Conductor and Molex both ends	\$71
CBL12-QC12	System Side Interface Cable: 12 Foot, 12 Conductor and Molex one end, pinned one end	\$91
SFIC	KS Series MEDECO X4 SFIC Small Format Interchangeable Core (DGV Commercial Keyway) with 2 Keys (1 Control, 1 User)	\$101
SFIC-BC	KS Series SFIC Small Format Interchangeable Core Blank, Black Plastic Core	\$16
KS-DPS	KS Series Surface Mount DPS (external)	\$31
KS-CAM45	KS Series Locking Cam: 45MM—5	\$9
KS-CAM38	KS Series Locking Cam: 38MM—1	\$9

Warranties & Terms & Conditions

HES Warranties

We believe that the best products in the industry should be supported by our commitment to deliver the highest quality products and services. HES is proud to extend the most comprehensive no-fault, no-questions asked warranty coverage to all of our products and solutions. This is our expectation and commitment to you – our valued customer.



SecuriCare Warranty

SecuriCare 10-year Warranty

- Duration:** Ten years from date of shipment.
Condition: Any reason including, but not limited to, installation error, vandalism or force majeure.
Replacement: Replacement product or equivalent shipped at h.e.s.'s expense via next day air freight in most cases.
Products Covered:
- When installed with a Smart PAC III, the following electric strikes are upgraded to the 10-year warranty:
 - » 1006, 1500, 1600, 4500, 5000, 5200, 5300, 7000, 7501, 8000, 8300, 8500, 9100, 9200, 9400, 9500, 9600, 9700, 9800
 - » Folger Adam 310, 712, 732, 742



SecuriCare Warranty

SecuriCare 5-year Warranty

- Duration:** Five years from date of shipment.
Condition: Any reason including, but not limited to, installation error, vandalism or force majeure.
Replacement: Replacement product or equivalent shipped at h.e.s.'s expense via next day air freight in most cases.
Products Covered:
- Electric Strikes:
 - » 1006, 1500, 1600, 4500, 5000, 5200, 5300, 7000, 7501, 8000, 8300, 8500, 9100, 9200, 9400, 9500, 9600, 9700, 9800
 - » Folger Adam 310, 712, 732, 742



SecuriCare Warranty

SecuriCare 3-year Warranty

- Duration:** Three years from date of shipment.
Condition: Any reason, including but not limited to, installation error, vandalism or force majeure.
Replacement: Replacement product or equivalent shipped at h.e.s.'s expense via next day air freight in most cases.
Products Covered:
- Aperio® Wireless ES100 Electric Strike
 - 610, 630REL, 660, KS200, KS210 & Accessories

Check your individual product to determine warranty coverage. Batteries and consumables are not covered by HES Warranty programs. Replacement products, at HES's sole option, may be the identical item or a unit which serves as a functional replacement. If the customer has an account with HES or a valid credit card, the customer may order an advance replacement product, whereby HES will charge the customer's account for the price of the product plus next day air freight, and will credit back to the customer the full amount of the charge, including outbound freight, upon HES receipt of the original product from the customer. HES's sole and exclusive liability, and customer's sole remedy, is limited to the replacement of the HES product when delivered to HES's facility (freight and insurance charges prepaid by customer).

HES Terms & Conditions

PRICES: All prices are subject to change without notice. Prices listed on the HES website will serve as the most current list price. All shipments will be made at prices in effect at the time of order. The customer shall be responsible for payment of all applicable sales and/or use taxes and freight costs.

MINIMUM ORDER: Minimum product charge per invoice is \$150.00 USD.

PAYMENT TERMS: Net thirty (30) days from date of invoice. Interest at the rate of up to 1-1/2% per month may be charged on all past due accounts. An order received on an account which has not been paid within 45 days of the date of invoice may not be processed until the account is current. Custom orders may require a deposit.

DELIVERY TERMS: All prices are Ex-works factory. Purchaser assumes the risk of loss or damage to the goods while in transit from the point of shipment. HES reserves the right to make delivery in installments. Installments shall be separately invoiced and paid for when due. Delay in delivery of an installment shall not relieve the purchaser of its obligation to accept remaining deliveries.

FREIGHT POLICY: All Purchase Orders received with a minimum net value of \$3,500 will qualify automatically for free standard freight within the continental United States. This minimum amount applies per Purchase Order to qualify and does not include free expedited freight. Qualified orders may ship partial or ship complete at your preference. Qualified orders that ship partial will not incur freight charges. All shipments that do not qualify for free freight will be charged for freight based upon our terms in effect at the time of shipment. Customers may provide their own carrier account number for expedited freight methods or for any Purchase Order to be used to cover freight costs. Minimum amounts are subject to change without notice.

SHORTAGE: Any claim for shortages must be made to HES in writing within one (1) week of receipt of merchandise.

WARRANTY RETURNS: A Customer Care Form (CCF) for defective product must be obtained from HES before any merchandise can be returned. CCF's are valid for sixty (60) days from date of issuance. Goods returned under the terms of MagnaCare® and SecuriCare® Warranties may require a copy of the original invoice.

RETURNS: A Customer Care Form (CCF) must be obtained from HES before any merchandise can be returned. CCF's are valid for sixty (60) days from date of issuance. Items that are not factory sealed, or that are returned later than 90 days from the date of receipt are subject to a restocking charge plus an additional charge for any damage.

CANCELLATIONS: Any order may be subject to a 5% cancellation charge for catalog items. Cancellation of non-catalog or custom items will be subject to a 20% cancellation charge plus all costs (both direct and indirect) incurred by manufacturing at the point of cancellation that are properly allocated to the cancelled item(s).

LIMITATION OF LIABILITY: Neither party will be liable to the other for any delay or failure in performance arising directly out of war, sabotage, insurrection, riot, and any other act of civil disobedience, act of public enemy, fire, explosion, flood, storm, or other act of God or nature, or similar cause beyond its reasonable control, including shortage or unavailability of labor or materials. If, notwithstanding the foregoing limitations, HES has any liability to the purchaser, the purchaser agrees that the total liability to the purchaser for all losses, damages, and causes of action, whether in contract, equity, tort (including without limitation, negligence and gross negligence), or otherwise, will not exceed the amount the purchaser paid to HES for the products (including, without limitation, incidental or consequential damages, damages for lost profits or business interruption, and punitive damages).

NO THIRD PARTY LIABILITY If the purchaser uses the HES Products on behalf of others or provides to others any products referenced herein, the HES Parties shall have no liability to such persons whatsoever, and the purchaser agree to defend and indemnify the HES Parties from any and all claims and demands asserted against them, and from any legal fees, costs and other expenses that the HES Parties incur therewith.



hesinnovations.com



ASSA ABLOY

The ASSA ABLOY Group is the global leader in access solutions. Every day we help people feel safe, secure and experience a more open world.



USA

800 626 7590 | f. 866 582 4641 | hesinnovations.com

customerservice.hes@assaabloy.com

techsupport.hes@assaabloy.com

orders.hes@assaabloy.com

CANADA

800 461 3007 | f. 800 461 8989 | assaabloydss.ca

sales.dss.ca@assaabloy.com

orders.dss.ca@assaabloy.com

Printed in the U.S.A.

Patent pending and/or patent www.assaabloydss.com/patents

Copyright © 2024, Hanchett Entry Systems, Inc., an ASSA ABLOY Group company. All rights reserved. Reproduction in whole or in part without the express written permission of Hanchett Entry Systems, Inc. is prohibited. HES-119-0524

hesinnovations.com