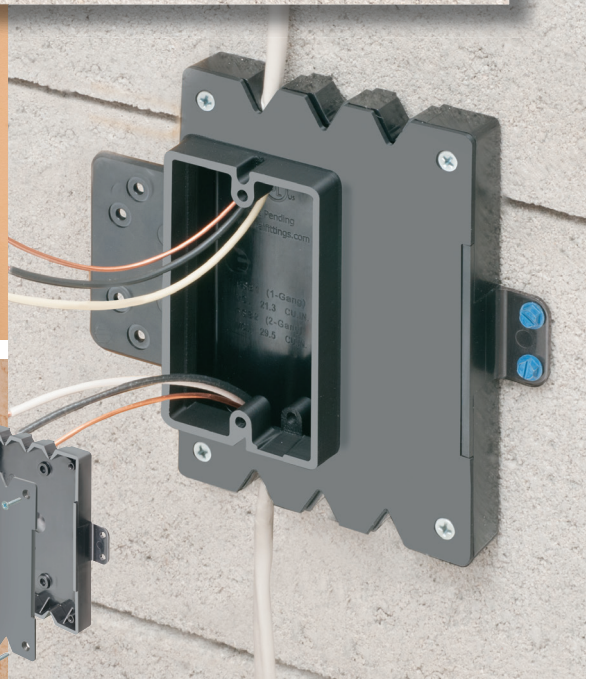
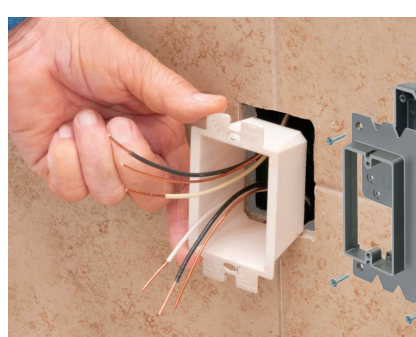
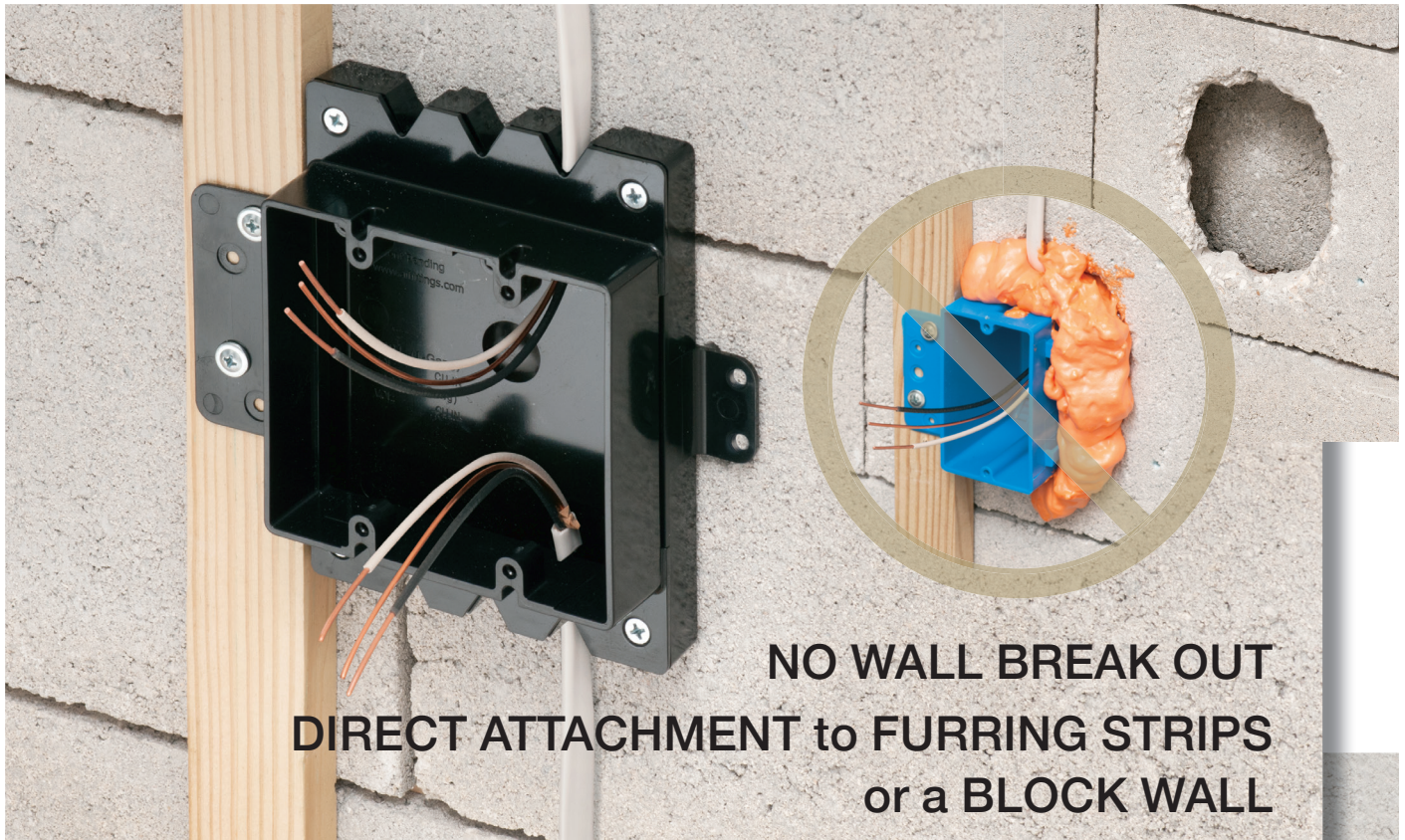




Arlington®

LARGE VOLUME & LOW PROFILE **FURRED WALL BOX**

Simplifies Block Wall Installations



LARGE VOLUME Furred Wall Box

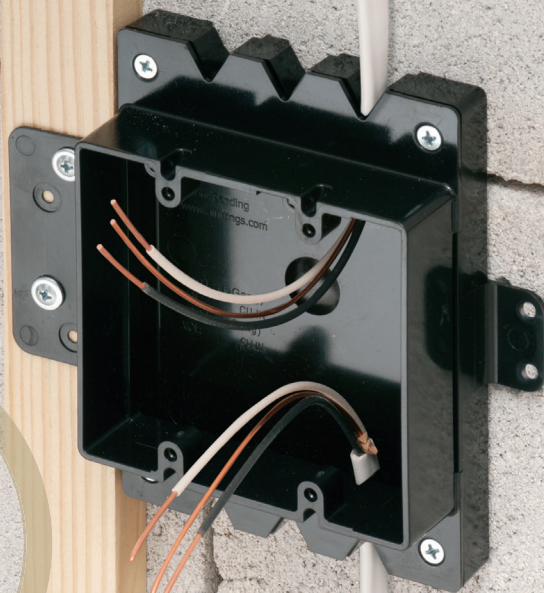
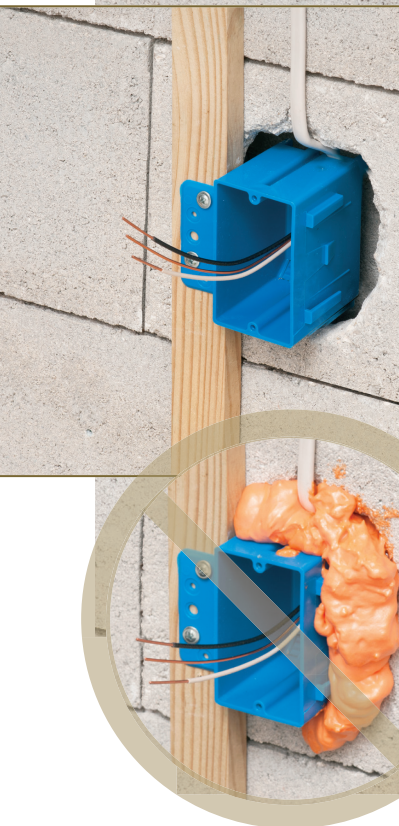
TIME-SAVING KITS WITH COVERS

Don't Break the Bank or your Wall.
Simplify Block Wall Installations!

Go from this...

to Direct Attachment to a
Furring Strip or Block Wall

NEW
FSB series



FSB2
Two-gang
on Drywall
furring strip



FSB1
Single gang
on Block Wall

**Furred Wall Box
Eliminates
Installation
Steps!**

SAVE
15 MINUTES
and \$15.00¹
per BOX

NO new furring strips
NO wall break out
NO sealing hole



PATENT PENDING



Arlington®

Arlington's new **Furred Wall Box™** kit makes challenging outlet box installations fast and easy!

Versatile mounting options Our high strength FSB series outlet box kits are designed for use with existing 1x2 drywall furring strips – but can also be mounted directly to a concrete block wall *between* furring strips. Place the box or outlet where it's needed.

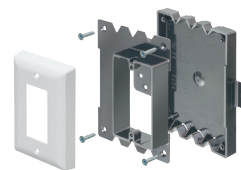
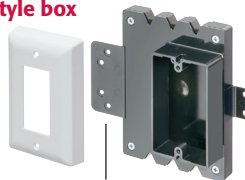
Integral cable securement – No pullout!
Accommodates GFCI and USB receptacles.
Convenient kits simplify ordering of FSB1 and FSB2.

Large, pancake-style box
with cover

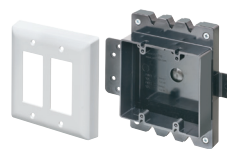
High-strength
No breakage
in cold weather

**Integral
Mounting Flanges** for furring strip or block wall

Largest Box Volume in the Industry
Single gang **FSB1** - 21.3 cu. in.
Two-gang **FSB2** - 29.5 cu. in.



FSB1 Kit
exploded



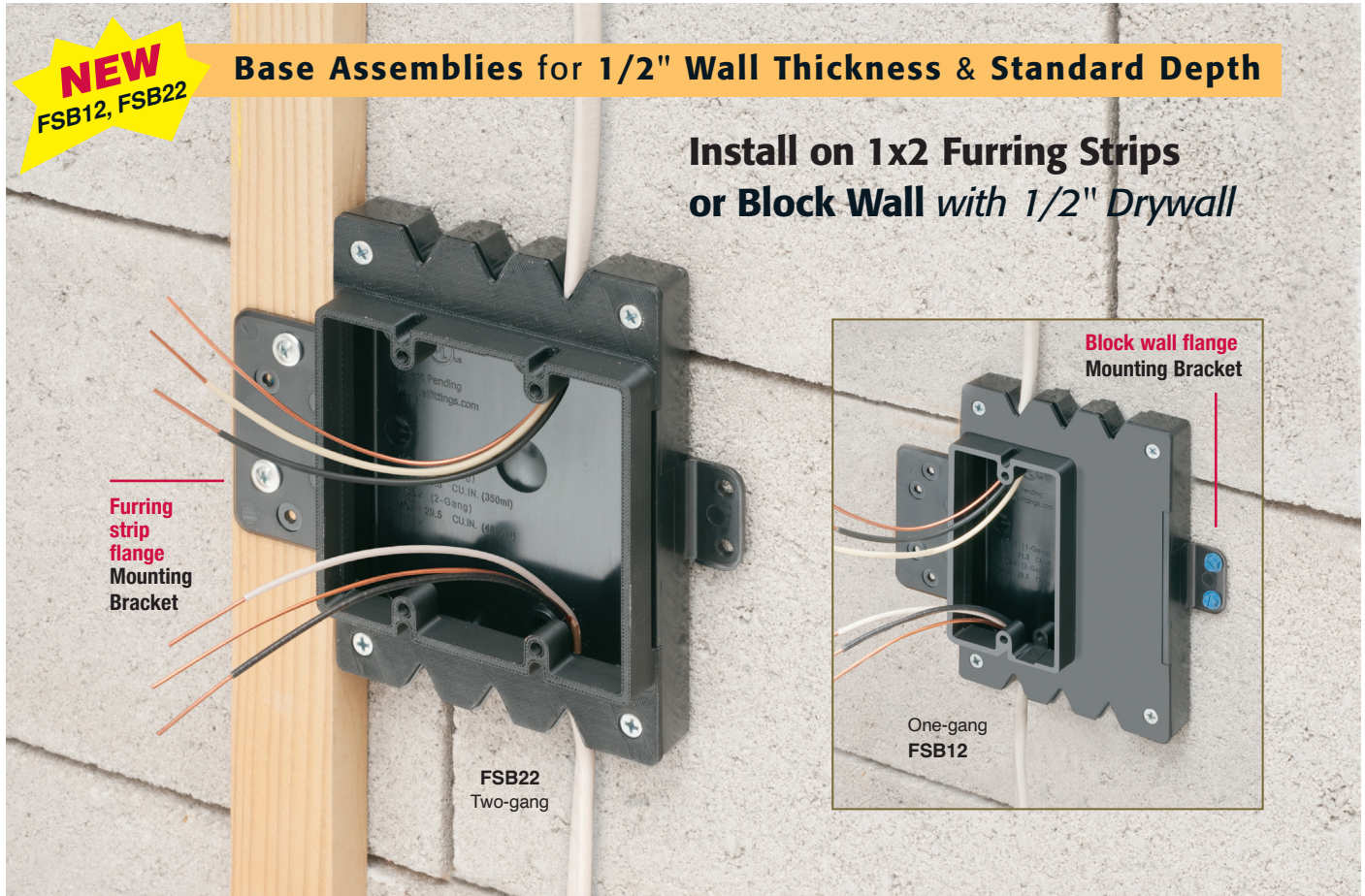
FSB2 Kit

Covers included in kits -
also sold separately

2024 **NECA**
**Show
Stopper**
★ ★ ★ ★ ★

¹ Based on \$60/hour fully burdened labor rate

Add our Box Extenders to Broaden Application



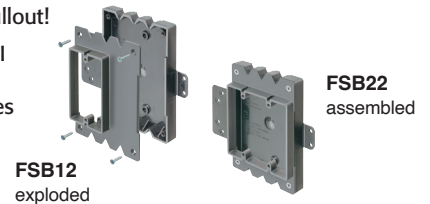
Our **NEW Low Profile** single and two-gang **Furred Wall Box™** base assemblies have a **1/2" raised ring** for use with standard wall plates.

They combine with Arlington's Box Extenders to deliver **installation solutions for wall thicknesses** from 1/2" to 1-1/2" and **varying device depths**.



PATENT PENDING

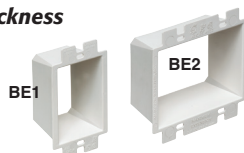
- Integral cable securement – No pullout!
- Accommodates standard and GFCI devices in varying depths – Uses standard decorator-style wall plates
- Single gang **FSB12** - 17.0 cu. in.
Two-gang **FSB22** - 20.5 cu. in.



Add our **BOX EXTENDERS** for these specific conditions...

- 1** if **Total Wall Layer Thickness** is **GREATER than 1/2"** (up to 1-1/2")

Add **BE1** or **BE2**



Example:
3/4" thick layer
(1/2" wallboard
and 1/4" tile)

- 2** if Using a **Deep Depth Device** with **1/2" Wall Thickness**
Add **BES1** or **BES2**



(1/2" wallboard
w/ GFCI, USB or
Dimmer)

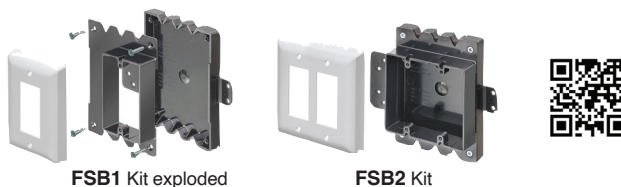


Arlington®

Large Volume Furred Wall Box Kits include box & cover

CATALOG NUMBER	UPC/DEI/NAED MFG. #018997	DESCRIPTION FURRED WALL BOX KITS	UNIT/STD PKG
FSB1	99321	21.3 cu. in. Single gang box kit w/ cover	1/10
FSB2	99322	29.5 cu. in. Two-gang box kit w/ cover	1/10
FSB1C	99323	Single gang cover	1/10
FSB2C	99324	Two-gang cover	1/10

Single gang box kit includes (2) white painted screws.
Two-gang box kit includes (4) white painted screws.



FSB1 Kit exploded

FSB2 Kit

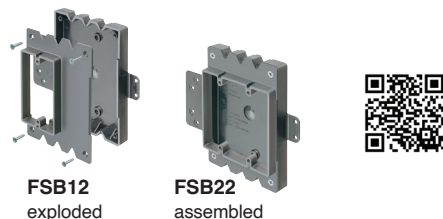
Covers also sold separately



Low Profile Furred Wall Box with 1/2" Raised Ring
Use with your own cover

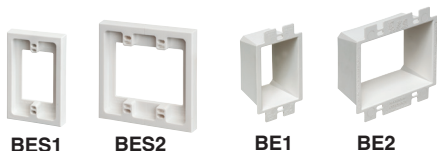
CATALOG NUMBER	UPC/DEI/NAED MFG. #018997	DESCRIPTION WALL BOX - BOX EXTENDERS	UNIT/STD PKG
FSB12	99361	Single gang Furred Wall Box assembly	1/10
FSB22	99362	Two-gang Furred Wall Box assembly	1/10
BES1	48976	Single gang surface box extender	1/10
BES2	48977	Two-gang surface box extender	1/10
BE1	40160	Single gang box extender	25/25
BE2	48960	Two-gang box extender	25/25

FSB12 and FSB22 kits include (4) screws each



FSB12 exploded

FSB22 assembled



BES1

BES2

BE1

BE2



Arlington®

1 Stauffer Industrial Park
Scranton, PA 18517
800/233.4717
Fax 570/562.0646
www.aifittings.com

30 vs 15 MINUTES
MINUTES

Conventional 'OLD STYLE' Installation Steps

1
Break out CMU block where possible to fit box. Grinder cut. Drill, chisel/hammer to create opening.



8
MINUTES

2
Install furring strip. Mount box.



7
MINUTES

3
Install cable and pigtail wiring as applicable.



5
MINUTES

4
Add foam to insulate and seal the opening.



5
MINUTES

5
Install device. Install finish trim plate.

5
MINUTES

FURRED WALL BOX Fewer Steps • Easy Installation

1 a
Install box on existing drywall furring strip for approximate placement

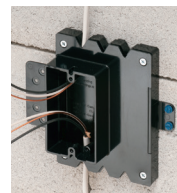


OR
1 b
Install box on block wall for exact placement



5
MINUTES

2
Install cable and pigtail wiring as applicable.



5
MINUTES

4
Install device. Install finish trim plate.

5
MINUTES

ELIMINATES...

- **BREAKING OUT BLOCK**
- **FOAMING AROUND HOLE**

Distributed by



PATENT PENDING

Furred Wall Box series

0325/15M