



## Electronic Access & Data - EAD





# Table of Contents



**08** Electronic cylinders



**10** Electronic door locks



**14** Card readers & peripherals



**14** Compact and remote readers – an overview



**19** Registration units – an overview



**30** Access Media and Badges



**30** Media – an overview



**34** Access control solutions



**36** Access control solutions for Corporate



**39** Access control solutions for SAP



**41** Access control solutions for small and medium-sized enterprises



**43** Access control solutions for small businesses and residential



**44** Time & Attendance



**48** Shop floor data collection



**49** Solutions for ERP systems



**50** Interfacing solutions for third-party applications



**51** Technology and function principles



# Electronic Access & Data

Stay informed of day-to-day operations: who, what, where and when.



Employees' time is a production factor. Access control and time recording, need a smart master plan to track and to evaluate them efficiently. Integrated electronics and a digital network connection give both smaller and larger companies, and private households, new options. To-the-second management of access rights from the underground garage to the topmost floor is comprehensive and secure, down to the last detail. Even the device design adopts a holistic approach: The card readers fit exactly to the cylinders and fittings, every user interface is clear, compact and consistently functional.



## Electronic cylinders

State-of-the-art stand-alone cylinders can be instantly reprogrammed.



## Electronic door locks

Keyless access with transponder, RFID card or app. Integrated door fitting design.



## Card readers & peripherals

Efficient readers and access control units at every indoor and outdoor access point.



### Access Media and Badges

Control access digitally with a smart key, access card, transponder or smartphone app.



### Access control solutions for Corporate

Modules that can be precisely configured for efficient coordination and increased security.



### Access control solutions for SAP

Access management and time recording for optimized processes thanks to dormakaba and SAP.



### Access control solutions for small and medium-sized enterprises

Comprehensive access management that's affordable for companies of all sizes.



### Access control solutions for Microenterprises and Residential

Control all access rights via smartphone and functional app.



### Time & Attendance

Intuitive operating elements for time recording, access control and employee communication.



### Shop floor data collection

Intelligent management of machine scheduling, inventory, quality and maintenance data.



### Solutions for ERP systems

Simple integration, recording and evaluation of the dormakaba terminals in your ERP system.



### Interfacing solutions for third-party applications

Simple integration, recording and evaluation of the dormakaba terminals in your ERP system.



### Technology and function principles

Security concepts based on RFID, biometrics or smartphone apps.

# Electronic cylinders

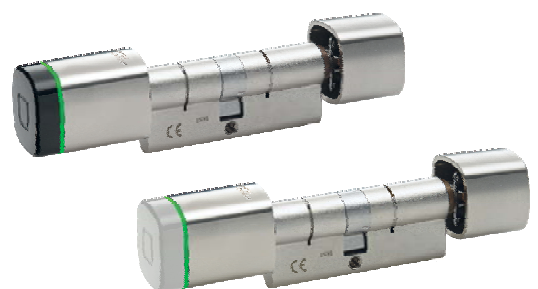
## dormakaba digital cylinder

The locks with both visual and acoustic signals enable access to be controlled precisely in terms of time and space. The modular design with removable knobs means extremely easy mounting. In addition to the standard version, the portfolio also includes dual, half and anti-panic cylinders.



### Simply effective:

- Can be used for any door in interior or weather-protected exterior areas
- The electronics function reliably, even at extreme temperatures
- Suitable for fire protection doors
- Increased drill protection for better security
- Available in Euro profile 17 mm, Swiss profile, oval profile, ANSI
- With black or white face
- Cylinder surface in stainless steel look, polished brass, matt chrome or black
- Modular design – length can be adjusted on site
- Supports the mobile access function – users receive access rights on their smartphone via the dormakaba app





## Mechatronic cylinder

The locking system, which connects a mechanical cylinder with an electronic access control system, integrates seamlessly into existing mechanical locking systems. It is ideal for use on exterior doors, for example. The smart key with an RFID chip can open both mechanical doors and doors equipped with mechatronic cylinders.



### Simply effective:

- Flexible access system: complete or partial switch from mechanics to electronics possible
- Unique range: a wide and dynamic spectrum of award-winning access components
- Available in several profile variants such as Euro profile, Swiss profile and Scandinavian oval profile
- Plastic cover available in black and white
- Wireless solution connects the mechatronic cylinder with the access solution remotely and enables programming to be conveniently carried out from your desk



# Electronic door locks

## dormakaba c-lever pro



Electronic fitting solutions for demand-driven access control on external doors or doors with increased security requirements. Simple, flexible control of access rights in stand-alone, remote or online mode. High-quality materials meet the highest standards in durability, weather-proofing and security.



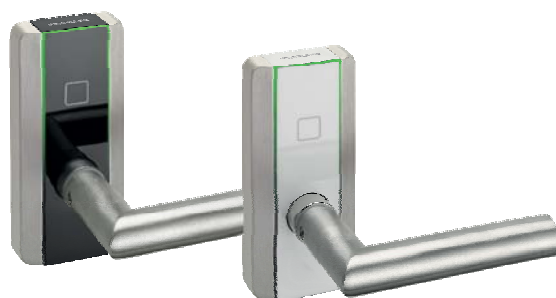
### Simply effective:

- For interior or weather-protected exterior areas
- Can be mounted directly on wooden, plastic or metal doors
- Solutions for protection against burglary and fire, as well as emergency and escape routes
- Various modes of operation: Stand-alone (incl. CardLink and Access-on-Card), wireless with door monitoring, battery and/or external power supply, NFC, Bluetooth®, mobile access
- Access with card, key fob, key with RFID or smartphone
- Supports mobile access – users receive access rights on their smartphone via the dormakaba app
- TouchGo function: hands-free, the transponder stays in your bag
- Suitable for the side facing away from the emergency escape route in accordance with the requirements of standard DIN EN 179, when using certified device combinations

## dormakaba c-lever compact



Electronic fitting solutions for use in office, administrative or retail areas. Access rights can be easily and flexibly controlled – either in stand-alone or wireless mode. On presentation of a valid means of access, the green signal appears in the digital lighting unit and the door can be opened as usual with the door handle.



### Simply effective:

- Whatever the lock and fitting
- Simple, wireless mounting – even in an inverted position
- Various modes of operation: Stand-alone (incl. CardLink and Access-on-Card), wireless, NFC, Bluetooth®, mobile access
- Consistently compatible and award-winning products with unique component diversity such as readers, digital and mechatronic cylinders
- Supports the mobile access function– the door can be opened with a smartphone
- Suitable for the side facing away from the emergency escape route in accordance with the requirements of standard DIN EN 179, when using certified device combinations
- Ideal for retrofitting projects, no wiring required thanks to the use of batteries integrated in the door handle

# Electronic door locks

## dormakaba c-lever air

Electronic fitting that is as flat as a normal door fitting. The technology is not in the fitting itself, but in the handle. The c-lever air meets strenuous aesthetic and functional demands. Its streamlined design has already won several design awards. The c-lever air fitting can be integrated into all dormakaba solutions and supports the latest RFID technologies.



### Simply effective:

- Flattest electronic fitting
- For interior doors, for example in design-oriented architecture, in modern offices or in museums and galleries
- Ideal for retrofitting projects, no wiring required thanks to the use of batteries integrated in the door handle
- Various modes of operation: Stand-alone (incl. CardLink and Access-on-Card), wireless, NFC, Bluetooth®, mobile access
- Suitable for the side facing away from the emergency escape route in accordance with the requirements of standard DIN EN 179, when using certified device combinations
- Supports the mobile access function– the door can be opened with a smartphone

# dormakaba cabinet lock 21 10

Electronic lock solutions for wardrobes, lockers or furniture. Secure access to important documents, valuables or materials using electronic access control. On presentation of a valid means of access at the cabinet, the door opens automatically.

## Simply effective:

- Lock is mounted inside the cabinet – no operating element disrupts the design of the furniture door
- Easy to integrate – seamless integration into the system environment with digital cylinders, electronic fittings, readers and mechatronic cylinders
- Easy to program – for permanent or temporary access
- Long-life battery – up to five years of operation
- Alarm in the event of attempted break-in
- Streamlined design – suitable for most office furniture and drawers
- Many areas of application: Wardrobe or material cupboards, depot and mailboxes, office furniture, medications and patient cabinets



# Card readers & peripherals

## Compact and remote readers – an overview



	Compact readers			Remote readers	
Readers	91 04	91 10	91 12	91 15	91 25
MRD (multi-RFID device)	●	●	●	●	●
Mobile access (NFC)	●	●	●	●	●
Mobile access (Bluetooth®)	●		●		
<b>Interfaces</b>					
RS485	●	●	●	●	●
Coaxial connector for registrationunit				1	2
<b>Digital I/Os</b>					
Number of inputs	2	2	2	2	4
Number of relay outputs	1	1	1	1	3
Input for tamper contact			1		1
<b>Power supply</b>					
10–34 V DC	●	●	●	●	●
<b>Construction/mounting</b>					
Surface-mounted cable routing	●	●	●		
Flush-mounted cable routing	●	●	●		
Rail mounting				●	●
<b>IP protection class</b>					
	IP 54/IP 66	IP 40/IP 54	IP 66	IP 20	IP 20
<b>Certifications</b>					
CE	●	●	●	●	●
FCC	●	●	●	●	●
UL 60950	●	●	●	●	●
UL294	●	●	●		

● Standard

## Compact readers

### dormakaba compact reader 91 04

The streamlined compact reader blends harmoniously into any building. Hold either card, key fob or key with RFID against the reader and enter – the reader signals the release visually and acoustically. The slim design enables direct installation on metal, wood and plastic door frames.



#### Simply effective:

- For door frame mounting as coordination reader or as an access reader in conjunction with an access control unit in the protected area
- Waterproof and weatherproof
- Supported RFID technologies: LEGIC prime/advant or MIFARE Classic/DESFire
- Functions in online, mobile access, CardLink, Access-on-Card, wireless or stand-alone mode
- Available with integrated Bluetooth® for mobile access
- Quick and easy installation with Quickwire technology
- Contemporary, streamlined, robust design
- Available in black or white



# Card readers & peripherals

## Compact readers

### dormakaba compact reader 91 10

The compact readers can be used in any access solution. Always online, the readers, together with a control unit, ensure a high level of security. They are particularly suitable for access within an organization. Users use their RFID card for contactless identification on the compact reader. This checks and interprets the recorded data and then decides whether to grant access.



#### Simply effective:

- For wall mounting
- Central light symbol and acoustic symbol inform the visitor whether access has been granted or not
- Supports the RFID-Standards LEGIC prime and advant as well as MIFARE Classic and DESFire
- Quick and easy installation with Quickwire technology
- Contemporary, award-winning high-gloss design
- Available in black or white

### dormakaba compact reader 91 12

The compact reader 91 12 is suitable for entrances at which a PIN verification is also required for security purposes.

#### Simply effective:

- For wall mounting
- Central light symbol and acoustic symbol inform the visitor whether access has been granted or not
- Supports the RFID standards LEGIC prime and advant as well as MIFARE Classic and DESFire
- Quick and easy installation with Quickwire technology
- Contemporary, award-winning high-gloss design
- Available in black or white





# Remote readers

## dormakaba remote reader 91 15



The reader 91 15 is designed for simple entrances and offers the advantage of a separate registration unit and door control. This makes it suitable for installations in protected interior areas for controlling an entrance that is in an unprotected exterior area.

### Simply effective:

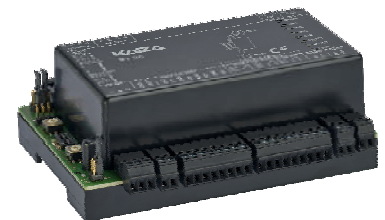
- Tamper-proof – installation in the protected interior area
- Complete design freedom, thanks to a choice of registration units
- Functions in dormakaba online, CardLink, Access-on-Card or stand-alone mode
- Can be upgraded, as can be combined with different dormakaba access systems
- Use: External doors and gates, automatic doors, elevators, garage doors, parking barriers, entrance areas, motor locks

## dormakaba remote reader 91 25

The 91 25 reader is an effective access control system and is suitable for challenging entrances at which a high level of security is required. It monitors various kinds of entrances.

### Simply effective:

- Variety of functions – extensive door controls possible (on/off configuration)
- Flexible and upgradeable – number of inputs and outputs can be increased by using dormakaba add-on modules 90 30 and 90 31
- Tamper-proof – installation of the remote reader in the secure interior area
- Turnstiles, security interlocks, external doors and gates, automatic doors, elevators, parking barriers, entrance areas, motor locks



# Card readers & peripherals

## Biometric readers

### dormakaba biometric reader 91 50

The dormakaba biometric reader 91 50 guarantees clear, legally compliant and convenient access control. It combines the proven identification methods of RFID and fingerprint with a convenient touch keypad. The reader and its high-quality biometric sensor can be used for both biometric identification and verification.



#### Simply effective:

- Unambiguous identification of people
- Biometric characteristics cannot be forgotten, lost, stolen or passed on to third parties
- No "clocking in for your colleagues"
- Legal certainty – who registered when and where?
- Data protection fully guaranteed thanks to fingerprints that cannot be reconstructed



# Registration units – an overview



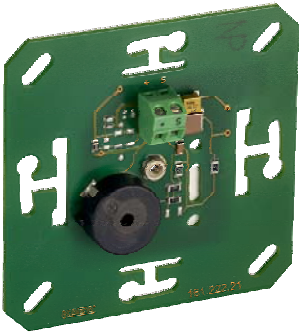
Registration units					
Readers	90 00	90 01	90 02	90 03	90 04
PIN pad			●		
<b>Interfaces</b>					
Coaxial connector	●	●	●	●	●
<b>Construction/mounting</b>					
Surface-mounted cable routing		●	●		●
Flush-mounted cable routing	●	●	●	●	●
Door frame mounting				●	●
<b>IP protection class</b>					
	IP 20	IP 40/IP 54	IP 40/IP 54	IP 40/IP 54	IP 66
<b>Certifications</b>					
CE	●	●	●	●	●
FCC	●	●	●	●	●
UL 60950	●	●	●	●	●

● Standard

# Card readers & peripherals

## Registration units

### dormakaba registration unit 90 00



The unit can be installed in individual or on-site housings. The components are compatible with many European switch covers (e.g. Jung, Gira, Merten, Feller). For Siedle, we offer individual mounting options.

#### Simply effective:

- Together with dormakaba control units and remote readers, the unit forms a secure access solution with convenient user identification
- Various options for the appearance (housing that comes with the design or housing provided on site) as well as for the read/write properties
- Can be mounted indoors and outdoors

### dormakaba registration unit 90 01



Together with the control units and remote readers, the unit secures and controls access to buildings and rooms and is mounted separately from the control unit.

#### Simply effective:

- Encrypted communication
- Central light symbol and acoustic symbol inform the visitor whether access has been granted or not
- Supports the RFID standards LEGIC prime and advant as well as MIFARE Classic and DESFire
- Contemporary, award-winning high-gloss design
- Scratch-resistant glass finish
- Available in black or white



## dormakaba registration unit 90 02

The dormakaba registration unit 90 02 with wear-resistant PIN pad for entrances with increased security requirements can be used in interior areas or protected exterior areas. PIN pad operation is supported by the "Guide by Light" function.

### Simply effective:

- Secure access solution with PIN pad
- Integrated tamper contact
- Functions in online, mobile access, CardLink and Access-on-Card mode
- Suitable for retrofitting, existing wiring can be used
- Award-winning design, elegant, with scratch-resistant glass surface



# Card readers & peripherals

## Registration units

### dormakaba registration unit 90 03



The registration unit 90 03 is slim, small and suitable for direct mounting on door frames and most fittings.

**Simply effective:**

- Extremely compact dimensions for mounting on door profiles or fittings
- Supports RFID standards LEGIC and MIFARE
- Surface mounting even in a metallic environment

### dormakaba registration unit 90 04

The dormakaba registration unit 90 04 is characterized by its slim, compact form. It can be mounted directly on metal, wood or plastic door frames. Waterproof and weather-resistant, the device is also suitable for outdoor areas.

**Simply effective:**

- Suitable for the smallest of spaces, integrates directly into door frames
- Waterproof and weatherproof
- Easy to mount – cable can easily be laid in the door frame; the cable outlet is potted
- Award-winning design, elegant, with scratch-resistant glass surface



# Wireless Gateway

## dormakaba Wireless Gateway 90 40

The Wireless Gateway 90 40 connects the wireless door components with the access system. It transmits new access rights to the doors remotely. The data is secured by state-of-the-art encryption technology. Non-wired door components are therefore seamlessly connected to the access system.

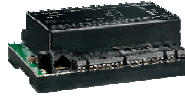


### Simply effective:

- Highly secure – remote communication is encrypted with AES
- Convenient programming from your desk – door and status information are automatically displayed
- Easy to install – thanks to PoE (Power-over-Ethernet), the Gateway does not require any additional power supply
- Upgradeable – the range between the Gateway and door components can be increased by a wireless extender

# Card readers & peripherals

## Access manager – an overview



Readers	Access manager		
	92 00	92 30	92 90
Integrated readers based on multi-RFID device	2	2	
Total number of possible readers per accessmanager	8	2	16
Mobile access (NFC)	●	●	
<b>Interfaces</b>			
RS485 Partyline	●	●	●
RS232 for peripheral components	2	1	1
Coaxial connector for registration units	2	2	
<b>Digital I/Os</b>			
Number of inputs (monitored)	4 (4)	4 (4) + tamper contact	18 (16) + tamper contact
Number of relay outputs	3	3	16
<b>Hardware options</b>			
Can be upgraded with I/O modules	●		
Passive RS485 interface	●	●	●
Active RS485 interface			●
<b>Software options</b>			
Storage option 2,000/8,000	●	●	●
Storage option 10,000/40,000	●	●	●
Storage option 50,000/100,000	●	●	●
AVISO	●	●	●
CardLink	●	●	●
Data encryption	●	●	●
Number of readers	2/4/8	2	2/4/8/16
<b>Power supply</b>			
PoE		●	
110/230 V AC			●
12/24 V DC	● (12/24 V)	● (24 V)	● (24 V)
<b>Construction/mounting</b>			
	Rail mounting	Surface-mounted housing for indoor installation	Wall housing, rack housing (19")
<b>Certifications</b>			
UL 294 approval	●	●	●
CE	●	●	●
FCC	●	●	●
UL 60950	●	●	●

● Standard



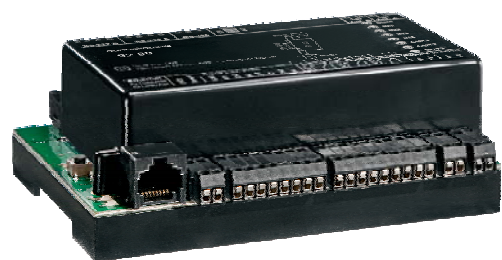


## dormakaba access manager 92 00

With its flexible, upgradeable construction, the dormakaba access manager 92 00 offers extensive installation options. It can be installed as an individual device near an entrance, in electric cabinets or centrally with add-on input/output modules. Depending on the system solution, it can manage and control up to twelve doors.

### Simply effective:

- Autonomous thanks to its own decision-making logic and local data storage
- Flexible use – for access control, door monitoring as well as for the activation of alarm systems
- Easy integration into existing units
- Easy to configure – commissioning and configuration via web interface



# Card readers & peripherals

## Access manager

### dormakaba access manager 92 30

The dormakaba access manager 92 30 is ideal for single entrances. Quick and easy mounting on any door reduces installation time and costs. Power can be supplied exclusively via PoE, removing the need for other power sources.

#### Simply effective:

- Minimum wiring work, use of state-of-the-art IT infrastructures
- Efficient installation – easy and fast to carry out without an electrician
- Extensive door controls – supports all common door configurations
- Easy integration into existing units
- Autonomous thanks to its own decision-making logic and local data storage



## dormakaba access manager 92 90



A central, effective control unit for complex access control units. The access manager is available as a wall or IT rack version. It is particularly suited to buildings that already have a central wiring infrastructure.

#### Simply effective:

- Central access control for multiple access points and complex tasks
- Robust wall or rack housing, clear connection concept, connection of up to 16 readers
- Consideration of individual customer requirements (AVISO) and flexible upgrade options
- Quick commissioning and easy configuration via Internet browser

# CardLink Update Terminal

## dormakaba Terminal 96 05



The dormakaba Terminal 96 05 is a versatile access terminal. The 4" touchscreen not only supports users during operation, but can also display company news or personal information. Thanks to its compact design and simple installation concept, the terminal integrates very easily into modern architectural structures.

### Simply effective:

- Supports most RFID readers
- Dustproof and waterproof in accordance with protection class IP 65
- Solid housing and robust glass front (option)
- Freely configurable user interface (e.g. using your own company's corporate design)
- Integration of company-relevant apps
- Network integration and power supply via Power-over-Ethernet (PoE)

# Card readers & peripherals

## Peripherals

### dormakaba desktop reader 91 08



The dormakaba desktop reader 91 08 reads and writes RFID media in the form of cards, smart keys or key fobs that are used for time recording or access control. The desktop reader is connected to a PC via its USB port. The device is automatically detected and installed by Windows.

#### Simply effective:

- Easy reading and writing of RFID media in accordance with ISO-15693 and ISO-14443A standards
- Equally suitable for cards, smart keys or key fobs
- Unambiguous identification of people
- Transfer of the security key to the system or to the peripheral components

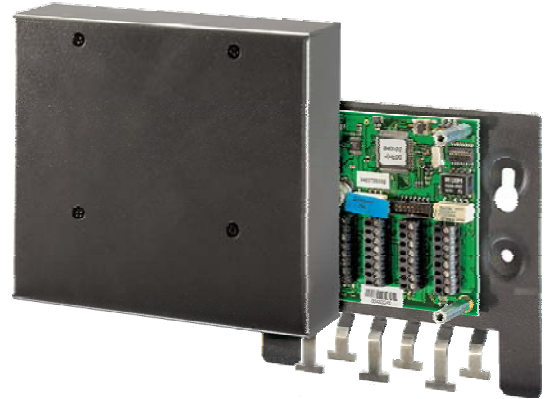


## dormakaba Interface 90 10

The dormakaba Interface 90 10 can be connected to the access control unit. Up to two readers with Wiegand interfaces can be connected to a dormakaba access control system. Additional functions such as several digital inputs and relays, for door monitoring and control, for example, are available as standard.

### Simply effective:

- Enables the easy integration of third-party hardware into a dormakaba access control system
- Connection of up to two readers, e.g. Wiegand readers, magneticstripe readers
- Door monitoring and control as an additional function



## dormakaba extension modules 90 30 and 90 31

The extension modules 90 30 and 90 31 are used if more digital inputs or relay outputs are needed on the control unit than are available, e.g. for an elevator control unit or for window monitoring. They are mounted by simply plugging them into the control unit. Thanks to its monitored inputs, the 90 31 module offers increased security.

### Simply effective:

- Can be used with various control units
- Increased security
- Thanks to monitored inputs (90 31) tamper alarms can be generated
- Easy installation
- Thanks to pluggable modules, the number of I/Os can easily be increased

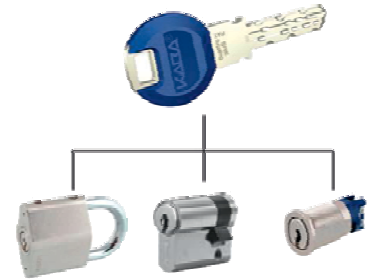


# Access Media and Badges

## Media – an overview



	Access card	Key fobs	smart key
Multi-application/technology	<ul style="list-style-type: none"> <li>• RFID chip</li> </ul>	<ul style="list-style-type: none"> <li>• RFID chip</li> </ul>	<ul style="list-style-type: none"> <li>• RFID chip</li> </ul>
Main applications	<ul style="list-style-type: none"> <li>• Access</li> <li>• Shop floor data collection and time recording</li> <li>• Payment</li> <li>• Follow-me printing and copying</li> </ul>	<ul style="list-style-type: none"> <li>• Access</li> <li>• Shop floor data collection and time recording</li> <li>• Payment</li> <li>• Follow-me printing and copying</li> </ul>	<ul style="list-style-type: none"> <li>• Access</li> <li>• Shop floor data collection and time recording</li> <li>• Payment</li> <li>• Follow-me printing and copying</li> </ul>
Unique selling point	<ul style="list-style-type: none"> <li>• Extensive printing options</li> </ul>	<ul style="list-style-type: none"> <li>• Solid and robust</li> </ul>	<ul style="list-style-type: none"> <li>• Checks electronic authorization plus mechanical permutation (EU cylinder)</li> <li>• Color clips for better visibility</li> </ul>
Security	<ul style="list-style-type: none"> <li>• Additional combination with PIN code or biometrics possible</li> </ul>	<ul style="list-style-type: none"> <li>• Additional combination with PIN code or biometrics possible</li> </ul>	<ul style="list-style-type: none"> <li>• Additional combination with PIN code or biometrics possible</li> <li>• A mechatronic door can only be opened with the smart key if the RFID chip and key are both authorized at the same time</li> </ul>
In the event of loss	<ul style="list-style-type: none"> <li>• Rights can be revoked electronically (meaning no security flaws)</li> </ul>	<ul style="list-style-type: none"> <li>• Rights can be revoked electronically (meaning no security flaws)</li> </ul>	<ul style="list-style-type: none"> <li>• Rights can be revoked electronically (meaning no security flaws)</li> </ul>



<b>TouchGo transponder</b>	<b>Smartphone (mobile access)</b>	<b>Mechanical key</b>
<ul style="list-style-type: none"> <li>• RFID chip</li> <li>• Resistive Capacitive Identification</li> </ul>	<ul style="list-style-type: none"> <li>• Via other apps</li> <li>• Near Field Communication</li> <li>• Bluetooth</li> </ul>	<ul style="list-style-type: none"> <li>• Permutation</li> </ul>
<ul style="list-style-type: none"> <li>• Mainly in establishments in which access must function quickly and smoothly and be regulated at the same time, such as senior citizens' and nursing homes and hospitals.</li> </ul>	<ul style="list-style-type: none"> <li>• Access</li> <li>• Shop floor data collection and time recording</li> <li>• Payment</li> </ul> <p>Other possible applications:</p> <ul style="list-style-type: none"> <li>• After closing time</li> <li>• For nightly maintenance</li> <li>• Temporary access rights</li> </ul>	<ul style="list-style-type: none"> <li>• Simple to hierarchical locking systems</li> <li>• Escape route</li> </ul>
<ul style="list-style-type: none"> <li>• Must only be carried, but does not have to be used</li> <li>• Combination of RFID and RCID</li> </ul>	<ul style="list-style-type: none"> <li>• No media transfer</li> <li>• Mobile access can be integrated into a company app</li> </ul>	<ul style="list-style-type: none"> <li>• Can be combined with many other items within a dormakaba locking plan</li> <li>• Pioneering planning method KeyLink</li> </ul>
<ul style="list-style-type: none"> <li>• Additional combination with PIN code or biometrics possible</li> </ul>	<ul style="list-style-type: none"> <li>• Additional protection in the form of PIN code or fingerprint</li> </ul>	<ul style="list-style-type: none"> <li>• Patented security system</li> <li>• Copy protection</li> </ul>
<ul style="list-style-type: none"> <li>• Rights can be revoked electronically (meaning no security flaws)</li> </ul>	<ul style="list-style-type: none"> <li>• Rights can be revoked electronically (meaning no security flaws)</li> </ul>	<ul style="list-style-type: none"> <li>• In the event of loss, cylinders must be replaced</li> </ul>

# Access Media and Badges

## Smart key



Time recording, electronic or mechanical access control – the Kaba smart key is the key that connects everything. The additional electronic identification makes mechanical locking systems more secure and badges superfluous. Its small dimensions means it fits in every pocket.

- Less administration thanks to the management of one medium
- Can be integrated into all dormakaba systems – mechanics, mechatronics or electronics
- Existing key clips can be easily upgraded or retrofitted
- Individual identification of the key clips with color markings that are easy to change

## Access cards



RFID identification medium with programmable time and room authorizations in a flat, lightweight shape.



## Key fobs

The RFID key fobs are available in different shapes and colors. Practical and easily recognizable on the key ring.



## TouchGo media

Practical TouchGo transponder in the form of a key fob: It is carried in your trouser pocket or handbag, and allows you to open the door without having to take out the transponder. Available in black and white, also as a card holder or armband.



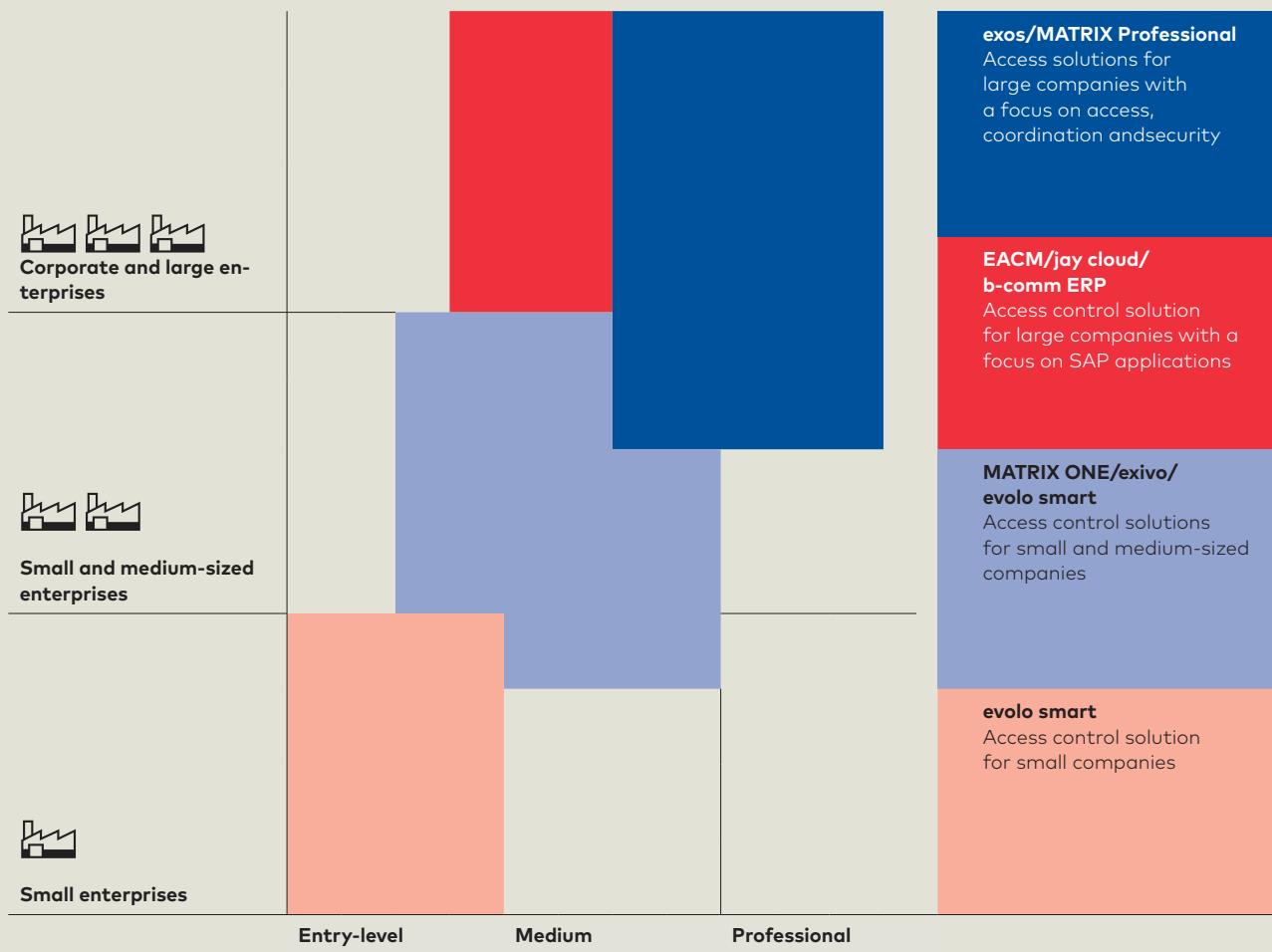
## Smartphone (mobile access)

Thanks to mobile access, the smartphone becomes an access medium. Access can be time-limited or not.

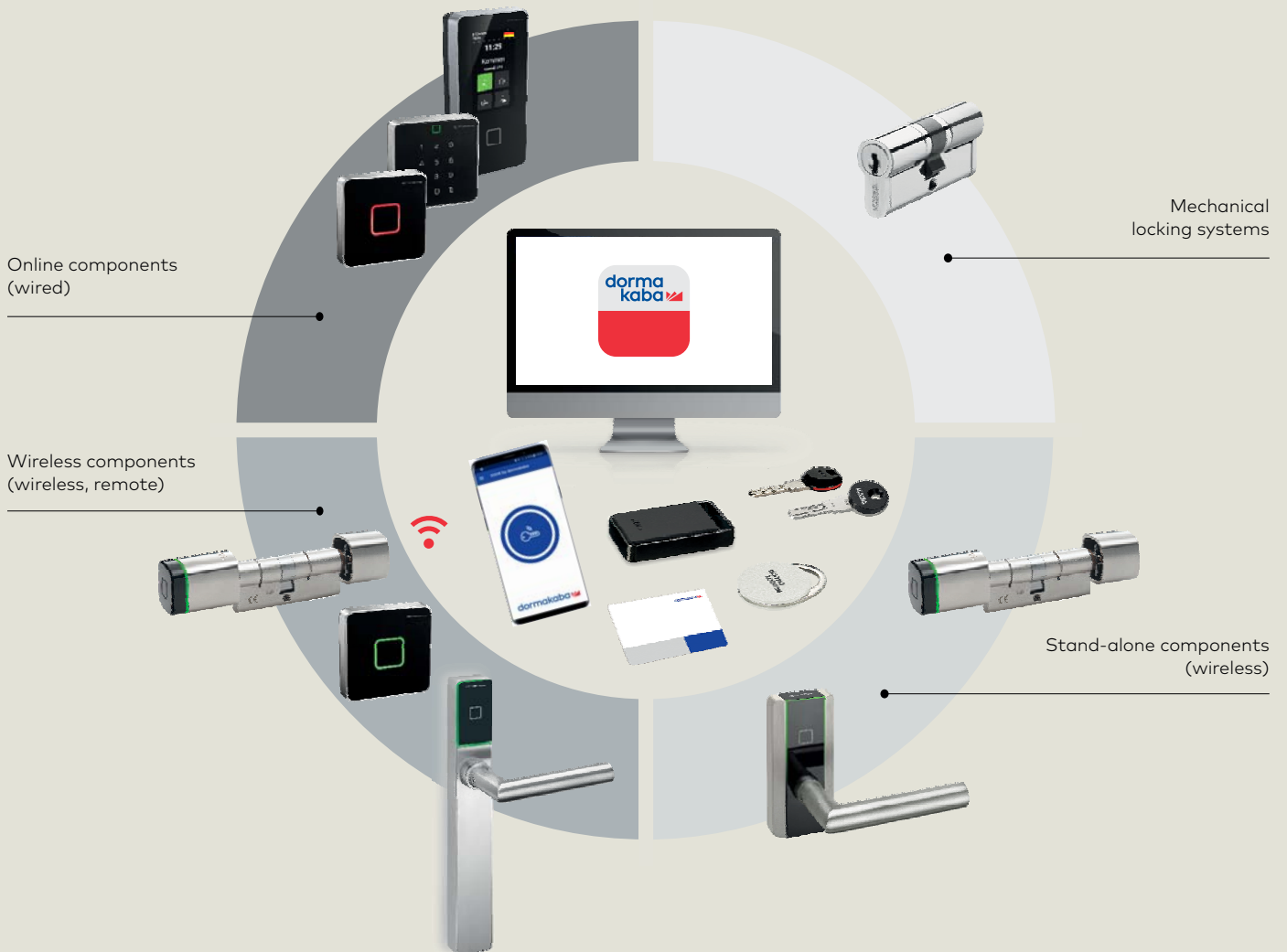


# Access control solutions

Our access control solutions for different sizes of companies offer more security, streamlined management processes and increased transparency in building management. They are modular in design and can be upgraded as required.



A holistic access control system comprises different hardware and software components and is adapted to your needs.



The effectively available functional scope of the system is dependent on the system context in which it is used. The figure shows an example of a system configuration.

# Access control solutions for Corporate

## dormakaba exos 9300



dormakaba exos 9300 is a comprehensive modular access management system. The solution coordinates all access rights flexibly and across locations. From simple door control and wirelessly integrated door components to complex interlock control with monitoring. Mechanical doors and locking systems can also be integrated into a holistic solution at any time.

### Simply effective:

- Uniform processes and efficient procedures through integration and management of all mechanical, mechatronic and electronic access points in one system
- Extremely flexible because you can use your existing media, access readers and door components
- Integration and connection of intrusion, alarm and video systems
- Reduction of infrastructure and personnel costs thanks to the system's seamless integration into your own IT system and connection to ERP systems
- Easy to expand thanks to the modular, scalable system configuration

**Rights management module**

Web-based, organization-specific allocation of access rights in accordance with security requirements. Employees, outside companies or suppliers are granted access depending on assignments, projects or contracts. Rights can be planned in advance, to create flexibility and reduce administration costs.

**Visitor module**

Web-based registration, coordination and monitoring of all visitors. The visitor procedure can be individually configured. Operation is intuitive and is made easier by devices such as a pass and visitor card reader, for example. Short waiting times for the issue and return of ID cards contribute to a professional visitor flow.

**Locking system management module**

Integration of badges, and mechanical keys, in a single system. This enables an overview and control of who has received a key or badge and where it can be used to gain access.

**Outside companies module**

Web-based linking of outside company employee access rights in projects. In the event of changes to appointment times, the person responsible can change the access rights of all outside company employees involved with the click of a mouse. This automatically ensures that no external persons retain access after completion of a project.

**Badge and media module**

Easy programming of access badges as well as quick management of lost, replaced and transferred cards with a single click.

**Client module**

Independent coordination of individual locations, floors or office groups. Several tenants are able to independently manage their access rights in a central system and therefore maintain full data sovereignty.

**Parking space management module**

Coordination and management of parking spaces. Users are assigned individual, time-limited parking spaces, so that every parking space is used optimally. The module only grants access to authorized vehicles, and at particular times if required. Unauthorized parking is prevented.

**Key deposit module**

Management of the issuing of mechanical keys at any time of the day or night. The system automatically records all key pick-ups and returns in real time. This results in verifiable documentation with the complete history, which can be tracked at any time.

**Access module**

Central or local coordination of employee, supplier and visitor access. These groups obtain their access rights according to their tasks, projects or contracts. For example, basic authorizations can be granted on entry. Rights for specific departments or locations can be granted at a later stage by the relevant responsible persons. Employees receive role-based rights depending on their function and areas of responsibility.

# Access control solutions for Corporate

## MATRIX Professional



A modular access control system for access control, time recording and time management with the option of integrating emergency escape route management. The system can be scaled to almost every security requirement and size of application, and just as easily used for a simple door control via a locking plan as for the mapping of complex security situations, for example with elevator control, interlock management or high-security conditions.

### Simply effective:

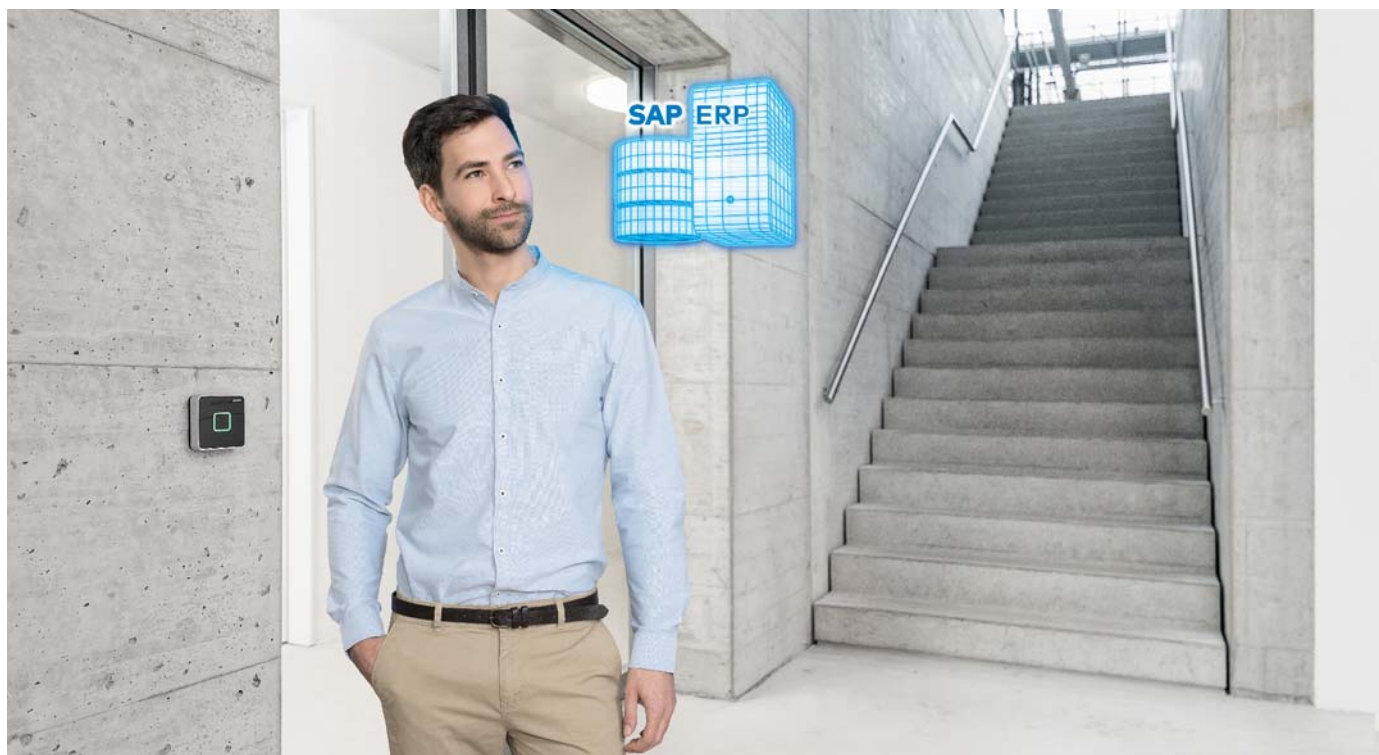
- Manages up to 300,000 badges/people
- Ergonomic, browser-based user interface
- Perfectly aligned with customer requirements
- Configurable interfaces with superordinate systems

### MATRIX Professional options

Thanks to its modular design and option management, MATRIX Professional can be precisely tailored to individual needs. License management also allows for subsequent upgrades, such as client management for data and peripherals, TMS interfacing for emergency escape route management, integration manager for interfacing with external systems, visitor and outside company management and mobile access.

# Access control solutions for SAP

dormakaba EACM



Coordination of access, time recording and media management in the SAP system. Whether for access to the premises, access to buildings or security-critical areas, time recording, media management or additional solutions for shop floor data collection as well as visitor and outside company management: With dormakaba EACM, you can administer and control everything conveniently via SAP in a central system.

## Simply effective:

### Entry control

- Definition of room zones and access profiles
- Increased security thanks to monitoring and transparent documentation of all movements in security-critical areas

### Personnel management

- Easy central and local rights allocation
- Overview of all rights and processes

### Device management

- Overview of installed access components and time recording terminals
- Information on system status, each individual door and events

### Media management

- Secure and transparent access media management
- Easy handling of media, from issuing new media or replacement badges to returns

# Access control solutions for SAP

dormakaba jay cloud



The time and access management solution dormakaba jay cloud coordinates employee access rights according to their position in the company. This enables employee access rights to be administered directly from SAP SuccessFactors Employee Central in real time. The data is thereby saved in the cloud, which means it is always up to date and can be viewed at any time.

#### **Simply effective:**

- More security and transparency combined with lower corporate management costs
- Integration of access processes and time recording in the existing management environment of the HR department
- Reduced workload thanks to use of a cloud solution: secure, transparent and scalable at any time
- Data is always up to date
- High degree of flexibility for employees thanks to access regardless of location



# Access control solutions for small and medium-sized enterprises



Easy, central access control with the web-based platform, exivo. Critical doors are secured and monitored with electronic and wireless locking components. Using access media ensures the highest levels of flexibility and security, as the access rights of each individual medium can always be changed or revoked. All other doors are secured as usual with keys and mechanical locking systems, which can also be managed with exvivo.

## Simply effective:

- Easy planning and configuration as well as commissioning on site without special software or servers
- Convenient operation thanks to the intuitive assignment and modification of rights
- Location-independent access via the Internet and control via smartphone, tablet or PC
- Simple billing and full transparency due to consistent, predictable monthly costs
- Easy expansion of the system, retrofittable for any door and other entrances
- Immediate availability of updates thanks to the automatic update function
- Simple service request in the event of a malfunction



The simple, secure and browser-based access solution for small and medium-sized businesses. Within a very short time, the "out-of-the-box" solution can be rolled out and the modern user interface operated intuitively.

## Simply effective:

- Quick and easy commissioning
- Controlled and secure management from anywhere – access functionality, door status monitoring and alarm actions, interface to an intrusion detection system, alarm monitor and camera, visitor management
- Support for all modes: offline, Access-on-Card and online
- Reliable granting and denying of access, within seconds online or via remote access
- Choice of operating modes

# Access control solutions for small and medium-sized enterprises

## dormakaba evolo Manager



The flexible, wire-free complete solution for individual doors through to the management of all access points in one system. Whether inside or outside, for employees, visitors or suppliers – evolo is an access system that is easy to program.

Digital access components are stand-alone and can therefore be installed quickly and easily in almost any door. Existing mechanical locking systems are managed without any problems and can be upgraded with the evolo digital components.

### Simply effective:

- Modular design that can be upgraded as desired
- Access rights are granted quickly and easily
- High number of access media can be programmed
- Includes: Set up of up to 512 groups for group authorizations
- Allocation of individual rights with personal time windows
- Authorizations with fixed start and end times, e.g. for visitors
- Total security, even if a means of access is lost
- Practical elevator control – with only one reader in the elevator car, up to 49 floors can be controlled (also applicable for mailboxes)

## dormakaba CheckIn



The user-friendly and efficient software for the daily administration and programming of guest cards.

### Simply effective:

- User-friendly software for efficient check-in/check-out, available in many languages
- Battery-operated door elements are quick and easy to install
- Additional guest cards can be duplicated easily and quickly
- Guest cards that are taken away by guests automatically lose their authorization, blocking in the event of loss during the guest's stay via a servicemedium.
- Guest cards can be reused indefinitely
- Seamless integration: The software also allows for the management of mechanical keys

# Access control solutions for small businesses and Residential

dormakaba evolo smart



The evolo smart app controls who receives access to your door. No additional hardware is required to program the door components. Access to the door is either via a physical medium (card or key chip) or a smartphone (a so-called virtual key). The virtual key can be bought, managed and issued in the evolo smart app.

#### Simply effective:

- Fast and convenient programming of access rights via app
- Easy deletion and addition of access media and rights
- Setting up of temporary access authorizations
- For private residences and small companies with up to 50 users
- Access with smartphone, card or key fob
- Smartphone: no issuing of physical media
- Independent: evolo smart works offline

# Time & Attendance

## dormakaba Terminal 96 00



The ideal entry-level solution for time recording, access control and employee communication in a compact design. The user interface is freely configurable and can, for example, be designed in the company's own look – with the desired colors and icons, background images and customer-specific apps. Thanks to additional options such as CardLink, the range of functions can be extended as required and, for example, offline door components can be easily integrated.

### Simply effective:

- Bright 4" touchscreen
- Supports most RFID media
- Dustproof and waterproof in accordance with protection class IP 65
- Solid housing and robust glass front (option)
- Network integration and power supply via Power-over-Ethernet (PoE)
- Easy commissioning thanks to 1-click installation
- Integrated loudspeaker

# dormakaba Terminal 97 00



State-of-the art, simple time recording, intelligent access management and targeted employee communication in one solution. The user interface can be configured as desired. If desired, the display can use your own company look, with your own background images, colors, sounds, apps and (multimedia) content. Additional options such as a biometric reader or camera round off the system, which can be flexibly adapted to individual company requirements.

### Simply effective:

- Bright 7" touchscreen
- Energy-saving function
- Supports most RFID media
- Power supply options: 230 V AC, 24 V DC and Power-over-Ethernet (PoE)
- Integrated microphone and loudspeaker
- Video functionality
- WLAN and cell phone connection
- Network integration via Ethernet interface
- Easy commissioning thanks to 1-click installation



# Time & Attendance

## Terminal B-web 93 00

The user-friendly basic time recording terminal offers all the basics you need for easy time recording. A completely glass front with integrated display and capacitive keypad as well as five colored function keys and an operator text on the display help your employees enter their details.

### Simply effective:

- Basic time recording terminal
- Completely glass front with wear-resistant keypad
- Supports current RFID standards
- Expansion of functionalities through license extensions
- Supports biometric identification and verification solutions
- Easy network integration via an Ethernet interface
- Standard power supply via Power-over-Ethernet (PoE)
- Fast, secure 1-click installation
- Innovative 1-click analysis and 1-click replacement in conjunction with B-COMM



The special advantage of the B-web 93 00 is that additional functions can easily be added. The broad spectrum of different recording functions has already been broken down into attractive packages:

### **B-web 93 20**

The terminal B-web 93 20 offers particularly good entry-level time recording.

### **B-web 93 40**

A time management terminal for medium-sized companies with the intuitive "Guide by Light" operating concept that guarantees accuracy and security.

### **B-web 93 60**

The time recording terminal for large and complex organizations. Can also be used for access control, project time recording or as a recording terminal in an ERP system.

## Terminal B-eco



The Terminal B-eco offers a user-friendly solution with identification via RFID card, badge reader or biometric fingerprint for all data collection tasks and the collection of job data using a CCD barcode reader.

### Simply effective, for shop floor data collection:

- Real-time process and job monitoring
- Optimizing of individual work processes
- Easy personnel deployment planning
- Basic data for final costing

### Simply effective time recording:

- More efficient payroll accounting, including wages and salaries
- Automated accounting procedures
- Extremely accurate timesheets



# Shop floor data collection

## Data collection terminal B-web 95 00

The shop floor data collection terminals offer a wide range of data collection functionalities tailored to the needs of companies of different sizes.

### Simply effective:

- Ideal functional scope for entry-level shop floor data collection (SFDC)
- Completely glass front with capacitive, wear-resistant keypad
- Supports current RFID standards
- 16 ODC functions that can be parametrized as required with up to 18 input steps
- Supports DHCP/DNS and host communication via HTTPS
- Conforms to protection class IP 54

### B-web 95 00

The user-friendly basic terminal B-web 95 00 for individual configuration offers everything you need for simple shop floor data collection processes.

### B-web 95 20

Suitable for entry-level shop floor data collection in small companies and stores: It is equipped with 16 function keys for standard functions such as logging into/out of jobs or entering reasons for faults.

### B-web 95 40

Suitable for the complex requirements of shop floor data collection. It offers the complete range of functions for all SFDC processes.





# Solutions for ERP systems

## dormakaba b-comm ERP



dormakaba b-comm ERP – SAP ERP – is a software solution for time recording, shop floor data collection and access control. The solution relieves the higher-level SAP system of critical tasks and jobs. It performs the necessary dialogs with the connected recording devices and autonomously checks the incoming data as certified by SAP.

### Simply effective:

- A system for time recording, shop floor data collection and easy access control
- Certified data exchange with SAP
- Customized SAP connection thanks to customer-specific adjustments
- Master data maintenance in SAP only
- Automated system operation
- Web-based interface
- Other connections to the following ERP systems possible: Business ByDesign, Microsoft Dynamics AX, HR Access

## dormakaba b-comm for Workday



Certified time and shop floor data collection allows data to be transferred to your ERP systems. The data can be easily collected by various devices such as dormakaba terminals, mobile terminals, PCs and web terminals (PC/web capture).

### Simply effective:

- All integration is secure and seamless via standard Workday web services
- Real-time validation thanks to data collection solutions that are always available
- Validation data: employee data, organization data, activity recording
- Transaction data: Time and attendance, shop floor data collection (labor time only), absence management, leave requests (vacation requests)

# Interfacing solutions for third-party applications

## B-COMM communication software



B-COMM integration platform for fast and efficient administration of terminal systems and the associated functional areas, independent of computer or operating system platforms. The software enables the creation and administration of clients and communication channels, order processing and data exchange with partner applications.

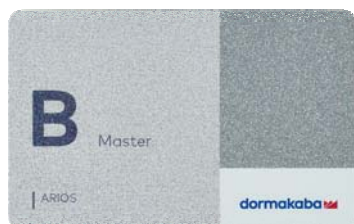
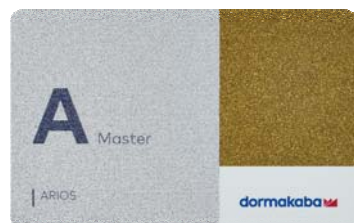
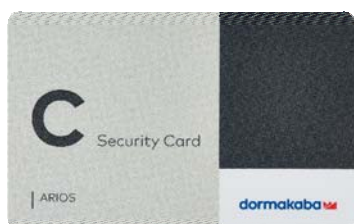


# Technology and function principles

## Kaba ARIOS

Kaba ARIOS (Advanced RFID Operation Security) is a security concept for access control systems, which uses the RFID technology MIFARE.

Kaba ARIOS is the only system worldwide that ensures process reliability throughout the entire supply chain.



# Technology and function principles

## dormakaba TouchGo



The electronic locking system with the TouchGo function means no more searching for keys. A simple touch of the door handle is all it takes for the lock to recognize whether the user is authorized to enter. It doesn't matter whether the TouchGo user medium is in your pocket, jacket or belt.

### Simply effective:

- Hands-free – your hand is the key
- Increased security and privacy – authorized access only
- Access authorization verification using RCID technology developed by dormakaba – simply touching the metal-receiving electrode – e.g. the door handle – is sufficient
- Transponder available as key fob, card holder or armband



## CardLink/AoC



The users receive their access rights at update readers, which are installed at central locations, e.g. at the staff entrance, in the elevator area or in the canteen. This process helps keep operating costs low.

## Biometric fingerprint systems

Pre-programmed time recording terminals and locking components with biometrics, either as the sole identification characteristic or as a supplement to a badge. The fingerprint uniquely identifies the person and is legally binding. This is a quick, practical and easy way to ensure unambiguous user identification. Further biometric technologies (e.g. iris recognition) can be easily integrated via existing interfaces.

### Simply effective:

- Unambiguous identification of people
  - Choose between identification (biometrics instead of badge) or verification (biometrics as a supplement to the badge)
- Simple, secure, easy to operate
- Biometric characteristics cannot be forgotten, lost, stolen or passed on to third parties
- Legal certainty – who registered when and where?
- Data protection fully guaranteed thanks to fingerprints that cannot be reconstructed



# Technology and function principles

## Mobile access



With mobile access, doors with and without a network connection are integrated into the access solution – simply, efficiently and securely. Access rights can be easily and flexibly transferred to employees, guests or service providers, to their smartphone, for example. This simplifies processes, because the issuing and returning of access media is no longer necessary. In addition to security, user comfort plays a major role: Access rights for isolated rooms or infrastructure facilities are simply assigned only when they are needed on site. For example, an assembling technician simply requests the required access rights by phone call or app and receives them immediately on their smartphone.

### Simply effective:

- Use of smartphone as means of access
- Can be combined with dormakaba online and stand-alone components
- Access rights are transmitted to the smartphone via a secure platform
- Door status and access events are transmitted to the dormakaba access solution

# Wireless



The wireless function connects the online and stand-alone systems and networks the digital access components.

The wireless access components are conveniently controlled and maintained from the desk: There is no need for on-site programming. You have full access to the door components from the computer.

**Simply effective:**

- Very easy to use thanks to programming from the desk
- Increased security for out-of-the-way doors: Thanks to immediate data transfer (e.g. withdrawal of rights in the event of loss of badge), there are no gaps in security
- Information about door status and access events (time/place/medium)
- Secure and cost-effective expansion of all dormakaba access solutions with the wireless function
- Fast, efficient planning and implementation of maintenance and updates
- Reduced administration and time requirements



Dorma and Kaba joining forces

electronic-access-data-en-082019  
Subject to change without notice

**Access Solutions**



Door Hardware  
- DHW



Interior Glass  
Systems - IGS



Entrance Systems  
- ENS



Lodging Systems  
- LGS



Safe Locks  
- SAL



Electronic Access &  
Data - EAD



Mechanical Key  
Systems - MKS



Service - SVC

**Wall Solutions**



Movable Walls

dormakaba India Private Limited  
Plot No. 48/3, Mahindra World City  
8th Avenue, Anjur Village  
Chengalpattu Taluk  
Kancheepuram District  
Tamil Nadu 603 002. INDIA  
T +91 44 67 400 200

**SERVICE TOLL FREE**  
1800 121 6414