

EMTEK®

ELECTRONIC LOCK

Entry Sets, Deadbolts & Leversets





OWNER/DESIGNER TESTIMONIAL

“Having remote, keyless access for guests was essential for our vacation property, but we were unwilling to compromise the design-driven nature of our project. The EMPowered™ SMART Lock was ideal for this, as we were able to pair it with a stylish EMTEK entry set.”

- Carlos Naude, Working Holiday Studio



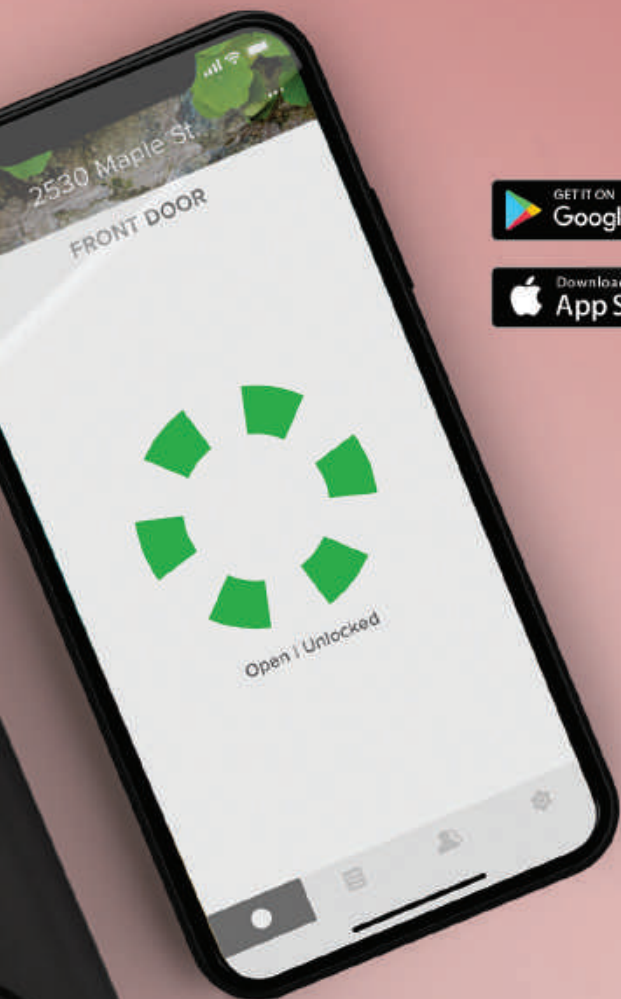
Works with Yale Access

Yale Access offers you trusted everyday convenience and security for your entire home, through smart security products and the easy-to-use Yale Access app*.

- Know that your home and belongings are secured from anywhere using the Yale Access app*.
- Share permanent, scheduled or temporary access with the people you trust.
- View a 24/7 activity feed, and receive real-time notifications, so you know who has access and when.
- Manage all of your Emtek, Yale or August Wi-Fi and Bluetooth products from one easy-to-use app*.



EMTEK®



* For use in the US and Canada only.



Unlocks Automatically

The lock will unlock as you approach, when you have your phone on you.



Control from Anywhere

Lock, unlock, share access, see who comes and goes & more using your app*, from anywhere.



Share Access

Create entry codes and virtual keys to share with people you trust.



DoorSense™

Includes DoorSense™, a sensor that tells you if your door is securely closed.



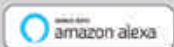
Voice Compatible

Lock, unlock and check lock status with Amazon Alexa, Google Assistant or Siri.



Locks Automatically

Enable auto lock to ensure your door always locks behind you.





Design Credit: Racheal Jackson @banyanbridges

What's Included



Pre-Installed Module
Allows your lock to communicate with the Yale Access app*



Connect Wi-Fi Bridge
A secure way to remotely access your lock



Surface Mount

or



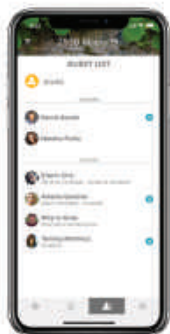
Flush Mount

DoorSense™
Checks the status of your door and tells you if your door is securely closed and locked

* For use in the US and Canada only.



AUTO-LOCK



VIRTUAL KEYS



AUTO-UNLOCK

Auto-Unlock

Auto-Unlock provides added convenience when you arrive home and relies on your phone's Bluetooth, Wi-Fi and GPS to know if you're home or away.

Yale Access uses two modes to enable Auto-Unlock to function: **Home Mode** and **Away Mode**. These modes indicate where Auto-Unlock thinks you are: at home or away from home.

When you are at home (in **Home Mode**), Auto-Unlock is not actively doing anything. It is waiting until you leave home.

When you approach your door, Auto-Unlock will unlock your door via Bluetooth. This means Auto-Unlock cannot operate your lock when you are away from home.

You are considered away from home when you leave your immediate neighborhood, which is about 200 meters, or a couple city blocks. It is only active when you return to your home area.



Lock & Unlock

Use the app to lock or unlock with your smart phone



Works with August Doorbells

Answer your door from anywhere with crisp, streaming video



Family & Guests

Share access to your home with the people you trust



Lock Settings

Customize your lock via the August app*



Activity Log

Monitor your door from anywhere, anytime



Voice Commands

"Hey Siri, lock my door" Use your voice with Amazon Alexa, Google Assistant & Siri



EMPowered™ SMART Keypad Lock

The **EMPowered™ Motorized Smart Keypad Lock - Works with Yale Access app*** is a sleek and modern smart deadbolt that features a backlit touchscreen keypad so even when you don't have your phone, you can unlock your door by entering your 4-8 digit entry code on the keypad. Lock the door behind you by simply tapping the keypad.

Finish Options:



US10B

US14

US15

US19

US26

EMPowered™ Motorized Smart Keypad Deadbolt

Shown in Satin Nickel (US15) finish



EXTERIOR TRIM



INTERIOR TRIM

- **Handing Not Required. Specify Exterior or Interior for Split Finish.**
- Standard door prep 2½" bore. Fits door thickness of 1½" - 2¼".
- Complete set includes both 2⅜" and 2¾" latches, strike plates and 4 AA batteries.
- EMPowered™ Deadbolt only available with square corner latch face plate.
- Emtek's standard mechanical and finish warranties apply, along with a two (2) year warranty on electronic components.

EMPowered™ Motorized Smart Keypad Entry Set

Shown in Polished Chrome (US26) with Baden Grip and Helio Lever*



EXTERIOR TRIM

INTERIOR TRIM

Finish Options:



US10B

US14

US15

US19

US26

EMPowered™ Motorized Smart Keypad Entry Set

Shown in Flat Black (US19) with Ares Grip and Aston Lever*



EXTERIOR TRIM

INTERIOR TRIM

* **Handing Required if Lever Used Inside. Specify Exterior or Interior for Split Finish.**

- Standard door prep 2½" bore. Fits standard door thickness of 1¾". Specify if thicker up to 2¼".
- Complete set includes both 2¾" and 2¼" latches, strike plates and 4 AA batteries.
- EMPowered™ Deadbolt only available with square corner latch face plate.
- Emtek's standard mechanical and finish warranties apply, along with a two (2) year warranty on electronic components.

EMPowered™ Motorized Smart Keypad Entry Set

Shown in Satin Nickel (US15) with Franklin Grip and Turino Lever*



EXTERIOR TRIM

INTERIOR TRIM

Finish Options:



US10B

US14

US15

US19

US26

EMPowered™ Motorized Smart Keypad Entry Set

Shown in Oil Rubbed Bronze (US10B) with Hamden Grip with Merrimack Lever*



EXTERIOR TRIM

INTERIOR TRIM

* **Handing Required if Lever Used Inside. Specify Exterior or Interior for Split Finish.**

- Standard door prep 2½" bore. Fits standard door thickness of 1¾". Specify if thicker up to 2¼".
- Complete set includes both 2¾" and 2¼" latches, strike plates and 4 AA batteries.
- EMPowered™ Deadbolt only available with square corner latch face plate.
- Emtek's standard mechanical and finish warranties apply, along with a two (2) year warranty on electronic components.



EMPowered™ SMART Lock Upgrade for EMTEK Keyed Products

The **EMPowered™ Motorized Smart Lock Upgrade - Works with Yale Access app*** is an unobtrusive smart lock unit that replaces the interior deadbolt trim of our many decorative keyed entry sets, deadbolts, and sideplates, simply converting and upgrading a standard lock into a smart-enabled lock.

Finish Options:



US10B

US14

US15

US19

US26

EMPowered™ Motorized Smart Lock Upgrade Entry Set



Baden Entry Set
with Dumont Lever



Ares Entry Set
with Round Knob



Davos Entry Set
with Helios Lever



Apollo Entry Set
with Stuttgart Lever



Lausanne Entry Set
with Myles Lever



Orion Entry Set
with Geneva Lever

EMPowered™ Motorized Smart Lock Upgrade Deadbolt



Square Deadbolt



Neos Deadbolt



#8 Deadbolt



Quincy Deadbolt



Rope Deadbolt



Wilshire Deadbolt

EMPowered™ Motorized Smart Lock Upgrade Sideplate



Quincy 5-1/2" C-to-C Keyed Sideplate
with Norwich Knobs



Modern 5-1/2" C-to-C Keyed Sideplate
with Helios Levers



Delaware 5-1/2" C-to-C Keyed Sideplate
with Waverly Knobs



Colonial 5-1/2" C-to-C Keyed Sideplate
with Lowell Glass Knobs



Rope 5-1/2" C-to-C Keyed Sideplate
with Rope Knobs



Wilshire 5-1/2" C-to-C Keyed Sideplate
with Waverly Knobs



20K+

COMBINATIONS

When combined with finishes + knobs/levers

With a range of different integration features, from voice command to remote access locking and unlocking from anywhere in the world via the August app*, the **EMPowered™** SMART **Lock Upgrade** provides modern technology in a frills-free package.

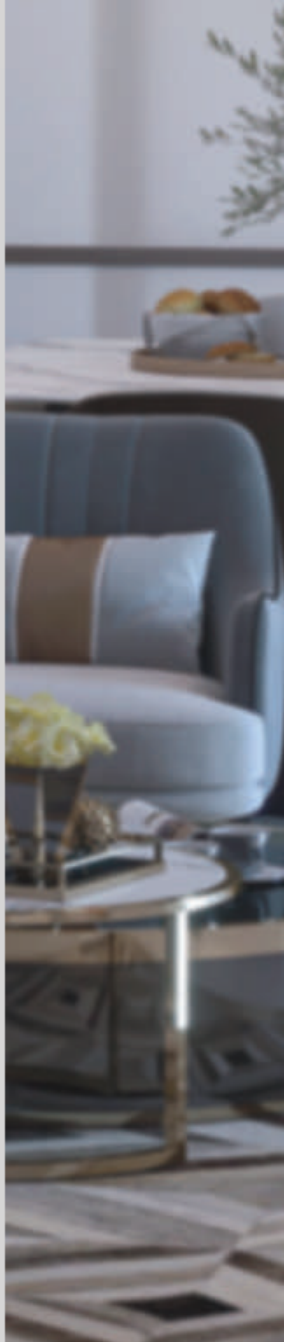


EMPowered™
SMART Lock Upgrade
products currently
available:

32
ENTRY SETS

15
DEADBOLTS

6
SIDEPLATES



Finish Options:



US4

US10B

US14

US15

US19

US26

EMTouch™ Electronic Keypad Entry Set

Shown in Flat Black (US19) finish with Athena Lever*



EXTERIOR TRIM

INTERIOR TRIM

* **Handing Required if Lever Used Inside.** Fits any door between 1 $\frac{3}{4}$ " to 2 $\frac{1}{4}$ " thick with a 2 $\frac{1}{8}$ " bore standard door prep. Standard latch is for 2 $\frac{3}{8}$ " backset. Specify 2 $\frac{3}{4}$ " backset if required. Complete set includes latch and strike plate.

EMTouch™ Electronic Keypad Deadbolt

Shown in Oil Rubbed Bronze (US10B) finish



EXTERIOR TRIM

INTERIOR TRIM

EMTouch™ Electronic Keypad Deadbolt

Shown in Satin Nickel (US15) finish



EXTERIOR TRIM

INTERIOR TRIM

Finish Options:



US4

US10B

US14

US15

US19

US26

EMTouch™ Electronic Keypad Leverset

Shown in Oil Rubbed Bronze (US10B) finish with Triton Levers*



EXTERIOR TRIM

INTERIOR TRIM

EMTouch™ Electronic Keypad Leverset

Shown in Satin Nickel (US15) finish with Helios Levers*



EXTERIOR TRIM

INTERIOR TRIM

* **Handing Required if Lever Used Inside.** Fits any door between 1 $\frac{3}{4}$ " to 2 $\frac{1}{4}$ " thick with a 2 $\frac{1}{8}$ " bore standard door prep. Standard latch is for 2 $\frac{3}{8}$ " backset. Specify 2 $\frac{3}{4}$ " backset if required. Complete set includes latch and strike plate.



Finish Options:



US3



US10B



US15

EMTouch™ Classic Style Electronic Keypad Entry Set

Shown in Satin Nickel (US15) finish with Elan Lever*



EXTERIOR TRIM

INTERIOR TRIM

* **Handing Required if Lever Used Inside.** Fits any door between 1 $\frac{3}{4}$ " to 2 $\frac{1}{4}$ " thick with a 2 $\frac{1}{2}$ " bore standard door prep. Standard latch is for 2 $\frac{3}{8}$ " backset. Specify 2 $\frac{3}{4}$ " backset if required. Complete set includes latch and strike plate.

EMTouch™ Classic Style Electronic Keypad Deadbolt

Shown in Satin Nickel (US15) finish



EXTERIOR TRIM

INTERIOR TRIM

EMTouch™ Classic Style Electronic Keypad Deadbolt

Shown in Oil Rubbed Bronze (US10B) finish



EXTERIOR TRIM

INTERIOR TRIM

Finish Options:



US3



US10B



US15

EMTouch™ Classic Style Electronic Keypad Leverset

Shown in Oil Rubbed Bronze (US10B) finish with Wembley Levers*



EXTERIOR TRIM

INTERIOR TRIM

EMTouch™ Classic Style Electronic Keypad Leverset

Shown in Satin Nickel (US15) finish with Milano Levers*



EXTERIOR TRIM

INTERIOR TRIM

* **Handing Required if Lever Used Inside.** Fits any door between 1¼" to 2¼" thick with a 2½" bore standard door prep. Standard latch is for 2¾" backset. Specify 2¼" backset if required. Complete set includes latch and strike plate.



Finish Options:



US10B



US15



US19



US26

Modern Style Electronic Keypad Entry Set

Shown in Satin Nickel (US15) finish with Helios Lever*



EXTERIOR TRIM

INTERIOR TRIM

* **Handing Required if Lever Used Inside.** Fits any door between 1 $\frac{1}{4}$ " to 2 $\frac{1}{4}$ " thick with a 2 $\frac{1}{8}$ " bore standard door prep. Standard latch is for 2 $\frac{3}{8}$ " backset. Specify 2 $\frac{1}{2}$ " backset if required. Complete set includes latch and strike plate.

Modern Style Electronic Keypad Deadbolt

Shown in Oil Rubbed Bronze (US10B) finish



EXTERIOR TRIM

INTERIOR TRIM

Modern Style Electronic Keypad Deadbolt

Shown in Polished Chrome (US26) finish



EXTERIOR TRIM

INTERIOR TRIM

Finish Options:



US10B

US15

US19

US26

Modern Style Electronic Keypad Leverset

Shown in Polished Chrome (US26) finish with Stuttgart Levers*



EXTERIOR TRIM

INTERIOR TRIM

Modern Style Electronic Keypad Leverset

Shown in Satin Nickel (US15) finish with Helios Levers*



EXTERIOR TRIM

INTERIOR TRIM

* **Handing Required if Lever Used Inside.** Fits any door between 1 $\frac{1}{4}$ " to 2 $\frac{1}{4}$ " thick with a 2 $\frac{1}{2}$ " bore standard door prep. Standard latch is for 2 $\frac{3}{8}$ " backset. Specify 2 $\frac{1}{2}$ " backset if required. Complete set includes latch and strike plate.



Finish Options:



FB



MB

Sandcast Bronze Style Electronic Keypad Entry Set

Shown in Medium Bronze (MB) finish with Teton Lever*



EXTERIOR TRIM

INTERIOR TRIM

* **Handing Required if Lever Used Inside.** Fits any door between 1¼" to 2¼" thick with a 2½" bore standard door prep. Standard latch is for 2¾" backset. Specify 2¼" backset if required. Complete set includes latch and strike plate.

Sandcast Bronze Style Electronic Keypad Deadbolt

Shown in Flat Black (FB) finish



EXTERIOR TRIM

INTERIOR TRIM

Sandcast Bronze Style Electronic Keypad Leverset

Shown in Medium Bronze (MB) finish with Durango Levers*



EXTERIOR TRIM

INTERIOR TRIM

Finish Options:



FB

MB

Classic Style Electronic Keypad Deadbolt

Shown in Oil Rubbed Bronze (US10B) finish



EXTERIOR TRIM

INTERIOR TRIM

Sandcast Bronze Style Electronic Keypad Leverset

Shown in Oil Rubbed Bronze (US10B) finish with Cortina Levers*



EXTERIOR TRIM

INTERIOR TRIM

Finish Options:



US3



US10B



US15

* **Handing Required if Lever Used Inside.** Fits any door between 1 $\frac{3}{4}$ " to 2 $\frac{1}{4}$ " thick with a 2 $\frac{1}{8}$ " bore standard door prep. Standard latch is for 2 $\frac{3}{8}$ " backset. Specify 2 $\frac{3}{4}$ " backset if required. Complete set includes latch and strike plate.



EMTouch™ and Emtek Classic Styles Electronic Keypad Locksets

Installs easily with only a Phillips head screwdriver.

- Fits any door between 1¾" to 2¼" thick with a 2½" bore standard door prep. Adaptors available for brass deadbolts and leversets to fit doors between 1⅜" and 1⅝" thick.
- Easy to use installation and programming instructions included.
- Factory programmed with 2 unique, secure user codes for use right out of the box.
- Can be programmed with up to 20 user codes of your choice.
- Programming changes can be made easily using the keypad.
- Keypad has a protective coating to prevent wear patterns.
- Illuminated keypad for easy and quick operation after dark.
- Low battery indicator lets you know when it's time to change the battery.
- Emtek's standard mechanical and finish warranties along with a 2 year warranty on electronic components.



Passage Function
Shown in Passage Mode



Storeroom/Gate
Function



Passage Function in Locked Mode

- Outside lever always locked
- Entry by code or key only
- Inside lever always free



Passage Function in Passage Mode

- Outside lever always free
- Entry by operating lever, no code or key required
- Inside lever always free



Storeroom Function

- Outside lever always locked
- Entry by code or key only
- Inside lever always free

EMTouch™ and all Emtek Keypad Locksets are covered by the following patents:

U.S. patents

8,176,761

8,141,400

Canadian patents

2,698,041

2,789,278

2,789,280

SELECT BRASS



L-Square Faceted (LS.FA)



L-Square Green Marble (LS.MRGN)



L-Square Hammered (LS.HA)



L-Square Knurled (LS.KN)



L-Square Light Terrazzo (LS.TZLT)



L-Square Smooth (LS.SM)



L-Square Straight Knurled (LS.SK)



L-Square Tribeca (LS.TR)



L-Square White Marble (LS.MRWH)



T-Bar Faceted (TA.FA)



T-Bar Green Marble (TA.MRGN)



T-Bar Hammered (TA.HA)



T-Bar Knurled (TA.KN)



T-Bar Light Terrazzo (TA.TZLT)



T-Bar Smooth (TA.SM)



T-Bar Straight Knurled (TA.SK)



T-Bar Tribeca (TA.TR)



T-Bar White Marble (TA.MRWH)



R-Bar Faceted (RA.FA)



R-Bar Green Marble (RA.MRGN)



R-Bar Hammered (RA.HA)



R-Bar Knurled (RA.KN)



R-Bar Light Terrazzo (RA.TZLT)



R-Bar Smooth (RA.SM)



R-Bar Straight Knurled (RA.SK)



R-Bar Tribeca (RA.TR)



R-Bar White Marble (RA.MRWH)

MODERN BRASS



Athena Lever (ATN)



Helios Lever (HLO)



Hermes Lever (HER)



Luzern Lever (LU)



Poseidon Lever (POS)



Stuttgart Lever (STU)

CLASSIC

MODERN BRASS

DESIGNER



Argos Lever
(AG)



Aston Lever (AST)



Basel Lever
(BA)



Breslin Lever (BRL)



Dumont Lever
(DT)



Freestone Lever
(FRL)



Geneva Lever
(GV)



Hercules Lever
(HEC)



Mercury Lever
(MC)



Myles Lever
(MYL)



Sion Lever
(SIO)



Spencer Lever
(SPN)



Triton Lever
(TRT)

TRADITIONAL AND TRANSITIONAL BRASS

CLASSIC



Cortina Lever
(C)



Manning Lever
(MNG)



Merrimack Lever
(ME)



Milano Lever
(M)



Turino Lever
(T)

DESIGNER



Coventry Lever
(CV)



Elan Lever
(EN)



Ribbon & Reed Lever (RBL)



Rope Lever
(RL)



Rustic Lever
(R)



Santa Fe Lever
(SF)



Wembley Lever
(WM)

ARTS & CRAFTS BRASS



Arts & Crafts Lever
(AC)



Hammered Lever
(HM)

SANDCAST BRONZE



Aurora Lever
(AR)



Bryce Lever
(BR)



Cimarron Lever (CR)



Cody Lever
(CD)



Durango Lever
(D)



Lariat Lever
(LR)



Mariposa Lever
(MA)



Montrose Lever
(MT)



Teton Lever
(TT)



Yuma Lever
(YM)



EMTEK®

EMTEK Products
Tel: 800-356-2741
Fax: 800-577-5771
emtek.com



Copyright © Emtek Products. Reproduction in whole or in part without the express written permission of Emtek Products is prohibited.