



McKinney

ARCHITECTURAL
HINGES

McKinney[®]
ASSA ABLOY

Experience a safer
and more open world

DEDICATED TO PRODUCING TOP QUALITY HINGES SINCE 1864, MCKINNEY PRODUCTS ARE DESIGNED TO SUITE WITH DOORS AND HARDWARE FROM THE ASSA ABLOY GROUP BRANDS. THESE COMMERCIAL DECORATIVE HINGES OPEN UP A WHOLE NEW WORLD OF DESIGN OPTIONS FOR YOUR DOOR OPENING.





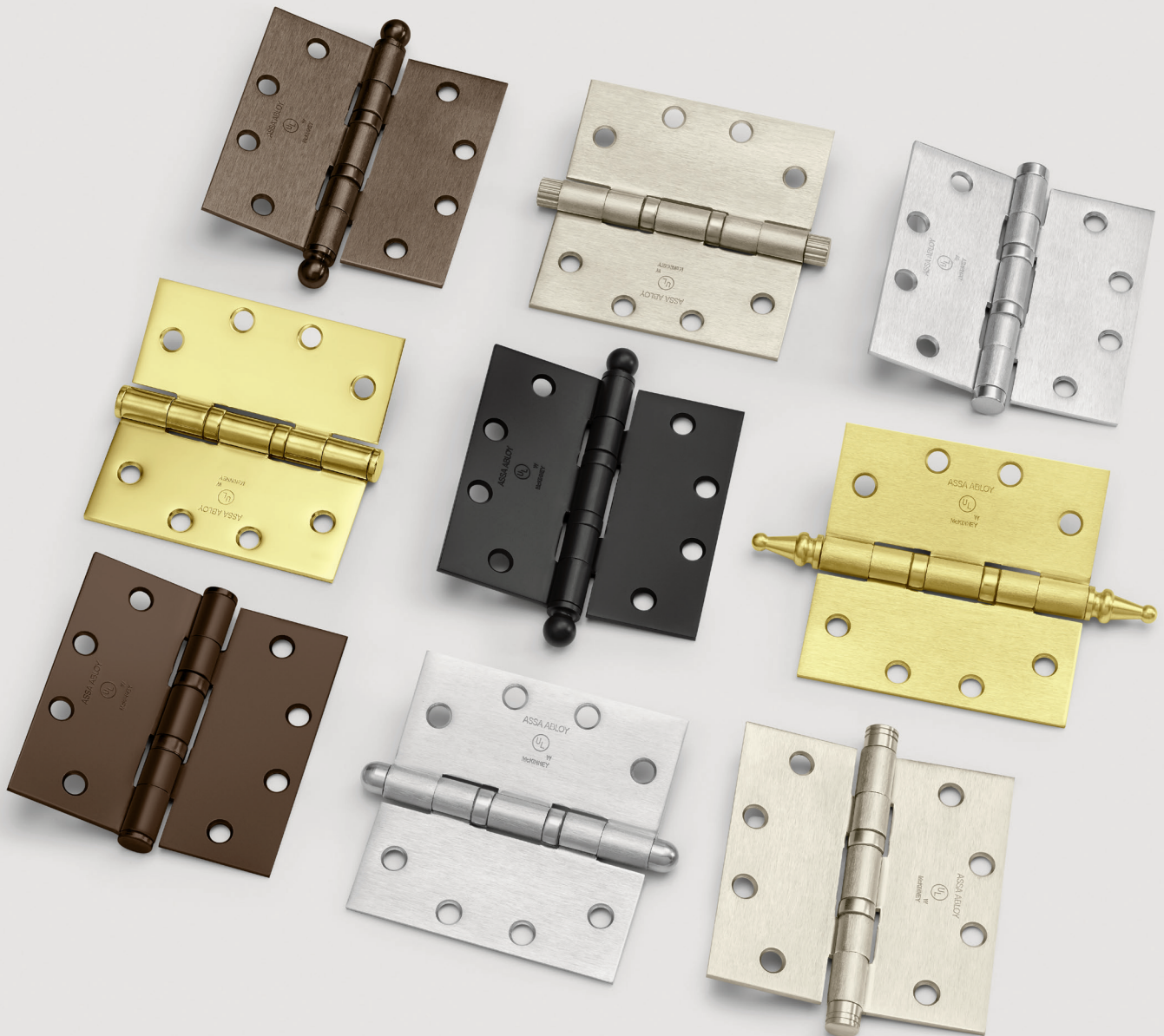
the good design studio

The Good Design Studio — your resource for beautiful doors, frames and hardware from ASSA ABLOY Group brands.

Visit www.thegooddesignstudio.com to learn more.

DECORATIVE TIPS

IT'S ALL ABOUT DETAILS, DETAILS, DETAILS. EVEN THE SMALLEST ACCESSORIES MATTER. DRESS UP YOUR HINGE BY ADDING DECORATIVE TIPS TO ENHANCE YOUR DESIGN. AVAILABLE FOR THE TWO, THREE, OR FIVE KNUCKLE HINGE, IN FLAT, ROUND, GROOVED, KNURLED OR LINED, THESE TIPS WILL GIVE THE FINISHING TOUCHES TO YOUR DECORATIVE SUITE.



DECORATIVE TIPS

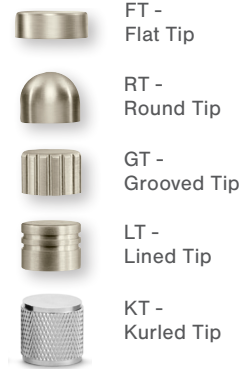


The cleanest of all hinge types. The two knuckle hinge is simple yet sophisticated.

Two Knuckle Hinge

- TA2731 - full mortise bearing hinge, standard weight, medium frequency doors, or doors with closing devices
- 4" x 4", 4-1/2" x 4", 4-1/2" x 4-1/2", 5" x 4-1/2", 5" x 5" sizes available
- Electrified options available
 - ElectroLynx® quick connect
 - Concealed circuit
- Handed

Available in:

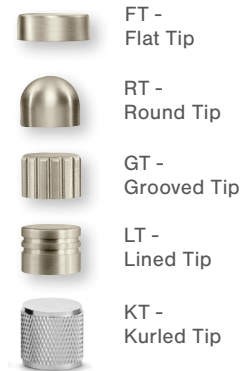


Reliable and classy. The three knuckle hinge provides that little extra detail.

Three Knuckle Standard Weight Hinge

- TA314/TA714 - full mortise bearing hinge, standard weight, medium frequency doors, or doors with closing devices
- 4" x 4", 4-1/2" x 4", 4-1/2" x 4-1/2", 5" x 4-1/2", 5" x 5" sizes available
- Electrified options available
 - ElectroLynx® quick connect
 - Concealed circuit
- Non-handed

Available in:



the good design studio

CHECK OUT COLLECTION 19 AT THE GOOD DESIGN STUDIO, FEATURING OUR KNURLED HINGE TIPS THAT COMPLEMENT ROCKWOOD ARCHITECTURAL DOOR PULLS, CORBIN RUSSWIN, AND SARGENT DECORATIVE LEVERS. THE KNURLED SURFACE OFFERS A TEXTURED DESIGN, ENHANCING BOTH THE AESTHETICS OF THE DOOR OPENING AND THE GRIP FOR A BETTER USER EXPERIENCE.



Strength and beauty. The heavy weight three knuckle hinge commands attention.

Three Knuckle Heavy Weight Hinge

- TA786 - full mortise bearing hinge, extra heavy doors, or those exposed to high frequency use
- 4-1/2" x 4", 4-1/2" x 4-1/2", 5" x 4-1/2", 5" x 5" sizes available
- Electrified options available
 - ElectroLynx® quick connect
 - Concealed circuit
- Non-handed

Available in:



With it's one-piece construction, the five knuckle hinge is dependable and long-lasting.

Five Knuckle Standard Weight Hinge

- TA2314/TA2714 - full mortise bearing hinge, standard weight, medium frequency doors, or doors with closing devices
- 4" x 4", 4-1/2" x 4", 4-1/2" x 4-1/2", 5" x 4-1/2", 5" x 5" sizes available
- Electrified options available
 - ElectroLynx® quick connect
 - Concealed circuit
- Non-handed

Available in:

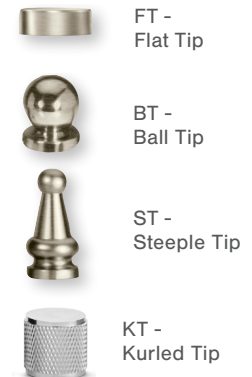


The heavy weight five knuckle hinge is robust and strong, exceeding expectations.

Five Knuckle Heavy Weight Hinge

- T4A3386/T4A3786 - full mortise bearing hinge, extra heavy doors, or those exposed to high frequency use
- 4-1/2" x 4", 4-1/2" x 4-1/2", 5" x 4-1/2", 5" x 5" sizes available
- Electrified options available
 - ElectroLynx® quick connect
 - Concealed circuit
- Non-handed

Available in:



SPLIT FINISHING

MIX IT UP A BIT! COMBINE BRIGHT WITH SATIN, OR LIGHT WITH DARK, AND CREATE THAT EXTRA BIT OF DRAMA FOR YOUR OPENING. THE MCKINNEY SPLIT FINISH OFFERING ALLOWS YOU TO CUSTOMIZE YOUR HINGE TO COMPLEMENT ANY BUILDING INTERIOR.



SPLIT FINISHING

Finishes

10BE	Dark Oxidized Satin Bronze Equivalent	26	Bright Chrome
14	Bright Nickel, Clear Coated	26D	Satin Chrome
15	Satin Nickel, Clear Coated	BSP	Black Suede Powder Coat
		WSP	White Suede Powder Coat



For custom powder coat options, contact factory.



Two Knuckle Hinge, Flat Tips

Shown - Satin chrome hinge
Bright chrome tips



Two Knuckle Hinge, Round Tips

Shown - Black suede powder
coat hinge
Satin nickel tips



Three Knuckle Hinge, Flat Tips

Shown - Bright chrome hinge
Black powder
coat tips



Three Knuckle Hinge, Round Tips

Shown - Satin nickel hinge
Satin nickel tips



Five Knuckle Hinge, Button Tips

Shown - Black suede powder
coat hinge
Satin chrome tips



Five Knuckle Hinge, Button Tips

Shown - Satin chrome hinge
Bright chrome tips

OLIVE KNUCKLE

WOULD YOU LIKE AN OLIVE WITH YOUR DOOR? THE OVAL SHAPED KNUCKLE IS A CLASSIC DESIGN THAT HAS BEEN AROUND FOR CENTURIES. RECOMMENDED FOR USE ON DOORS OF AVERAGE WEIGHT WITH AVERAGE FREQUENCY, SUCH AS OFFICES, RESTAURANTS, RECREATIONAL FACILITIES AND RESIDENCES; THIS HIGH-END HINGE IS SUITABLE FOR CONTEMPORARY AND TRADITIONAL INTERIORS.



OLIVE KNUCKLE



Olive Knuckle Hinge

- Designation: TA3383
- Forged brass, polished and finished
- Full mortise standard weight bearing hinge
 - Handed
 - Size Open: 6" x 3-7/8"
 - Width of leaves: 13/16"
- Bearing contains anti-friction component
- For use on interior or exterior hollow metal and wood frame doors
 - 1-3/8" to 1-3/4" thick doors
- Cannot be electrified

Finishes

03	Bright Brass, Clear Coated
03NL	Bright Brass, No Lacquer
10B	Dark Oxidized Satin Bronze, Oil Rubbed
10BE	Dark Oxidized Satin Bronze, Equivalent
14	Bright Nickel, Clear Coated
15	Satin Nickel, Clear Coated
26	Bright Chrome
26D	Satin Chrome
BSP	Black Suede Powder Coat
WSP	White Suede Powder Coat



SQUARE BARREL

CLEAN, CRISP, AND CLASSY - THE TWO AND THREE KNUCKLE SQUARE BARREL HINGES MAKE A BOLD STATEMENT. PAIRED WITH DECORATIVE LEVERS AND SQUARE TRIM SET FROM CORBIN RUSSWIN OR SARGENT AND ROCKWOOD PULLS AND ACCESSORIES, YOUR DOOR OPENING WILL BE ALL SQUARED AWAY.



SQUARE BARREL



Two Knuckle Square Barrel Hinge

- Designation: SQ3331
- Extruded brass
- Material thickness: .177"
- Handed
- Size: 4-1/2" x 4-1/2"
- Bearing contains anti-friction component
- Recommended for use on doors of average weight with average frequency
 - Interior or exterior hollow metal and wood frame doors
 - 1-3/4" thick doors
 - Used with square edge doors only
- Cannot be electrified

Finishes

03	Bright Brass, Clear Coated
10B	Dark Oxidized Satin Bronze, Oil Rubbed
10BE	Dark Oxidized Satin Bronze, Equivalent
14	Bright Nickel, Clear Coated
15	Satin Nickel, Clear Coated
26	Bright Chrome
26D	Satin Chrome
BSP	Black Suede Powder Coat
WSP	White Suede Powder Coat



Three Knuckle Square Barrel Hinge

- Designation: SQ314
- Material thickness: .177"
- Non-Handed
- Sizes: 4-1/2" x 4-1/2", 4-1/2" x 4"
- Bearing contains anti-friction component
- Recommended for use on doors of average weight with average frequency
 - Interior or exterior hollow metal and wood frame doors
 - 1-3/4" thick doors
 - Used with square edge doors only
- UL Listed for both hollow metal or steel covered composite fire doors rated up to 3 hours
- UL Listed for wood core fire doors rated 20 minutes
- Cannot be electrified

Finishes

32D	Satin Stainless Steel
-----	-----------------------



CONCEALED

BEAUTIFULLY DISGUISED. MCKINNEY

CONCEALED HINGES VIRTUALLY DISAPPEAR

FROM VIEW WHEN AN OPENING IS

CLOSED, WHILE PROVIDING AESTHETIC

CONTINUITY WHEN A DOOR IS OPEN.



CONCEALED

Features

- Base material: Zinc alloy
- Non-handed
- Opening angle: 180 degrees
- 3-Dimensional adjustability
- For wood or hollow metal doors with wood or metal frames



Finishes

- Satin Chrome
- Satin Stainless Steel (MK80SS only)
- Matte Black
- Matte White (MK100 & MK80A only)
- Special finishes available, see website for options

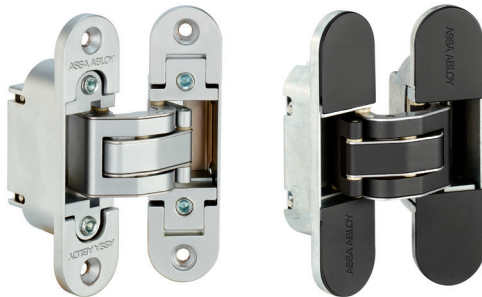
MK40A Series

- Snap-on covers included
- Overall hinge length: 115mm (4.53")
- Hinge width: 23mm (.91")
- Door thickness minimum: 1-1/4"

When installing with a door closer at least 3 hinges are required, and reduce maximum door weight in chart by 30%.

HINGE CAPACITY

Number of Hinges	Door Width			
	32"	36"	42"	48"
2	92 lbs	88 lbs	72 lbs	66 lbs
3	105 lbs	99 lbs	81 lbs	74 lbs
4	116 lbs	110 lbs	86 lbs	79 lbs



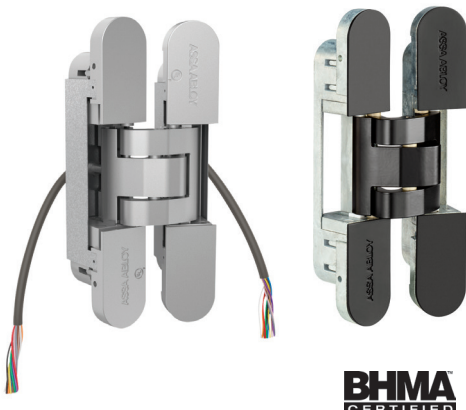
MK80/ MK80A / MK80SS Series

- MMK80/MK80SS - no covers, MK80A - Snap-on covers included
- Overall hinge length: 111.5mm (4.39")
- Hinge width: 29mm (1.14")
- Door thickness minimum: 1-3/8"
- UL Listed for hollow metal, steel covered composite and wood core fire doors rated 20 minutes (MK80/MK80A)
- UL Listed for both hollow metal or steel covered composite fire doors rated up to 3 hours and rated 20 minutes for wood core fire doors (MK80SS only)

When installing with a door closer at least 3 hinges are required, and reduce maximum door weight in chart by 30%.

HINGE CAPACITY

Number of Hinges	Door Width			
	32"	36"	42"	48"
2	185 lbs	176 lbs	143 lbs	132 lbs
3	211 lbs	198 lbs	160 lbs	149 lbs
4	233 lbs	220 lbs	171 lbs	158 lbs



MK100 / MK100ME Series

- Snap-on covers included
- Overall hinge length: 160 mm (6.30")
- Hinge width: 28mm (1.10")
- Door thickness minimum: 1-3/8"
- UL Listed for hollow metal, steel covered composite and wood core fire doors rated 20 minutes
- MK100ME available in CC12 or QC12 configurations
- MK100ME available in Satin Chrome and Matte Black only
- ANSI/BHMA 156.1 Grade 1 (MK100 only)

When installing with a door closer at least 3 hinges are required, and reduce maximum door weight in chart by 30%.

HINGE CAPACITY

Number of Hinges	Door Width			
	32"	36"	42"	48"
2	224 lbs	220 lbs	180 lbs	165 lbs
3	253 lbs	246 lbs	202 lbs	185 lbs
4	282 lbs	275 lbs	216 lbs	198 lbs

CONCEALED



MK150 Series

- Magnetic covers included
- Overall hinge length: 200 mm (7.87")
- Hinge width: 32 mm (1.26")
- Door thickness minimum: 1-1/2"
- UL listed for hollow metal, steel covered composite and wood core fire doors rated 20 minutes

When installing with a door closer at least 3 hinges are required, and reduce maximum door weight in chart by 30%.

HINGE CAPACITY	Number of Hinges	Door Width			
		32"	36"	42"	48"
	2	366 lbs	326 lbs	280 lbs	245 lbs
	3	412 lbs	367 lbs	315 lbs	275 lbs
	4	457 lbs	408 lbs	350 lbs	306 lbs



MK200 Series

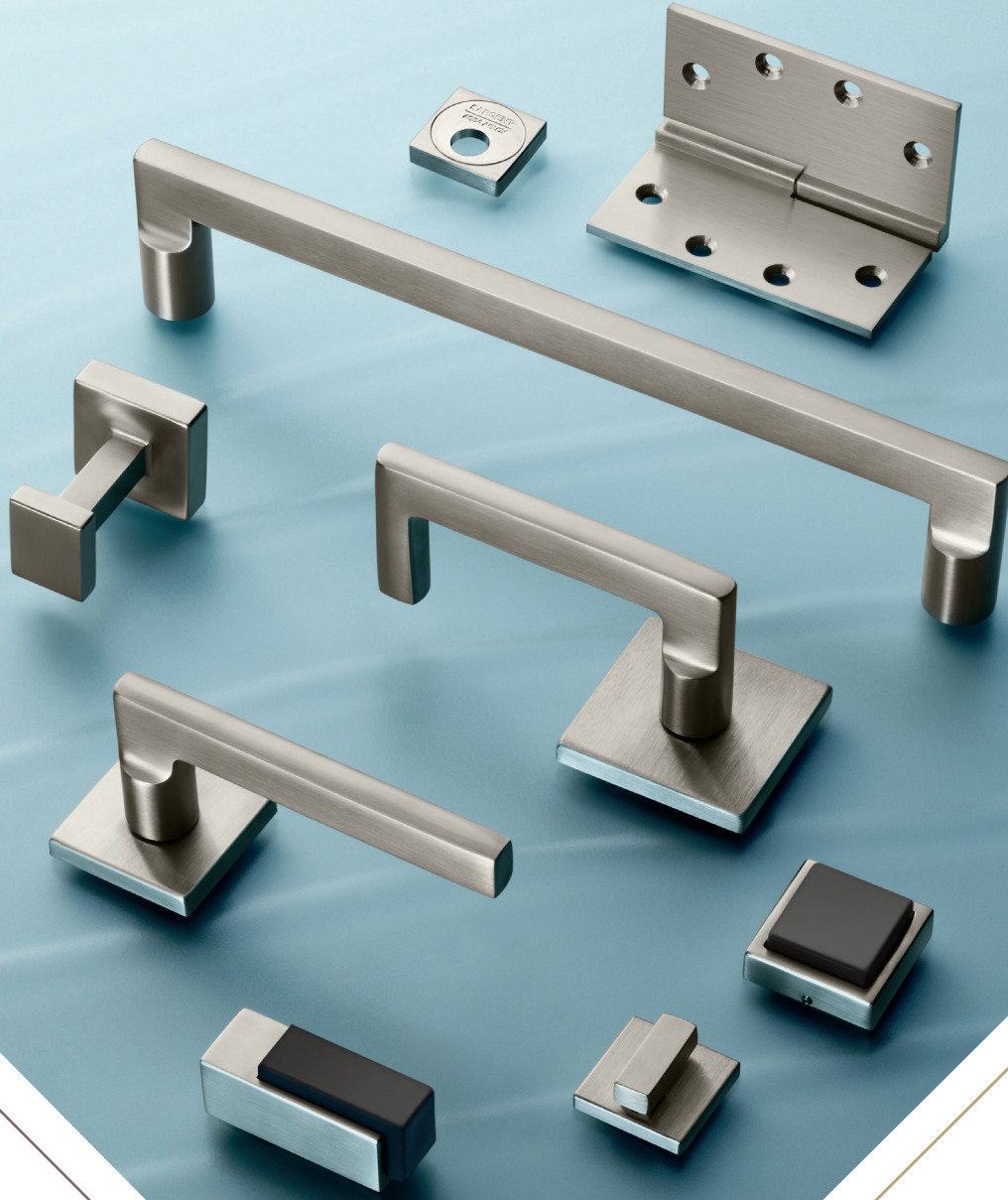
- Magnetic covers included
- Overall hinge length: 260 mm (10.24")
- Hinge width: 36 mm (1.42")
- Door thickness minimum: 1-3/4"

When installing with a door closer at least 3 hinges are required, and reduce maximum door weight in chart by 30%.

HINGE CAPACITY	Number of Hinges	Door Width			
		32"	36"	42"	48"
	2	487 lbs	434 lbs	373 lbs	326 lbs
	3	548 lbs	489 lbs	419 lbs	367 lbs
	4	609 lbs	543 lbs	466 lbs	408 lbs

The ASSA ABLOY Group is the global leader in access solutions.
 Every day, we help billions of people experience a more open world.

ASSA ABLOY Opening Solutions leads the development within
 door openings and products for access solutions in homes, businesses
 and institutions. Our offering includes doors, frames, door and window
 hardware, mechanical and smart locks, access control and service.



ASSA ABLOY Opening Solutions
 Architectural Accessories Group
 225 Episcopal Road
 Berlin, CT 06037
 1 800 346 7707
www.assaabloydooraccessories.us

ASSA ABLOY Opening Solutions
 Door Security Solutions Canada
 160 Four Valley Drive
 Vaughan, ON L4K 4T9
 1 800 461 3007
www.assaabloydss.ca