

# International Cylinders

Medeco's international cylinders are designed to fit in locksets of major world manufacturers. In addition to international uses, many of these cylinders fit imported hardware used in North America. Medeco offers a variety of international cylinders including European profile and modular cylinders in both mechanical and Intelligent Key technologies. The Medeco European Profile cylinder has a teardrop shape that fits into storm doors, upscale hardware and specialty applications and is available in single, half and double cylinder versions. Cylinders are also available in: oval, round, and "snowman" formats.



### Patented Key Control

Patent-pending key control protects against unauthorized duplication of keys (Medeco 4\*).



### Protection Against 3D Printing

A patent-pending movable element in the M4\* key deters unauthorized 3D printed copies of keys or blanks.



### Picking and Bumping Protection

M4\* cylinders use cylinder side pins, a lift pin and a movable key element to engage a sidebar that prevents the key from turning until the elements are rotated and aligned in the correct position, protecting against bumping, picking and other attacks.



### Protection From Physical Attack

M4\* cylinders are UL 437 Listed and use hardened steel inserts positioned in critical areas of the cylinder, providing a high degree of drill and picking resistance (For the highest grade of protection, Euro Profile cylinders and Ovals – should be installed with hardened escutcheons.).



### Special Angle Cut Keys

Requires a special key cutting machine and access to Medeco specific blanks, available in a variety of restrictions to support every need.



### Intelligent Key Cylinders

Medeco's international cylinders are also available in electronic Intelligent Key format for loss & liability control.



### Master Keying Capabilities

M4\* international-style cylinders can be master keyed into a system containing M4 and M4 BiLevel.

### Technical Information:

- Utility patented key control provides protection from unauthorized duplication of keys in most countries (M4\*, M3)
- Superior master keying capability to accommodate systems of virtually any size
- Solid brass construction provides high quality and long cylinder life
- Nickel plated pins provide exceptional wear resistance and additional hardened stainless steel pins provide drill resistance
- European profile cylinders retrofit into virtually any manufacturers' locksets requiring DIN Standard cylinders
- Pin chamber set screws provide ease of rekeying and resist comb attacks
- 5 and 6 pin cylinders available

### Certification (M4 Pending):

- SKG \*\*\* Netherlands
- Swedish Standards SS3522
- EN1303 -2005
- DIN18254
- EN1303:2015

### Warranty:

Warranted for two (2) years against manufacturer's defects. See the Medeco® limited warranty for full details

### Available Key Technologies:

#### Mechanical:

- M4/M4 BiLevel
- M<sup>3</sup>/M<sup>3</sup> BiLevel
- X4

#### Intelligent Key:

- M<sup>3</sup> CLIQ
- Classic CLIQ
- XT
- X4 CLIQ

**Note:** M3 and M4 BiLevel not available in Euro Dbl.

# EPIC–Euro Profile Interchangeable Core

Medeco EPIC-Euro Profile cylinders are designed to accept a special, slab-sided, small format interchangeable core (SFIC) cylinder to retrofit into most standard European Profile applications.

Medeco Euro profiles can be furnished with Medeco's patented X4 technology, offering unmatched key control, the widest array of retrofit cylinders and four times the master keying capability.



#### Patented Key Control

Protects against unauthorized duplication of your keys.



#### Uses Existing Hardware

European profile cylinders retrofit into virtually any manufacturers' locksets requiring DIN Standard cylinders.



#### Superior Master Keying Capability

Furnished with Medeco X4 SFIC, EPIC offers superior master keying to accommodate very large systems.

### Medeco X4 Technical Information

- 6 and 7 Pin cylinders available
- Solid nickel silver pins
- Many cylinder formats available
- Profile cylinders available in multiple sizes, finishes and functions
- Where interchangeable core is not required, Euro profile cylinders are also available in modular components and assembled standard lengths.
- Solid brass construction provides high quality and long cylinder life
- Solid nickel silver pins and keys
- European Profile Cylinders retrofit into virtually any manufacturers' locksets equivalent to DIN Standards
- For the highest grade of protection, Euro Profile cylinders and Ovals – should be installed with hardened escutcheons

### Warranty

Warranted for (2) years against manufacturing defects. See Medeco Limited Warranty for full details.

**EPIC–Euro Profile Interchangeable Core**

Description	Part Number	Price
<b>6 Pin Part Numbers</b>		
EPIC Euro Double 37.9 mm/37.9mm	2326D21	
EPIC Euro Half 37.9mm	2326H01	
EPIC Euro with Thumbturn 40mm int/39.2 mm ext	2326S12X*	
Small Format Interchangeable Core (SFIC)	3360000R (P)	
Small Format Interchangeable Core (SFIC)	3360000R (S)	
<b>7 Pin Part Numbers</b>		
EPIC Euro Double 41.73mm/41.73mm	2324D21	
EPIC Euro Double 41.73mm/55mm	2324D25	
EPIC Euro Half 41.73mm	2324H01	
EPIC Euro Half 55mm	2324H05	
EPIC with Thumbturn 40mm int/43mm ext	2324S12X	
EPIC with Thumbturn 40mm int/55mm ext	2324S15X	
EPIC with Thumbturn 55mm int/43mm ext	2324S52X	
Small Format Interchangeable Core (SFIC)	3370000R (P)	
Small Format Interchangeable Core (SFIC)	3370000R (S)	

\* X denotes thumb turn. Please see following page for thumb turn. EPIC sold less cylinder.

(P) = Pinned (combined)

(S) = Sub-assembled (uncombined)

Surcharges for Master Keying, Custom Coining and Custom Stamping apply, see page 195.  
Refer to the XT and CLIQ Intelligent Key sections for format availability and pricing.

## How To Order International Cylinders - Euro-Profile

<p><b>1</b></p> <p><b>23130 05500</b> <b>base part #</b> <b>example</b></p> <p>Refer to pages 177-179 for descriptions and technical specifications to find the corresponding base part number.</p>	<p><b>2</b></p> <p><b>H</b> <b>technology</b></p> <p>H = M4 P = M4 BiLevel T = M<sup>3</sup> J = M<sup>3</sup> BiLevel S = M<sup>3</sup> CLIQ W = Biaxial - = Original K = KM C = Classic CLIQ N = X4 M = X4 CLIQ</p>	<p><b>3</b></p> <p><b>05</b> <b>finish</b></p> <p>Refer to the inside back cover of this catalog for finish options.</p>	<p><b>4</b></p> <p><b>M4</b> <b>keyway</b></p> <p>Insert keyway if known or contact Customer Service for help.</p>	<p><b>5</b></p> <p><b>P</b> <b>pinning</b></p> <p>S = Sub-Assembled (Uncombined) N = Sub-assembled, - No side pins (M4 only) - No slider (M3 only) P = Pinned (Combinated) M = Master Keyed R = Master Keyed - blade and side pins (Medeco 4 only)</p>	<p><b>6</b></p> <p><b>624</b> <b>side pin code</b> <b>(Medeco 4 only)</b></p> <p>Insert side pin code if known or contact Customer Service for help.</p>
---	---	--	--	--	--

### BUILD A BASE PART #:

**23130 X X X X X X**

**International Cylinder** ———

**Profile Design** ———

**Function** ———

\*0 = Thumbturn Cylinder with "SR" Round Knob  
1 = Half Cylinder  
2 = Double Cylinder\*  
\*3 = Thumbturn Cylinder with Low Profile "LP" Knob  
\*4 = Thumbturn Cylinder with Decorative "RD" Knob  
\*5 = Thumbturn Cylinder with Lever "RL" Knob  
\*6 = Thumbturn Cylinder with "CR" Crescent Knob  
\*7 = Thumbturn Cylinder with "SP" Spade Knob  
\*L = Thumbturn Cylinder with "L" Less Knob

**Number of Pins** ———

5 = 5 Pins  
6 = 6 Pins  
7 = 7 Pins

\*Not available in M3 & M4 BiLevel

**Interior/Exterior Length Extensions**

0 = No Extension	5 = 25 mm (.984")
1 = 5 mm (.197")	6 = 30 mm (1.18")
2 = 10 mm (.394")	7 = 35 mm (1.38")
3 = 15 mm (.591")	8 = 40 mm (1.57")
4 = 20 mm (.787")	9 = 45 mm (1.77")

**Cam Position**  
**(from outside with bible down)**

1 = 1 o'clock  
2 = 10 point multi-gear  
3 = EuroLine Module  
5 = 5 o'clock  
7 = 7 o'clock  
8 = Multiposition (half cylinder only)  
0 = 11 o'clock

\*Thumbturn/Cam position available at 5 and 11 o'clock only

**Assembly Variation for the BiLevel with Original Technology**

H = High Security  
B = Standard Security  
J = Standard Security all except Double Euro Profile

## How To Order Other International Cylinders

Complete part numbers are required for all orders. To determine the correct part number, fill in the “X’s” in sequential order.

<p><b>1</b></p> <p><b>2305016</b> base part # example</p> <p>Refer to pages 180-183 for descriptions and technical specifications to find the corresponding base part number.</p>	<p><b>2</b></p> <p><b>H</b> technology</p> <p>H = M4 P = M4 BiLevel T = M<sup>3</sup> J = M<sup>3</sup> BiLevel S = M<sup>3</sup> CLIQ W = Biaxial - = Original K = KM C = Classic CLIQ N = X4 M = X4 CLIQ</p>	<p><b>3</b></p> <p><b>05</b> finish</p> <p>Refer to the inside back cover of this catalog for finish options.</p>	<p><b>4</b></p> <p><b>M4</b> keyway</p> <p>Insert keyway if known or contact Customer Service for help.</p>	<p><b>5</b></p> <p><b>P</b> pinning</p> <p>S = Sub-Assembled (Uncombined) N = Sub-assembled, - No side pins (M4 only) - No slider (M3 only) P = Pinned (Combinated) M = Master Keyed R = Master Keyed - blade and side pins (Medeco 4 only)</p>	<p><b>6</b></p> <p><b>624</b> side pin code (Medeco 4 only)</p> <p>Insert side pin code if known or contact Customer Service for help.</p>
---	--	---	---	---	--

### BUILD A BASE PART #:

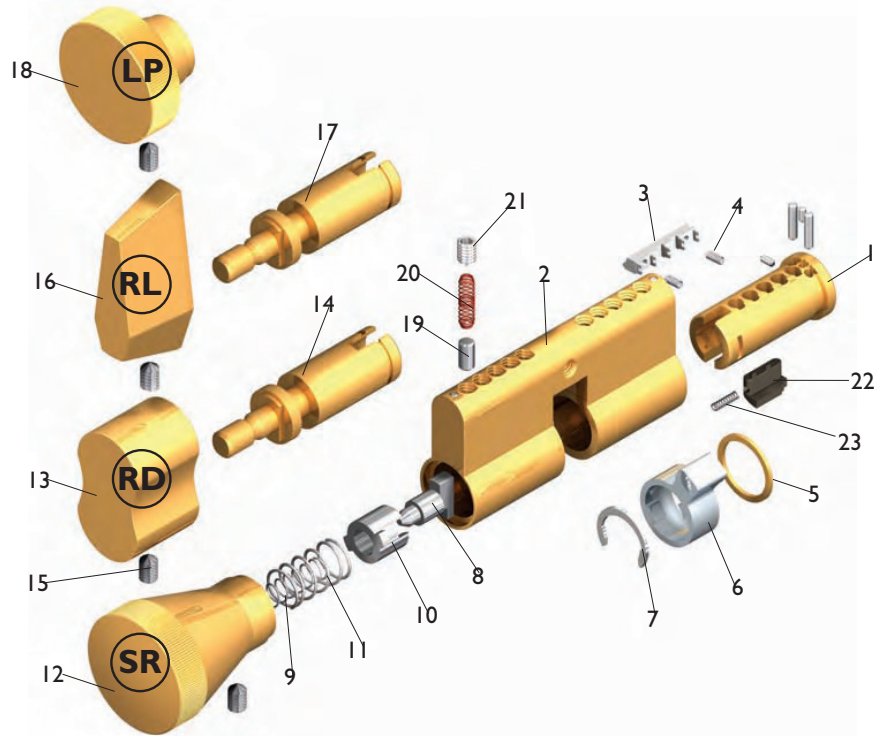
**23 XXX XXX X**

<p><b>International Cylinder</b></p>	<p><b>Design</b></p> <ul style="list-style-type: none"> <li>010 = Danish Round (Ruko Round)</li> <li>030 = Australian Oval</li> <li>040 = British Oval (Union Oval)† No extension.*</li> <li>050 = Scandinavian Oval Ext. (ASSA Oval)</li> <li>060 = Scandinavian Oval Int. (ASSA Oval)</li> <li>070 = Norwegian Oval (TrioVing Oval)</li> <li>080 = Scandinavian Snowman</li> <li>090 = Scandinavian Round Ext. (ASSA Round)</li> <li>100 = Scandinavian Round Int. (ASSA Round)</li> <li>140 = Italian Outer Gate Lock, 3 Pin</li> <li>150 = Italian Outer Gate Lock, 5 Pin</li> <li>160 = Italian Roller Shutter, 4 Pin</li> </ul>	<p><b>Cam Position (British Oval)*</b></p> <ul style="list-style-type: none"> <li>0 = 11 o'clock</li> <li>1 = 1 o'clock</li> <li>5 = 5 o'clock</li> <li>7 = 7 o'clock</li> </ul>
<p><b>Function*</b></p> <ul style="list-style-type: none"> <li>0 = Thumbturn Cylinder with “RL” Knob Union Oval only</li> <li>1 = Half Cylinder</li> <li>2 = Double Cylinder</li> </ul>	<p><b>BiLevel w/ Original Technology</b></p> <ul style="list-style-type: none"> <li>H = High Security</li> <li>B = Standard Security</li> </ul>	<p><b>Number of Pins</b></p> <ul style="list-style-type: none"> <li>3 = 3 Pins</li> <li>4 = 4 Pins</li> <li>5 = 5 Pins</li> <li>6 = 6 Pins</li> </ul>

† Union Oval Thumbturn Position at 5 and 11 o'clock only.

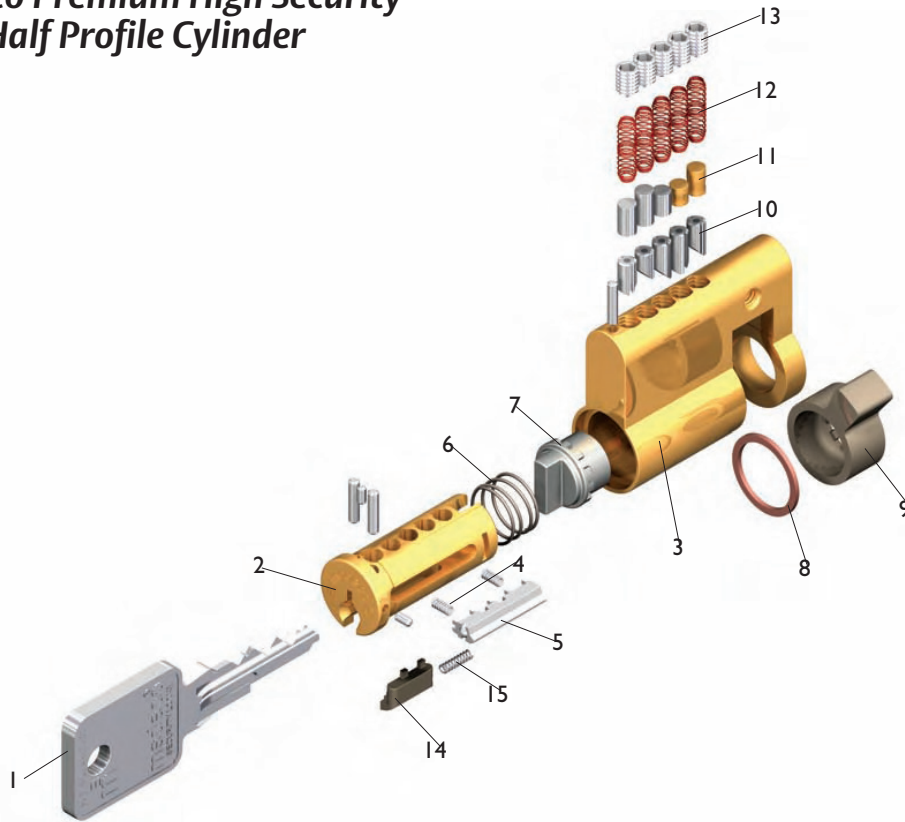
\*British Oval is the only design that requires a function number and cam position to be selected. It is non-extending.

## Medeco Premium High Security Euro Thumbturn Profile Cylinder



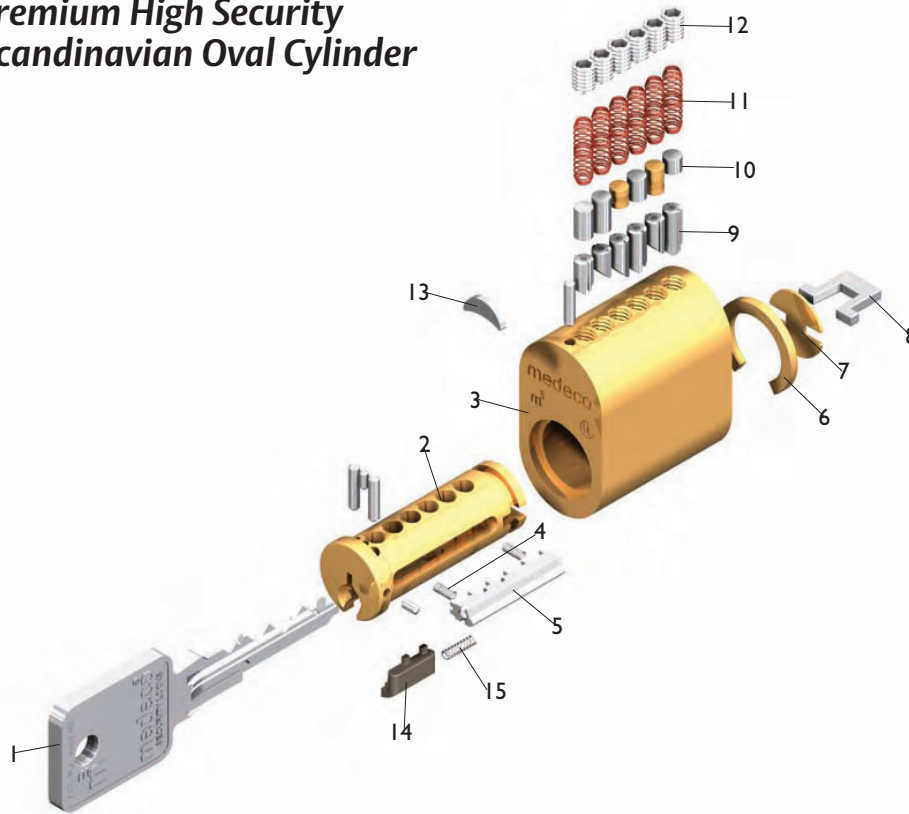
Item	Description	Part Number
1	Plug	Cylinder Specific
2	Shell	Cylinder Specific
3	Sidebar	CP-084X71
4	Sidebar Springs	CP-030018
5	Plug Retainer Ring	CP-021490
6	Cam	CT-Z51
7	Thumbturn Retaining Clip	CP-020031
8	Actuator	CP-100111
9	Actuator Spring	CP-030025
10	Actuator Pilot	CP-280261
11	Pilot Spring	CP-030024
12	Standard Round "SR" Thumbturn	CP-285961
13	Decorative "RD" Thumbturn	CP-285901
14	Thumbturn Shaft - 6 Pin	CP-240761-600
15	Thumbturn Allen Set Screw #6-32 x 3/16" Knurled Cup Point	CP-012411-040
16	Lever "RL" Thumbturn	CP-285931
17	Thumbturn Shaft - 5 Pin	CP-240761-500
18	Low Profile "LP" Thumbturn	CP-285991
19	Thumbturn Retaining Pin	TP-F10-1T
20	Thumbturn Retaining Pin Spring	CP-030001
21	Thumbturn Retaining Pin Allen Set Screw #8-32 x 1/4"	CP-011013-040
22	Slider (varies related to keyway)	CP-084591
23	Slider Spring	CP-030910
24	Spade Thumbturn (Pictured on page 179 "Special Order") "SP"	CP-286051
25	Crescent Thumbturn (Pictured on page 179 "Special Order") "CR"	CP-286021

### Medeco Premium High Security Euro Half Profile Cylinder



Item	Description	Part Number
1	Key	As Required
2	Plug	Cylinder Specific
3	Shell	Cylinder Specific
4	Sidebar Springs	CP-030018
5	Sidebar	CP-084X71
6	Cam Spring	CP-030860
7	Actuator	CP-220090
8	Plug Retainer	CP-021490
9	Cam	CT-Z88
10	Bottom Pins	As Required
11	Top Pins	As Required
12	Springs (Phosphor Bronze)	CP-030001
13	Pin Chamber Allen Set Screws #8-32 x 1/4"	CP-011013-040
14	Slider – (varies related to keyway)	CP-084591
15	Slider Spring	CP-030910

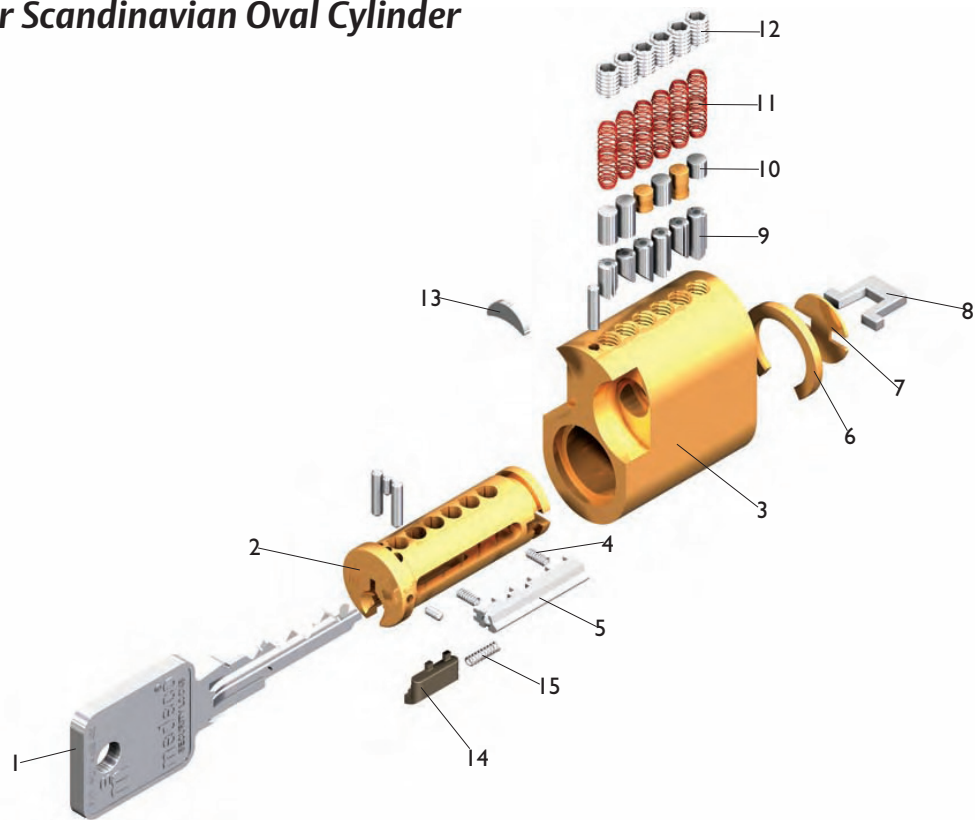
### Medeco Premium High Security Exterior Scandinavian Oval Cylinder



Item	Description	Part Number
1	Key	As Required
2	Plug	Cylinder Specific
3	Shell	Cylinder Specific
4	Sidebar Springs	CP-030018
5	Sidebar, 6 Pin	CP-084671
6	Plug Retainer	CP-021040
7	Plate	CP-180830
8	Tailpiece	CT-Y76
9	Bottom Pins	As Required
10	Top Pins	As Required
11	Springs (Phosphor Bronze)	CP-030001
12	Pin Chamber Allen Set Screws #8-32 x 1/4"	CP-0111013-040
13	Crescent Steel Insert	CP-180011
14	Slider – (varies related to keyway)	CP-084591
15	Slider Spring	CP-030910

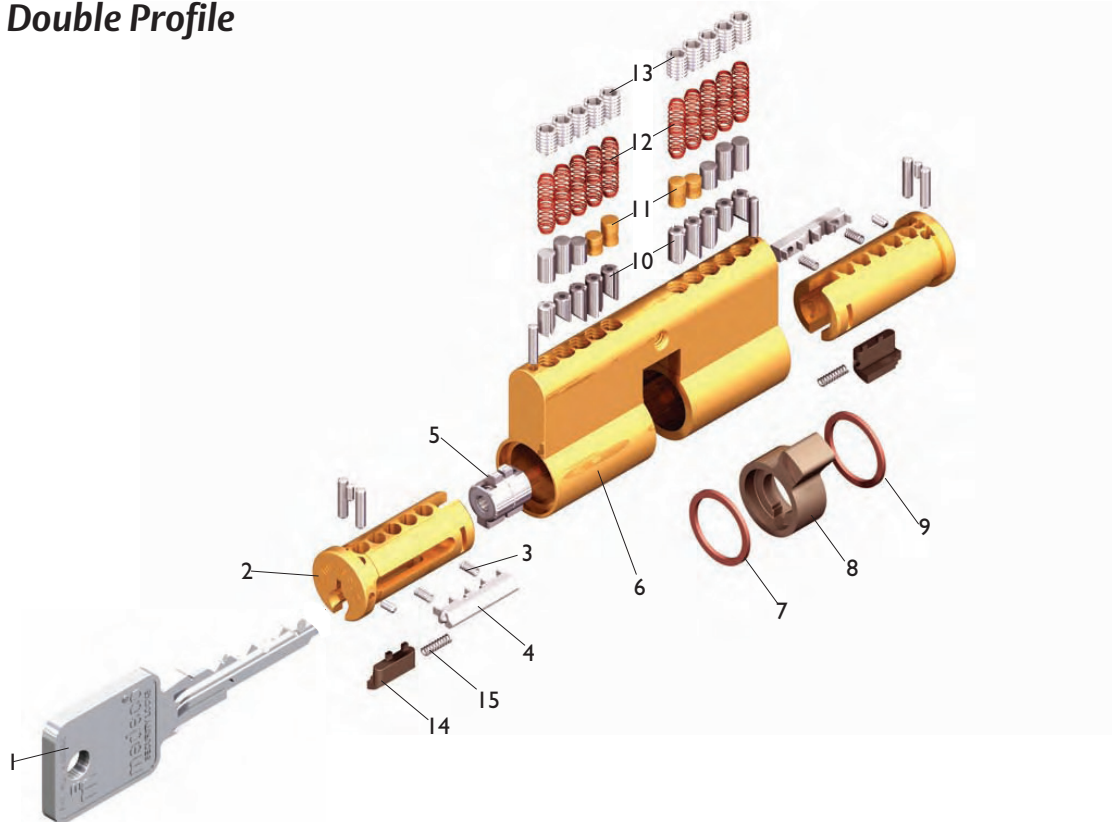


### Medeco Premium High Security Interior Scandinavian Oval Cylinder



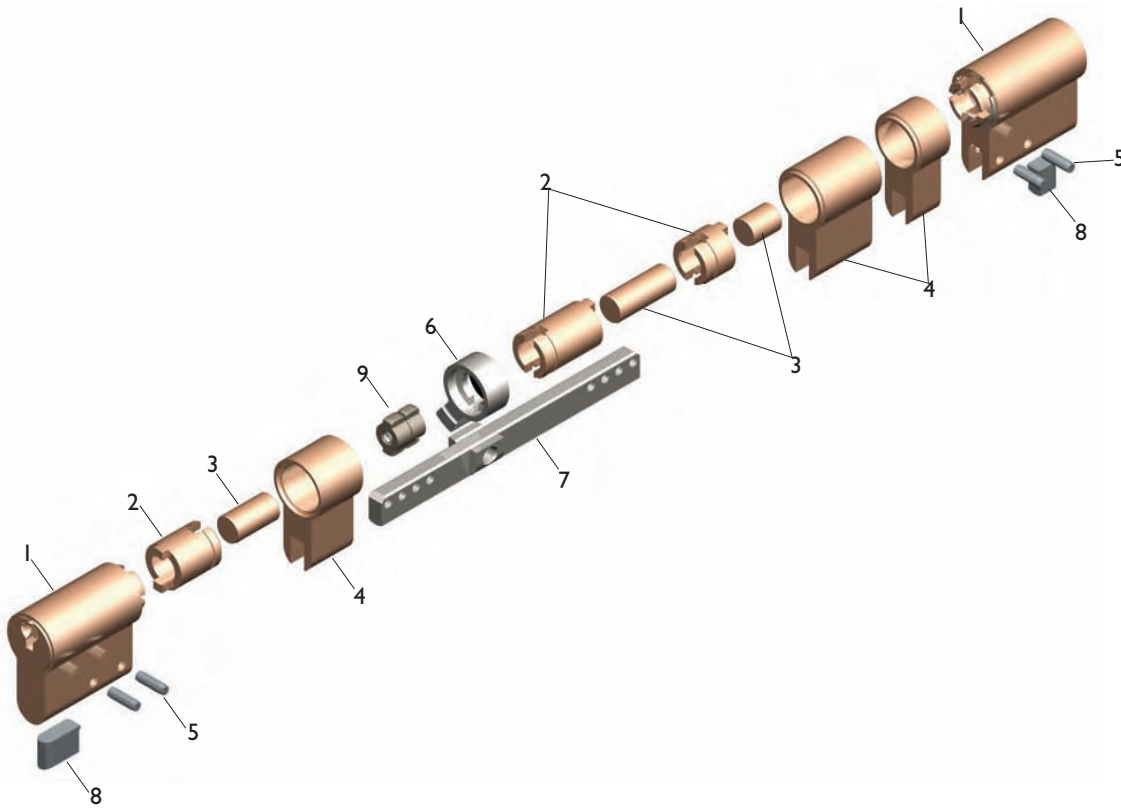
Item	Description	Part Number
1	Key	As Required
2	Plug	Cylinder Specific
3	Shell	Cylinder Specific
4	Sidebar Springs	CP-030018
5	Sidebar, 6 Pin	CP-084671
6	Plug Retainer	CP-021040
7	Plate	CP-180830
8	Tailpiece	CT-Y76
9	Bottom Pins	As Required
10	Top Pins	As Required
11	Springs (Phosphor Bronze)	CP-030001
12	Pin Chamber Allen Set Screws #8-32 x 1/4"	CP-011013-040
13	Crescent Steel Inserts	CP-180011
14	Slider – (varies related to keyway)	CP-084591
15	Slider Spring	CP-030910

## Medeco Premium High Security Euro Double Profile



Item	Description	Part Number
1	Key	As Required
2	Plug	Cylinder Specific
3	Sidebar Springs	CP-030018
4	Sidebar, 5 Pin	CP-084571
5	Clutch	CP-220071
6	Shell	Cylinder Specific
7	Plug Retainer	CP-021490
8	Cam	CT-Z50
9	Plug Retainer	CP-021490
10	Bottom Pins	As Required
11	Top Pins	As Required
12	Springs (Phosphor Bronze)	CP-030001
13	Pin Chamber Allen Set Screws #8-32 x 1/4"	CP-0110113-040
14	Slider - (varies related to keyway)	CP-084591
15	Slider Spring	CP-030910

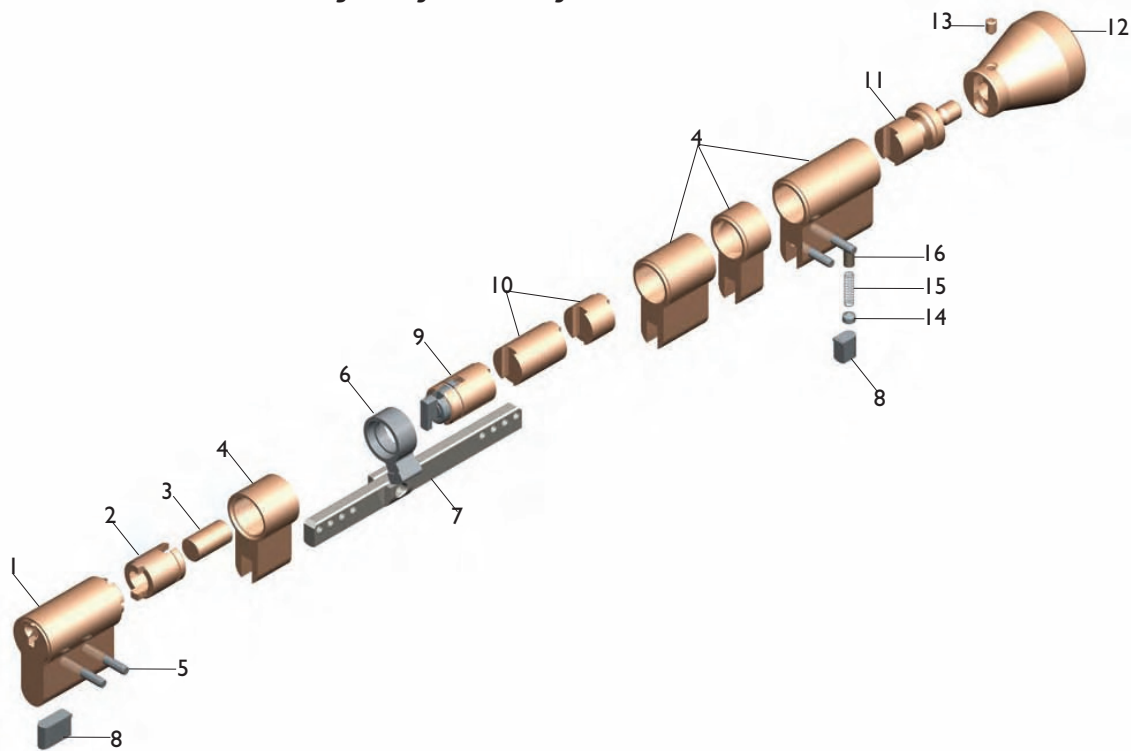
**Medeco Premium High Security  
EuroLine Modular Profile Cylinder System**



**Modular Profile Double Cylinder**

Item	Description	Part Number
1	Cylinder Module (5 or 6 Pin)	232201X 30X
2	Outer Plug Extension - 10mm – 25mm extensions available	CP-200751
3	Inner Plug Extension - 5mm – 25mm extensions available	CP-200761
4	Brass Shell Extension - finish required	CP-200771
5	Groove Pins	CP-063220
6	Cam	CT-Z50
7	Connecting Bar - requires length designation	CP-200801
8	Bar Filler	CP-160661
9	Clutch Assembly	CP-220071

### Medeco Premium High Security EuroLine Modular Profile Cylinder System



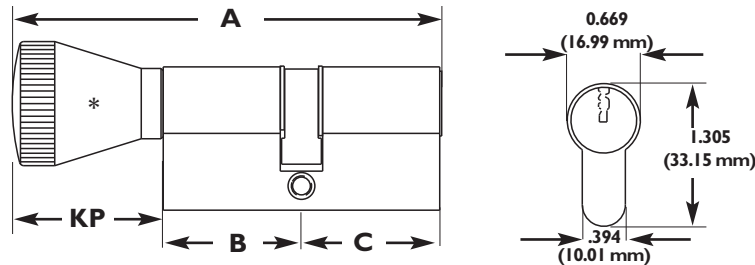
#### Modular Profile Single Cylinder with Thumbturn

Item	Description	Part Number
1	Thumbturn Cylinder Module (5 or 6 pin), requires knob selection	23X220XX-300
2	Outer Plug Extension, 10-25 mm extension	CP-200751
3	Inner Plug Extension, 5-25 mm extension	CP-200761
4	Brass Shell Extension, Finish required	CP-200771
5	Groove Pins	CP-063220
6	Cam	CP-Z51
7	Connecting Bar	CP-200801
8	Bar Filler	CP-160661
9	Thumbturn Actuator Cartridge	CP-220131
10	Thumbturn Cartridge Extension, 5-25 mm extension	CP-200781
11	Thumbturn Shaft – Modular Only	CP-240771-XP
12	Thumbturn Knob	See Page 180
13	Thumbturn Set Screw	CP-011013-020
14	Thumbturn Retaining Set Screw 8- 32 x 1/4"	CP-011013-040
15	Thumbturn Retaining Pin Spring	CP-030001
16	Thumbturn Retaining Pin	TP-F10-IT

**Euro Profile Technical Information**

A = Total Length	C = Exterior Length
B = Interior Length	KP = Knob to Face

**EURO PROFILE SINGLE CYLINDER WITH THUMBTURN**



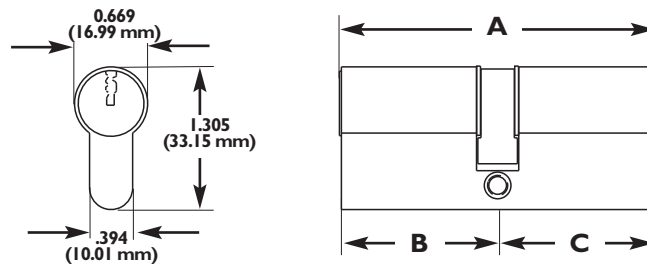
**Euro Profile Single Cylinder with Thumbturn**

Part#	A	B	C	KP
2313005 X00 *	99.04	31.98	31.98	35.08
2313035 X00	81.44	31.98	31.98	17.48
2313045 X00	83.09	31.98	31.98	19.13
2313055 X00	84.1	31.98	31.98	20.14
2313006 X00 *	107.68	36.3	36.3	35.08
2313036 X00	90.08	36.3	36.3	17.48
2313046 X00	91.73	36.3	36.3	19.13
2313056 X00	92.74	36.3	36.3	20.14
2313065 X00 (490264)	84.3	31.98	31.98	20.35
2313066 X00 (490291)	92.94	36.3	36.3	20.35

**Euro Profile Technical Information**

A = Total Length	C = Exterior Length
B = Interior Length	

**EURO PROFILE DOUBLE CYLINDER**

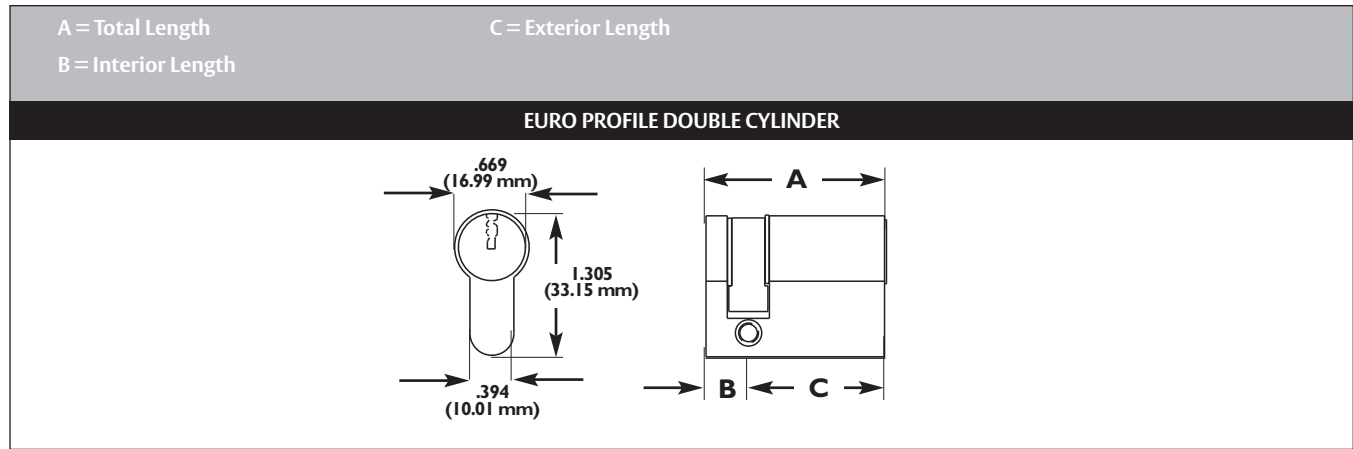


**Euro Profile Double Cylinder with Thumbturn**

Part#	A	B	C
2313025 X00	63.96	31.98	31.98
2313026 X00	72.59	36.3	36.3
2313025 X01	68.96	31.98	36.98
2313025 X02	73.96	31.98	41.99
2313025 X11	73.96	36.98	36.98
2313025 X12	78.97	36.98	41.99
2313026 X01	77.6	36.3	41.3
2313026 X02	82.6	36.3	46.3
2313026 X12	87.6	41.3	46.3

All table measurements in millimeters.

**Euro Profile Technical Information**

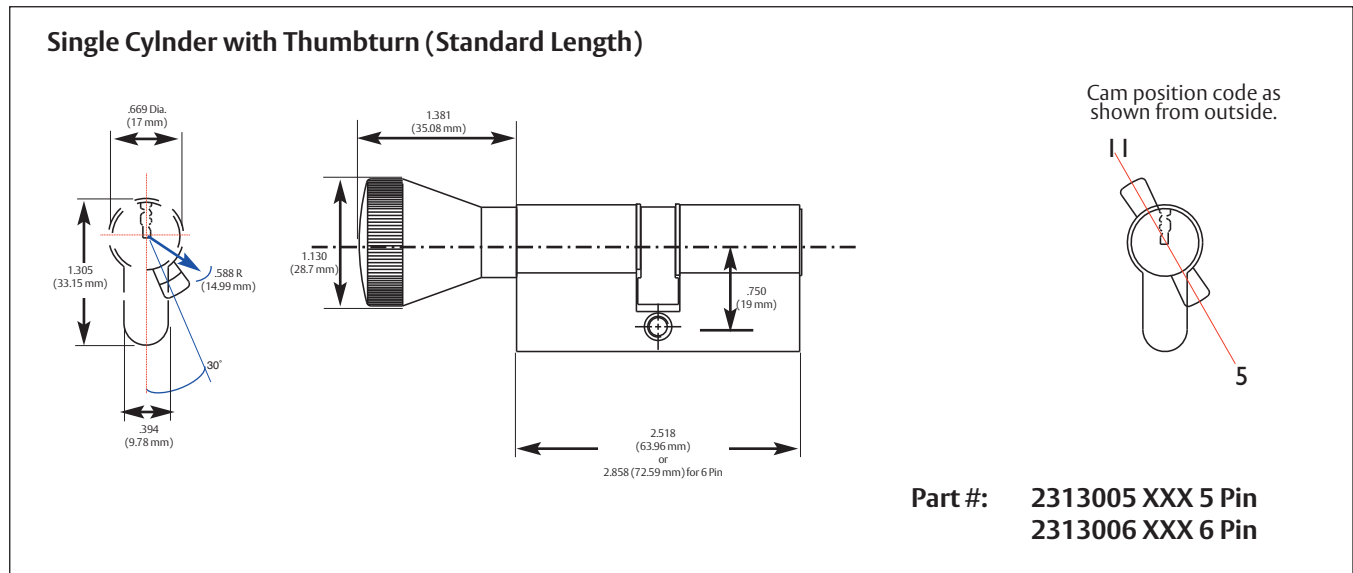


**Euro Profile Single Cylinder with Thumbturn**

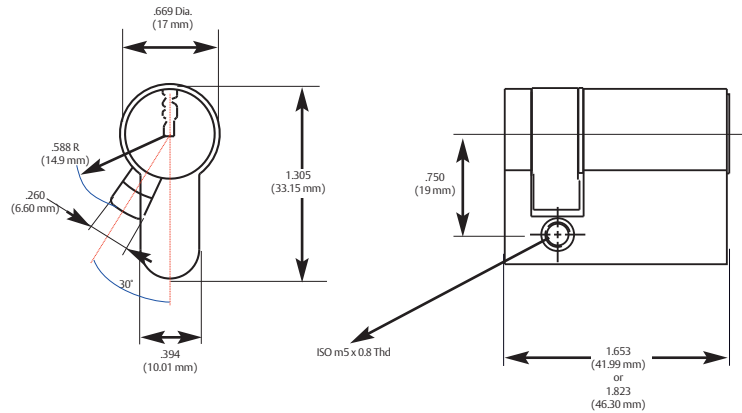
Part#	A	B	C
2313015 800	41.99	10.01	31.98
2313016 800	46.4	10.01	36.3
2313015 801	46.99	10.01	36.98
2313016 801	51.31	10.01	41.3

All table measurements in millimeters.

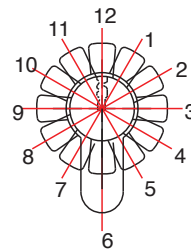
**Euro Profile Technical Information**



### Half Cylinder (Standard Length)



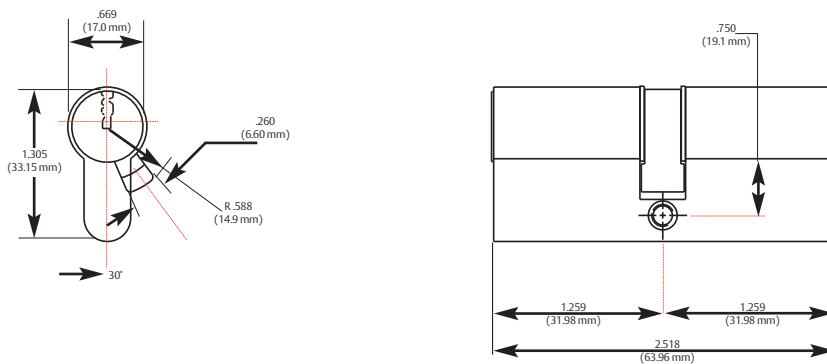
Cam position code as shown from outside.



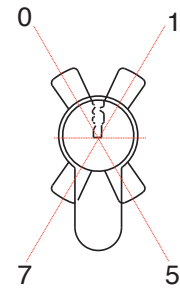
Multi-indexing cam with 12 positions. Cam is set at 5 o'clock from the factory

**Part #:** 2313015 8XX 5 Pin  
2313016 8XX 6 Pin

### Double Cylinder 5 Pin (Standard and Extended)

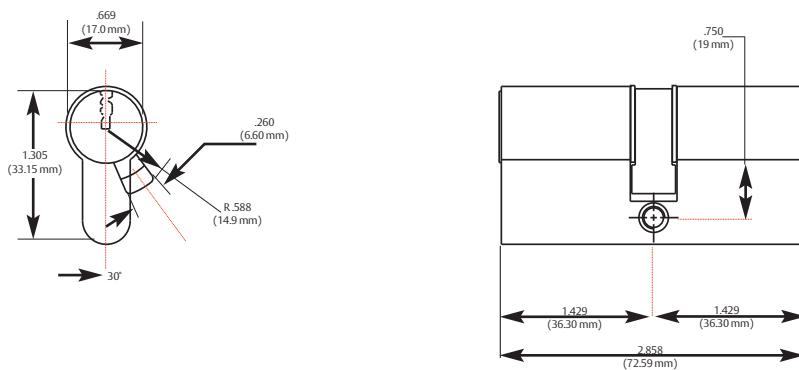


Cam position code as shown from outside.

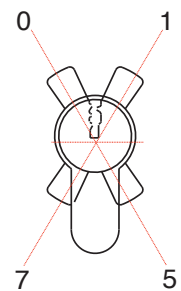


**Part #:** 2313025 X00 5 Pin  
In 5mm steps up to 45mm

### Double Cylinder 6 Pin (Standard and Extended)



Cam position code as shown from outside.



**Part #:** 2313026 X00 6 Pin  
In 5mm steps up to 45mm

### Union Single with Thumbturn

Cam position code as shown from outside.

Part #: **2304005 X00 5 Pin**  
**2304006 X00 6 Pin**

### Union Half Cylinder

Cam position code as shown from outside.

Part #: **2304015 X00 5 Pin**  
**2304016 X00 6 Pin**

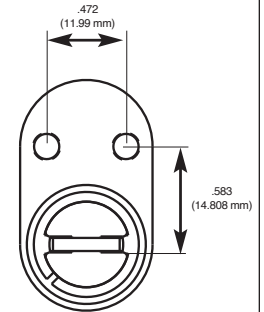
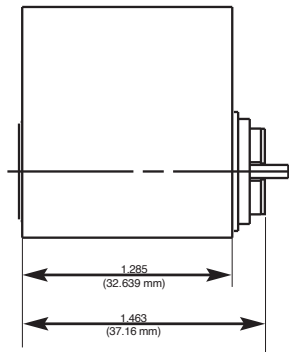
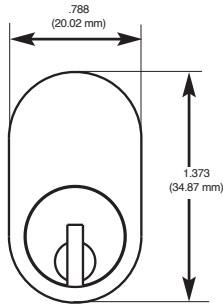
### Union Double Cylinder

Cam position code as shown from outside.

Part #: **2304025 X00 5 Pin**  
**2304026 X00 6 Pin**



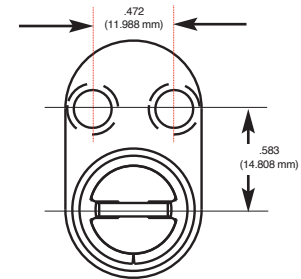
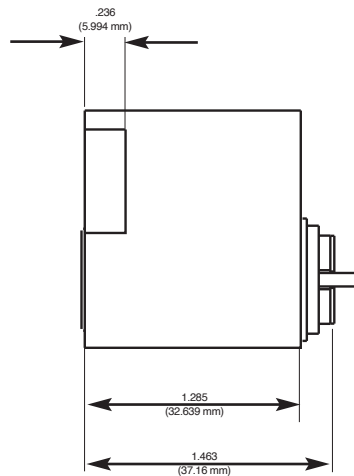
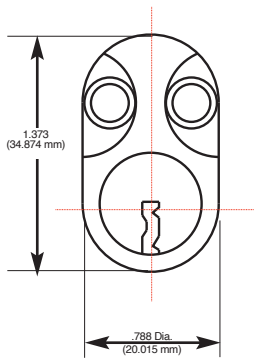
**Scandinavian Oval – Exterior for ASSA/Ruko®**



Tailpiece CT-Y76

Part #: 2305016 6 Pin

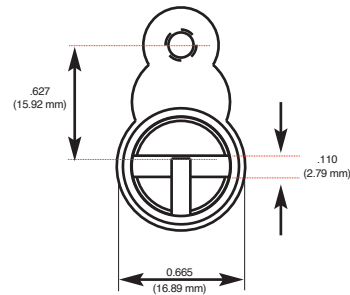
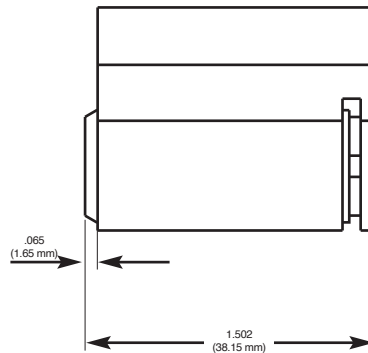
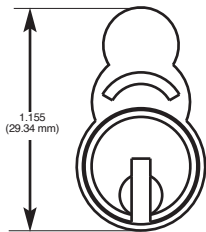
**Scandinavian Oval – Interior for ASSA/Ruko®**



Tailpiece CT-Y76

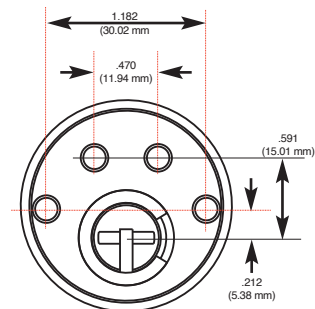
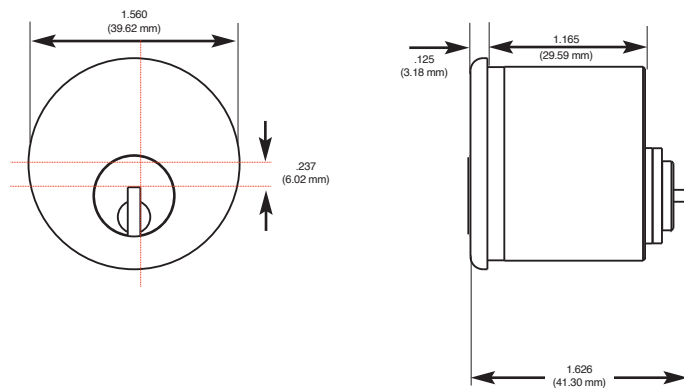
Part #: 2306016 6 Pin

**Scandinavian Padlock – for ASSA/Ruko®**



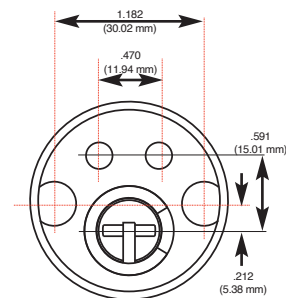
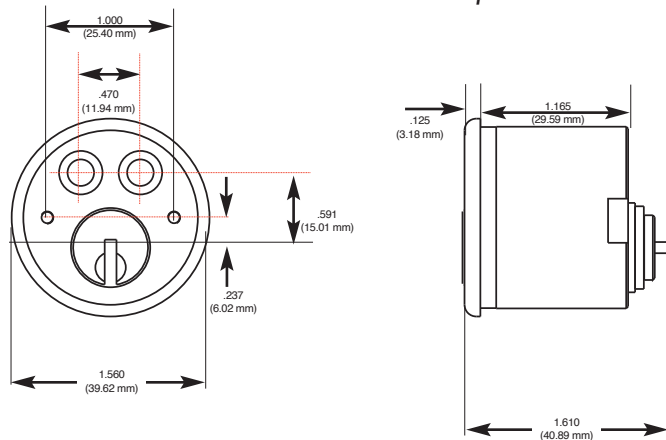
Part #: 2308016X 6 Pin

**Scandinavian Round Exterior – for ASSA/Ruko®**



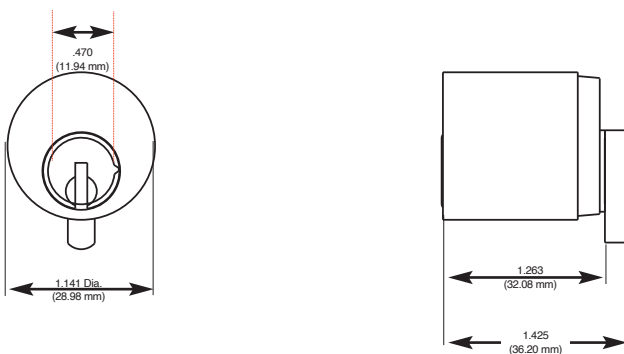
**Part #: 2309016 6 Pin**

**Scandinavian Round Interior – for ASSA/Ruko®**

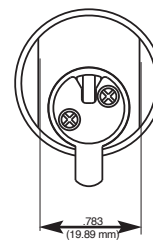


**Part #: 2310016 6 Pin**

**Danish Round – Exterior for Ruko®**

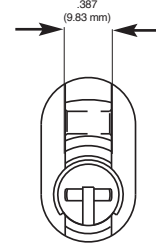
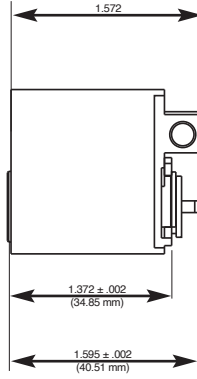
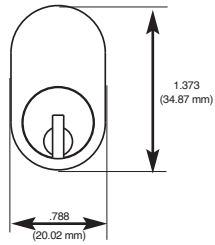


Special pinning required due to chamber height



**Part #: 2301016 6 Pin**

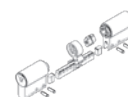
Norwegian Single Cylinder for Trio Ving®



Part #: 23070165 6 Pin

**Euroline Modular Profile Kit**

Description	Part Number	Price
Euroline Modular Profile Kit - Danish	940243	
Medeco XT Half Profile Modular Kit	940279	
Euro Single/Double Thumbturn Kit Mechanical/Electric Available in Medeco XT or M <sup>3</sup> CLIQ	940219	
Export XT Demo Kit (Programmed to STOCK)	94-0287	
Upgrade Key Assembly Solo	94-0288	
Upgrade Key Assembly Web	94-0289	
Medeco XT Cam for Doubles – Not included in kit	CT-Z98	

**Euroline Modular Cylinder Assembled**

Description	Part Number	M4	M3	X4
5 Pin Double Cylinder	2323025 X00			
6 Pin Double Cylinder	2323026 X00			
5 Pin Double Thumbturn/Cylinder	23230X5 X00			
6 Pin Double Thumbturn/Cylinder	23230X6 X00			
7 Pin X4 Euro Assembly ext. 0mm Thumbturn	23230X7 500			
7 Pin X4 Euro Assembly ext. 5mm Thumbturn	23230X7 511			

**Euroline Modular Intelligent Key Assembled**

Description	Part Number	Price
M <sup>3</sup> CLIQ, Thumbturn/Cylinder, 36/36mm	23230X6 X00 S	
M <sup>3</sup> CLIQ Double, 36/36mm	23230E6 X00 S	
Medeco XT Single Cylinder Half Euro	232301S 800 G	
Medeco XT Single Cylinder Half Euro – ext. 5mm	232301S 801 G	
Medeco XT Single Cylinder Half Euro Assembled (True 30mm)	232301ST 800 G	
Medeco XT Single Cylinder Euro Thumbturn 30/30mm Assembled	23230XS X00 G	
Medeco XT Single Cylinder Euro Thumbturn 35/35mm Assembled	23230XS X11 G	
Medeco XT Double Euro Mechanical/eCyl 30/30mm Assembled	23230E5 X00 G	
Medeco XT Double Euro Mechanical/eCyl 35/35mm Assembled	23230E5 X11 G	
Special Pin Kit for Biaxial/Medeco <sup>3</sup> CLIQ Pinning	.KW5401	

**EuroLine Profile Cylinder Modules**

Description	Part Number	M4	M3	X4
5 Pin Cylinder	2322015 300			
5 Pin Cylinder + 5mm	2322015 301			
6 Pin Cylinder	2322016 300			
6 Pin Cylinder + 5mm	2322016 301			
Medeco X4 Standard 7 Pin Cylinder (35.59mm)	2322017 300 N			
Medeco X4 7 Pin + 5mm Cylinder (40.59mm)	2322017 301 N			

Note: Pinned Modules include one cut key in the price.

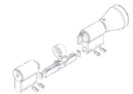
(P) = Pinned (combined)

(S) = Sub-assembled (uncombined)

Surcharges for Master Keying, Custom Coining and Custom Stamping apply, see page 195.  
Refer to the XT and CLIQ Intelligent Key sections for format availability and pricing.

**Euroline Profile Medeco XT Modules**

Description	Part Number	Price
Medeco XT 30mm Single Cylinder Half Euro	232201S 300 G	
Medeco XT 35mm Single Cylinder Half Euro	232201S 301 G	
Medeco XT 40mm-85mm Single Cylinder Half Euro	232201S 302 G	
Medeco XT 30mm Single Cylinder Thumbturn	232202S 300 G	
Medeco XT 35mm Single Cylinder Thumbturn	232202S 301 G	
Medeco XT 40mm-85mm Single Cylinder Thumbturn	232202S 302 G	
Medeco XT 30mm Double Cylinder	232212SX 300 G	
Medeco XT 35 mm Double Cylinder	232212SX 301 G	
Medeco XT 40mm-85mm Double Cylinder	232222SX 302 G	

**Euroline Profile Medeco<sup>3</sup> CLIQ Modules**

Description	Part Number	Price
M <sup>3</sup> CLIQ, 6 pin Module	2322016 300 S	
M <sup>3</sup> CLIQ 6 pin + 5mm	2322016 301 S	

**EuroLine Profile Thumbturn Modules**

Description	Part Number	Price
5 Pin Thumbturn	23220X5 300	
6 Pin Thumbturn	23220X6 300	
5 Pin X4 Thumbturn Module	23220X5 302	

**Euroline Profile Medeco XT Thumbturn Modules**

Description	Part Number	Price
Euro Thumbturn Module - 30mm	23220XS 300	

To order the Euro Thumbturn Module 35mm, you must add the shell ext. CP20071-05 and cart ext. CP-200781-05 to the 30mm Module

**Special Cylinders**

Description	Part Number	Price
Lockwood Oval retrofit AUS 570 Style	230301S G	
KIK AUS 530 Style	201006 G	
3-Tailpieces – For Australia Package	94-0283	
Medeco XT Ruko Oval	230501S G	
Medeco XT AUS 8221 PD Style	20112B1 G	

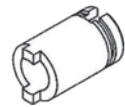
(P) = Pinned (combined)

(S) = Sub-assembled (uncombined)

Surcharges for Master Keying, Custom Coining and Custom Stamping apply, see page 195.  
Refer to the XT and CLIQ Intelligent Key sections for format availability and pricing.

**Plug Extensions – Outer**

\*Quantities shown in parentheses below are included in the 94-0219 Euroline modular profile kit listed above. Additional items may be ordered individually.



Description	Part Number	Price
10mm Kit Qty (20)	CP-200751-10	
15mm Kit Qty (10)	CP-200751-15	
20mm Kit Qty (5)	CP-200751-20	
25mm Kit Qty (5)	CP-200751-25	
30mm	CP-200751-30	
40mm	CP-200751-40	
45mm	CP-200751-45	
50mm	CP-200751-50	
55mm	CP-200751-55	
60mm	CP-200751-60	
65mm	CP-200751-65	
70mm	CP-200751-70	
75mm	CP-200751-75	
80mm	CP-200751-80	
85mm	CP-200751-85	
90mm	CP-200751-90	

**Plug Extensions – Inner**

Description	Part Number	Price
5mm Kit Qty (20)	CP-200761-05	
10mm Kit Qty (20)	CP-200761-10	
15mm Kit Qty (10)	CP-200761-15	
20mm Kit Qty (5)	CP-200761-20	
25mm Kit Qty (5)	CP-200761-25	
30mm	CP-200761-30	
40mm	CP-200761-40	
45mm	CP-200761-45	
50mm	CP-200761-50	
55mm	CP-200761-55	
60mm	CP-200761-60	
65mm	CP-200761-65	
70mm	CP-200761-70	
75mm	CP-200761-75	
80mm	CP-200761-80	
85mm	CP-200761-85	
90mm	CP-200761-90	

(P) = Pinned (combined)

(S) = Sub-assembled (uncombined)

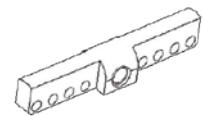
Surcharges for Master Keying, Custom Coining and Custom Stamping apply, see page 195.  
Refer to the XT and CLIQ Intelligent Key sections for format availability and pricing.

**Plug Extensions - Double EAC/EAC**

Description	Part Number	Price
10mm	CP-200851-10	
15mm	CP-200851-15	
20mm	CP-200851-20	
25mm	CP-200851-25	
30mm	CP-200851-30	
40mm	CP-200851-40	
45mm	CP-200851-45	
50mm	CP-200851-50	
55mm	CP-200851-55	
60mm	CP-200851-60	
65mm	CP-200851-65	
70mm	CP-200851-70	
75mm	CP-200851-75	
80mm	CP-200851-80	
85mm	CP-200851-85	
90mm	CP-200851-90	

**Brass Shell Extensions**

Description	Part Number	Price
5mm Kit Qty (20)	CP-200771-05	
10mm Kit Qty (20)	CP-200771-10	
15mm Kit Qty (10)	CP-200771-15	
20mm Kit Qty (5)	CP-200771-20	
25mm Kit Qty (5)	CP-200771-25	

**Connecting Bar**

Description	Part Number	Price
5mm Kit Qty (15)	CP-200801-00	
10mm Kit Qty (5)	CP-200801-02	
20mm Kit Qty (5)	CP-200801-04	
30mm Kit Qty (5)	CP-200801-06	
40mm Kit Qty (1)	CP-200801-08	
50mm Kit Qty (1)	CP-200801-0A	
10/10mm Kit Qty (5)	CP-200801-22	
10/20mm Kit Qty (5)	CP-200801-24	
10/30mm Kit Qty (3)	CP-200801-26	
10/40mm Kit Qty (1)	CP-200801-28	
10/50mm Kit Qty (1)	CP-200801-2A	
20/20mm Kit Qty (3)	CP-200801-44	
20/30mm Kit Qty (1)	CP-200801-46	
20/40mm Kit Qty (1)	CP-200801-48	
20/50mm Kit Qty (1)	CP-200801-4A	
30/30mm Kit Qty (1)	CP-200801-66	
30/40mm Kit Qty (1)	CP-200801-68	
30/50mm Kit Qty (1)	CP-200801-6A	
40/40mm Kit Qty (1)	CP-200801-88	
40/50mm Kit Qty (1)	CP-200801-8A	
50/50mm Kit Qty (1)	CP-200801-AA	

(P) = Pinned (combined)

(S) = Sub-assembled (uncombined)

Surcharges for Master Keying, Custom Coining and Custom Stamping apply, see page 195.  
Refer to the XT and CLIQ Intelligent Key sections for format availability and pricing.



### Modular Thumbturn Shaft

Description	Part Number	Price
5 Pin Kit Qty (2)	CP-240771-5P	
6 Pin Kit Qty (2)	CP-240771-6P	



### Modular Service Tools

Description	Part Number	Price
Modular Assembly Block Kit Qty (1)	94-0208	
Pinning Block Kit Qty (2)	94-0203	
Pinning Block Medeco X4	94-0285	
Capping Tool Kit Qty (2)	94-0207	
Small flat blade screwdriver Kit Qty (1)	94-0221	
Removing Punch, 2.3 mm Kit Qty (1)	94-0222	
Installing punch, 6.35 mm Kit Qty (1)	94-0223	
Allen Wrench, 1.588 mm Kit Qty (1)	CP-280330	

### Miscellaneous Components

Description	Part Number	Price
Groove Pin Kit Qty (200)	CP-063220	
Clutch Piece Assembly Kit Qty (20)	CP-220071	
5 Pin Cover Kit Qty (100)	CP-170730-5	
6 Pin Cover Kit Qty (100)	CP-170730-6	
Double Cam Kit Qty (20)	CT-Z50	
Thumbturn Cam Kit Qty (20)	CT-Z51	

(P) = Pinned (combined)

(S) = Sub-assembled (uncombined)







Surcharges for Master Keying, Custom Coining and Custom Stamping apply, see page 195.  
Refer to the XT and CLIQ Intelligent Key sections for format availability and pricing.



**Top Pins**

Description	Part Number
1 top pin Kit Qty (200)	TP-F10-4T (.180")
2 top pin Kit Qty (200)	TP-F10-5T (.150")
3 top pin Kit Qty (200)	TP-H10-9W (.135")
4 top pin Kit Qty (200)	TP-F10-4W-6T (.120")
5 top pin Kit Qty (200)	TP-F10-3W (.090")
6 top pin Kit qty (200)	TP-F10-2W (.060")

**Thumbturn Knobs**

Description	Part Number	Price
 Decorative "RD" 4 CP-285901		
 Lever "RL" 5 CP-285931		
 Round "SR" 0 CP-285961		
 Low Profile "LP" 3 CP-285991		
 Crescent "CR" 6 CP-286021		
 Spade "SP" 7 CP-286051		

Finish required.

**Thumbturn Assembly - Shaft, Knob, Set Screw - 5 pin**

Description	Part Number	Price
Decorative	CP-285921-500	
Lever	CP-285951-500	
Standard Round	CP-285981-500	
Low Profile	CP-286011-500	
Crescent	CP-286041-500	
Spade	CP-286071-500	
Less TT Knob	CP-240761-500	

(P) = Pinned (combined)

(S) = Sub-assembled (uncombined)

Surcharges for Master Keying, Custom Coining and Custom Stamping apply, see page 195.  
Refer to the XT and CLIQ Intelligent Key sections for format availability and pricing.

**Medeco XT Half Cylinder Connecting Bar**

\*Quantities shown in parentheses below are included in the 94-0279 Euroline half cylinder kit listed above. Additional items may be ordered individually.



Description	Part Number	Price
40, 45mm Kit Qty (6)	CP-200801-12	
50, 55mm Kit Qty (5)	CP-200801-14	
60, 65mm Kit Qty (3)	CP-200801-16	
70, 75mm Kit Qty (3)	CP-200801-18	
80, 85 mm Kit Qty (3)	CP-200801-1A	

**Plug Extensions Outer for 94-0279**

Description	Part Number	Price
10mm Kit Qty (20)	CP-200751-10	
15mm Kit Qty (15)	CP-200751-15	
20mm Kit Qty (5)	CP-200751-20	
25mm Kit Qty (5)	CP-200751-25	

**Brass Shell Extensions for 94-0279**

Description	Part Number	Price
5mm Kit Qty (20)	CP-200771-05	
10mm Kit Qty (20)	CP-200771-10	
15mm Kit Qty (10)	CP-200771-15	
20mm Kit Qty (5)	CP-200771-20	
25mm Kit Qty (5)	CP-200771-25	

**Bar Filler (2 per Cylinder) for 94-0279**

Description	Part Number	Price
5 Pin, 0mm Kit Qty (20)	CP-160661-50	
5 Pin, 5mm Kit Qty (20)	CP-160661-55	

**Miscellaneous Components for 94-0279**

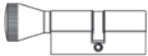

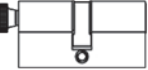
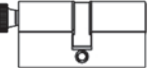
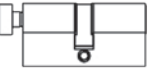
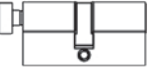

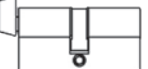

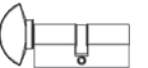
Description	Part Number	Price
Half Shell Backend Kit Qty (20)	CP-200830	
Actuator Spring Kit Qty (25)	CP-030860	
Indexable Actuator Kit Qty (20)	CP-220090	
Security Pin Kit Qty (25)	CP-060106	
Groove Pin Kit Qty (65)	CP-063220	
Indexable Cam	CT-Z88	

(P) = Pinned (combined)

(S) = Sub-assembled (uncombined)

Surcharges for Master Keying, Custom Coining and Custom Stamping apply, see page 195.  
Refer to the XT and CLIQ Intelligent Key sections for format availability and pricing.

## Euro Profile Single Cylinder with Thumbturn



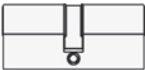
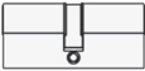
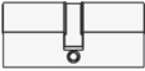




Description	Part Number	M4	M3
 5 Pin, Standard Round "SR" Thumbturn	2313005 X00 (P)		
	2313005 X00 (S)		
 6 Pin, Standard Round "SR" Thumbturn	2313006 X00 (P)		
	2313006 X00 (S)		
 5 Pin, Low Profile "LP" Thumbturn	2313035 X00 (P)		
	2313035 X00 (S)		
 6 Pin, Low Profile "LP" Thumbturn	2313036 X00 (P)		
	2313036 X00 (S)		
 5 Pin, Removable Decorative "RD" Thumbturn	2313045 X00 (P)		
	2313045 X00 (S)		
 6 Pin, Removable Decorative "RD" Thumbturn	2313046 X00 (P)		
	2313046 X00 (S)		
 5 Pin, Removable Lever "RL" Thumbturn	2313055 X00 (P)		
	2313055 X00 (S)		
 6 Pin, Removable Lever "RL" Thumbturn	2313056 X00 (P)		
	2313056 X00 (S)		
 5 Pin, Euro Crescent "CR" Thumbturn	2313065 X00 (P)		
	2313065 X00 (S)		
 6 Pin, Euro Crescent "CR" Thumbturn	2313066 X00 (P)		
	2313066 X00 (S)		

(P) = Pinned (combined)


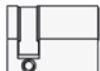
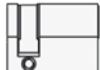
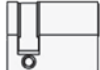
(S) = Sub-assembled (uncombined)

Surcharges for Master Keying, Custom Coining and Custom Stamping apply, see page 195.  
Refer to the XT and CLIQ Intelligent Key sections for format availability and pricing.

## Euro Profile Double Cylinder

Description	Part Number	M4	M3
 5 Pin, No Extension	2313025 X00 (P)		
	2313025 X00 (S)		
 5 Pin Extended, 5 mm Ext. Side (0mm/5mm)	2313025 X01 (P)		
	2313025 X01 (S)		
 5 Pin Extended, 10 mm Ext. Side (0mm/10mm)	2313025 X02 (P)		
	2313025 X02 (S)		
 5 Pin Extended, (5mm/5mm)	2313025 X11 (P)		
	2313025 X11 (S)		
 5 Pin Extended, (5mm/10mm)	2313025 X12 (P)		
	2313025 X12 (S)		
 6 Pin, No Extension	2313026 X00 (P)		
	2313026 X00 (S)		
 6 Pin Extended, 5mm Ext. Side (0 mm/5 mm)	2313026 X01 (P)		
	2313026 X01 (S)		
 6 Pin Extended, 10mm Ext. Side (0 mm/10 mm)	2313026 X02 (P)		
	2313026 X02 (S)		
 6 Pin Extended, (5mm/10mm)	2313026 X12 (P)		
	2313026 X12 (S)		

## Euro Profile Half Cylinder

Description	Part Number	M4	M3
 5 Pin with 12 Position Indexable Cam	2313015 800 (P)		
	2313015 800 (S)		
 5 Pin, Extended 5 mm with 12 Position Indexable Cam	2313015 801 (P)		
	2313015 801 (S)		
 6 Pin with 12 Position Indexable Cam	2313016 800 (P)		
	2313016 800 (S)		
 6 Pin, Extended 5 mm with 12 Position Indexable Cam	2313016 801 (P)		
	2313016 801 (S)		

(P) = Pinned (combined)

(S) = Sub-assembled (uncombined)

Surcharges for Master Keying, Custom Coining and Custom Stamping apply, see page 195.  
Refer to the XT and CLIQ Intelligent Key sections for format availability and pricing.

**Other International Cylinders**

Description	Part Number	M4	M3
Danish Round Mortise Cylinder	2301016 (P)		
	2301016 (S)		
Australian Oval - Less Cams and Pins	2303016A (S)		
5 Pin British Oval Single Cylinder with Thumbturn	2304005 (P)		
	2304005 (S)		
6 Pin British Oval Single Cylinder with Thumbturn	2304006 (P)		
	2304006 (S)		
5 Pin British Oval Half Cylinder	2304015 (P)		
	2304015 (S)		
6 Pin British Oval Half Cylinder	2304016 (P)		
	2304016 (S)		
5 Pin British Oval Double Cylinder	2304025 (P)		
	2304025 (S)		
6 Pin British Oval Double Cylinder	2304026 (P)		
	2304026 (S)		
Scandinavian Oval Exterior Cylinder	2305016 (P)		
	2305016 (S)		
Scandinavian Oval Interior Cylinder	2306016 (P)		
	2306016 (S)		
Norwegian Oval Shape Cylinder	23070165 (P)		
	23070165 (S)		
Scandinavian Snowman Cylinder	23080166 (P)		
	23080166 (S)		
Scandinavian Round Exterior Cylinder	2309016 (P)		
	2309016 (S)		
Scandinavian Round Interior Cylinder	2310016 (P)		
	2310016 (S)		
Italian Cylinder Inner Gate Lock, 3 Pin	2314003 (P)		
	2314003 (S)		
Italian Cylinder Exterior Gate Lock, 5 Pin	2315005 (P)		
	2315005 (S)		
Italian Roller Shutter 4 Pin	2316004 (P)		
	2316004 (S)		
Danish Cam Lock (for Ruko®) w/ 90° Stop	2320016 (P)		
	2320016 (S)		

(P) = Pinned (combined)

(S) = Sub-assembled (uncombined)

Surcharges for Master Keying, Custom Coining and Custom Stamping apply, see page 195.  
Refer to the XT and CLIQ Intelligent Key sections for format availability and pricing.

## Profile Components

Description	Part Number	Price
5 Pin Plug For Half Cylinder	12286	
5 Pin Double Cylinder Profile Plug	12286	
6 Pin Plug For Half Cylinder	12288	
6 Pin Double Cylinder Profile Plug	12288	
5 Pin Double Cylinder Profile Shell	13327	
6 Pin Double Cylinder Profile Shell	13346	
6 Pin Shell For Half Cylinder	13375	
Thumbturn Set Screw	CP-011013-020	
Profile Cylinder Set Screw, #8-32 x 1/4"	CP-011013-040	
Set Screw for "CR" Thumbturn	CP-012409-030	
Thumbturn Set Screw	CP-012411-030	
Set Screw For Removable Thumbturn	CP-012411-040	
Thumbturn Retaining Clip	CP-020031	
Cartridge Retainer	CP-020240	
Plug Retaining Clip - Old Style, C Clip	CP-021400	
Plug Retaining Clip - Continuous Ring	CP-021490	
Tumbler Spring	CP-030001	
Single Cylinder Profile Pilot Spring	CP-030024	
Single Cylinder Profile Thumbturn Actuator Spring	CP-030025	
Actuator Spring For Half Cylinder	CP-030860	
Snap Ring	CP-031030	
Single Cylinder Profile Actuator	CP-100111	
Double Cylinder Profile EAC/EAC Push Rod	CP-100761	
Double Cylinder Profile Clutch	CP-220071	
5 and 6 Pin Actuator For Half Cylinder	CP-220090	
Clutch Assembly, Emergency	CP-220120	
Double Cylinder Profile EAC/EAC Clutch	CP-220201	
Double Cylinder Profile Gear Cam	CP-230081	
Thumbturn Cylinder Profile Gear Cam	CP-230091	
Single Cylinder Profile Thumbturn Actuator Pilot	CP-280261	
Standard Round "SR" Thumbturn Assembly 5 Pin	CP-285981-500	
Low Profile "LP" Thumbturn Assembly 5 Pin	CP-286011-500	
Lever "RL" Thumbturn Assembly 5 Pin	CP-285951-500	
Crescent "CR" Thumbturn Assembly 5 Pin	CP-286041-500	
Decorative "RD" Thumbturn Assembly 5 Pin	CP-285921-500	
Decorative "RD" Thumbturn Only	CP-285901	
Lever "RL" Thumbturn Only	CP-285931	
Low Profile "SR" Thumbturn Only	CP-285961	
Low Profile "LP" Thumbturn Only	CP-285991	
Oval Int./Ext. Cylinder tailpiece	CT-Y76	
Cam, British Oval (Half/Double)	CT-Z26	
Cam, British Oval (Thumbturn)	CT-Z29	
Double Cylinder Profile Cam	CT-Z50	
Thumbturn Cylinder Profile Cam, Non Indexing	CT-Z51	
Indexing Cam For Half Cylinders	CT-Z88	
Cam, Medeco XT Double Profile Cyl	CT-Z98	
Double Cylinder Profile EAC/EAC Cam	CT-ZA2	

(P) = Pinned (combined)

(S) = Sub-assembled (uncombined)

Surcharges for Master Keying, Custom Coining and Custom Stamping apply, see page 195.  
Refer to the XT and CLIQ Intelligent Key sections for format availability and pricing.