

Intelligent Key Cabinet (IKC)

The Intelligent Key Cabinet is a complete, electronically-controlled, key management solution that can secure, distribute and audit the use of XT Keys, mechanical keys, or other assets. Only authorized users can gain access to the cabinet via the included biometric fingerprint reader or PIN code pad, or a combination of both. An optional access card reader is also available. IKC is available in configurations to store mechanical keys, XT electronic keys or a combination of both. As an essential addition to any Medeco XT Intelligent Key system, it locks XT keys in place and keeps them charged and ready for use. The IKC can improve employee efficiency and increase accountability which translates into a more secure facility with lower operating costs.



Benefits:

- **Accountability:** No more wondering who has checked out keys or for how long. Complete audit trail and reporting by user and key activity. User accountability reduces lost keys. Fewer lost keys leads to lower expenses and improved security.
- **Analytics:** Identify potential problems in removal and return patterns before they escalate. Complete reporting suite provides multiple reporting options to provide real-time data. Reports can be automatically generated and sent to multiple users by email. Custom reports can be configured and exported to Excel for added convenience.
- **Security:** Loose keys are vulnerable to being misplaced or stolen. Only authorized users are able to access the electronic key management system. Biometric Fingerprint, PIN, and/or Prox Card authentication (optional) allow access to the IKC for added security and control. The IKC supports dual authentication if desired. For added security, a digital photo capture of each login can be added.
- **Convenience:** Allow employees to retrieve keys quickly without waiting for a manager. Quick, easy-to-use web-based or locally hosted software shows what keys are in, what keys are out, and to whom they are issued. The IKC allows the return of any key to any location in the cabinet, and then learns the key's new location.
- **Productivity:** Eliminate time spent searching for, or replacing lost keys – always know who took which key, and when.
- **Efficiency:** Pair with a full XT solution to identify patterns and workflows to gain even greater efficiency and security. XT version cabinets charge and program keys while they are secured and stored, ensuring keys are always ready to go.

Features:

- Heavy-duty enclosure keeps keys safe and secure
- Distributes keys only to authorized users
- Admin notifications (email and SMS) for unreturned keys
- Available in 3 cabinet sizes. Cabinet storage capacities are 32, 64, 96, 128, 160, 192, 224, 256, and 288 (Max capacity for XT version is 64 per cabinet).
- Three versions available: XT, iFob, and Hybrid
- Locks XT keys in place and keeps them charged and ready for use. (XT version)
- Identifies XT key serial number (XT version)
- XT version integrates to XT Web Manager Enterprise
- Built-in 10" touchscreen and fingerprint reader
- Multi-factor verification/authentication includes biometric finger scan, PIN, and Prox Card.
- Audible and visual alarms to indicate trouble conditions
- Built-in camera for photo verification of removal or attempted removal.
- Comprehensive reporting & analytics
- Emergency Fob Release System
- Multi-System Networking
- Medeco high security mechanical lock for manual override
- Options (see page 69 for full list of options):
 - Mounting: Custom Stand - holds 1 or 2 Standard or Mini cabinets to securely hold the cabinets in place without having to mount them on a wall.
 - User authentication: A Multi-class reader is available for purchase or the customer can supply their own reader for installation. (A reader and test card must be provided to Medeco for testing before the cabinet is manufactured to ensure proper compatibility.)

Intelligent Key Cabinet (IKC)

Standard Cabinet

LCD touchscreen used for PIN code authentication, warning messages as well as PC troubleshooting

High security mortise cylinder for manual override

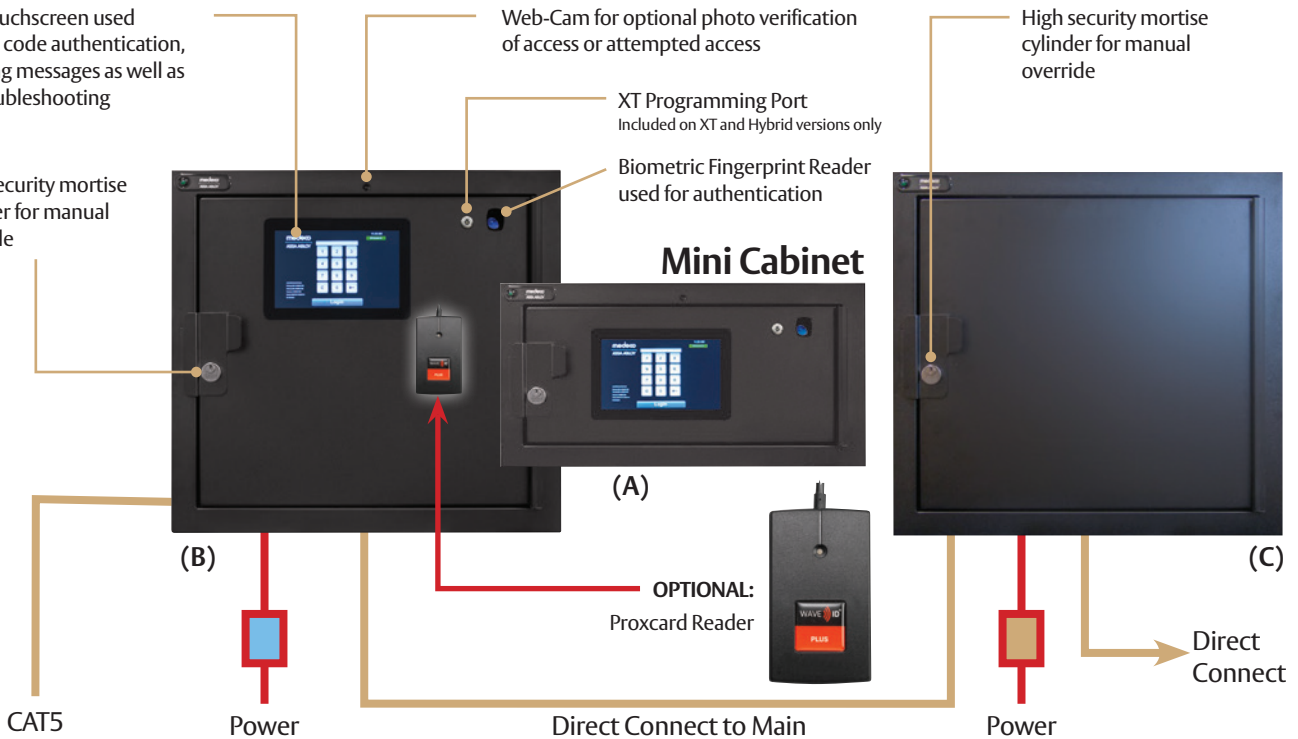
Web-Cam for optional photo verification of access or attempted access

XT Programming Port
Included on XT and Hybrid versions only

Biometric Fingerprint Reader
used for authentication

Add-On Cabinet

High security mortise cylinder for manual override



Scalability:

The IKC system can grow as business needs grow by adding on additional secondary cabinets from 32-288 port sizes for iFob units and in a combination of technologies (iFob or XT).

- Each system requires one 'Main' touchscreen cabinet
- Add additional cabinets as needs require
- System can be any combination of 32 or 64 port cabinets
- 32 port cabinets support either XT or iFob ports
- 64 port cabinets support either all XT, all iFob, or a combination of 32 XT plus 32 iFob.
- Main and Secondary boxes can be configured with same technology or different
- Up to 7 Add-on units maximum (512 keys) for every Main unit

Large Cabinet:

- 27" W x 46" H x 11" D
- Weight: 290 pounds
- May require wall reinforcement for mounting
- 160 to 288 key positions
- Available as iFob Main or Add-On Cabinet

Mini Cabinet (Image A):

- Main Cabinet (Image A) 27" W x 14.72" H x 12" D
- Can be stand alone or connected to Add-on cabinet
- Weight: 71 pounds
- Technology – Select All XT or All iFob
- Main and Add-on cabinets can be configured with same technology or different
- 32 key positions

Standard Cabinet (Image B):

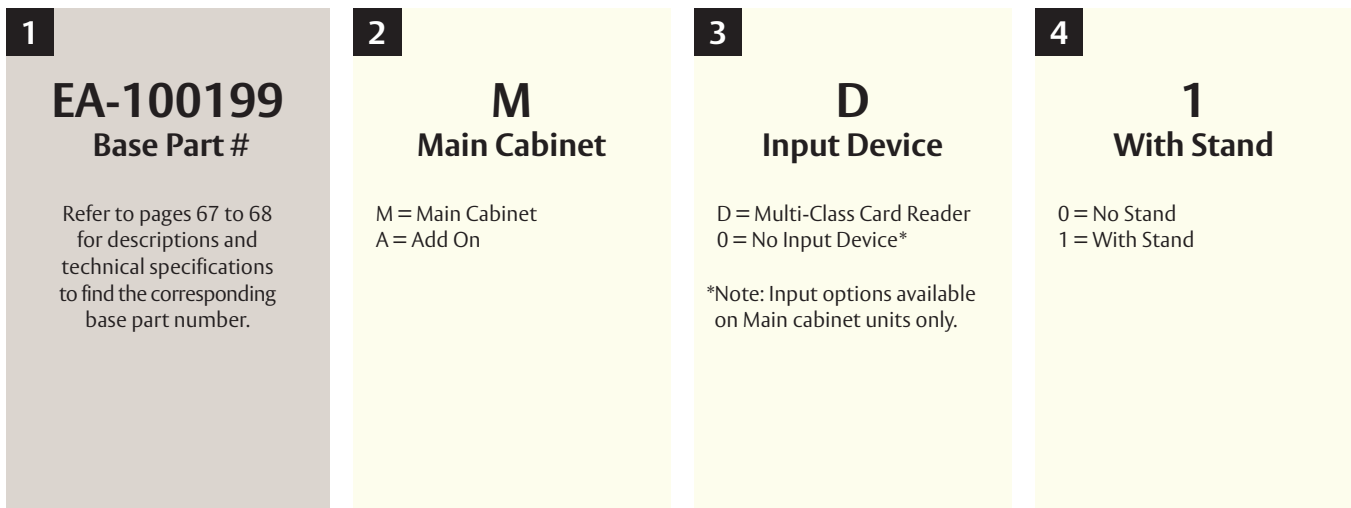
- Main Cabinet (Image B), 32 or 64 ports, 27" W x 25.25" H x 12" D
- Weight: 113 pounds
- Can be stand alone or connected to secondary cabinet
- Technology – Select All XT, All iFob, or 32 XT plus 32 iFob
- Main and Add-on cabinets can be configured with same technology or different
- 32-64 key positions – XT/hybrid
- 32-128 key positions – iFob

Add-on Cabinet (Image C):

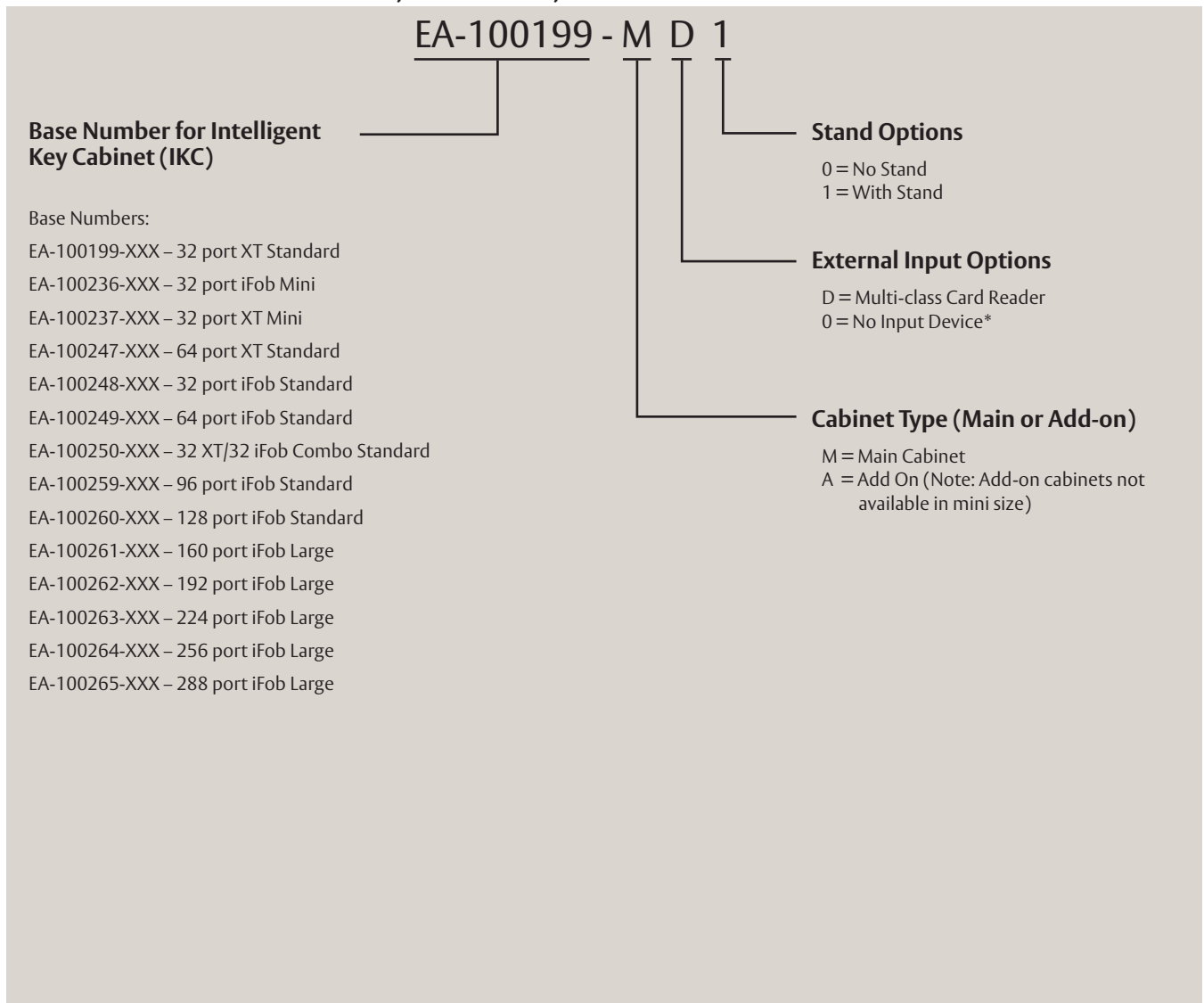
- Add-on Cabinet (Image C), 27" W x 25.25" H x 12" D
- Available with 32 or 64 ports
- 32 port option expandable to 64 with additional 32 port panel (sold separately)
- Must be connected to a Main cabinet

Intelligent Key Cabinet (IKC)

How to Order:



EXAMPLE: 32 PORT XT MAIN CABINET, INPUT DEVICE, WITH STAND



Intelligent Key Cabinet



Mini Cabinet



Standard Cabinet



Add-On Cabinet



Large Cabinet

IKC Software Options

Part Number	Description	Price
SW-500141	Medeco-hosted software for IKC, up to 5 cabinets, billed annually	
SW-500141-1	Self-hosted software for IKC on-site server installations, iFob version only, one-time purchase	
SW-500141-1R	Annual maintenance fee for IKC self-hosted software, billed annually	

Intelligent Key Cabinet

Part Number	Ports	Type (Standard, Mini, Large)	Description	Price
EA-100237-M00	32	XT - Mini	Mini-Cabinet, 32 port XT main, no input, without stand	
EA-100237-MD0	32	XT - Mini	Mini-Cabinet, 32 port XT main, Multi-class reader input, without stand	
EA-100237-M01	32	XT - Mini	Mini-Cabinet, 32 port XT main, no input, with stand	
EA-100237-MD1	32	XT - Mini	Mini-Cabinet, 32 port XT main, Multi-class reader input, with stand	
EA-100236-M00	32	iFob - Mini	Mini-Cabinet, 32 port iFob main, no input, without stand	
EA-100236-MD0	32	iFob - Mini	Mini-Cabinet, 32 port iFob main, Multi-class reader input, without stand	
EA-100236-M01	32	iFob - Mini	Mini-Cabinet, 32 port iFob main, no input, with stand	
EA-100236-MD1	32	iFob - Mini	Mini-Cabinet, 32 port iFob main, Multi-class reader input, with stand	
EA-100199-M00	32*	XT - Standard	32 port XT main cabinet, no input, no stand	
EA-100199-MD0	32*	XT - Standard	32 port XT main cabinet, Multi-class card reader input, no stand	
EA-100199-M01	32*	XT - Standard	32 port XT main cabinet, no input, with stand	
EA-100199-MD1	32*	XT - Standard	32 port XT main cabinet, Multi-class card reader input, with stand	
EA-100199-A00	32*	XT - Standard (add-on)	32 port XT add-on cabinet without stand	
EA-100199-A01	32*	XT - Standard (add-on)	32 port XT add-on cabinet with stand	
EA-100247-M00	64	XT - Standard	64 port XT main cabinet, no input, without stand	
EA-100247-MD0	64	XT - Standard	64 port XT main cabinet, Multi-class card reader input, without stand	
EA-100247-M01	64	XT - Standard	64 port XT main cabinet, no input, with stand	
EA-100247-MD1	64	XT - Standard	64 port XT main cabinet, Multi-class card reader input, with stand	
EA-100247-A00	64	XT - Standard (add-on)	64 port XT add-on cabinet without stand	
EA-100247-A01	64	XT - Standard (add-on)	64 port XT add-on cabinet with stand	
EA-100248-M00	32*	iFob - Standard	32 port iFob main cabinet, no input, without stand	
EA-100248-MD0	32*	iFob - Standard	32 port iFob main cabinet, Multi-class card reader input, without stand	
EA-100248-M01	32*	iFob - Standard	32 port iFob main cabinet, no input, with stand	
EA-100248-MD1	32*	iFob - Standard	32 port iFob main cabinet, Multi-class card reader input, with stand	
EA-100248-A00	32*	iFob - Standard (add-on)	32 port iFob add-on cabinet, without stand	
EA-100248-A01	32*	iFob - Standard (add-on)	32 port iFob add-on cabinet, with stand	
EA-100249-M00	64	iFob - Standard	64 port iFob main cabinet, no input, without stand	
EA-100249-MD0	64	iFob - Standard	64 port iFob main cabinet, Multi-class card reader input, without stand	
EA-100249-M01	64	iFob - Standard	64 port iFob main cabinet, no input, with stand	
EA-100249-MD1	64	iFob - Standard	64 port iFob main cabinet, Multi-class card reader input, with stand	
EA-100249-A00	64	iFob - Standard (add-on)	64 port iFob add-on cabinet, without stand	
EA-100249-A01	64	iFob - Standard (add-on)	64 port iFob add-on cabinet, with stand	
EA-100250-M00	32/32 COMBO	XT/iFob - Standard	64 port combo main cabinet, no input, without stand	
EA-100250-MD0	32/32 COMBO	XT/iFob - Standard	64 port combo main cabinet, Multi-class card reader input, without stand	
EA-100250-M01	32/32 COMBO	XT/iFob - Standard	64 port combo main cabinet, no input, with stand	
EA-100250-MD1	32/32 COMBO	XT/iFob - Standard	64 port combo main cabinet, Multi-class card reader input, with stand	
EA-100250-A00	32/32 COMBO	XT/iFob - Standard (add-on)	64 port combo add-on cabinet, without stand	
EA-100250-A01	32/32 COMBO	XT/iFob - Standard (add-on)	64 port combo add-on cabinet, with stand	

* Expandable to 64 total ports with addition of 32 port panel (Sold separately). See page 69 for more details.

Continued on next page.

Intelligent Key Cabinet

Part Number	Ports	Type (Standard, Mini, Large)	Description	Price
EA-100259-M00	96	iFob Standard	96 port iFob standard cabinet, no input, without stand	
EA-100259-MD0	96	iFob Standard	96 port iFob standard cabinet, Multi-class card reader input, without stand	
EA-100259-M01	96	iFob Standard	96 port iFob standard cabinet, no input, with stand	
EA-100259-MD1	96	iFob Standard	96 port iFob standard cabinet, Multi-class card reader input, with stand	
EA-100259-A00	96	iFob - Standard (add-on)	96 port iFob add-on cabinet, without stand	
EA-100259-A01	96	iFob - Standard (add-on)	96 port iFob add-on cabinet, with stand	
EA-100260-M00	128	iFob Standard	128 port iFob standard cabinet, no input, without stand	
EA-100260-MD0	128	iFob Standard	128 port iFob standard cabinet, Multi-class card reader input, without stand	
EA-100260-M01	128	iFob Standard	128 port iFob standard cabinet, no input, with stand	
EA-100260-MD1	128	iFob Standard	128 port iFob standard cabinet, Multi-class card reader input, with stand	
EA-100260-A00	128	iFob - Standard (add-on)	128 port iFob add-on cabinet, without stand	
EA-100260-A01	128	iFob - Standard (add-on)	128 port iFob add-on cabinet, with stand	
EA-100261-M00	160	iFob Large	160 port iFob standard cabinet, no input, without stand	
EA-100261-MD0	160	iFob Large	160 port iFob standard cabinet, Multi-class card reader input, without stand	
EA-100261-M01	160	iFob Large	160 port iFob standard cabinet, no input, with stand	
EA-100261-MD1	160	iFob Large	160 port iFob standard cabinet, Multi-class card reader input, with stand	
EA-100261-A00	160	iFob - Large (add-on)	160 port iFob add-on cabinet, without stand	
EA-100261-A01	160	iFob - Large (add-on)	160 port iFob add-on cabinet, with stand	
EA-100262-M00	192	iFob Large	192 port iFob standard cabinet, no input, without stand	
EA-100262-MD0	192	iFob Large	192 port iFob standard cabinet, Multi-class card reader input, without stand	
EA-100262-M01	192	iFob Large	192 port iFob standard cabinet, no input, with stand	
EA-100262-MD1	192	iFob Large	192 port iFob standard cabinet, Multi-class card reader input, with stand	
EA-100262-A00	192	iFob - Large (add-on)	192 port iFob add-on cabinet, without stand	
EA-100262-A01	192	iFob - Large (add-on)	192 port iFob add-on cabinet, with stand	
EA-100263-M00	224	iFob Large	224 port iFob standard cabinet, no input, without stand	
EA-100263-MD0	224	iFob Large	224 port iFob standard cabinet, Multi-class card reader input, without stand	
EA-100263-M01	224	iFob Large	224 port iFob standard cabinet, no input, with stand	
EA-100263-MD1	224	iFob Large	224 port iFob standard cabinet, Multi-class card reader input, with stand	
EA-100263-A00	224	iFob - Large (add-on)	224 port iFob add-on cabinet, without stand	
EA-100263-A01	224	iFob - Large (add-on)	224 port iFob add-on cabinet, with stand	
EA-100264-M00	256	iFob Large	256 port iFob standard cabinet, no input, without stand	
EA-100264-MD0	256	iFob Large	256 port iFob standard cabinet, Multi-class card reader input, without stand	
EA-100264-M01	256	iFob Large	256 port iFob standard cabinet, no input, with stand	
EA-100264-MD1	256	iFob Large	256 port iFob standard cabinet, Multi-class card reader input, with stand	
EA-100264-A00	256	iFob - Large (add-on)	256 port iFob add-on cabinet, without stand	
EA-100264-A01	256	iFob - Large (add-on)	256 port iFob add-on cabinet, with stand	
EA-100265-M00	288	iFob Large	288 port iFob standard cabinet, no input, without stand	
EA-100265-MD0	288	iFob Large	288 port iFob standard cabinet, Multi-class card reader input, without stand	
EA-100265-M01	288	iFob Large	288 port iFob standard cabinet, no input, with stand	
EA-100265-MD1	288	iFob Large	288 port iFob standard cabinet, Multi-class card reader input, with stand	
EA-100265-A00	288	iFob - Large (add-on)	288 port iFob add-on cabinet, without stand	
EA-100265-A01	288	iFob - Large (add-on)	288 port iFob add-on cabinet, with stand	

Intelligent Key Cabinet Accessories



Cabinet Stand



Cabinet Tray



Medeco iFob



Multi-Class Reader

Description	Part Number	Price
Medeco iFob	EA-300242	
6" Cable Seals (price is per cable seal)	EA-300245	
Multi-Class reader, includes install and configuration	EA-250066	
Spare XT Panel	EA-300244	
Spare iFob Panel	EA-300243	
Tray Assembly	EA-300257	

IKC Installation Items

Description	Part Number	Price
Key Cabinet Stand	EA-300239	
Large Wallboard	EA-300254	
Standard Wall board	EA-300256	
Mini Wallboard	EA-300255	

IKC Extended Warranty & Service Plan

Coverage Includes:	Part Number	Price
<ul style="list-style-type: none"> •All cabinet hardware •All software updates and upgrades •Online training •Expedited shipping (replacement parts) •Phone and online support •Pro Service Consultation <p>*Normal use only. Does not cover physical damage or misuse.</p>	SW-500701-1	

NEW!

Medeco T21 Key Management System

The Medeco T21 is a sophisticated stand-alone key management system which combines innovative RFID technology and robust design to provide small to medium-sized businesses with the advanced management of 21 keys or keysets in a plug and play solution.



Operation:

- Stand-alone plug & play solution with advanced RFID technology
- Touchscreen interface
- PIN access to designated keys or keysets which are individually locked in place
- Keys are securely attached using special security seals
- Simple to configure through the setup wizard
- No requirement for network connection or PC
- Concealed robust fixing points allow secure wall fixing
- Mains operated with optional battery backup
- 1,000 users per system
- System can save 250,000 audit events

Technical Information:

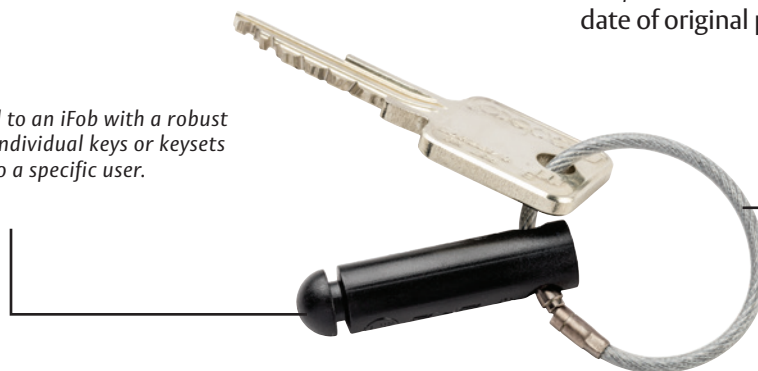
- User, key and access rights administration
- Multilingual functionality
- Screen-based audit trail and reporting capability or export via USB port
- 21 robust, long-live iFobs with security seals
- 21 locking receptors with LEDs
- Robust and compact steel housing eliminates exposed hinges and obvious access points
- Manual override and door release functions in case of emergency
- Audible alarms

Warranty:

Medeco warrants the T21 to be free of defects in material and/or workmanship for a period of one (1) year from date of original purchase.

iFob

Once attached to an iFob with a robust security seal, individual keys or keysets are assigned to a specific user.



Security Seal

The secure one-time security seal is cost-effective and simple to apply without the need for specific tools.

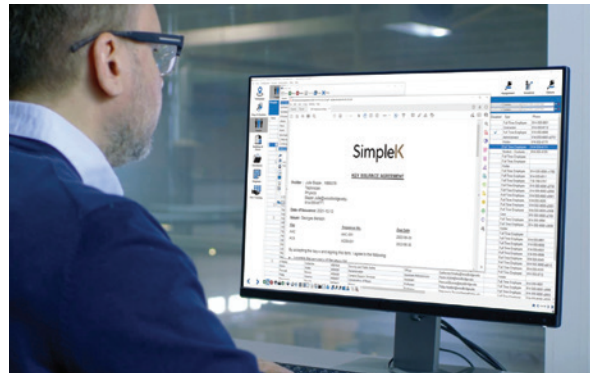
T21 Key Management System

Description	Part Number	Price
Medeco T21 Key Management System, comes with 21 ifobs and security seals.	EA-100117	
Security Seal	EA-100148	
iFob	EA-100149	
Battery	EA-100154	
T21 Key override replacement lock	960590 W 26-S6	

SimpleK

Master Key System and Key Management Software

SimpleK is a flexible and intuitive software program that streamlines and simplifies the complexities of managing master key systems, keys, and facilities. It combines all tools needed by locksmiths, facility managers, security officers, and anyone else involved in the key management processes.



The software provides total key control with audit trails, outstanding keys, overdue keys, tools for the rekeying process, and more. SimpleK software allows you to import maps and floor plans to see who has access to each individual door, the associated keys, and hardware on the opening.

SimpleK allows you to manage keys and keying systems of all sizes and types. This includes: Medeco, Corbin Russwin, Yale, SARGENT, ASSA, ABLOY, Schlage, Best, and many others.

Features:

- Advanced tools for locksmithing and key control
- Manage all key systems (unlimited number of records)
- Robust import tools to bring current data into SimpleK
- Interactive floor plans
- Master key system design and expansion
- Key requests, approvals, issuances, and returns workflow
- Cylinders and core pinning (verifies key interchange)
- Door-Key association visualization and rekeying solution
- Easily identify keys, access, and hardware on openings
- Visibility to audit trails and outstanding/overdue keys

SimpleK – Standard Edition

Description	Part Number	Price
Primary License (3 users)	SMK040-30	
Updates & Support Plan on Primary License, 1 year	SMK040-31	

SimpleK – Professional Edition

Description	Part Number	Price
Primary License (3 users)	SMK042-30	
Additional license	SMK042-32	
Updates & Support Plan on Primary License, 1 year	SMK042-35	
Updates & Support Plan on Additional License, 1 year (per Add. Lic.)	SMK042-33	

SimpleK – Enterprise Edition

Description	Part Number	Price
Primary License SimpleK Enterprise Edition	SMK060-30	
Updates & Support Plan on Primary License, 1 year	SMK060-31	

Add-On Modules

Description	Part Number	Price
Item Tracking	SMK032-31	
Web Interface	SMK032-33	
Room Management	SMK032-35	
Mobile Applications	SMK032-37	

Signature Capture Devices

Description	Part Number	Price
Topaz SigLite 1x5, T-S460-HSB-R	SMK004-01	
Topaz SigLite Backlit LCD 1x5, T-LBK460-HSB-R	SMK004-02	

*Standard Buying Program Discounts do not apply. Contact Medeco or SimpleK (orders@simplek.com) for net pricing.

Experience a safer
and more open world

medeco
ASSA ABLOY