



Medeco XT Ecosystem

Specification Guide

medeco[®]
ASSA ABLOY



Experience a safer
and more open world

Table of Contents

Key Specifications.....	3
Cylinder Specifications.....	8
Cylinder and Key Technical Specifications	11
Charging Device Specifications.....	12
Programming Device Specifications	13
Accessory Product Specifications.....	15
Software Specifications	17
Security System Specifications.....	20
Genetec Integration	21



Key Specifications

The Medeco XT product line consists of many different cylinder formats, several styles and generations of keys, cloud-based & local stand-alone software platforms as well as several online devices that allow key programming from/to anywhere in the world.

User Keys – Slim Line B –Generation 3 – Bluetooth (Part # EA-100177) - NEW

The Medeco XT Slim Line key with Bluetooth technology is an Intelligent Key that can communicate to mobile devices using Bluetooth Technology. The XT Air application for Android and iOS is available for download from the XT Web Manager home page.



- Keys can be programmed to complete any one of five different functions
 - User: standard function to unlock cylinders
 - Control: Electronically remove SFIC cores
 - Setup: Program lost key list in cylinder
 - Audit: Upload audit data from cylinder and transfer to XT database
 - Operator with Audit: Unlock cylinders and collect audit from cylinders
- Communicates via BLE (Bluetooth Low Energy) and through all the standard programming devices below.
- Very durable hardened stainless steel frame and Plastic housing
- Keys are water resistance but not waterproof. The keys should not be submerged in water for an extended period
- Operating temperature -4°F to 122°F (-20°C to 50°C).
- Stores a maximum of 14,000 cylinders that can be accessed
- Stores a maximum of 14,000 audit events. Audit can be configured as F-I-F-O or to disable key when memory is filled to prevent loss of audit trail data. Audit is stored in “non-volatile” memory. Memory is dynamic and is shared with cylinder info so as you increase the cylinder count the audit count will decrease
- Automatically returns authorized & unauthorized attempts from cylinders in the field to be included in Medeco XT software reporting
- Activation period may be set from one day to 365 days including two daylight savings adjustments
- Start and end time of day and days of week may also be selected per key
- The Medeco XT key incorporates a lithium-ion polymer (Li-Poly) rechargeable battery
- Charging temperature range is 32°F to 104°F (0° to 40°C)
- Battery life:
 - In Standby mode – XT Air app closed and key not communicating to app – approx. 21 days
 - In Update mode – XT Air app open and communicating with key – approx. 24 hrs.
- Display of more accurate charging percentage appears in all key Clients (Mobile & Desktop)
- Low Battery level indication via LED is reported during cylinder opening and at time of programming
- Extremely durable, hardened steel key tip
- Uses three gold-plated, spring loaded, data contacts
- Keys are laser-etched with 9-digit serial number on top of frame
- Size: 2.65" x 1.25" x .55"
- Weight: 1.33 oz.
- 2-year warranty
- Displays as G3B in the XT Web Manager Software platform

Key Specifications (cont.)

User Keys – Slim Line S – Generation 3

(Part # EA-100178) - NEW

Medeco XT Slim Line key has been updated with the latest technology to allow for future feature additions and an overall enhanced user experience.



- Keys can be programmed to complete any one of five different functions
 - User: standard function to unlock cylinders
 - Control: Electronically remove SFIC cores
 - Setup: Program lost key list in cylinder
 - Audit: Upload audit data from cylinder and transfer to XT database
 - Operator with Audit: Unlock cylinders and collect audit from cylinders
- Very durable hardened stainless steel frame and Plastic housing
- Keys are water resistance but not waterproof. The keys should not be submerged in water
- Operating temperature -4°F to 122°F (-20°C to 50°C).
- Stores a maximum of 14,000 cylinders that can be accessed – this may be a route or cylinder list
- Stores a maximum of 14,000 audit events. Audit can be configured as F-I-F-O or to disable key when memory is filled to prevent loss of audit trail data. Audit is stored in “non-volatile” memory. Memory is dynamic and is shared with cylinder info so as you increase the cylinder count the audit count will decrease
- Automatically returns authorized & unauthorized attempts from cylinders in the field to be included in Medeco XT software reporting
- Activation period may be set from one day to 365 days including two daylight savings adjustments
- Start and end time of day and days of week may also be selected per key
- The Medeco XT key incorporates a lithium-ion polymer (Li-Poly) rechargeable battery
- Battery charge capacity is generally more than 1800+ cylinder openings (when using a cylinder unlock time of .8 seconds)
- Charging temperature range is 32°F to 104°F (0° to 40°C)
- Display of more accurate charging percentage appears in all key Clients (Mobile & Desktop)
- Low Battery level indication via LED is reported during cylinder opening and at time of programming
- Extremely durable, hardened steel key tip
- Uses three gold-plated, spring loaded, data contacts
- Keys are laser-etched with 9-digit serial number on top of frame
- Size: 2.65" x 1.25" x .55"
- Weight: 1.33 oz.
- 2-year warranty
- Displays as G3S in the XT Web Manager Software platform

Key Specifications (cont.)

User Keys – Industrial-Generation 2 -Increased memory (Part # EA-100107)

(Marked with a 2X on the top cap of the key)

Released May15, 2015 (starting serial # 000-654-636)

Medeco XT User Keys are designed for the demanding needs of commercial and industrial industry



- Keys can be programmed to complete any one of five different functions:
 - User: standard function to unlock cylinders
 - Control: Electronically remove SFIC cores
 - Setup: Program lost key list in cylinder
 - Audit: Upload audit data from cylinder and transfer to XT database
 - Operator with Audit: Unlock cylinders and collect audit from cylinders
- Extremely durable all metal stainless steel housing for robust applications
- Keys are water resistance but not waterproof. The keys should not be submerged in water
- Operating temperature -4°F to 122°F (-20°C to 50°C).
- Stores a maximum of 14,000 cylinders that can be accessed – this may be a route or cylinder list
- Stores a maximum of 14,000 audit events. Audit can be configured as F-I-F-O or to disable key when memory is filled to prevent loss of audit trail data. Audit is stored in “non-volatile” memory. Memory is dynamic and is shared with cylinder info so as you increase the cylinder count the audit count will decrease
- Automatically returns unauthorized attempts from cylinders in the field to be included in Medeco XT software reporting
- Activation period may be set from one day to 365 days including two daylight savings adjustments
- Start and end time of day and days of week may also be selected per key
- The Medeco XT key incorporates a lithium-ion polymer (Li-Poly) rechargeable battery
- Battery charge capacity is generally more than 1800+ cylinder openings (when using a cylinder unlock time of .8 seconds)
- Charging temperature range is 32°F to 104°F (0° to 40°C)
- Low Battery level indication via LED is reported during cylinder opening and at time of programming
- Extremely durable, hardened steel key tip
- Uses three gold-plated, spring loaded, data contacts
- Keys are laser-etched with 9-digit serial number on top cap
- Size: 3.1" x 1.25" x .65"
- Weight: 2.38 oz
- 2-year warranty
- Displays as G2 in the XT Web Manager Software platform

Key Specifications (cont.)

User Keys – Slim Line –Generation 2 (Part # EA-100156)

Medeco XT Slim Line key has been updated with the latest technology to allow for future feature additions and an overall enhanced user experience.



- Keys can be programmed to complete any one of five different functions
 - User: standard function to unlock cylinders
 - Control: Electronically remove SFIC cores
 - Setup: Program lost key list in cylinder
 - Audit: Upload audit data from cylinder and transfer to XT database
 - Operator with Audit: Unlock cylinders and collect audit from cylinders
- Very durable hardened stainless steel frame and Plastic housing
- Keys are water resistance but not waterproof. The keys should not be submerged in water
- Operating temperature -4°F to 122°F (-20°C to 50°C).
- Stores a maximum of 14,000 cylinders that can be accessed – this may be a route or cylinder list
- Stores a maximum of 14,000 audit events. Audit can be configured as F-I-F-O or to disable key when memory is filled to prevent loss of audit trail data. Audit is stored in “non-volatile” memory. Memory is dynamic and is shared with cylinder info so as you increase the cylinder count the audit count will decrease
- Automatically returns authorized & unauthorized attempts from cylinders in the field to be included in Medeco XT software reporting
- Activation period may be set from one day to 365 days including two daylight savings adjustments
- Start and end time of day and days of week may also be selected per key
- The Medeco XT key incorporates a lithium-ion polymer (Li-Poly) rechargeable battery
- Battery charge capacity is generally more than 1800+ cylinder openings (when using a cylinder unlock time of .8 seconds)
- Charging temperature range is 32°F to 104°F (0° to 40°C)
- Low Battery level indication via LED is reported during cylinder opening and at time of programming
- Extremely durable, hardened steel key tip
- Uses three gold-plated, spring loaded, data contacts
- Keys are laser-etched with 9-digit serial number on top of frame
- Size: 2.65" x 1.25" x .55"
- Weight: 1.25 oz.
- 2 year warranty
- Displays as G2 in the XT Web Manager Software platform

User Keys – Industrial Generation 1 – original (discontinued)

- Same as above except:
- Stores a maximum of 8,000 cylinders that can be accessed – this may be a route or cylinder list
- Stores a maximum of 5,000 audit events. Audit can be configured as F-I-F-O or to disable key when memory is filled to prevent loss of audit trail data. Audit is stored in “non-volatile” memory. Memory is dynamic and is shared with cylinder info so as you increase the cylinder count the audit count will decrease
- Displays as G1 in the XT Web Manager Software platform

Key Specifications (cont.)

Medeco XT Key LED Indicators – Separated by Key type set in Schedules

All Modes	
Condition: Battery “dead”	A single 50ms RED flash
Condition: Real-time clock not programmed/invalid	RED on solid for 3 seconds
Condition: Communication error	RED flashes 5 times per second for 1 second
Condition: Validate failed (system code, site code, or system level)	RED on solid for 3 seconds
Condition: Key out of schedule, expired, or pending	RED on solid for 3 seconds
Condition: Lock not in lock list (not on route)	RED on solid for 3 seconds
Condition: PID validation fails	RED on solid for 3 seconds
Condition: Authentication fails	RED on solid for 3 seconds
Condition: Remove core; battery good	GREEN on solid for first phase of operation; GREEN flashing 2 times per second for duration of second phase of operation
Condition: Remove core; battery low	GREEN and RED on solid for first phase of operation; RED on solid and GREEN flashing 2 times per second for duration of second phase of operation

Setup Mode	
Condition: Lock not in lock list (not on route)	RED on solid for 3 seconds
Condition: PID validation fails	RED on solid for 3 seconds
Condition: Authentication fails	RED on solid for 3 seconds
Condition: Failure loading blacklist to lock	RED on solid for 3 seconds
Condition: Successfully loaded blacklist to lock	GREEN on solid for 2 seconds

User Mode	
Condition: Key audit full and rolling audit disabled	RED on solid for 3 seconds
Condition: Lock not in lock list (not on route)	RED on solid for 3 seconds
Condition: Authentication fails	RED on solid for 3 seconds
Condition: Opening; battery good	GREEN on solid for duration of opening
Condition: Opening; battery low	GREEN and RED on solid for duration of opening

Audit Mode	
Condition: Read lock audit; key’s audit memory full	RED flashing 2 times per second for 3 seconds
Condition: Reading lock audit; memory fills up	RED flashing 2 times per second for 3 seconds
Condition: Reading lock audit	GREEN flashes 5 times per second for duration of audit download process
Condition: Reading lock audit; comm. error	RED flashes 5 times per second for 1 second
Condition: Lock audit successfully read	GREEN on solid for 2 seconds

Charging	
Condition: Charging	RED flashes 1 time every 4 seconds
Condition: Charging complete	GREEN flashes 1 time every 4 seconds

Cylinder Specifications

Cylinders (See catalog for options and part numbers)

Medeco XT cylinders are very robust and contain numerous stainless steel components to withstand extreme environmental conditions in most applications.



- Electronic access eliminates re-keying due to lost keys
 - XT Web Manager & XT Solo software controls the cylinders (doors, assets, etc.) that keys are programmed to open (cylinder list)
 - XT Web Manager & XT Solo software controls which cylinders are assigned to which doors, assets, etc. in the system
- Absence of keyway deters vandalism; prevents loss due to surreptitious key duplication
- Stainless steel plug face and shell resists adverse environmental conditions
- Non-volatile memory stores 2,000 audit events (oldest record deleted after 2,000 events)
- Automatically “stores” unauthorized entry attempts from keys that:
 - are not in the correct Medeco XT system – [Key] NOT IN SYSTEM
 - are outside scheduled date, time or day of week – [Key] OUT OF SCHEDULE
 - not programmed to open specific cylinder – [Cylinder/Door] NOT ON KEY
 - are stored on internal blacklist – BLACKLISTED KEY ATTEMPT
- Cylinders store up to 40 blacklisted keys (keys lost or out-of-service). Removing or adding keys to the cylinder blacklist are easily managed using a User key (programmed to operate as a Setup key)
- Drill resistant inserts guards against drill attacks. 2-6 inserts per cyl depending on format
- Break-away plug face fails secure in the event of over-torquing (95+ in/lbs.)
- Available in a variety of cylinder formats
- Interchangeable cores can be managed using a User key (programmed to operate as a Control key)
- Custom cylinder formats/configurations available upon request
- See below for section regarding test specifications

Dual-Tech Rapid Entry Cylinder (See catalog for options and part numbers)

Medeco XT Dual-tech cylinder combines two cylinder technologies — XT and mechanical — into one mortise or rim cylinder housing



- Arrow Best or Medeco X4 keyways supplied for the mechanical cylinder.
- Mortise: This cylinder requires special paired cams that are only available from Medeco.
 - The cams are half the thickness of a standard cam and are made of steel for durability
 - The dual-tech unit requires a direct-drive cam for the XT cylinder and an override cam for the mechanical cylinder
- Cams available include:
 - Adams Rite (Z02)
 - Yale (Z01)
 - Corbin Russwin (Z00)
 - Sargent (Z20)
 - Schlage (Z34)

Cylinder Specifications (cont.)

All Weather Padlock-AWP

(See catalog for options and part numbers)

The All Weather Padlock (AWP Series) offers the highest level of padlock weather and severe service protection available from Medeco. The body is solid 303 stainless steel and is available with either a stainless steel or hardened boron alloy shackle. A weatherproof cylinder seal cap, attached by a stainless steel cable, seals both mechanical and eCylinders from harsh environments.

Multiple mechanical and intelligent key technologies are available, as well as different shackle sizes and lengths.



The AWP is not only weatherproof, it is also a high security padlock. Mechanical cylinders provide the benefit of patented key control and resistance to surreptitious attacks while both the Medeco CLIQ and Medeco XT intelligent key cylinders add sophisticated audit and control features.

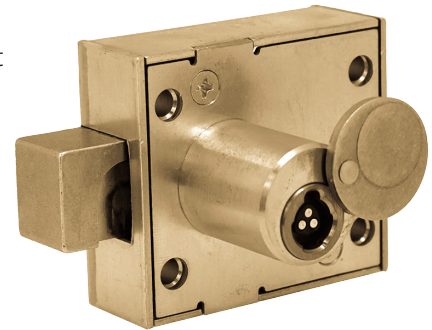
Subjected To Rigorous Performance Tests:

- IEC 60529 - IP68 (Water and Dust Ingress)
- MIL-STD-202G - 201A (Vibration)
- ASTM F883-13 - Tensile, Shock, Plug Pull, Plug Torque, Cutting, Corrosion - Salt Fog
 - Grade 6 – 7/16" shackle – Cutting Test
 - Grade 5 – 5/16" shackle – Cutting Test
- UL Listed
- solid 303 stainless steel
- Hardened stainless steel inserts
- Available in a variety of different shackle lengths.
- Soft O-Ring Service Kit available

Traffic Cabinet Lock (Part # EA-100221)

A simple retrofit lock like the Medeco XT Traffic Cabinet Lock is the quickest, most cost-effective way to help eliminate tampering with the advanced equipment contained in traffic cabinets. The XT Traffic Cabinet Lock will provide the necessary access control and accountability to help protect and secure critical traffic light patterns.

- Retrofits into existing hardware—no modifications required
- No wiring required—all power is provided by the key
- Takes less than 5 minutes to install
- Indoor/outdoor use—stainless steel shell construction
- Built-in cover
- Part of the XT Intelligent Key System



Note: A mechanical high security version of the Traffic Cabinet Lock is also available. See the Medeco Catalog or visit www.medeco.com for more information.

Cylinder Specifications (cont.)

Safe Lock (Part #'s EA-100206 Deadbolt, EA-100207 Spring Bolt, EA-100208 Swingbolt)

The Medeco XT Safe Lock is a direct replacement for physical security devices that utilize standard mechanical dial combination locks or digital keypad locks. The Medeco XT Safe Lock includes a Reader with Key Port mounted on the outside of the safe door, and is available in one of three XT lock configurations designed to meet a variety of retrofit needs: Deadbolt, Spring Bolt and Swing Bolt.

- Retrofits to existing mechanical/electronic safe lock door prep
 - Banking Modes include; Normal, Time Delay & Dual Authentication
 - Lock housings are available in three bolt configurations:
 - Deadbolt with drive spline
 - Spring bolt with drive spline
 - Swing bolt (wire only)
 - All power to operate the lock is provided by the XT key (purchase separately)
 - Reader and lock connect over four-wire interface cable
 - All electronics are secure inside the lock
 - CR2 battery in reader provides power to LED
- The single color (green) LED feedback included indications for:
- Authorized Access
 - Countdown status for time-delay mode
 - Prompting for additional XT Key when lock is in Dual-Authentication mode
- Designed to meet UL 2058 Type 1 Standard



Cylinder and Key Technical Specifications

Environmental Qualification – XT Cylinders

- Extreme high temperature: 140°F (60°C)
- Extreme low temperature: -40°F (-40°C)
- Dust and Water Jet, IP-68 (Independent Testing)
 - Certified to Specification CEI/IEC 60529, Edition 2.1
 - XT Cylinder installed in G8R padlock body
- Dust and Water Jet, IP-55 (Independent Testing)
 - Certified to Specification CEI/IEC 60529, Edition 2.1
 - Certified to Specification DIN EN 1303, ICS 91.190
- Salt Fog, Greater than 96 hours (Independent Testing)
 - Certified to Specification ASTM-B-117
 - Certified to Specification DIN EN 1303, ICS 91.190

Electronic Testing – XT Cylinders, Keys, and Key Programming Stations

- ESD Protection: +/- 15kV
- Over-voltage Protection: Cylinder Security Protected
- Electronic Manipulation of Electronic Hardware, Exceeds Specification (Independent Testing)
 - Certified to Specification AE3104
 - Awarded SKG 3-Star Certification

Mechanical Qualification – XT Keys and Cylinders

- Torque Testing (Independent Testing)
 - Plug Front Breakaway Torque: Plug front spins and cylinder remains secure (90in-lb)
 - Certified to DIN EN 1303, ICS 91.190
 - Awarded SKG 3-Star Certification
- Drill Testing (Independent Testing)
 - Cylinders have high resistance to drill attack testing
 - Certified to DIN EN 1303, ICS 91.190
 - Awarded SKG 3-Star Certification
- Pull/Extraction Testing (Independent Testing)
 - Cylinders have a high resistance to pull/extraction attack testing
 - Certified to specification DIN EN 1303, ICS 91.190
 - Certified to specification NEN 5089
 - Awarded SKG 3-Star Certification
- Drop Testing
 - Key and Cylinder resistant to over 4-foot drop
- Vibration Testing (Independent Testing)
 - Certified to Transportation Specification, Mil-STD-202G, Method 201A, 3 Axis Qualification
- Durability Testing (Independent Testing)
 - Keys and Cylinders cycle tested to over 200,000 cycles.
 - Certified to DIN EN 1303, ICS 91.190
 - Awarded SKG 3-Star Certification
- Attack Point Assessment (Independent Testing)
 - Cylinder passes minimum attack point assessment review
 - Certified to Specification NEN 5089
 - Awarded SKG 3-Star Certification

Charging Device Specifications

USB Portable/Personal Single Key Charger

- Holds one XT key for charging
- Uses standard Micro USB connection (Cable not included)
- 1.25" x .75" x .75"

Note: Portable charger and USB cable included with all XT Key Bundles.



XT Multi-Key Charger (Charges only, does not program) (Part # EA-100138)

- The multi-key charger uses an AC power supply (included).
- Charges up to 9 XT keys
- LED on key shows charging status
- Uses a heavy-duty plastic enclosure for durability and rubber feet for stability.
- Dimensions: 10.5" x 8.1" x 1.6"



Programming Device Specifications

IPD – Identification and Programming Device

(Part #'s EA-100242-000 Base Unit with Power Supply, EA-100242-010 Base Unit with Power Supply and Desktop Mount, EA-100242-100 Base Unit with Power Supply and Wall Mount.)

- The IPD makes updating keys quick, easy and secure. It enhances the flexibility of the XT system by enabling administrators of web-hosted systems to facilitate key programming, recurring validations and audit data collection directly by the key holder from anywhere a network connection is available.
 - User friendly 7" capacitive touchscreen
 - Displays to User during key programming:
 - Programming status
 - PIN code entry
 - Customer messages set in XT Web
 - Displays to Admin during key programming:
 - Same as above plus...
 - Device information screen
 - IP Address
 - MAC Address
 - Application Version
 - User Description –pulled from XT Web
 - Settings screen
 - URL entry dialog box
 - Custom Settings:
 - ◆ Static IP
 - ◆ Subnet Mask
 - ◆ Gateway
 - ◆ DNS (Primary)
 - ◆ DNS (Secondary)
 - Linux OS running on Raspberry Pi4
 - 2G Ram
 - 32G SD Card
 - Extremely durable all metal housing
 - Internal Ethernet port, USB-C power supply
 - Dimensions are 10.4" L x 4.8" H x 1.8" H
 - VESA mounting
 - Additional Cable knockouts for power and Ethernet
 - XT key port
 - Support for DHCP and static IP addresses
 - Charges key



Desktop Programmer (Part # EA-100109)

The Medeco XT Desktop Programmer allows for ease of XT key programming via USB connection via any Windows based PC.

- Small footprint for easy transportability
- Durable plastic housing
- Powered via USB cable
- XT Key interface/dock for programming
- Charges and programs XT Keys
- LED for programming/charging feedback
- Dimensions: 2.77" x 1.76" x .75"



Programming Device Specifications (cont.)

Multi-Key Programmer/Charger (Part # EA-100232)

- Programs and charges up to 9 keys at a time, ensuring they are always updated and ready for use.
- Utilizing the new XT Key Client in XT Web Manager the user can view the status of each key in real-time.
- Plugs into a standard USB port and uses an AC power supply (included).
- Multiple units can be used (requires open USB port).
- LED shows charging status
- Uses a heavy-duty steel enclosure for durability and rubber feet for stability.
- Dimensions: 10.5" x 8.1" x 1.6"



Mobile Programming Device (MPD) (Part # EA-100125)

The Medeco XT Mobile Programmer allows XT keys to be programmed remotely via Bluetooth (on an Android device) or via a USB tether to a laptop. The XT Go Mobile Key Client App provides all the functionality and feedback you need to ensure proper programming of your keys

- Compact Size: 5.5"L x 2"W x 1"H
- Requires no power – powered by the key
- Provides LED feedback
- Uses Bluetooth v3.0 communication between the key and Mobile device
- Android application available from XT Web Manager website
- Android application allows connection to XT database to program keys
- Android application displays programming status via phone display
- Does not charge battery



Medeco XT Air App

The Medeco XT Air Mobile Application is used to communicate from your mobile device to the Medeco XT Bluetooth key.

- Requires:
 - Android OS v5.0 or higher
 - Apple iOS v10.0 or higher
- Uses Bluetooth v4.0 (BLE) communication between the mobile device and key
- Android and iOS application available for download from XT Web Manager website
- Application allows connection to XT database to program keys
- Application displays programming status via phone display
- Application displays key audit
- Application allows for schedule updates



Accessory Product Specifications

IKC – Intelligent Key Cabinet (See catalog for options and part numbers)

The Medeco IKC - Intelligent Key Cabinet is a key management system ideal for keys and other assets that require a high level of security and accountability. A complete storage and control solution, the IKC is an electronically controlled steel cabinet that restricts access to keys, and can only be opened by authorized personnel using PIN, Biometric Fingerprint, or Prox Card authentication (optional). The IKC electronically keeps a record of key removals and returns - by whom and when. Exclusive iFob technology allows storage of all types of keys. An essential addition to a Medeco XT Intelligent Key system, it securely locks in place and charges Medeco XT keys so they are always ready for use.



- Available in 32 and 64 port sizes
- XT and iFob versions
- 32 port cabinets must be either all XT or all iFob ports
- 64 port cabinets can be all XT, all iFob or a combination of 32 XT plus 32 iFob
- Securely stores and charges XT keys (XT version)
- Identifies XT key serial number (XT version)
- Fingerprint reader
- Built-in LCD screen for ID
- Fingerprint reader
- Supports 2 factor authentication
- Audible and visual alarms
- SMS alert messages
- Email alert messages
- Camera for security photo capture
- Comprehensive Reporting & Analytics
- Emergency Fob Release System
- Multi-System Networking
- Medeco High Security mechanical lock for manual override
- Requires a separate XT IPD programmer to program XT Keys (requires XT Web Manager software)
- Optional: Smart card reader, stand

Connectivity/Technical Information:

- TCI/IP Network connection - standard
- Cellular Antenna & Modem, service sold separately (Optional) *
- 110 V.A.C., 60 Hz. Plug provided, Hard wiring suggested
- 64 port device: 27"w x 25.25"h x 12"d; XX lbs
- 32 port device: 27"w x 14.72"h x 12"d; XX lbs

Accessory Product Specifications (cont.)

AIM –Access Interface Module (Part # EA-100192)

The Medeco XT AIM device allows users to trigger actions in other systems after inserting their Medeco XT key into the module. Unlock doors with electric strikes or maglocks

- Initiate video cameras
- Bring attention to unauthorized events by triggering access control or alarm panels
- Greatly enhances the capability of the Medeco XT Intelligent Key System
- Key audit tracks events just like an XT cylinder
- Two-person authentication option
- Uses NO - Normally Open - and NC - Normally Closed - relays to trigger different outputs for Access Granted or Access Denied
- Can be powered by an XT key or a 12-24V power supply depending on AIM connection



Guard Tour Reader (Part # EA-100240)

The Medeco XT Guard Tour Reader is a simple, yet powerful, user tracking solution that can be added to any Medeco XT Intelligent Key system. Its robust design allows installation in any location where tracking movement is important. The reader mounts easily to any interior or exterior wall, door, or any other flat surface. Once installed, the reader programs just like a standard XT cylinder within the XT Web Manager Software solution. Then, as the designated 'Tour' individual makes their rounds, they simply touch the reader with their XT key which creates an audit event, confirming they completed the task. Once the key is inserted, these audit events can be uploaded to the XT Web Manager software via any XT programming device, including desktop, remote (network), or through the XT AIR app on a mobile device.



Software Specifications

Medeco has produced security management software since the early 1990's for various markets and applications. Medeco XT software is extremely flexible and can be deployed in a myriad of configurations described below:

XT Web Manager Software for Web Enabled Configurations – Medeco Hosted

Features

- Access to the Medeco XT Web Manager website allows for secure operation of the Medeco XT system. Keys can be programmed anywhere from client hardware having internet access.
- Extremely versatile report utility provides user friendly data mining that may be exported into various file formats.
- SQL based database
- Web Services available to support SQL data sharing to alleviate redundant data entry across other 3rd party applications (EAC systems, CCTV, systems, visitor management, etc...)

The Medeco Web Manager software is offered in several configurations including:

- Medeco hosted Web Manager– 4 levels of annual hosting offerings – Basic, Plus & Advanced & Enterprise. All offerings are hosted on AWS (Amazon Web Services).

There are many advantages to the Medeco hosted option that allows you to save both time and money:

- No local server hardware to maintain
- Servers are maintained by Amazon and Medeco personnel
- No need for knowledgeable IT personnel to manage software
- The software is managed by Medeco's experienced IT staff
- No backups to run and store
- All servers are redundant and backed up multiple times per day
- No need for a disaster recovery plan or hardware needed (local)
- A complete disaster recovery plan is in place and tested regularly.
- Both FedRamp and GovCloud options available for adherence to the strictest security policies.

These are just a few of the advantages. Please speak with your Medeco Specialist for additional information:

- Customer self-hosted Web Manager– 2 levels of functionality - Advanced and Enterprise

Software Specifications (cont.)

XT Web Manager PC Operating Requirements and Supported Web Browsers

For full details refer to the Medeco XT Web Hosting Server Requirements document.

Client Machine

Screen Resolution

- A minimum resolution of 1920x1080 is recommended.

Processor

- Intel Pentium or compatible 1.4 GHz or higher processor

Operating System

- Windows 10

Web Browser

- Firefox, Version 14.0.1 or higher
- Internet Explorer, Version 9.0.5 or higher
- Chrome, Version 21.0.1180.79 or higher
- Safari, Version 5.1.1 or higher

Memory

- 4G RAM

Drives

- 40 GB or greater disk drive

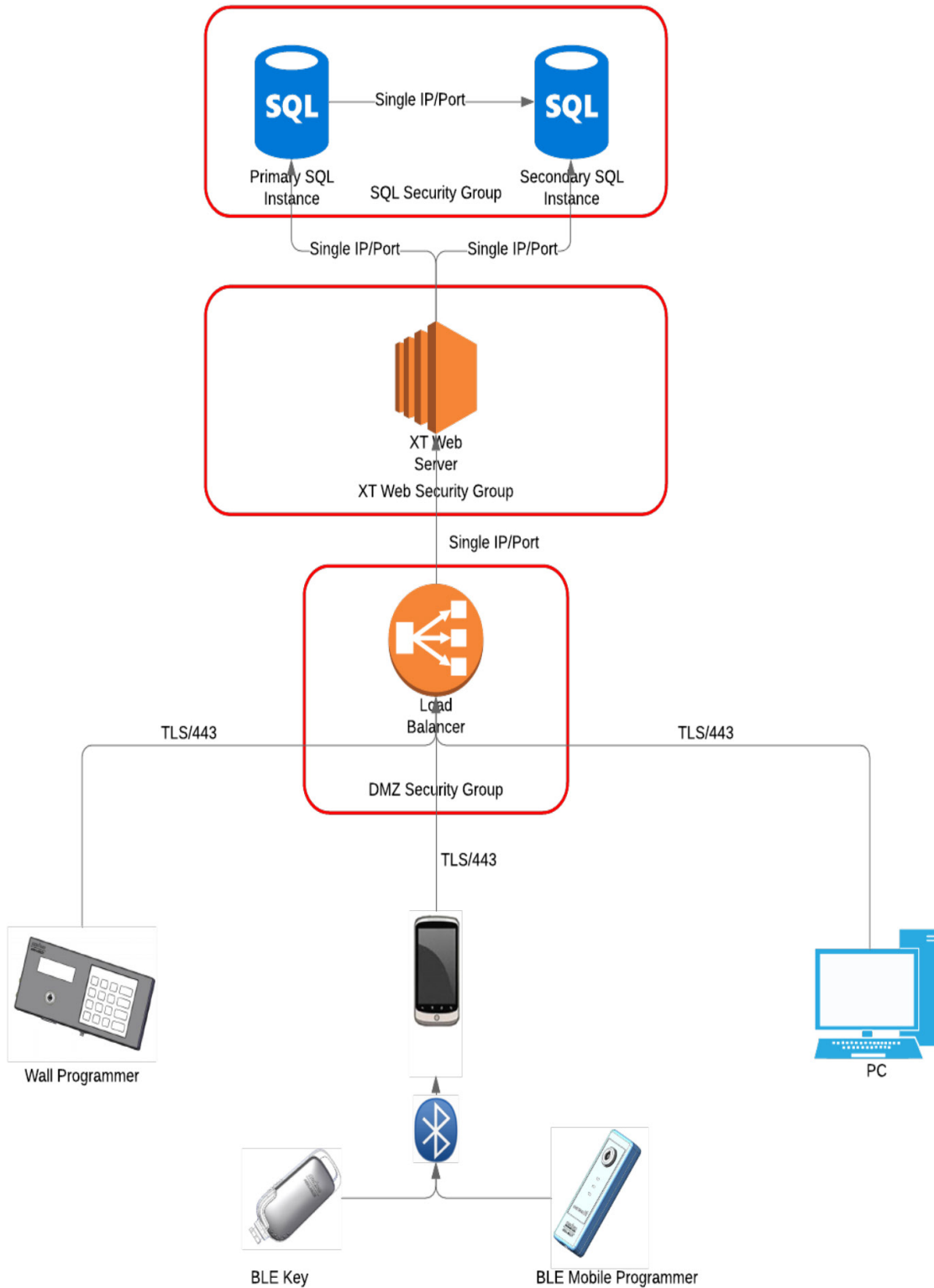
Ports

- 1 available USB port for programming station
- Internet connection required

XT Web Manager Platform, Recommended Server Specifications for hosting XT Web

- Microsoft Windows Server 2016
- Microsoft SQL Server 2016 (Medeco XT Web Manager version S65.1 and higher required)
- IIS 8.5
- 16GB RAM
- Xeon Quad-core 2.4 GHz Processor or equivalent
- 100GB storage

Software Specifications (cont.)



Security System Specifications

System Security (Encryption) – Overall System including Cylinders, Keys, and Software

- Multiple required layers of security including the Medeco XT system dongle, customer unique PIN (System Password), customer unique system code, factory controlled devices and security data packets (“Codebooks”). Software logins and user definable modular permissions grant and control software access
- System and System Setup:
 - Every XT system is unique and is secured by the following:
 - A unique factory-generated system number is assigned to every XT system. The system number ‘belongs’ to the specific end user and/or dealer and must be referenced when creating additional hardware in order for it to operate with the user software. This makes ‘cloning’ of hardware near impossible.
 - Proprietary XT system ‘codebooks’ are encrypted files that contain key and cylinder system information. Without these files, which are sent via secure email, cylinders and keys cannot be used.
 - Secure hardware dongle is used to load encryption algorithm into server to allow communication with encrypted ‘codebook’ data and host server. These are system specific and are unique for each system.
- Web Security
 - Utilizes HTTPS protocol – to protect privacy and integrity of transferred data
 - Creation of end-to-end secure tunnel between Server and Key. Data in this tunnel is encrypted for even higher security.
 - In compliance with OWASP 10 guidelines related to web penetration testing. Tested by 3rd party to meet or exceed requirements to guard against top 10 critical web application security risks. (https://www.owasp.org/index.php/Category:OWASP_Top_Ten_Project)
 - Utilizes user specific PIN codes to enhance security when a Admin/user is updating their key at a programming station

Medeco an ASSA ABLOY Company

Main Site: 3625 Alleghany Drive

Salem, Virginia 24153 United States

has been registered by Intertek as conforming to the requirements of:

ISO/IEC 27001:2013



ISO 27001 certification affirms that Medeco’s Salem, Virginia operation adheres to internationally recognized standards for information security management in the production and sale of XT Intelligent Key Systems.

ISO 27001 provides requirements for setting up and maintaining an Information Security Management system in order to keep information assets secure.

Genetec™ Integration

Genetec Plug-in for Medeco XT

System configuration Overview

For all new systems, purchase of the following is required

From Medeco/Medeco partner?

- Purchase of Cylinders and keys (and key chargers)
- Purchase at least one Desktop programmer – EA-100109
- Purchase a system enhanced dongle– EA-250059
- Obtain a Dongle PIN (provided by Medeco and entered at time of SW install)
- Obtain a ‘system code signature file” (provided by Medeco and entered at time of SW install)
- Obtain Codebooks (provided by Medeco).
 - Provide Medeco with an email address for the customer or they need to go to Genetec contact for distribution
- A new Medeco XT System number is to all new customers. This is part of the built-in security for this product line.
 - Need to provide this system number for all add-on orders.

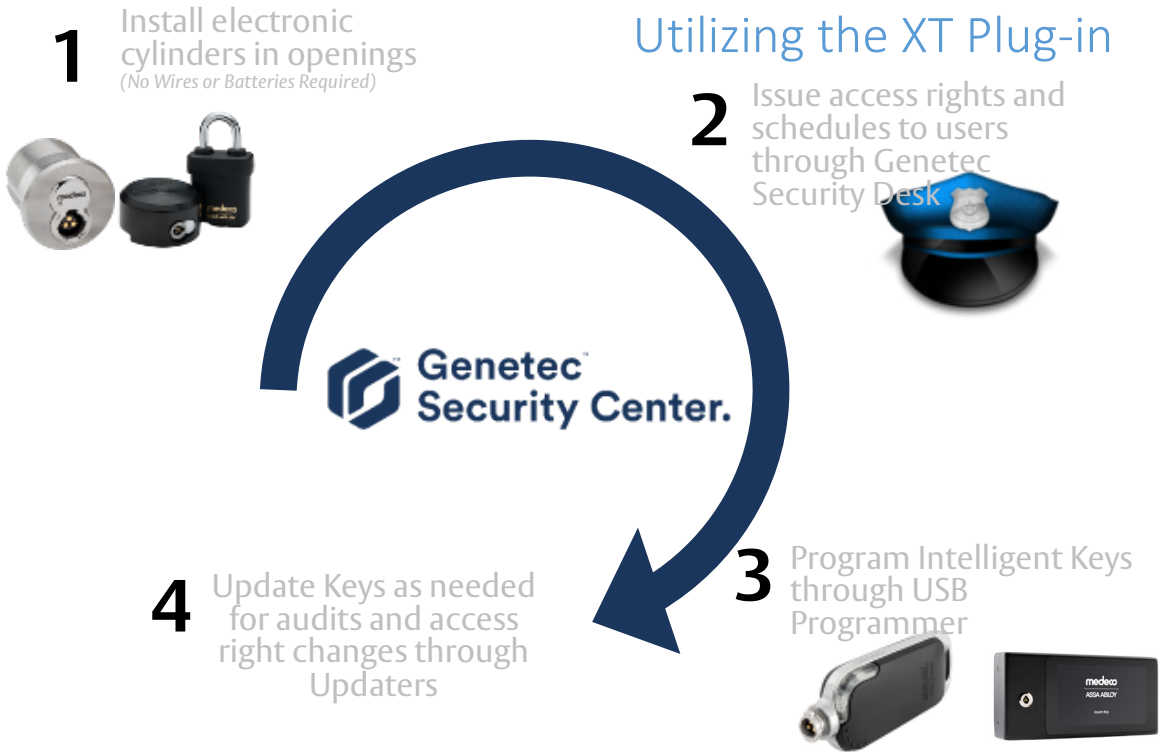
From Genetec/Genetec partner?

- Purchase or upgrade to Security Center Version 5.7 sr6 or later
- Purchase of the XT Plug-in (GSC-1PMedecobuse)
- Customer pays a per-cylinder license. (GSC-IPOFFLINE-IL)
- Setup assistance

NOTE:

- No Medeco XT Software is required
- The current Medeco/Genetec plug-in allows use of all Medeco XT hardware except:
 1. The EA-100158 network Remote Programmer
 2. The EA-100177 (94-0306 bundle) Bluetooth key (requires the XT Air app)
 3. The EA-100125 handheld Bluetooth programmer
 4. The XT SPC Key Cabinets
- System # C0973 is reserved for Genetec demo hardware only. There should be no End-User system using this system number.

Genetec™ Integration (cont.)



Notes

The ASSA ABLOY Group is the global leader in access solutions. Every day, we help billions of people experience a more open world.

ASSA ABLOY Opening Solutions leads the development within door openings and products for access solutions in homes, businesses and institutions. Our offering includes doors, frames, door and window hardware, locks, perimeter fencing, access control and service.

medeco[®]
ASSA ABLOY

Medeco U.S.
3625 Alleghany Drive
P.O. Box 3075
Salem, Virginia 24153-0330
Customer Service
1-877-633-3261
www.medeco.com

Medeco Canada
160 Four Valley Drive
Vaughan, Ontario, L4K 4T9
Customer Service
1-888-633-3264

Patent pending and/or patent www.assaabloydss.com/patents

Medeco is a brand associated with ASSA ABLOY High Security Group, Inc., an ASSA ABLOY Group company. Copyright © 2021. ASSA ABLOY High Security Group, Inc. All rights reserved. Reproduction in whole or in part without the express written permission of ASSA ABLOY High Security Group, Inc. is prohibited.

2021.002-11/21