

All Weather Padlocks

The Medeco All Weather Padlock (AWP) offers the highest level of severe weather protection. The body is solid 303 stainless steel and is available with either stainless steel or boron shackles. A weatherproof cylinder seal cap, attached by a stainless steel cable, seals the cylinder from harsh environments. Multiple mechanical and Intelligent Key technologies are available.

The AWP is not only weatherproof, it is also a high security padlock when a Medeco 4 (M4) cylinder is included. M4 cylinders provide the benefit of patented key control and resistance to surreptitious attacks while both the Medeco CLIQ and Medeco XT cylinders add sophisticated audit and control features.



Patented Key Control

Protects against unauthorized duplication of keys.



Special Angled Key Cuts (HS Cylinder Models)

Requires a special key cutting machine and access to Medeco specific blanks, available in a variety of restrictions to support every need.



Can Be Master Keyed

Medeco can be master keyed into a system containing M4 or X4 mechanical as well as M³ CLIQ or XT Intelligent Key systems.



Protection From Shackle Attack

Hardened boron alloy steel shackles (5/16" and 7/16" diameters) provide strong resistance against cutting, sawing and prying. Available in both 1-7/8" and 2-3/8" or 1" and 2-1/2" lengths.



Protection From Physical Attack

M4 cylinders are UL 437 listed and resist drilling, forcing and other forms of physical attack.



Picking and Bumping Protection

M4 cylinders use cylinder side pins, a lift pin and a movable key element to engage a sidebar that prevents the key from turning until the elements are rotated and aligned in the correct position, protecting against bumping, picking and other attacks.

Benefits:

- 300 Series, solid, machined stainless steel body resists attack and corrosion
- 5/16" and 7/16" diameter, stainless steel and boron shackles
- 1-7/8", 2-3/8", 2", and 2-1/2" shackle lengths
- Padlocks are shipped with a weather proof cylinder seal cap attached by a stainless steel cable
- IP68 Environmental protection rating for harsh environments
- ASTM F883-13 rating for tensile pull, shock, plug pull, plug torque, cutting, and corrosion (salt fog)
- Vibration tested per MIL-STD-202G, method 201A
- Key retaining cylinder design
- O-ring sealed cap, cylinder, and shackles resist grime and water penetration at low temperatures

Applications:

The AWP series is designed for installations requiring service in harsh weather conditions. Applications include outdoor perimeter fencing, gates, tool cabinets, storage, and transportation cargo containers. Ideal for Intelligent Key cylinders in outdoor harsh environments.

Warranty:

Warranted for two (2) years against manufacturer's defects. See the Medeco limited warranty for full details.

Finishes:

The padlock comes in a standard industrial stainless steel finish and the cylinders are furnished in the satin brass finish.

Available Key Technologies:

Mechanical:

- M4/M4 BiLevel
- M³/M³ BiLevel
- X4

- Medeco Biaxial*
- * Medeco Biaxial requires extended throat key blank

Intelligent Key:

- Medeco XT
- M³ CLIQ
- X4 CLIQ

How to Order AWP Series Padlocks:

Complete part numbers are required for all orders. To determine the correct part number, fill in the “Xs” in sequential order.

1 **5005511 base part # example**

Refer to pages 132-133 for descriptions and technical specifications to find the corresponding base part number.

<p>2</p> <p>H technology</p> <p>H = M4 P = M4 BiLevel T = M³ J = M³ BiLevel S = M³ CLIQ W = Biaxial N = X4 M = X4 CLIQ G = XT</p>	<p>3</p> <p>26 finish</p> <p>26 finish only.</p>	<p>4</p> <p>M4 keyway</p> <p>Insert keyway if known or contact Customer Service for help.</p>	<p>5</p> <p>P pinning</p> <p>S = Sub-Assembled (Uncombined) N = Sub-assembled, – No side pins (M4 only) – No slider (M3 only) P = Pinned (Combined) M = Master Keyed R = Master Keyed – blade and side pins (M4 only)</p>	<p>6</p> <p>624 side pin code</p> <p>(M4 only)</p> <p>Insert side pin code if known or contact Customer Service for help.</p>
--	--	---	---	--

BUILD AN AWP SERIES PADLOCK BASE PART #

50 X 05XXX

<p>Prefix</p>	<p>Shackle (Diameter), Material, Clearance</p> <p>511 = 5/16", SS, 1-7/8" 521 = 5/16", SS, 2-3/8" 531 = 5/16", Boron, 1-7/8" 541 = 5/16", Boron, 2-3/8" 711 = 7/16", SS, 2" 721 = 7/16", SS, 2-1/2" 731 = 7/16", Boron, 2" 741 = 7/16", Boron, 2-1/2"</p>
---------------	---

*AWP with mechanical cylinder requires the use of extended shoulder key blanks.
Medeco³ use KY3366XX or KY3466XX.
Original/Biaxial use KY1866XX or KY2266XX.

For legacy technology pricing, call Customer Service or visit Medeco.com.

All Weather Padlock with 5/16" Shackle*

Description	Part Number	M4	M3	X4
AWP 5/16" diameter SS shackle, 1-7/8" clearance	5005511 (P)			
	5005511 (S)			
AWP 5/16" diameter SS shackle, 2-3/8" clearance	5005521 (P)			
	5005521 (S)			
AWP 5/16" diameter Boron shackle, 1-7/8" clearance	5005531 (P)			
	5005531 (S)			
AWP 5/16" diameter Boron shackle, 2-3/8" clearance	5005541 (P)			
	5005541 (S)			

All Weather Padlock with 7/16" Shackle*

Description	Part Number	M4	M3	X4
AWP 7/16" diameter SS shackle, 2" clearance	5005711 (P)			
	5005711 (S)			
AWP 7/16" diameter SS shackle, 2-1/2" clearance	5005721 (P)			
	5005721 (S)			
AWP 7/16" diameter Boron shackle, 2" clearance	5005731 (P)			
	5005731 (S)			
AWP 7/16" diameter Boron shackle, 2-1/2" clearance	5005741 (P)			
	5005741 (S)			

*AWP with mechanical cylinder requires the use of extended shoulder key blanks.

Medeco³ use KY3366XX or KY3466XX.
Original/Biaxial use KY1866XX or KY2266XX.

All Weather Padlock - No Cylinder

Description	Part Number	Price
AWP 5/16" dia SS shackle, Less Cyl, 1-7/8" clearance	50-0551L	
AWP 5/16" dia SS shackle, Less Cyl, 2-3/8" clearance	50-0552L	
AWP 5/16" dia Boron shackle, Less Cyl, 1-7/8" clearance	50-0553L	
AWP 5/16" dia Boron shackle, Less Cyl, 2-3/8" clearance	50-0554L	
AWP 5/16" dia SS shackle, Less Cyl, 4" clearance	50-0555L	
AWP 7/16" dia SS shackle, Less Cyl, 2" clearance	50-0571L	
AWP 7/16" dia SS shackle, Less Cyl, 2-1/2" clearance	50-0572L	
AWP 7/16" dia Boron shackle, Less Cyl, 2" clearance	50-0573L	
AWP 7/16" dia Boron shackle, Less Cyl, 2-1/2" clearance	50-0574L	

All Weather Padlock Cylinders

Description	Part Number	M4	M3	X4
6 Pin Cylinder, KIK type for AWP Series Padlock	510800 (P)			
(26 finish only)	510800 (S)			

Components for All Weather Padlocks

Description	Part Number	Price
Thumbturn Cap Replacement Kit	94-0316	
5/16" AWP O-ring Seal Kit	94-0317-516	
7/16" AWP O-ring Seal Kit	94-0317-716	
Wire Assembly Spacer	CP-160910	
Wire Assembly	CP-287720	
Seal Installation Tool	94-0318	
Wire Assembly Screw	CP-014213-061	
Set Screw	CP-014642-591	
Shackle Locking Balls	CP-250180	
Allen Wrench 2.5 mm	CP-287770	

Shackles for All Weather Padlocks

Description	Boron Alloy Steel		Stainless Steel	
	Part Number	Price	Part Number	Price
Standard Shackle for AWP Padlock, 1-7/8" Shackle Clearance x 5/16" Diameter	CP-144270		CP-144230	
Extra Length Shackle for AWP Padlock, 2-3/8" Shackle Clearance x 5/16" Diameter	CP-144280		CP-144240	
Standard Shackle for AWP Padlock, 2" Shackle Clearance x 7/16" Diameter	CP-144290		CP-144250	
Extra Length Shackle for AWP Padlock, 2-1/2" Shackle Clearance x 7/16" Diameter	CP-144300		CP-144260	
5/16" dia, SS, shackle for AWP, 4" clearance			CP-145040	

System Series Padlocks

The Medeco® System Series padlock offers a high security solution for a multitude of applications and is available in two distinctive body styles, an indoor/outdoor weather resistant design or with a shrouded shackle. Both models utilize a boron alloy steel shackle which provides protection against cutting and increased tensile strength to resist pulling attacks. The boron alloy steel also ensures that the shackle has an exceptional degree of ductility and is not brittle. The cylinder itself uses hardened, stainless steel inserts to provide the ultimate defense against drilling, pulling and other forms of vandal attack. All Medeco 4 (M4) keys and locks are protected under patent, trademark, and copyright laws. M4 keys may only be duplicated by Medeco® or by a Medeco® authorized sales outlet, and only at your request.



Patented Key Control

Protects against unauthorized duplication of your keys.



Protection From Physical Attack

M4 padlock cylinders are UL 437 listed and stand up to drilling, picking and other forms of physical attack.



Proprietary Deadlocking Shackle

Boron alloy steel shackles protect against cutting and pulling attacks.



Can Be Master Keyed

Medeco System Series Padlocks can be master keyed into a system containing M4 and M4 BiLevel, X4, and the CLIQ Intelligent Key system.



Available in Intelligent Key System

System Series Padlocks are also available with the Medeco CLIQ Intelligent Key system for Loss & Liability control.



Special Angle Cut Keys

Requires a special key cutting machine and access to Medeco specific blanks, available in a variety of restrictions to support every need.



Picking and Bumping Protection

M4 cylinders use cylinder side pins, a lift pin and a movable key element to engage a sidebar that prevents the key from turning until the elements are rotated and aligned in the correct position, protecting against bumping, picking and other attacks.

Technical Features:

- Available with either a 5/16 inch or a 7/16 inch shackle diameter.
- Available in Indoor/Outdoor weather resistant design or with a shrouded shackle.
- Extended shackles available for Indoor/Outdoor padlocks only.
- The shrouded shackle design provides extra shackle protection against cutting attacks.
- All Medeco® cylinders are constructed of durable machined brass components, designed to last the life of your equipment.
- Boron alloy steel shackle which protects against cutting and pulling attacks.
- Available in a variety of different shackle lengths.

Applications:

Used in a variety of different indoor or outdoor applications where high security and key control are a primary concern.

Warranty:

Warranted for two (2) years against manufacturer's defects. See the Medeco® limited warranty for full details.

Finishes:

The padlock comes in a standard black body cover and the cylinders are furnished in satin brass finish.

Available Key Technologies:

Mechanical:

- M4
- M³/M³ BiLevel
- X4

Intelligent Key:

- M³ CLIQ
- Classic CLIQ
- Medeco XT
- X4 CLIQ

How to Order System Series Padlocks:

Complete part numbers are required for all orders. To determine the correct part number, fill in the “Xs” in sequential order.

1 **5451500 base part # example**

Refer to pages 136-138 for descriptions and technical specifications to find the corresponding base part number.

<p>2</p> <p style="text-align: center;">H technology</p> <p>H = M4 P = M4 BiLevel T = M³ J = M³ BiLevel S = M³ CLIQ W = Biaxial N = X4 M = X4 CLIQ G = XT</p>	<p>3</p> <p style="text-align: center;">06 finish</p> <p>Insert 06 for Satin Brass finish.</p> <p><i>See inside back cover of the catalog for all finish options.</i></p>	<p>4</p> <p style="text-align: center;">M4 keyway</p> <p>Insert keyway if known or contact Customer Service for help.</p>	<p>5</p> <p style="text-align: center;">P pinning</p> <p>S = Sub-Assembled (Uncombined) N = Sub-assembled, – No side pins (M4 only) – No slider (M3 only) P = Pinned (Combined) M = Master Keyed R = Master Keyed – blade and side pins (M4 only)</p>	<p>6</p> <p style="text-align: center;">624 side pin code (M4 only)</p> <p>Insert side pin code if known or contact Customer Service for help.</p>
--	---	---	---	---

BUILD A SYSTEM SERIES PADLOCK BASE PART

54XXXX X X

<p>Prefix</p> <p>Shackle (Diameter), Feature, Clearance</p> <p>315 = 5/16" Diameter, Weather, 1-1/8" SFIC 31F = 5/16" Diameter, Weather, 2-3/8" SFIC 335 = 5/16" Diameter, Weather, 1-1/8" SFIC 7 Pin 33F = 5/16" Diameter, Weather, 2-3/8" SFIC 7 Pin 515 = 5/16" Diameter, Weather, 1-1/8" KIK 51F = 5/16" Diameter, Weather, 2-3/8" KIK 525 = 5/16" Diameter, Shrouded, 3/4" KIK 615 = 5/16" Diameter, Weather, 1-1/8" LFIC 61F = 5/16" Diameter, Weather, 2-3/8" LFIC 715 = 7/16" Diameter, Weather, 1-3/8" KIK 71F = 7/16" Diameter, Weather, 1-7/8" KIK 725 = 7/16" Diameter, Shrouded, 3/4" KIK</p>	<p>Standard Options</p> <p>Blank = None T = Thick Head (SFIC Only)</p> <p>Shackle Material</p> <p>0 = Boron Alloy Steel 1 = Stainless Steel</p>	<p>Key Function</p> <p>0 = Non-Key Retaining K = Less Cylinder (Key Retaining) L = Less Cylinder (Non-Key Retaining) R = Key Retaining</p>
--	---	---

For legacy technology pricing, call Customer Service or visit Medeco.com.

Indoor/Outdoor Padlock, 5/16" Shackle -KIK

Description	Part Number	M4	M4 BiLevel	M3	M3 BiLevel	X4
Indoor/Outdoor Padlock, Non-Key Retaining, 1-1/8" Shackle Clearance, With Cylinder	5451500 (P)					
	5451500 (S)					
Indoor/Outdoor Padlock, Key Retaining, 1-1/8" Shackle Clearance, With Cylinder	54515R0 (P)					
	54515R0 (S)					
Indoor/Outdoor Padlock, Non-Key Retaining, 2-3/8" Shackle Clearance, With Cylinder	5451F00 (P)					
	5451F00 (S)					
Indoor/Outdoor Padlock, Key Retaining, 2-3/8" Shackle Clearance, With Cylinder	5451FR0 (P)					
	5451FR0 (S)					
Indoor/Outdoor Padlock, Key Retaining, 1-1/8" Shackle Clearance, Less Cylinder	54515K0					
Indoor/Outdoor Padlock, Non-Key Retaining, 1-1/8" Shackle Clearance, Less Cylinder	54515L0					
Indoor/Outdoor Padlock, Key Retaining, 2-3/8" Shackle Clearance, Less Cylinder	5451FK0					
Indoor/Outdoor Padlock, Non-Key Retaining, 2-3/8" Shackle Clearance, Less Cylinder	5451FL0					

Indoor/Outdoor Padlock, 5/16" Shackle -6 Pin LFIC

Description	Part Number	M4	M4 BiLevel	M3	M3 BiLevel
Indoor/Outdoor Padlock, Non-Key Retaining, 1-1/8" Shackle Clearance, With Cylinder	5461500 (P)				
	5461500 (S)				
Indoor/Outdoor Padlock, Key Retaining, 1-1/8" Shackle Clearance, With Cylinder	54615R0 (P)				
	54615R0 (S)				
Indoor/Outdoor Padlock, Non-Key Retaining, 2-3/8" Shackle Clearance, With Cylinder	5461F00 (P)				
	5461F00 (S)				
Indoor/Outdoor Padlock, Key Retaining, 2-3/8" Shackle Clearance, With Cylinder	5461FR0 (P)				
	5461FR0 (S)				
Indoor/Outdoor Padlock, Key Retaining, 1-1/8" Shackle Clearance, Less Cylinder	54615K0				
Indoor/Outdoor Padlock, Non-Key Retaining, 1-1/8" Shackle Clearance, Less Cylinder	54615L0				
Indoor/Outdoor Padlock, Key Retaining, 2-3/8" Shackle Clearance, Less Cylinder	5461FK0				
Indoor/Outdoor Padlock, Non-Key Retaining, 2-3/8" Shackle Clearance, Less Cylinder	5461FL0				

(P) = Pinned (combined)

(S) = Sub-assembled (uncombined)

Surcharges for Master Keying, Custom Coining and Custom Stamping apply, see page 195.
Refer to the XT and CLIQ Intelligent Key sections for format availability and pricing.

Indoor/Outdoor Padlock, 5/16" Shackle -6 Pin SFIC

Description	Part Number	M4	M4 BiLevel	M3	M3 BiLevel	X4
Indoor/Outdoor Padlock, Non-Key Retaining, 1-1/8" Shackle Clearance, With Cylinder	5431500 (P)					
	5431500 (S)					
Indoor/Outdoor Padlock, Key Retaining, 1-1/8" Shackle Clearance, With Cylinder	54315R0 (P)					
	54315R0 (S)					
Indoor/Outdoor Padlock, Non-Key Retaining, 2-3/8" Shackle Clearance, With Cylinder	5431F00 (P)					
	5431F00 (S)					
Indoor/Outdoor Padlock, Key Retaining, 2-3/8" Shackle Clearance, With Cylinder	5431FR0 (P)					
	5431FR0 (S)					

Indoor/Outdoor Padlock, 5/16" Shackle -7 Pin SFIC

Description	Part Number	M4	M4 BiLevel	M3	M3 BiLevel	X4
Indoor/Outdoor Padlock, Non-Key Retaining, 1-1/8" Shackle Clearance, With Cylinder	5433500 (P)					
	5433500 (S)					
Indoor/Outdoor Padlock, Key Retaining, 1-1/8" Shackle Clearance, With Cylinder	54335R0 (P)					
	54335R0 (S)					
Indoor/Outdoor Padlock, Non-Key Retaining, 2-3/8" Shackle Clearance, With Cylinder	5433F00 (P)					
	5433F00 (S)					
Indoor/Outdoor Padlock, Key Retaining, 2-3/8" Shackle Clearance, With Cylinder	5433FR0 (P)					
	5433FR0 (S)					

Indoor/Outdoor Padlock, 5/16" Shackle -Less SFIC

Description	Part Number	Price
Indoor/Outdoor Padlock, Key Retaining, 1-1/8" Shackle Clearance, Less Cylinder	54315K0	
Indoor/Outdoor Padlock, Non-Key Retaining, 1-1/8" Shackle Clearance, Less Cylinder	54315L0	
Indoor/Outdoor Padlock, Key Retaining, 2-3/8" Shackle Clearance, Less Cylinder	5431FK0	
Indoor/Outdoor Padlock, Non-Key Retaining, 2-3/8" Shackle Clearance, Less Cylinder	5431FL0	

(P) = Pinned (combined)

(S) = Sub-assembled (uncombined)

Surcharges for Master Keying, Custom Coining and Custom Stamping apply, see page 195.
Refer to the XT and CLIQ Intelligent Key sections for format availability and pricing.

Indoor/Outdoor Padlock, 7/16" Shackle -KIK

Description	Part Number	M4	M4 BiLevel	M3	M3 BiLevel	X4
Indoor/Outdoor Padlock, Non-Key Retaining, 1-3/8" Shackle Clearance, With Cylinder	5471500 (P)					
	5471500 (S)					
Indoor/Outdoor Padlock, Key Retaining, 1-3/8" Shackle Clearance, With Cylinder	54715R0 (P)					
	54715R0 (S)					
Indoor/Outdoor Padlock, Non-Key Retaining, 1-7/8" Shackle Clearance, With Cylinder	5471F00 (P)					
	5471F00 (S)					
Indoor/Outdoor Padlock, Key Retaining, 1-7/8" Shackle Clearance, With Cylinder	5471FR0 (P)					
	5471FR0 (S)					
Indoor/Outdoor Padlock, Key Retaining, 1-3/8" Shackle Clearance, Less Cylinder	54715K0					
Indoor/Outdoor Padlock, Non-Key Retaining, 1-3/8" Shackle Clearance, Less Cylinder	54715L0					
Indoor/Outdoor Padlock, Key Retaining, 1-7/8" Shackle Clearance, Less Cylinder	5471FK0					
Indoor/Outdoor Padlock, Non-Key Retaining, 1-7/8" Shackle Clearance, Less Cylinder	5471FL0					

Shrouded Padlock, 5/16" Shackle - KIK

Description	Part Number	M4	M4 BiLevel	M3	M3 BiLevel	X4
Shrouded Padlock, Non-Key Retaining, 3/4" Shackle Clearance, With Cylinder	5452500 (P)					
	5452500 (S)					
Shrouded Padlock, Key Retaining, 3/4" Shackle Clearance, With Cylinder	54525R0 (P)					
	54525R0 (S)					
Shrouded Padlock, Key Retaining, 3/4" Shackle Clearance, Less Cylinder	54525K0					
Shrouded Padlock, Non-Key Retaining, 3/4" Shackle Clearance, Less Cylinder	54525L0					

Shrouded Padlock, 7/16" Shackle - KIK

Description	Part Number	M4	M4 BiLevel	M3	M3 BiLevel	X4
Shrouded Padlock, Non-Key Retaining, 3/4" Shackle Clearance, With Cylinder	5472500 (P)					
	5472500 (S)					
Shrouded Padlock, Key Retaining, 3/4" Shackle Clearance, With Cylinder	54725R0 (P)					
	54725R0 (S)					
Shrouded Padlock, Key Retaining, 3/4" Shackle Clearance, Less Cylinder	54725K0					
Shrouded Padlock, Non-Key Retaining, 3/4" Shackle Clearance, Less Cylinder	54725L0					

(P) = Pinned (combined)

(S) = Sub-assembled (uncombined)

Surcharges for Master Keying, Custom Coining and Custom Stamping apply, see page 195.
Refer to the XT and CLIQ Intelligent Key sections for format availability and pricing.

50 and 52 Series Brass Body Padlocks

The Medeco 50 Series and 52 Series brass padlocks are available in two versions. The 50 Series Padlock is available with a removable cylinder or interchangeable core. The 52 Series Padlock is designed to be keyed with Medeco's 60 Series cam locks and switch locks.

Both padlocks can accept cylinders and cores which are UL listed and virtually pickproof and drillproof. Mechanical cylinders provide the benefit of patented key control and resistance to physical attacks. The padlock cases are constructed of brass with stainless steel shackles for corrosion protection or hardened steel for protection against sawing.



Patented Key Control

Protects against unauthorized duplication of keys.



Special Angled Key Cuts

Requires a special key cutting machine and access to Medeco specific blanks, available in a variety of restrictions to support every need.



Can Be Master Keyed

50 and 52 Series Padlocks can be master keyed into the respective key technologies listed below.



Protection From Shackle Attack

The hardened boron alloy steel shackles provide strong resistance against cutting, sawing and prying. The stainless steel shackle protect against corrosion.



Protection From Physical Attack

M4 cylinders are UL 437 listed and resists drilling, picking and other forms of physical attack.



Picking and Bumping Protection

M4 cylinders use cylinder side pins, a lift pin and a movable key element to engage a sidebar that prevents the key from turning until the elements are rotated and aligned in the correct position, protecting against bumping, picking and other attacks.

Benefits:

- Optional dust cover protects keyway of cylinder from weather conditions
- Available keyed differently, keyed alike, or master keyed to your specific needs
- 50 Series and 52 Series padlocks are available in the non-key retained or key retained functions.
- Toe and heel deadbolt locking action
- The chain and clevis, designed for a more permanent attachment, are constructed of carbon steel with a zinc plating

Applications:

Medeco 50 and 52 Series padlocks can be used in a variety of indoor or outdoor applications including industrial safekeeping, perimeter gates, cargo vehicles, vending machines, gun cabinets, and more.

Warranty:

Warranted for two (2) years against manufacturer's defects. See the Medeco limited warranty for full details.

Finishes:

- 50 Series – Satin Brass (06) only
- 52 Series – Satin Chrome (26) only

50 Series Available Key Technologies:

Mechanical:

- M4
- M³
- X4 (LFIC only)
- Original
- Biaxial

Intelligent Key:

- M³ CLIQ (LFIC only)

52 Series Available Key Technologies:

Mechanical:

- M³
- Original
- Biaxial

How to Order a 50 Series Padlock:

Complete part numbers are required for all orders. To determine the correct part number, fill in the "Xs" in sequential order.

1

50022010 base part # example

Refer to pages 142 for descriptions and technical specifications to find the corresponding base part number.

2

H technology

H = M4
T = M³
W = Biaxial
- = Original
S = M³ CLIQ

3

06 finish

Insert 06 for
Satin Brass finish.

*See inside back cover
of the catalog for
all finish options.*

4

M4 keyway

Insert keyway if known
or contact Customer
Service for help.

5

P pinning

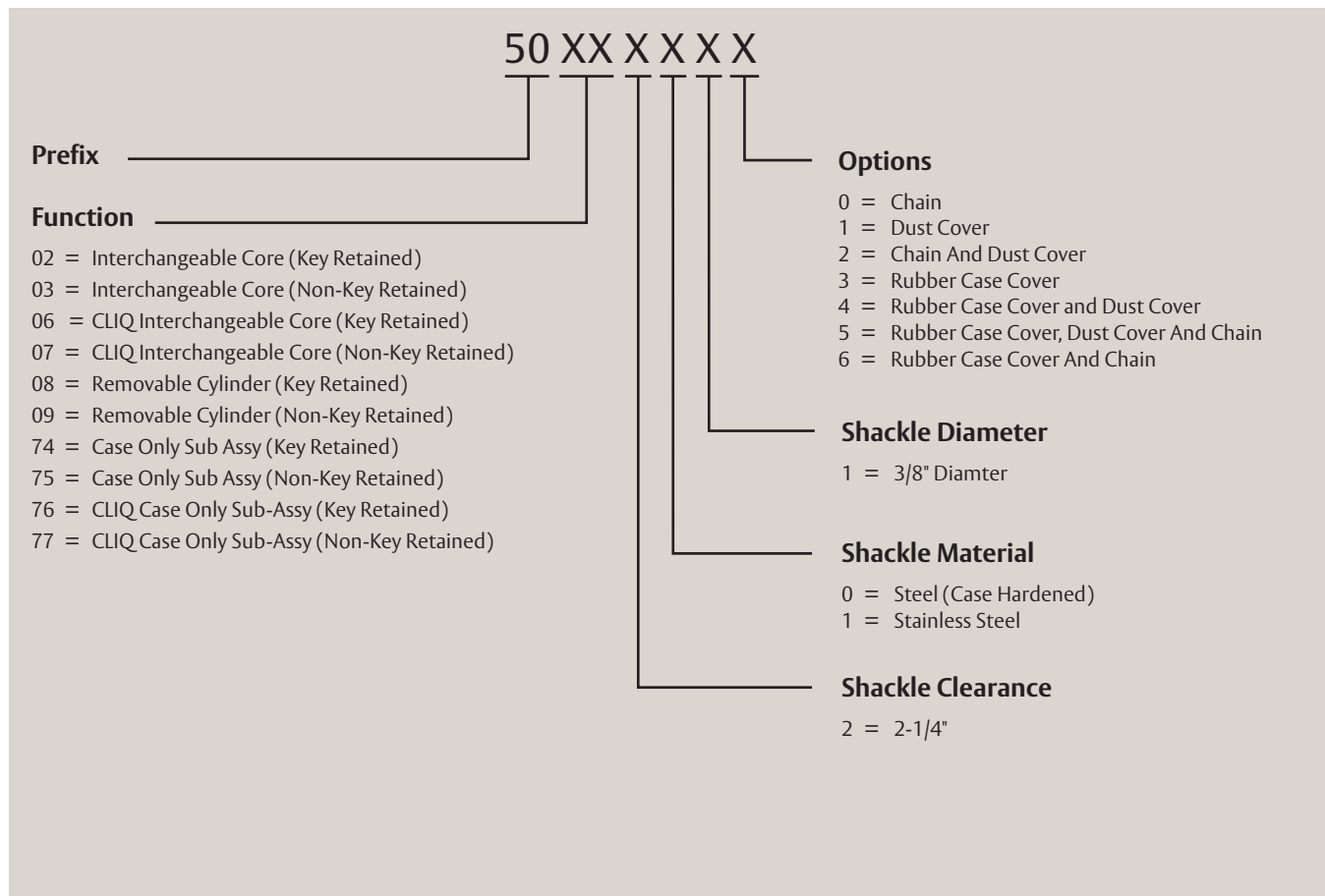
S = Sub-Assembled
(Uncombined)
N = Sub-assembled,
– No side pins
(M4 only)
– No slider
(M3 only)
P = Pinned
(Combined)
M = Master Keyed
R = Master Keyed
– blade and side pins
(M4 only)

6

624 side pin code

(M4 only)
Insert side pin code
if known or contact
Customer Service
for help.

BUILD A 50 SERIES BRASS PADLOCK BASE PART



For legacy technology pricing, call Customer Service or visit Medeco.com.

How to Order a 52 Series Padlock:

Complete part numbers are required for all orders. To determine the correct part number, fill in the "Xs" in sequential order.

1

52620200 base part # example

Refer to pages 143-144 for descriptions and technical specifications to find the corresponding base part number.

<div style="text-align: center; font-weight: bold; font-size: 24px; margin-bottom: 10px;">2</div> <h3 style="text-align: center; margin: 0;">H technology</h3> <p style="margin-top: 20px;">T = M³ W = Biaxial - = Original S = M³ CLIQ</p>	<div style="text-align: center; font-weight: bold; font-size: 24px; margin-bottom: 10px;">3</div> <h3 style="text-align: center; margin: 0;">06 finish</h3> <p style="margin-top: 20px; text-align: center;">Insert 06 for Satin Brass finish.</p> <p style="margin-top: 10px; text-align: center;"><i>See inside back cover of the catalog for all finish options.</i></p>	<div style="text-align: center; font-weight: bold; font-size: 24px; margin-bottom: 10px;">4</div> <h3 style="text-align: center; margin: 0;">M4 keyway</h3> <p style="margin-top: 20px; text-align: center;">Insert keyway if known or contact Customer Service for help.</p>	<div style="text-align: center; font-weight: bold; font-size: 24px; margin-bottom: 10px;">5</div> <h3 style="text-align: center; margin: 0;">P pinning</h3> <p style="margin-top: 20px;">S = Sub-Assembled (Uncombined) N = Sub-assembled, - No side pins (M4 only) - No slider (M3 only) P = Pinned (Combined) M = Master Keyed R = Master Keyed - blade and side pins (M4 only)</p>
---	---	---	---

BUILD A 52 SERIES BRASS PADLOCK BASE PART

52 X X X X XX

<p>Prefix _____</p> <p>Body Type _____</p> <p>6 = Brass Body 2-1/16" X 2-1/4"</p> <p>Shackle _____</p> <p>0 = 7/16" Ø X 1-3/8" 1 = 7/16" Ø X 1-7/8" 2 = 5/16" Ø X 1-1/8" 3 = 5/16" Ø X 2-3/8"</p> <p>Shackle Material _____</p> <p>0 = Hardened Steel 1 = Stainless Steel</p>	<p>Assembly Variations</p> <p>00 = Standard *01 = Rubber Boot 10 = Dust Cover *11 = Dust Cover and Boot</p> <p>*NOTE: For 7/16" Shackle Only</p>	<p>Type of Cylinder</p> <p>0 = Key Retaining No Cylinder 1 = Key Retaining With Cylinder 2 = Key Retaining Removable Core Less Cylinder</p>
---	---	--

For legacy technology pricing, call Customer Service or visit Medeco.com.

50 Series Brass Body Padlocks

Description	Part Number	M4	M3	X4
I/C Core Brass Padlock, 2-1/4" Shackle Clearance, Hardened Steel, Key Retaining	5002201 (P)			
	5002201 (S)			
I/C Core Brass Padlock, 2-1/4" Shackle Clearance, Stainless Steel, Key Retaining	5002211 (P)			
	5002211 (S)			
I/C Core Brass Padlock, 2-1/4" Shackle Clearance, Hardened Steel, Non-key Retaining	5003201 (P)			
	5003201 (S)			
I/C Core Brass Padlock, 2-1/4" Shackle Clearance, Stainless Steel, Non-key Retaining	5003211 (P)			
	5003211 (S)			
Removeable Cylinder Brass Padlock, 2-1/4" Shackle Clearance, Hardened Steel, Key Retaining	5008201 (P)			
	5008201 (S)			
Removeable Cylinder Brass Padlock, 2-1/4" Shackle Clearance, Stainless Steel, Key Retaining	5008211 (P)			
	5008211 (S)			
Removeable Cylinder Brass Padlock, 2-1/4" Shackle Clearance, Hardened Steel, Non-key Retaining	5009201 (P)			
	5009201 (S)			
Removeable Cylinder Brass Padlock, 2-1/4" Shackle Clearance, Stainless Steel, Non-key Retaining	5009211 (P)			
	5009211 (S)			
Brass Padlock, 2-1/4" Shackle Clearance, Hardened Steel, Key Retaining, Less Cylinder	50-74201			
Brass Padlock, 2-1/4" Shackle Clearance, Stainless Steel, Key Retaining, Less Cylinder	50-74211			
Brass Padlock, 2-1/4" Shackle Clearance, Hardened Steel, Non-key Retaining, Less Cylinder	50-75201			
Brass Padlock, 2-1/4" Shackle Clearance, Stainless Steel, Non-key Retaining, Less Cylinder	50-75211			

(P) = Pinned (combined)

(S) = Sub-assembled (uncombined)

Surcharges for Master Keying, Custom Coining and Custom Stamping apply, see page 195.
Refer to the XT and CLIQ Intelligent Key sections for format availability and pricing.

52 Series Padlock, 5/16" Shackle

Description	Part Number	M3
1-1/8" Clearance, Boron Alloy Shackle	526201 (P)	
	526201 (S)	
2-3/8" Clearance, Boron Alloy Shackle	526301 (P)	
	526301 (S)	
1-1/8" Clearance, Boron Alloy Shackle, Less Cylinder	526200	
2-3/8" Clearance, Boron Alloy Shackle, Less Cylinder	526300	
1-1/8" Clearance, Stainless Steel Shackle	526211 (P)	
	526211 (S)	
2-3/8" Clearance, Stainless Steel Shackle	526311 (P)	
	526311 (S)	
1-1/8" Clearance, Stainless Steel Shackle, Less Cylinder	526210	
2-3/8" Clearance, Stainless Steel Shackle, Less Cylinder	526310	

*Padlock body is solid brass with 26 plated finish.

52 Series Padlock, 5/16" Shackle, Removable Core

Description	Part Number	M3
1-1/8" Clearance, Boron Alloy Shackle, Removable Core, Less Cylinder	52-6202	
2-3/8" Clearance, Boron Alloy Shackle, Removable Core, Less Cylinder	52-6302	
1-1/8" Clearance, Stainless Steel Shackle, Removable Core, Less Cylinder	52-6212	
2-3/8" Clearance, Stainless Steel Shackle, Removable Core, Less Cylinder	52-6312	

*Padlock body is solid brass with 26 plated finish.

Note: 52-6 Series padlocks use a 5 pin/4 level 60 Series cylinder and can be keyed into a system utilizing cam and switch locks.

52 Series Padlock, 7/16" Shackle

Description	Part Number	M3
1-3/8" Clearance, Boron Alloy Shackle	526001 (P)	
	526001 (S)	
1-7/8" Clearance, Boron Alloy Shackle	526101 (P)	
	526101 (S)	
1-3/8" Clearance, Boron Alloy Shackle, Less Cylinder	526000	
1-7/8" Clearance, Boron Alloy Shackle, Less Cylinder	526100	
1-3/8" Clearance, Stainless Steel Shackle	526011 (P)	
	526011 (S)	
1-7/8" Clearance, Stainless Steel Shackle	526111 (P)	
	526111 (S)	
1-3/8" Clearance, Stainless Steel Shackle, Less Cylinder	526010	
1-7/8" Clearance, Stainless Steel Shackle, Less Cylinder	526110	

* Padlock body is solid brass with 26 plated finish.

52 Series Padlock, 7/16" Shackle, Removable Core

Description	Part Number	M3
1-3/8" Clearance, Boron Alloy Shackle, RemovableCore, Less Cylinder	526002	
1-7/8" Clearance, Boron Alloy Shackle, RemovableCore, Less Cylinder	526102	
1-3/8" Clearance, Stainless Steel Shackle, Removable Core, Less Cylinder	526012	
1-7/8" Clearance, Stainless Steel Shackle, Removable Core, Less Cylinder	526112	

* Padlock body is solid brass with 26 plated finish.

52 series Padlocks Cover Options: 00 = Standard, 01 = Case Cover, 10 = Dust Cover

Note: 52-6 Series padlocks use 5 pin/4 level 60 Series cylinders and can be keyed into a system utilizing cam and switch locks.

(P) = Pinned (combined)

(S) = Sub-assembled (uncombined)

Surcharges for Master Keying, Custom Coining and Custom Stamping apply, see page 195.
Refer to the XT and CLIQ Intelligent Key sections for format availability and pricing.

Hockey Puck Padlocks



Medeco Hockey Puck style padlocks are the go-to choice wherever shackle attacks are a concern.

The reimagined padlock design now accepts industry-standard Large Format Interchangeable Cores (LFIC) and key-in-knob/lever cylinders. Pre-machined holes in the back allow for flexible mounting options. When combined with a mounted hasp the padlock remains attached, preventing the loss of the padlock.

The 304 stainless steel body provides the highest combination of drilling resistance, cutting resistance, and weatherability. The shackle-less design with a hidden bolt provides the highest level of protection against bolt cutter attacks.

Hockey puck padlocks are completely serviceable and can be re-keyed in case of lost or stolen keys. They can be ordered in a variety of different cylinder technologies. This includes in a high security format (Medeco 4) and Medeco XT for access control, audit trails, and much more. Hockey Puck Padlocks with X4 and M4 cylinders also offer patent protected key control.



Patented Key Control

Protects against unauthorized duplication of your keys.



Protection From Physical Attack

M4 cylinders use cylinder side pins, a lift pin and a movable key element to engage a sidebar that prevents the key from turning until the elements are rotated and aligned in the correct position, protecting against bumping, picking and other attacks.



Can Be Master Keyed

Medeco Hockey Puck Padlocks can be master keyed into existing Medeco 10 Series products.



Available in Intelligent Key

Medeco's Hockey Puck Padlocks are also available with the Medeco XT Intelligent Key system for Loss & Liability control.



Special Angle Cut Keys

Requires a special key cutting machine and access to Medeco specific blanks, available in a variety of restrictions to support every need.



Picking and Bumping Protection

M4 cylinders use a sidebar that prevent the key from rotating until it is elevated, rotated and aligned in the correct position. This feature protects against bumping and picking attacks.

Technical Features:

- Body width: 2-7/8"
- Shackle: 3/8" diameter
- 304 stainless steel body
- LFIC and key-in-knob/lever cylinders
- Requires a key to relock
- Flat-back design or step-back design
- Shackle-less design with a hidden bolt for a high level of protection against bolt cutter attacks
- Pre-machined holes in the back allow for flexible mounting options

Applications:

- Gaming machines/gaming padlocks
- Vending machines
- Service vehicles/vans
- Storage cabinets/containers and shipping containers
- Gates

Available Key Technologies:

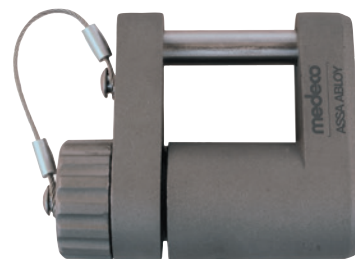
- M4/M4 BiLevel - XT
- M³/M³ BiLevel - CLIQ
- X4

52-9 Series Hockey Puck Padlock

Description	Part Number	M4	M4 BiLevel	M3	M3 BiLevel	X4
Hockey Puck Padlock with KIK/KIL	5292000 (P)					
6 Pin Cylinder (flat back)	5292000 (S)					
Hockey Puck Padlock with KIK/KIL	5292001 (P)					
6 Pin Cylinder (step back)	5292001 (S)					
Hockey Puck Padlock with LFIC	5292100 (P)					
6 Pin Cylinder (flat back)	5292100 (S)					
Hockey Puck Padlock with LFIC	5292101 (P)					
6 Pin Cylinder (step back)	5292101 (S)					

G8R Padlocks

Medeco® offers a variety of High Security Padlocks that are designed to accept both mechanical and Intelligent Key cylinders. With its tough, weather resistant construction, this is the padlock of choice for extreme environments such as trailers, cargo containers, and gates. The Medeco® G8R body is constructed of solid stainless steel. You can choose from either a stainless steel shackle for maximum corrosion resistance, or hardened steel to withstand severe physical attack. Each padlock includes a weather seal cap attached by a cable. The Medeco® G8R will accept either an Intelligent Key or mechanical t-handle cylinder. The mechanical cylinders provide the benefit of patented key control and pick resistance. Intelligent Keys sophisticated audit and control features transforming the G8R into a portable access control system for extreme environments.



Patented Key Control

Protects against unauthorized duplication of your keys.



Protection From Physical Attack

Medeco³ padlock cylinders are UL 437 listed and stand up to drilling, picking and other forms of physical attack. Available in either a hardened steel shackle to withstand severe physical attack or a stainless steel shackle for maximum corrosion resistance.



Weather Resistant Construction

Uses a weather seal cap, attached by a cable, to provide protection from water and road grime.



Available in Intelligent Key

Medeco G8R Padlocks are also available with Medeco Intelligent Key systems for Loss & Liability control.



Special Angle Cut Keys

Requires a special key cutting machine and access to Medeco specific blanks, available in a variety of restrictions to support every need.



Picking and Bumping Protection

Medeco³ cylinders use a sidebar that prevent the key from rotating until it is elevated, rotated and aligned in the correct position. This feature protects against bumping and picking attacks.

Technical Information:

- 300 series, cast stainless steel body.
- Padlock is sold less cylinder. Compatible with Medeco® mechanical and NEXGEN electronic t-handle cylinders.
- Padlocks are shipped with a weather seal cap attached by a steel cable. A finish plate is included for applications that do not require the weather seal cap.
- Sealed construction protects cylinders from water and road grime.
- Stainless steel body resists attack and corrosion.
- Shackles can be specified in stainless or hardened steel to fit your application.

Applications:

- The G8R Series was designed for locking installations requiring weather resistance and strong physical security. Applications include: cargo containers, trailer doors, gates, vending machines.

Warranty:

Warranted for two (2) years against manufacturer's defects. See the Medeco® limited warranty for full details

Available Key Technologies:

Mechanical:

- M³

Intelligent Key:

- Medeco XT
- Classic CLIQ
- Medeco Nexgen

G8R Series Padlock

Description	Part Number	Price
G8R Weather-tight Padlock, 5/16" Stainless Steel Shackle, less pop-out cylinder	52110040	
G8R Weather-tight Padlock, 5/16" Hardened Steel Shackle, less pop-out cylinder	52111040	
G8R Weather-tight Padlock, 7/16" Stainless Steel Shackle, less pop-out cylinder	52120040	
G8R Weather-tight Padlock, 7/16" Hardened Steel Shackle, less pop-out cylinder	52121040	
G8R cap and seal kit	94-0213	

G8R padlocks are sold less cylinder and use a cam lock style key with pop-out plug. Keys are charged separately for this style cylinder.

Experience a safer
and more open world

medeco
ASSA ABLOY

Padlock Cylinders

Description	Part Number	M4	M4 BiLevel	M3	M3 BiLevel	X4
5 Pin Cylinder (6 pin Medeco X4) for Hockey Puck Style Padlock sold after 9/2004 (KIK style cylinder)	2001600 (P)					
	2001600 (S)					
6 Pin Cylinder for LFIC Medeco Padlocks, 50 (Brass Body Series) & 54 Series	320201 (P)					
	320201 (S)					
Removeable Cylinder to fit 50 Series Brass Padlocks (Note - only available in 06 finish)	320202 (P)					
	320202 (S)					
6 Pin Cylinder for KIK Medeco Padlock, for 54 Series Padlocks	510600 (P)					
	510600 (S)					
5 Pin Spring Bolt Cylinder (non-key retaining), for G8R Padlock	960357 (P)					
	960357 (S)					
5 Pin Deadbolt Cylinder (key retaining), for G8R Padlock	960358 (P)					
	960358 (S)					
Spacer for use with 5 Pin Cylinders, for G8R Padlock	CP-160691					
5 Pin cylinder (cam lock style) for 52-6 padlocks	66418 (P)					
	66418 (S)					
5 Pin Removable plug for 52-6 padlocks	66391 (P)					
	66391 (S)					

Electronic padlock cylinders are available for many of the padlocks. Refer to the XT and CLIQ sections for specific part numbers and pricing.

Components

Description	Part Number	Price
Component Package for 54 Series Padlocks, NonKey Retaining. Includes CP-130510 Cylinder Extension/Actuator, Spring & Washer, CP-022030 Cylinder Retainer, CP-011511-000 Retainer Screw, CP-250140 Steel Ball Bearing	94-0199	
Cylinder Retainer Sleeve (Fits over Cylinder Bible Chamber & holds cylinder in padlock body)	CP-022030	
Retainer Screw, #6-32 UNC-2A x .312" length	CP-011511-000	
Cylinder Extension/Actuator, Non Key Retaining, Spring & Washer for 54 Series Padlocks	CP-130510	
Stainless Steel Ball Bearing for 54 Series Padlocks, .360" Diameter	CP-250140	
Cylinder Extension/Actuator, Key Retaining, for 54 Series Padlocks	CP-200720	
Chain Assembly for 50 Series Brass Padlocks	CP-280271	
Case Cover for 50 Series Brass Padlocks	CP-170250	
Shackle Spring for 50 Series Brass Padlocks	CP-030430	
Actuator Adaptor for 50 Series Brass Padlocks	CP-130101	
Locking Balls for 50 Series Brass Padlocks	CP-250040	
3/16" Cylinder Retaining Ball for 50 Series Brass Padlocks	CP-250030	
1/16" Hex Allen Wrench - Long Arm to use with 50 Series Brass Padlocks	94-0020	
Package for Sub-assembled 50 Series Brass Padlock, Includes: Set screws, retaining ball, Brass Pin Chamber Cover Chain, 7/16" Collar and Rivet, Eye Strap	94-0052	

(P) = Pinned (combined)
 (S) = Sub-assembled (uncombined)
 Surcharges for Master Keying, Custom Coining and Custom Stamping apply, see page 195.
 Refer to the XT and CLIQ Intelligent Key sections for format availability and pricing.

Shackles for Indoor/Outdoor Padlocks

Description	Boron Alloy Steel Part Number	Price	Stainless Steel Part Number	Price
Standard Shackle for 54-51 Indoor/Outdoor Padlock, 1-1/8" Shackle Clearance x 5/16" Diameter	CP-144120		CP-144180	
Extra Length Shackle for 54-51 Indoor/Outdoor Padlock, 2-3/8" Shackle Clearance x 5/16" Diameter	CP-144130		CP-144190	
Standard Shackle for 54-71 Indoor/Outdoor Padlock, 1-3/8" Shackle Clearance x 7/16" Diameter	CP-144150		CP-144210	
Extra Length Shackle for 54-71 Indoor/Outdoor Padlock, 1-7/8" Shackle Clearance x 7/16" Diameter	CP-144160		CP-144220	

Shackles for Shrouded Padlocks

Description	Boron Alloy Steel Part Number	Price	Stainless Steel Part Number	Price
Standard Shackle for 54-52 Shrouded Padlock, 3/4" Shackle Clearance x 5/16" Diameter	CP-144110		CP-144170	
Standard Shackle for 54-72 Shrouded Padlock, 3/4" Shackle Clearance x 7/16" Diameter	CP-144140		CP-144200	

Shackles for 50 Series Brass Padlocks

Description	Part Number	Price
2-1/4" Stainless Steel Shackle for 50 Series Brass Padlocks	CP-142543	
2-1/4" Hardened Steel Shackle for 50 Series Brass Padlocks	CP-142043	

Protector II Series Padlock Cylinder

Description	Part Number	M ³	BiLevel	X4	Biax/Orig	KeyMark
KIK style cylinder for Protector II	500020 (P)					
	500020 (S)					

Protector II Series Padlock Parts

Description	Part Number	Price
Disk For Standard Key In Knob Cylinder	CP-171011	
Disk For CLIQ Cylinder	CP-171021	
Disk For Medeco XT Cylinder	CP-171031	

(P) = Pinned (combined)

(S) = Sub-assembled (uncombined)

Surcharges for Master Keying, Custom Coining and Custom Stamping apply, see page 195.
Refer to the XT and CLIQ Intelligent Key sections for format availability and pricing.