

**MOEN®**

MOEN ACCESSORIES





### Bring A Perfectly Matched Room Together With Ease.

Whether you need towel bars for organization, grab bars for peace-of-mind, shelves for everyday items or robe hooks for everything else, Moen offers comprehensive suites of products designed to bring perfectly matched style and essential function to today's baths. Each collection's signature design details are carried throughout all pieces from the sink and shower, to the accessories and lighting, so you can select the look you want and know the style and finish will match to perfection.



**Moen® believes that water designs our life, and that's why we design for water. With every single product, we empower audiences to look at water, and all that it helps create, differently.**

In water and in design, the decadence can be found in the details. Our accessories are no exception. Just as water completes our world with power and beauty, our perfectly matched and coordinating bath accessories combine innovation and design to complete any look. Through smart features, stunning styles and inspiring experiences, Moen accessories are the confluence of form and function.



### Exceptional Durability Across Finishes

With finishes that are designed to last a lifetime, Moen® products set the standard for exceptional beauty, reliability and innovative design.

To view complete assortment and finishes for all SKUs reference the Moen Style Guide [MF1319] or visit [moen.com](https://www.moen.com).

### Products That Complete Your Bath

All of our bath accessory collections feature a towel ring, a robe hook, paper holder and both an 18-in. and a 24-in. towel bar. But there is so much more — tank levers, mirrors and glass shelves are offered in many collections.



### Knobs and Pulls

With our distinctive collection of knobs and pulls, you can create a perfectly matched kitchen or bath. Available in a selection of styles and finishes. See pages 24-25 for the complete product assortment of cabinet knobs and drawer pulls.



### Decorative Hotel Shelves

Kingsley®, Eva® and Iso™ Decorative Hotel Shelves help create the luxurious, coordinated styling of an upscale hotel in your own home.



### Tension Curved Shower Rod

Now you can add up to an additional 5.5-in. of elbow room to your shower without drilling holes in the wall. The Tension Curved Shower Rod delivers the extra space you want with the convenience of an easy install that requires no tools or drilling and takes just minutes.

### Who Knew One Little Product Could Make Switching Out Shower Curtains and Liners So Easy?

Double shower curtain rings stand out for their style, functionality and ease of use. Their unique offset design separates the decorative curtain from the liner, allowing the liner to be hidden from view.





## Must-Haves That Make The Room

### Perfectly Matched Storage

The Moen® Wynford™ Corner Shower Basket features a traditional style that tucks neatly into any corner and perfectly matches the gentle curves of Wynford faucets. Hang at any height or use multiple baskets to create a tower of convenient storage.

### Function and Form

Keep everyday essentials stylishly within reach. The Moen® Align® Swiveling Double Robe Hook comes in four on-trend finishes, Chrome, Brushed Nickel, Matte Black and Brushed Gold and offers a modern style that gives your bath a contemporary look and feel of home.



### Wallmount Mirror

Apply makeup or shave with new clarity and style. The double-sided Arris® Wallmount Mirror features swiveling arms on one side and 1X on the other, and extends 13-in. from the wall to bring the convenience to you.



### Moen® Bathroom Lighting

Whether your tastes lean traditional, modern or somewhere in between, Moen® offers a bath lighting choice that will fit your style. Our distinctive lighting options are designed to accent some of our leading faucets. With nine collections to choose from, it's never been easier to tie together the look of your bathroom. Built in the Moen tradition, our lighting offers quality, durability and style. All lighting fixtures can be mounted with globes either facing upward or downward.



In addition to high-end style, our lighting provides installation benefits. The quick connect wiring system allows installers to pre-wire the light fixture to the junction box, meaning there is no need to hold the fixture up to the wall during the wiring process. Glazed sockets help ensure the socket rings install with ease. Additionally, the UL®-listed fixtures are backed by the Moen Warranty and industry-leading customer service.



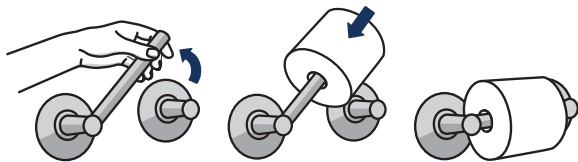


### Decorative Tank Levers

Beautifully designed, our decorative tank levers install in minutes without the need for special tools or draining the tank. Available in a variety of styles and finishes, you can choose the decorative tank lever that best matches your bath décor. All are designed to fit most side, angle, front-mount or gravity-fed tanks.

### Pivoting Paper Holders

Now there's no excuse to leave the bath tissue roll empty! The innovative, spring-free design makes changing the roll quick and easy. Simply lift the arm, insert the new roll and set the arm back into place. The pivoting arm remains attached so there's no spring to lose and no extra parts to drop.





## What's Your Style?

The industry's most distinctive portfolio of accessories is designed with styles and finishes to match Moen® faucets, making it easy to create a perfectly matched bath.



Among traditional collections, **Weymouth®** makes a bold statement. Distinctive accents include porcelain inlays that feature Euro-influenced decorative script and signature styling elements like a refined finial. Such elegant design details and distinctive finishing touches present a sense of uncommon luxury.



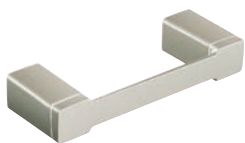
Exposed pipes and industrial chic finishes are just a few of the downtown loft-inspired design details that come to life in **Arris®** accessories. Sharp angles and tubular lines dominate each piece in this modern collection.



Balanced design that blends modern flare and traditional elegance gives **Flara™** its eye-catching appeal, and creates a new vision of glamour.



Tailored traditional, modern glamour, industrial chic... all in one. **Colinet™** has a uniquely versatile design that blends elegant, contemporary elements with beautiful details.



The ultramodern **90°™** accessory collection boldly features precise angles. Its lines, its look and its durable functionality project a simple sophistication for today's baths.



Each piece in the **Via™** collection features a unique, D-shape design with razor thin accents. The streamlined look creates a compact, modern design that makes an impact without overwhelming a bath.



Graceful and unique, **Doux™** makes the perfect addition to any bathroom interior as it redefines modern in the language of great design.



Create a relaxed, yet traditional, style statement in the bath with **Wynford™** faucets and accessories. Multiple finish options give you a variety of decorating options to truly enhance and personalize your space.



From large, open master baths to minimalist powder rooms, **Align®** accessories bring a refreshed modern look to your home with simple lines and contemporary style.



The timeless transitional style of the **Voss™** collection is the perfect marriage of clean lines with a tailored structure. Not too fussy, not too bold, it makes a casual – yet confident – style statement that's designed to work with a variety of decorating styles.





Elegantly simple, the **Glyde™** collection's graceful curves and contours flow beautifully, creating a transitional style that spans a variety of decorating trends.



With style that transcends time, **Brantford™** accessories feature distinguished design details. A range of traditional finish options further enhances the soft lines of this collection.



**Eva®** accessories have a sophistication that is both livable and enduring. With flowing curves, this transitional design offers an elegant appeal that works well in nearly any setting.



The **Genta™** bath suite boasts contemporary, curved edges for an appealing, yet substantial style that brings a sleek feeling to the bathroom.



Williamsburg-Era details and intricate design cues give each **Belfield™** product a timeless look, while multiple finish options add a distinctly personalized touch to the traditional styling.



In scale and in style, the **Dartmoor™** collection is designed to delight with a tailored look that's thoroughly classic.







## What's Your Style?

Moen® coordinating accessories are designed to enhance the beauty of your bath. With innovative products, like our space-enhancing curved shower rod, easy-loading pivoting paper holders, and decorative tank levers, Moen® products also enhance the functionality of the bath.



Rounded posts and solid contours give **Mason**® accessories a personality that's robust yet refined.



The softly curving, edged silhouette of the **Retreat**® collection adds a touch of sophistication and serenity to the bath.



Chic, cylindrical design characterizes **Arlys**™ with an industrial-inspired look and modern finish options. Its accessories complement a modern bathroom aesthetic and provide the perfect finishing touch and functionality.



Strong angles and cylindrical lines make **Triva**™ the perfect contemporary accent to any bathroom interior and transforms the space into a minimalist sanctuary. Geometric forms, squared corners and tubular lines create a focal point for today's contemporary baths. A bold look that makes an impact.

Moen® Coordinating Accessories



The **Iso™** collection's look of telescoping design infuses industrial elements into European minimalism.



Exceptional beauty and uncomplicated style features give the **Sage®** collection an ageless yet fashion-forward presence.



Bold yet simplistic, the **Kyvos™** collection is an exercise in design balance. This lustrous collection works seamlessly with today's lifestyles.



The floating ball design and slender, shapely posts help **Lounge™** accessories lend a carefree spirit to their surroundings.



Rounded posts and solid contours give **Madison™** accessories a personality that's robust yet refined.



The **Preston™** collection's simplicity is its main motif; its low-key appearance acts as a subtle accent that complements the décor.





Gracious and uncomplicated style features give the **Edgestone™** collection an ageless yet fashion-forward presence.



The repeating parallel rings and rounded end posts on **Stockton®** accessories calmly create a sense of order and stability.



The **Danbury®** collection's blend of bold and delicate, offers a discreet complement to a variety of bath décors.



Slender posts and smooth, graceful lines make a delicately beautiful statement throughout the **Yorkshire** collection of accessories.



The **Aspen** collection's soft, subtle shapes take the edge off any setting, allowing form and function to flow as one.





Moen offers bath lighting choices that will fit any design style. Whether you prefer traditional, transitional or modern decor, our distinctive lighting options are designed to accent some of our leading faucets. Choose from one, two, three or four globe lights and nine collections to easily coordinate the look of your bathroom. Regardless of your choice, Moen lighting offers quality, durability and style.



**Waterhill™** Two-Globe Light



**Colinet™** Three-Globe Light



**Flara®** Two-Globe Light



**90™** Two-Globe Light



**Voss™** Two-Globe Light



**Belfield™** Two-Globe Light



**Brantford™** Two-Globe Light



**Eva™** Two-Globe Light



**Iso®** Two-Globe Light



*All lighting fixtures can be mounted with globes either facing upward or downward. Bulbs not included.*

Moen® Lighting



With our distinctive collection of knobs and pulls, you can create a perfectly matched bath or kitchen décor and carry your style throughout the room.



Weymouth®



Flara®



Colinet™



90™



Kingsley®



Iso™



Moen® Accessories in the Kitchen

From towel bars to towel rings, accessories work great in the kitchen.

## Who says Moen Accessories are just for the bathroom?

Consider a towel bar or towel ring beside the kitchen sink or on a kitchen island. Use a robe hook to hang potholders. Install a decorative shelf to house spices. And don't forget matching cabinet knobs and pulls; they help you carry the style throughout your kitchen.





Moen® Shower Rods and Rings



# Curved Shower Rods

Moen® Curved Shower Rods allow you to maximize your space by providing extra elbow room in the shower. They also add an elegant and luxurious look to any bath and are available in six of today's popular finishes: Chrome, Brushed Nickel, Brushed Gold, Polished Nickel, Old World Bronze and Matte Black.

## Double Curved Shower Rod

The Double Curved Shower Rod allows you to transform your room without having to remodel!

- Provides up to 5.5-in. more elbow room in the shower
- Features decorative covers
- Separates the curtain and liner
- Adjusts from 57-in. to 60-in.
- Works with standard 72-in. x 72-in. shower curtains



Adjustable Curved Rod



More Elbow Room



Corrosion-resistant



Separates Curtain and Liner; Doubles as a Drying Rack

*Shower curtain and shower curtain rings are not included with shower rods.*

**PERMANENT**  
MOUNTING HOLDS  
STRONG, LASTS LONG



**PERMANENT**  
MOUNTING HOLDS  
STRONG, LASTS LONG



## Adjustable Curved Shower Rod

- Adjusts to fit shower enclosures between 54-in. and 72-in.
- No cutting required
- Superior strength—weight load capacity of more than 120 lb.\*
- Pivoting flanges provide an easy, secure installation on inconsistent or uneven wall surfaces
- Provides up to 5.5-in. of additional elbow room in the shower
- Decorative covers snap on easily to conceal pivoting flanges and hide holes from previous shower rods
- Stainless steel construction
- Works with standard 72-in. x 72-in. shower curtains



Adjustable  
Curved Rod



More Elbow  
Room



Corrosion  
-resistant

### Flanges Pivot 180 Degrees



**Choice of decorative covers - choose from round or square. Each available in your choice of Chrome, Brushed Nickel, Brushed Gold, Polished Nickel, Old World Bronze and Matte Black.**



**Double Shower Curtain Rings  
Complete Your Shower**

*Shower curtains and rods are not included with shower curtain rings.  
Shower curtain and shower curtain rings are not included with shower rods.  
\*Based on independent lab testing.*

**PERMANENT**  
MOUNTING HOLDS  
STRONG, LASTS LONG

## Fixed-Length Curved Shower Rod

- Available in 5-ft. and 6-ft. lengths
- Pivoting flanges provide an easy, secure installation on inconsistent or uneven wall surfaces
- Provides extra elbow room in the shower:
  - 5-ft. rod = up to 6-in. extra space
  - 6-ft. rod = up to 7.5-in. extra space
- Decorative covers snap on easily to conceal pivoting flanges and hide holes from previous shower rods
- Stainless steel construction
- Works with standard 72-in. x 72-in. shower curtains
- Available in Chrome, Brushed Nickel, Old World Bronze and Matte Black. (finishes available vary by product)



Fixed-Length  
Curved Rod



More Elbow  
Room



Corrosion  
-resistant

### Flanges Pivot 180 Degrees



*Shower curtain and shower curtain rings are not included with shower rods.*



**TENSION**  
MOUNTING INSTALLS  
AND REMOVES EASILY



**TENSION**  
MOUNTING INSTALLS  
AND REMOVES EASILY

## Tension Curved Shower Rod

In minutes you can add up to an additional 5.5-in. of elbow room to your shower and transform your bath.

- Easy installation: expand the bar to the correct size, apply tension and snap on the decorative covers
- Adjusts to fit spaces between 57-in. and 60-in.
- Works with standard 72-in. x 72-in. shower curtains
- Available in your choice of Brushed Nickel or Chrome



More Elbow Room



Corrosion-resistant



No Tools Required



Adjustable Curved Rod

*Shower curtain and shower curtain rings are not included with shower rods.*

## Tension Straight Shower Rod

No tools, no additional hardware, no long installation. In fact, our tension rods with FastLock™ technology can be up in a matter of minutes.

- Rod expands from 44-in. to 72-in.
- Stainless steel construction
- Quick, easy installation
- FastLock™ technology eliminates “wall walking”
- Works with standard 72-in. x 72-in. shower curtains
- Available in your choice of Brushed Nickel, Chrome or Old World Bronze



No Tools Required



Corrosion-resistant



Adjustable Straight Rod

with  
**FASTLOCK™**  
technology



## Make Every Bath a Safe Bath.

Safety is for everyone and every bath. And it can be beautiful too. Moen offers durable, ADA-compliant designs—from grab bars to furniture—that combine innovative function with a look that easily coordinates with the style of your bath.



Flara® Faucet-Matching  
Designer Grab Bar



Arris® Faucet-Matching  
Designer Grab Bar



90™ Faucet-Matching  
Designer Grab Bar



Align® Faucet-Matching  
Designer Grab Bar



Voss™ Faucet-Matching  
Designer Grab Bar



Belfield™ Faucet-Matching  
Designer Grab Bar



Kingsley™ Faucet-Matching  
Designer Grab Bar



Brantford® Faucet-Matching  
Designer Grab Bar



Eva® Faucet-Matching  
Designer Grab Bar



Genta™ Faucet-Matching  
Designer Grab Bar

## Designer Grab Bars



Designer Elegance  
Grab Bar with Grip Pads



Designer Elite  
Grab Bar



Designer Ultima  
Grab Bar



Designer Ultima  
Grab Bar with Curl Grips



Designer Elegance  
Angled Grab Bar



Iso™ Designer  
Grab Bar



## Grab Bars with Accessories



24" Grab Bar  
with Towel Bar



8" Grab Bar  
with Paper Holder



9" Grab Bar  
with Corner Shelf



16" Grab Bar  
with Shelf

## Hand Grips



Designer Hand Grip



Exposed Screw Hand Grip

## Tub/Shower Chairs, Seats and Transfer Benches



Old World Bronze  
Fold-Down Teak  
Shower Seat



Adjustable Tool-  
Free Tub and  
Shower Chair



Transfer Bench



Tool-Free  
Shower Chair



Adjustable Tub and  
Shower Chair



Mesh Shower Chair



Adjustable Shower  
Seat



Adjustable Tub and  
Shower Seat



## Experienced, Professional Best-In-Class Customer Service

We'll be there when you need us. Our highly trained Moen customer and consumer service experts are dedicated to providing attentive service and outstanding customer care before and after your purchase – online, in person or on the phone at **1-800-BUY-MOEN**.



### Limited Lifetime Warranty

Moen® products feature a Limited Lifetime Warranty. Visit **moen.com** for complete warranty information.

---

U.S. Headquarters:  
Moen Incorporated  
25300 Al Moen Drive, North Olmsted, OH  
44070-8022

1-800-BUY-MOEN

Canada Headquarters:  
Moen  
2816 Bristol Circle, Oakville, Ontario  
L6H 5S7

1-800-465-6130

Although descriptions are believed correct at publication approval, accuracy cannot be guaranteed. Moen reserves the right to make product specification changes from time to time, without notice or obligation, and to change or discontinue models.

Connect with us:  
[moen.com/social](https://moen.com/social)

Visit our website at [moen.com](https://moen.com)