

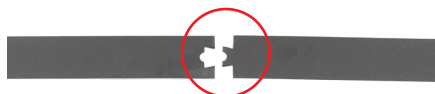
Barn Door Hardware

1000 Series

Pamex 1000 Series Classic Style Barn Door Hardware fits perfectly with industrial style home. The best way to separate rooms without taking out too much space.

Specifications & Features

- Style: Classic w/ Flat Track Rail
- Wheel Type: Bent Strap or Top Mount
- Doors: Wood Door
- Track Length: 6'6" or 8'0"
- Door Thickness: 1-3/8" ~ 1-3/4"
- Maximum Door Weight: 165lbs
- Material: Metal Construction
- Finish: Matte Black or Satin Nickel
- Easy to transport Two-Piece Track Design
- Soft Closing System Available



Two-Piece Track



Soft Closing Kit



Door Stopper



Anti-Jump



Track Mounting Bracket



Track Mounting Screws



Hand Pull



Floor Guide



Adjustable Floor Guide



1000 Series -Top Mount



1000 Series -Bent Strap



Bent Strap

Top Mount



Barn Door Hardware

2000 Series

Pamex 2000 Series Contemporary Style Barn Door Hardware fits perfectly with modern style home. The best way to separate rooms without taking out too much space.

Specifications & Features

- Style: Contemporary w/ Round Track Rail
- Wheel Type: Strap Wheel or Top Mount
- Doors: Wood Door or Glass Door
- Track Length: 6'6" or 8'0"
- Door Thickness: 1-3/8" ~ 1-3/4"
- Maximum Door Weight: 165lbs
- Material: Stainless Steel
- Finish: Stainless Steel
- Easy to transport Two-Piece Track Design
- Available with Soft Closing System



2000 Series –Top Mount

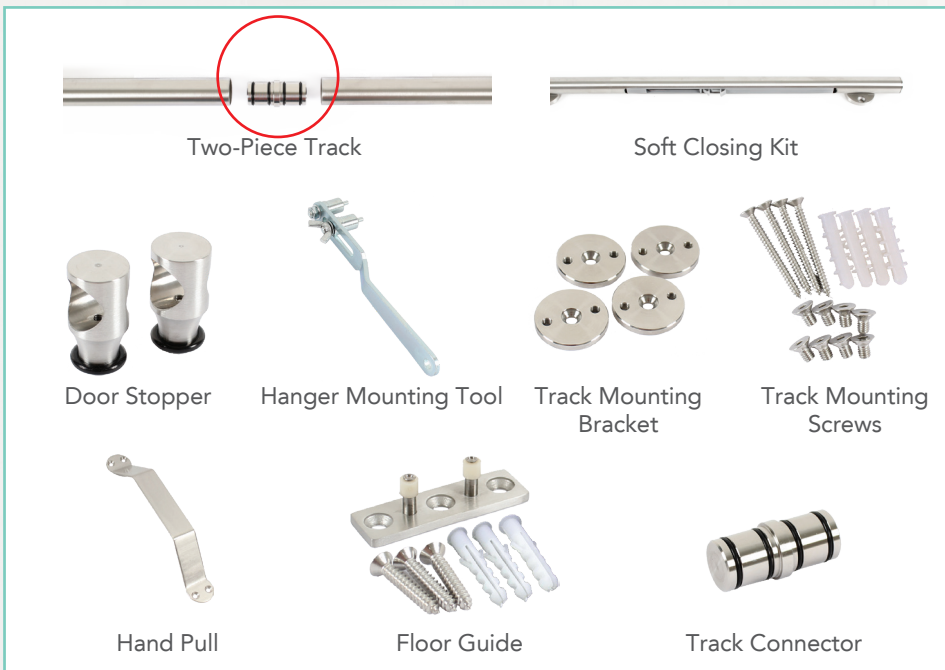


2000 Series –Straight Strap



Straight Wheel

Top Mount



Two-Piece Track

Soft Closing Kit



Door Stopper



Hanger Mounting Tool



Track Mounting Bracket



Track Mounting Screws



Hand Pull



Floor Guide



Track Connector

