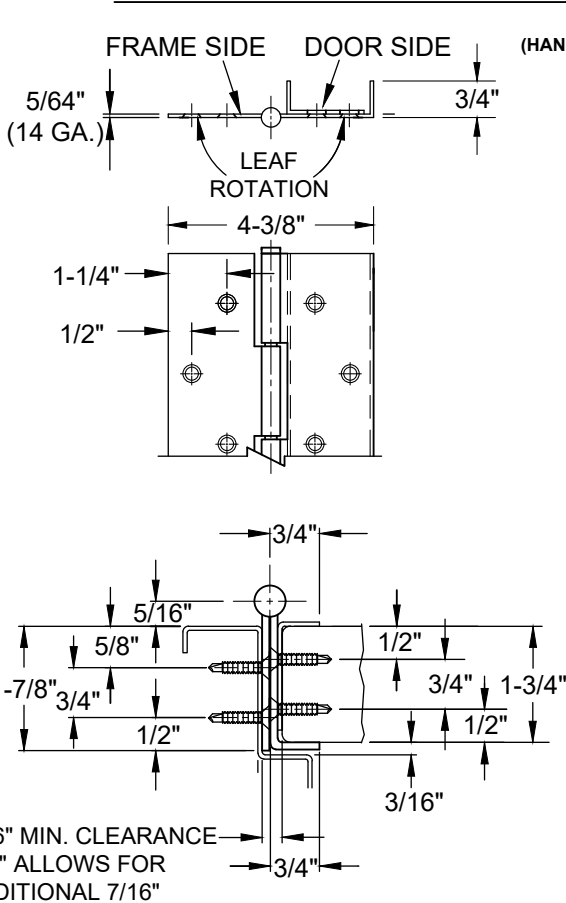
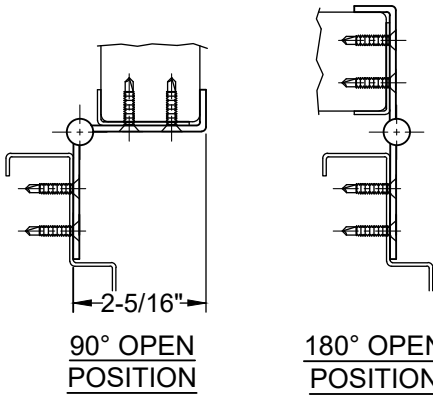


A505 - STAINLESS STEEL HINGE, WITH DUAL EDGE GUARD



CLOSED POSITION



78-3/4" (HANDING REQUIRED)	83-1/8"	85" (HANDING REQUIRED)	95"	118-3/4"
0	0	0	0	0
1-1/16"	1"	1"	7/8"	7/8"
2-9/16"	2-1/2"	2-1/2"	2-3/8"	2-3/8"
4-1/16"	4"	4"	3-7/8"	3-7/8"
5-9/16"	5-1/2"	5-1/2"	5-3/8"	5-3/8"
8-9/16"	8-1/2"	8-1/2"	8-3/8"	8-3/8"
11-9/16"	11-1/2"	11-1/2"	11-3/8"	11-3/8"
17-9/16"	17-1/2"	17-1/2"	17-3/8"	17-3/8"
23-9/16"	23-1/2"	23-1/2"	23-3/8"	23-3/8"
29-9/16"	29-1/2"	29-1/2"	29-3/8"	29-3/8"
35-9/16"	35-1/2"	35-1/2"	35-3/8"	35-3/8"
41-9/16"	41-1/2"	41-1/2"	41-3/8"	41-3/8"
47-9/16"	47-1/2"	47-1/2"	47-3/8"	47-3/8"
53-9/16"	53-1/2"	53-1/2"	53-3/8"	53-3/8"
59-9/16"	59-1/2"	59-1/2"	59-3/8"	59-3/8"
65-9/16"	65-1/2"	65-1/2"	65-3/8"	65-3/8"
71-9/16"	71-1/2"	71-1/2"	71-3/8"	71-3/8"
74-9/16"	77-1/2"	77-1/2"	77-3/8"	77-3/8"
77-9/16"	83-3/8"	83-3/8"	83-3/8"	83-3/8"
79-1/16"	89-3/8"	89-3/8"	89-3/8"	89-3/8"
80-9/16"	95-3/8"	95-3/8"	95-3/8"	95-3/8"
82-1/16"	101-3/8"	101-3/8"	101-3/8"	101-3/8"
83-1/8"	107-3/8"	107-3/8"	107-3/8"	107-3/8"
	110-3/8"	110-3/8"	110-3/8"	110-3/8"
	113-3/8"	113-3/8"	113-3/8"	113-3/8"
	114-7/8"	114-7/8"	114-7/8"	114-7/8"
	116-3/8"	116-3/8"	116-3/8"	116-3/8"
	117-7/8"	117-7/8"	117-7/8"	117-7/8"
	118-3/4"	118-3/4"	118-3/4"	118-3/4"

NOTE : HINGES CUT TO CUSTOM LENGTH ARE CUT FROM BOTTOM - PLEASE SPECIFY HANDING

STANDARD HINGE SIZES & SCREW DETAIL

NOMINAL DOOR HEIGHT	6'8"	7'0"	7'2"	8'0"	10'0"
ACTUAL HINGE HEIGHT	78-3/4"	83-1/8"	85"	95"	118-3/4"
10-24 x 7/8" PHILLIPS FLAT HEAD, UNDERCUT, SELF-DRILLING, TEK MACHINE SCREW	42	42	42	46	54
#10 x 1-1/4" PHILLIPS FLAT HEAD, UNDERCUT, SHEET METAL SCREW	42	42	42	46	54
"AS" ADJUSTABLE STUDS & 10-32 x 3/4" PHILLIPS FLAT HEAD, UNDERCUT, MACHINE SCREW	21	21	21	23	27

NOTE: THIS DRAWING IS NOT TO SCALE.

A505-STAINLESS STEEL HINGE-02.DWG



www.abhmfg.com
 E-mail: abhinfo@abhmfg.com
 Architectural Builders Hardware Mfg., Inc.
 1222 Ardmore Ave., Itasca, IL 60143
 630.875.9900; FAX 800.9FAXABH (932.9224)

A505
STAINLESS STEEL HINGE

© 2022 ABH Mfg., Inc.
 printed in USA

PAGE 1 OF 1
 REVISED 02-04-22