

1870 Cylinder-Operated Flushbolt



ASSA ABLOY

Installation Instructions

Experience a safer
and more open world

PACKAGE CONTENTS

- A** Faceplate
- B** Lock Body
- C** #10-32 x 1-7/8" Machine Screws (2)
- D** #8-32 x 1/4" Machine Screws (3)
- E** #10-32 x 5/16" Machine Screws (4)
- F** Bolt Guide
- G** Tube Spacers (2)
- H** Rod-Bolt Assembly

RECOMMENDED TOOLS & ACCESSORIES

- Phillips and Flathead Screwdrivers
- Mortise Cylinder and/or Thumbturn with MS Cam
- Drill

INSTALLATION AND ASSEMBLY

1 SCREW Rod-Bolt Assembly into Actuator Arm.

NOTE: When lock is UNLOCKED, measurement from CL of Cylinder hole to tip of bolt should be approximately 12" (305mm), see DIMENSIONS drawing.

2 INSTALL assembled unit through stile cutout.

3 SECURE assembled unit to the back of stile with included #10-32 x 1-7/8" screws.

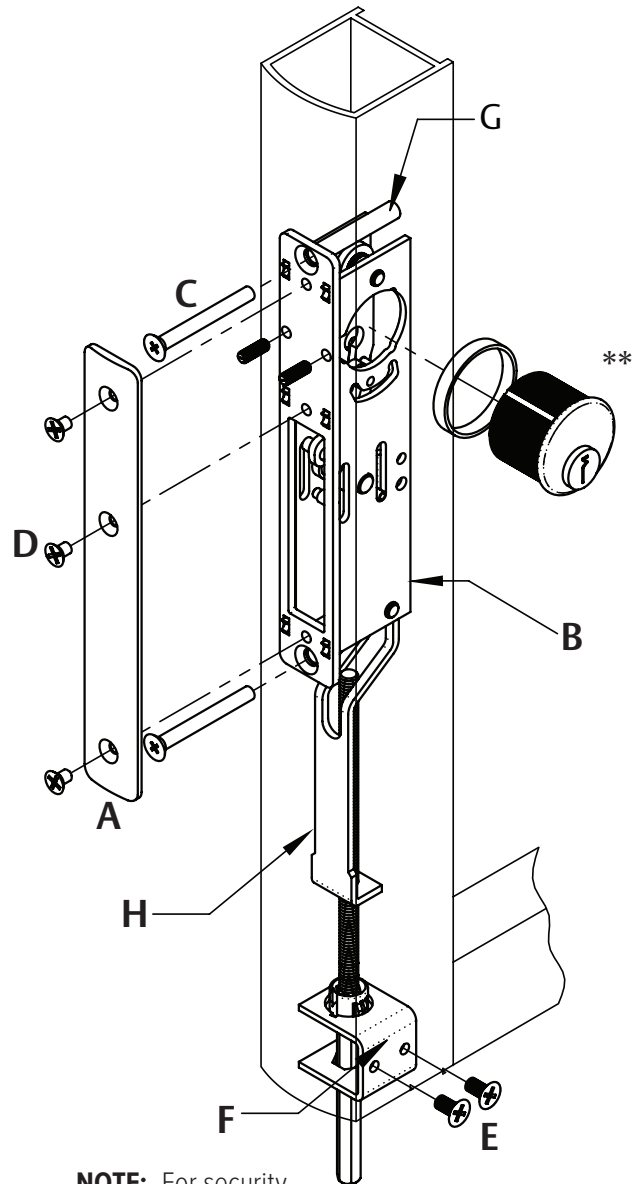
NOTE: Stile should be drilled and tapped for #10-32 screws.

4 ADJUST the rod-bolt assembly until it is even with the bottom rail of the door.

5 INSTALL bolt guide using provided #10-32 x 5/16" screws

NOTE: For any future adjustments, the Bolt Guide must be removed before the rod-bolt assembly can be rotated.

6 INSTALL Faceplate to Lock Body with included #8-32 screws.

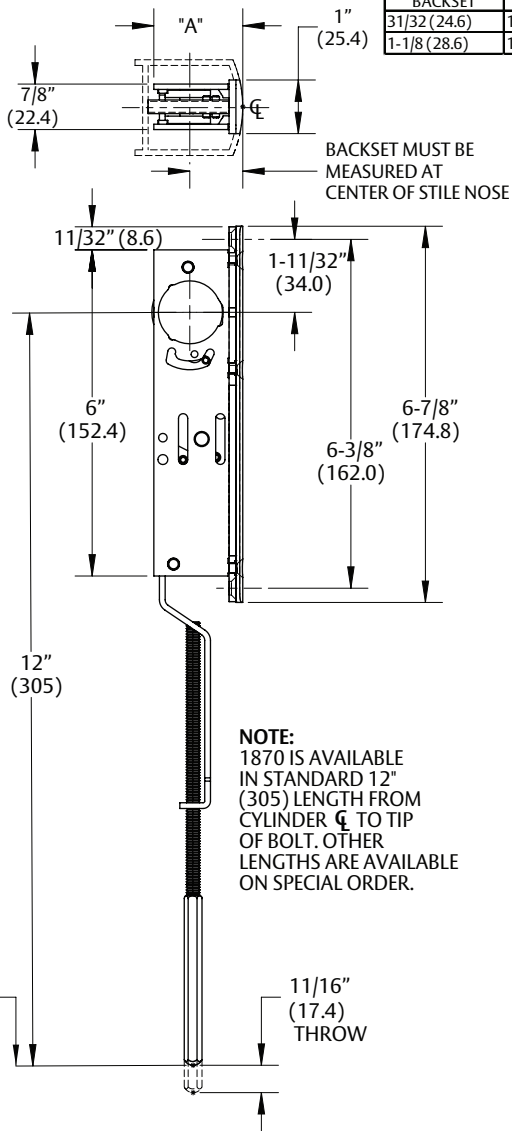


NOTE: For security,
install bolt guide from
inside of door.

**** Cylinder not included**

DOOR PREPARATION

DIMENSIONS

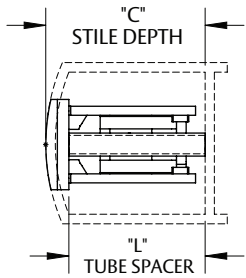
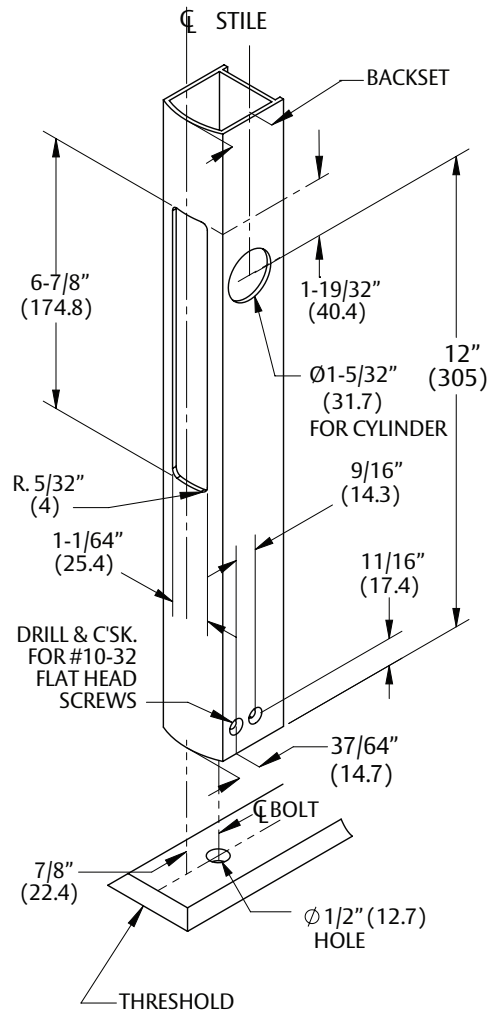


| AVAILABLE BACKSET | "A" |
|-------------------|----------------|
| 31/32 (24.6) | 1-19/32 (40.6) |
| 1-1/8 (28.6) | 1-3/4 (44.5) |

BACKSET MUST BE MEASURED AT CENTER OF STILE NOSE

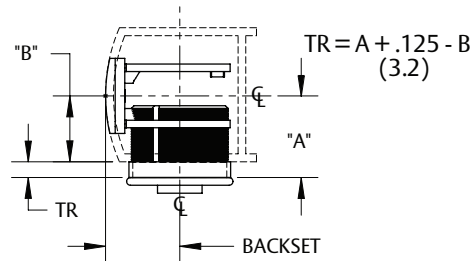
NOTE:
1870 IS AVAILABLE IN STANDARD 12" (305) LENGTH FROM CYLINDER ϕ TO TIP OF BOLT. OTHER LENGTHS ARE AVAILABLE ON SPECIAL ORDER.

STILE PREPARATION

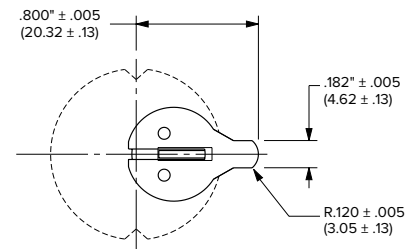


$$L = C - .25 (6.4)$$

SCREWS FURNISHED WILL BE APPROX. .25" (6.4) LONGER THAN SPACER.



$$TR = A + .125 - B (3.2)$$



MOUNTING METHOD: Lock is secured to back web of Stile by means of two (2) #10 Flat Head Machine Screws and Tube Spacers of proper length to position lock.

CYLINDER TRIM RING: Trim Ring thickness (TR) will vary with specific cylinder make, number of pins and Stile thickness. To determine Trim Ring thickness, use the formula illustrated above.

NOTE: Cylinder not included. The MS® Series locks are operable by any standard 1-5/32" diameter mortise cylinder with special MS Cam dimensions as shown. Cylinders with MS Cams can be readily obtained from most cylinder manufacturers.



ASSA ABLOY

adamsrite.com | 800 626 7590
techsupport.adamsrite@assaabloy.com

Printed in the U.S.A.
Patent pending and/or patent www.assaabloydss.com/patents
Copyright © 2025, Hanchett Entry Systems, Inc., an ASSA ABLOY Group company. All rights reserved. Reproduction in whole or in part without the express written permission of Hanchett Entry Systems, Inc. is prohibited. 80-0180-8_5