

# 1877 Flushlock



ASSA ABLOY

## Installation Instructions

Experience a safer  
and more open world

## PACKAGE CONTENTS

- A** Lock Assembly
- B** Trim Plate
- C** Strike
- D** Bolt Guide with Bushing
- E** #10 x 3" Flat Head Wood Screw (2)
- F** #8-32 x 1/4" Flat Head Machine Screws (2)
- G** #6 x 3/4" Flat Head Wood Screws (2)
- H** #8-32 x 7/16" Flat Head Machine Screws (2)
- I** #8 x 1" Flat Head Wood Screws (3)

## RECOMMENDED TOOLS & ACCESSORIES

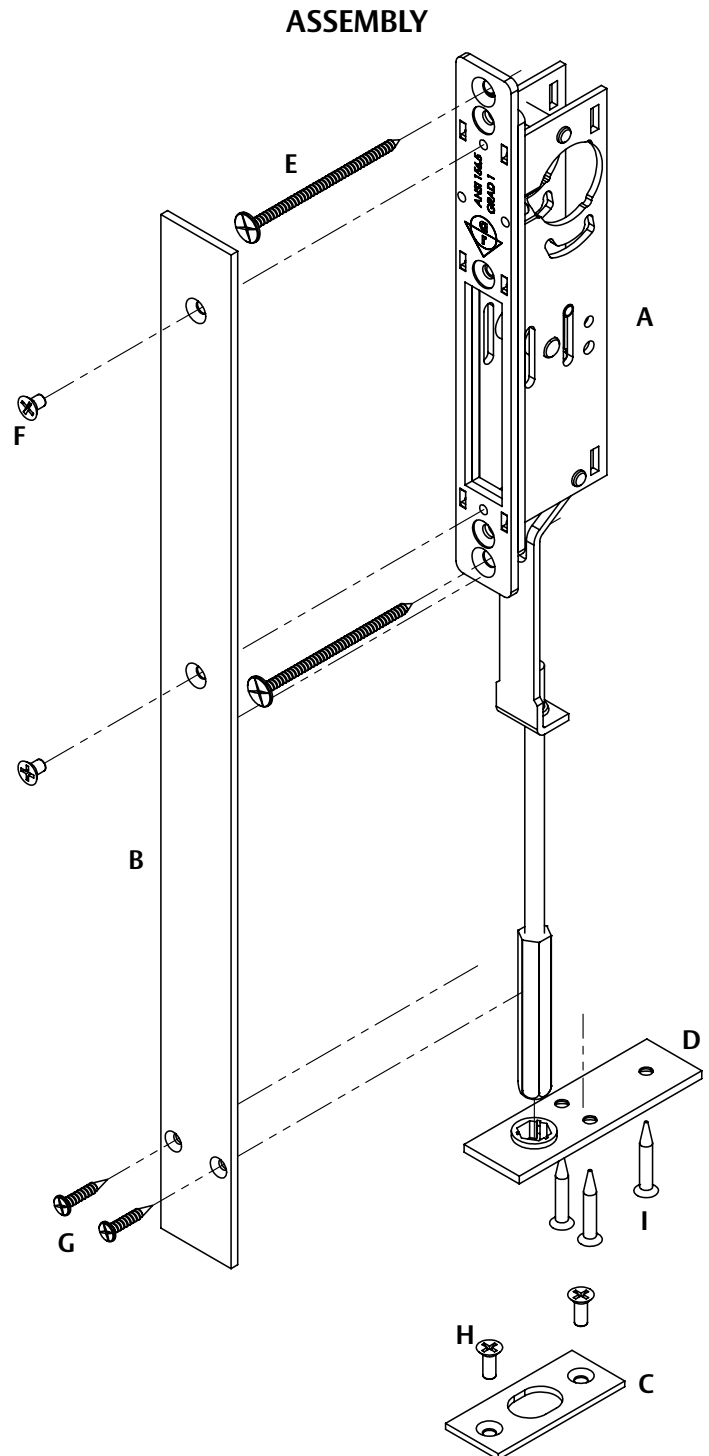
- Drill with bits appropriate for making pilot holes in wood
- Screwdrivers (Phillips and Flathead)
- Mallet and Wood Chisel for cleaning up door prep
- Mortise Cylinder and/or Thumbturn
- Router with Bits

## INSTALLATION AND ASSEMBLY

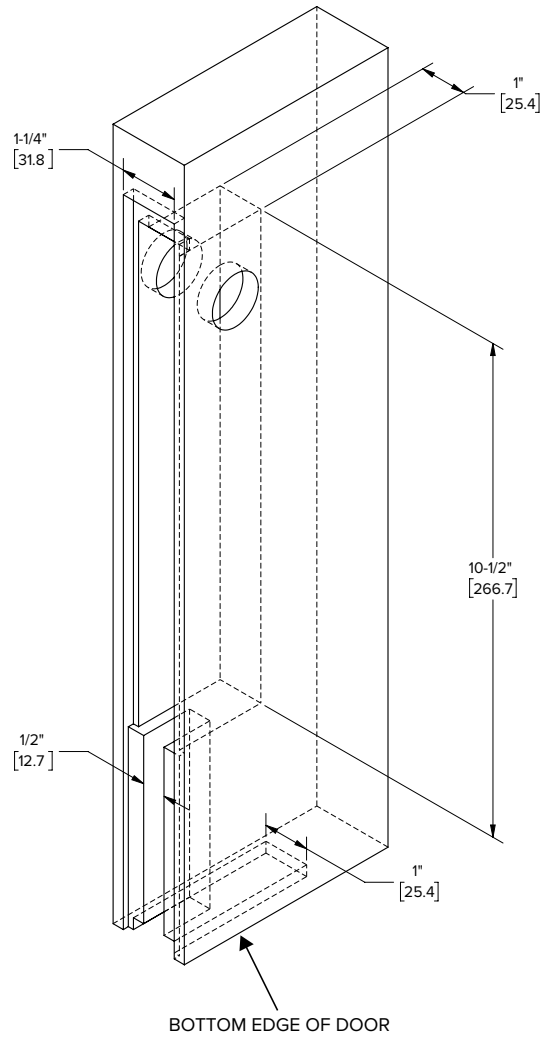
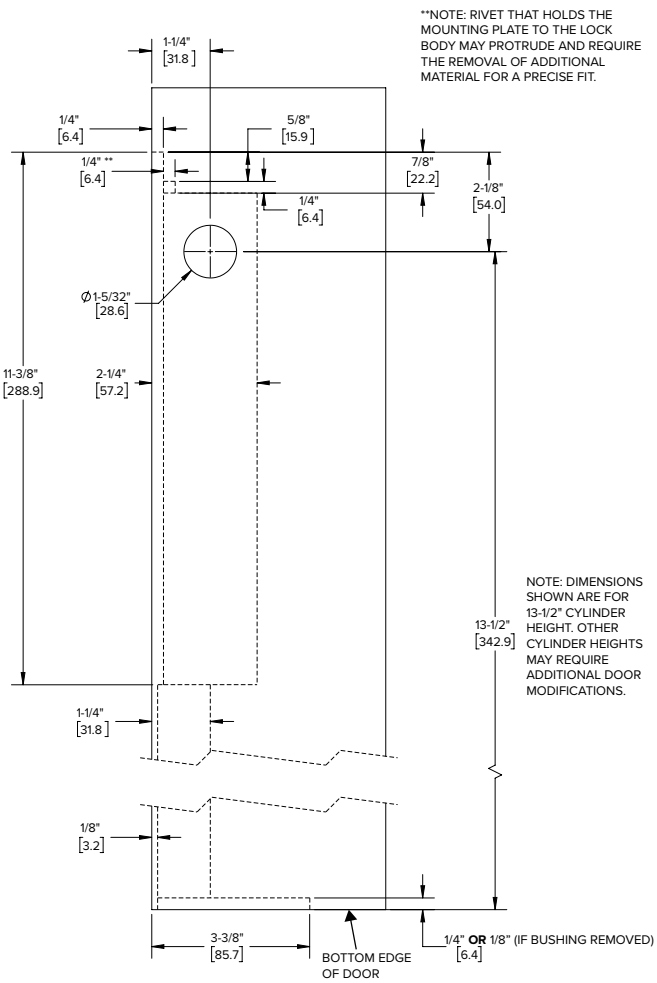
- 1** PREPARE door for the Lock assembly and Bolt Guide as shown.

**NOTE:** Dimensions shown are for a 13-1/2" cylinder height. Other cylinder heights may require additional door prep and modifications.

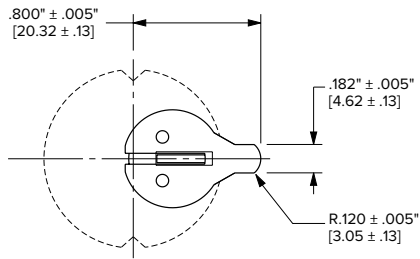
- 2** ASSEMBLE 1877 Flushlock as shown.
- 3** INSTALL Mortise Cylinder (not included)
  - Thread into Lock Body and secure with flat head set screw behind Trim Plate.
- 4** INSTALL Strike into threshold using 8-32 Machine Screws.



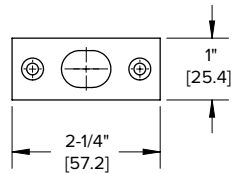
# DOOR PREPARATION



**NOTE:** Cylinder not included  
The MS® Series locks are operable by any standard 1-5/32" diameter mortise cylinder or thumbturn with special MS Cam dimensioned as shown. Cylinders with MS Cams can be readily obtained from most cylinder manufacturers.



## STRIKE DIMENSIONS



## THRESHOLD PREPARATION

