

## DEPENDABLE AND ECONOMICAL



### **ED2000 Series Exit Device**

The Corbin Russwin ED2000 Series exit device delivers dependable performance and easy installation for economy commercial applications. Priced for exceptional value, it features an ADA-compliant touch bar for quick, safe exits and is available in rim and surface vertical rod configurations. ANSI/BHMA Grade 1 certified with durable construction and versatile mounting options, the ED2000 is ideal for a wide range of facilities and offers a full selection of decorative trims, including the Museo® Collection.



ASSA ABLOY

# ED2000 Series

Exit Device



## BENEFITS

**STRENGTH & RELIABILITY:** Verified cycle and strength testing proves the ED2000 Series meets ANSI/BHMA Grade 1 standards

**SMOOTH & SECURE:** Made with heavy-duty steel to create a low profile and dependable exit device with resistance against vandalism

**AESTHETICS:** Attractive, minimalist design featuring many levers and architectural finishes to blend with any décor

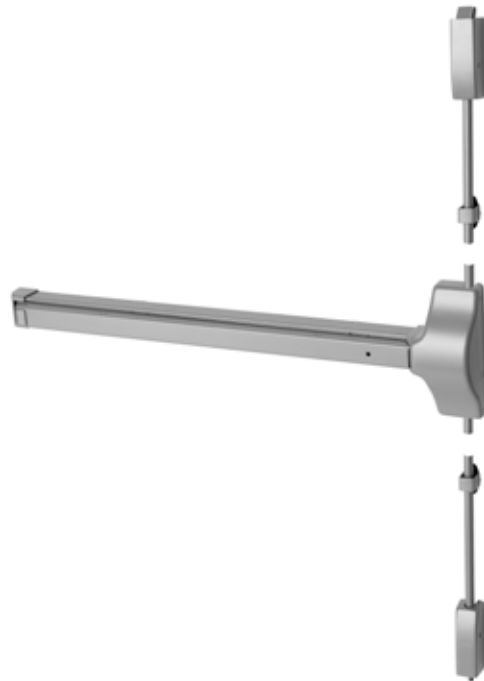
**EASE OF INSTALL AND MAINTENANCE:** Modular components and robust design allow for quick and easy installation, and maintenance free operation

## FEATURES

- ANSI/BHMA Grade 1 certified
- ADA Compliant
- Heavy-duty steel construction
- Low profile and projection for barrier-free code compliance
- No projecting parts to inhibit egress
- Accommodates various trim functions for flexibility
- Wide range of trim styles and finishes to match other Corbin Russwin products
- Devices available to satisfy C-UL US safety and fire requirements

## COMMON APPLICATIONS

- Retail
- Restaurants
- Office Buildings
- Gymnasiums



Corbin Russwin Architectural Hardware  
225 Episcopal Road | Berlin, CT 06037  
Phone 800-543-3658 | Fax 800-447-6714  
corbinrusswin.com

The ASSA ABLOY Group is the global leader in access solutions. Every day we help people feel safe, secure and experience a more open world.

Copyright © 2023, 2025, ASSA ABLOY Access and Egress Hardware Group, Inc. All rights reserved. Reproduction in whole or in part without the express written permission of ASSA ABLOY Access and Egress Hardware Group, Inc. is prohibited. Patent pending and/or patent [www.assaabloydss.com/patents](http://www.assaabloydss.com/patents).

46002 - 09/25