

CONTRACTOR:

PROJECT:

DATE:

PREPARED BY:

SERIES: PSB487

## PSB487

### SPECIFICATION & FEATURES

#### DESCRIPTION

4 GANG 87 CU IN PLASTIC SB NAIL ON

#### CATEGORY:

NEW WORK

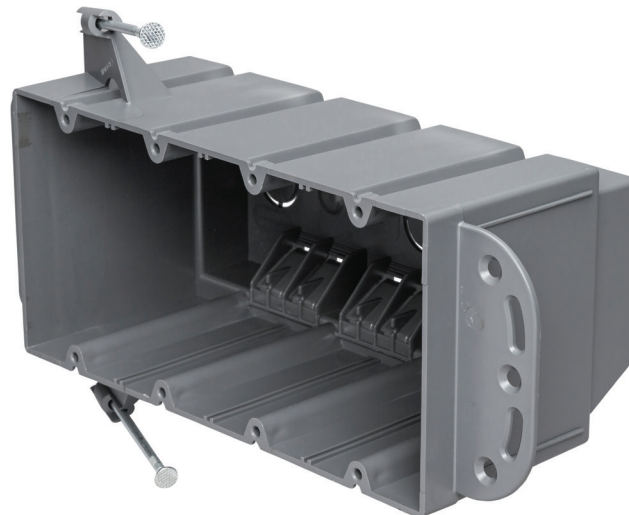
#### FEATURES:

Knockouts for easy cable entry

Galvanized nails defend against rust

Pre-installed nails for quick installation

ETL listed &amp; 2-hour fire rated



#### RATINGS

Country of Origin: CN



### ORDERING INFORMATION

**PART #**  
 PSB487

**STOCK CODE**  
 0641-9061

**CARTON QTY**  
 30

**MOUNT**  
 NAIL ON

**INSULATION**  
 NON-INSULATED

**COLOR**  
 GRAY

**WEIGHT**  
 0.467 POUNDS

**NUMBER OF OUTLET**  
 4

**MATERIAL**  
 PLASTIC

**HEIGHT**  
 3.625"

**WIDTH**  
 9.75"

**DEPTH**  
 4"

**CABLE ENTRY**  
 (14) CLAMPS, (3) 1/2" KO

**CUBIC CAPACITY**  
 87 IN<sup>3</sup>

APPLICATION AND PERFORMANCE SPECIFICATION INFORMATION IS SUBJECT TO CHANGE WITHOUT NOTIFICATION

11675 SW TOM MACKIE BLVD. | PORT ST. LUCIE, FL 34987 | P: 772.878.4944 | WWW.CENTAURINSTALLATION.COM