



CENTAUR
ELECTRICAL INSTALLATION

CONTRACTOR:

PROJECT:

DATE:

PREPARED BY:

SERIES: PSB355-OW

PSB355-OW

SPECIFICATION & FEATURES

DESCRIPTION

3 GANG 35 CU IN PLASTIC SB OLD WORK

CATEGORY:

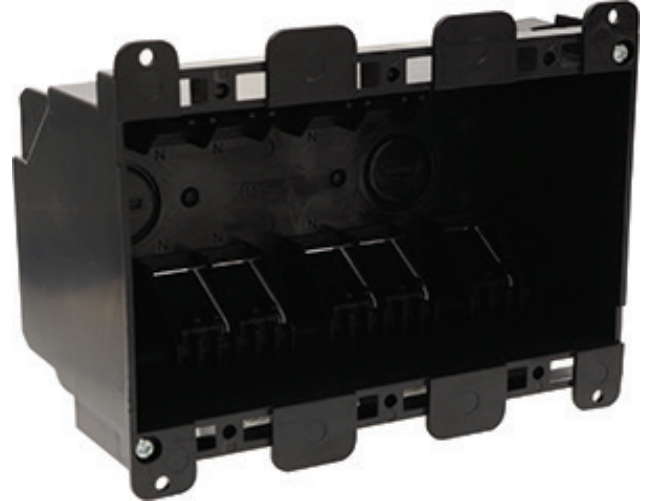
OLD WORK

FEATURES:

Swing clip for fast installation in existing drywall

Wire clamp for secure installation

ETL listed & 2-hour fire rated



RATINGS

Country of Origin: CN



ORDERING INFORMATION

PART #
PSB355-OW

STOCK CODE
0583-1712

CARTON QTY
6

MOUNT
SWING CLAMP DIRECT
TO SHEET ROCK

INSULATION
NON-INSULATED

COLOR
BLACK

WEIGHT
0.44 POUNDS

NUMBER OF OUTLET
3

MATERIAL
PLASTIC

HEIGHT
3.75"

WIDTH
5.75"

DEPTH
2.75"

LENGTH
5.72 INCHES

CABLE ENTRY
(10) CLAMPS, (2) 1/2" KO

CUBIC CAPACITY
55 IN³

CONSTRUCTION
MOLDED

APPLICATION AND PERFORMANCE SPECIFICATION INFORMATION IS SUBJECT TO CHANGE WITHOUT NOTIFICATION

11675 SW TOM MACKIE BLVD. | PORT ST. LUCIE, FL 34987 | P: 772.878.4944 | WWW.CENTAURINSTALLATION.COM