



**CENTAUR**  
ELECTRICAL INSTALLATION

CONTRACTOR:

PROJECT:

DATE:

PREPARED BY:

SERIES: P4SDB-NM-N

## P4SDB-NM-N

### SPECIFICATION & FEATURES

#### DESCRIPTION

PLASTIC 32 CU. IN. 4S BOX - NM - NAIL ON

#### CATEGORY:

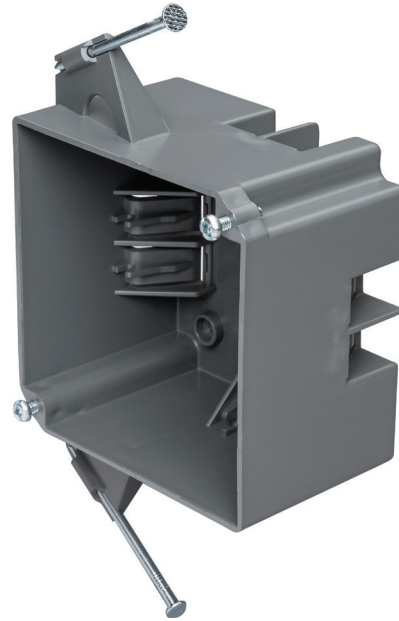
OUTLET BOX

#### FEATURES:

1/2" knockout for easy cable entry  
Pre-installed nails for quick installation  
Wire clamp for secure installation  
ETL listed & 2-hour fire rated

#### RATINGS

Country of Origin: CN



### ORDERING INFORMATION

**PART #**  
P4SDB-NM-N

**STOCK CODE**  
0606-9306

**CARTON QTY**  
50

**MOUNT**  
DIRECT

**INSULATION**  
NON-INSULATED

**COLOR**  
GRAY

**WEIGHT**  
0.32 POUNDS

**NUMBER OF OUTLET**  
1

**MATERIAL**  
PVC

**HEIGHT**  
4"

**WIDTH**  
4"

**DEPTH**  
2.625"

**LENGTH**  
4 INCHES

**CABLE ENTRY**  
(8) CLAMPS, (1) 1/2" KO

**CUBIC CAPACITY**  
32 IN<sup>3</sup>

APPLICATION AND PERFORMANCE SPECIFICATION INFORMATION IS SUBJECT TO CHANGE WITHOUT NOTIFICATION

11675 SW TOM MACKIE BLVD. | PORT ST. LUCIE, FL 34987 | P: 772.878.4944 | WWW.CENTAURINSTALLATION.COM