

SAVOY | breeganjane







INTRODUCING

Breegan Jane

I'm Breegan Jane, an interior designer, author, philanthropist, TV host and mom.

At the start of my career, I didn't really envision becoming an interior designer, but I always had that desire to capture the sensation of "home". Now, I bring that feeling into the spaces I design with finesse and familiarity.

For me, design comes from the urge to realize the artistry that lives in my mind. My mix of purpose and imagination creates solutions to enhance the beauty and the functionality of a home. I approach each project with the goal to infuse it with modern, approachable luxury, something that absolutely goes hand in hand with what I often refer to as the jewels of a space: lighting.

Using the right lighting in a design project is crucial to creating mood and inspiration. It's the conductor of the visual symphony, directing the heights and depths, moving the energy around the space. I'm so excited about my collaboration with Savoy House because we have created a magnificent array of lighting fixtures that will bring panache and refinement while evoking the perfect visual, emotional and sensory impressions for any moment or occasion.

Venice

“Bringing the drama without overtaking the room.”

Lighting is the jewelry of the home and Venice is like a beautiful bangle bracelet, crafted from hammered metal and adorned with petals of faceted crystal. The Metropolis Black finish on the outside and Gold finish on the inside are both hand-painted by artisans.



1-2493-6-104
6-Light Chandelier
30"W x 6-1/2"H







“Lighting is key to the design of a space as it determines how the space can be used and the ambiance and vibe.”

Estrella Del Mar



Sputnik style gets a fresh, organic twist inspired by the large, curling leaves of a rubber tree. The Burnished Gold interior and Centura exterior finish are hand painted, making Estrella Del Mar the perfect statement piece for any space.

1-5148-14-24
14-Light Chandelier
36"W x 26"H



Infused with luxurious Old Hollywood glamour, Boa's frosted glass feathers have a luxurious transparency and cascade down in overlapping rows, creating a look that is sure to turn heads. The Warm Brass finish is a perfect example of how Breegan uses metallics to elevate her designs.



Boa

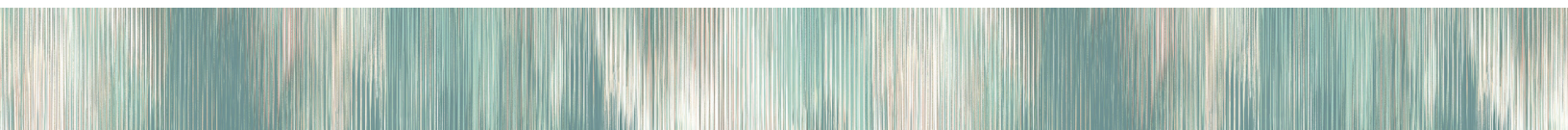
“The perfect mix of approachable modern luxury.”



1-3505-15-322
15-Light Chandelier
34"W x 30"H

1-3504-9-322
9-Light Chandelier
27"W x 25"H

9-3506-3-322
3-Light Sconce
10-1/2"W x 14"H x 6"E





Muse

The grand, beautiful look of Muse features curving arms, olive branch detailing and White Cashmere-finished candle cups shaped like flowers. The French Gold finish simply amplifies its glamour and luxury.

“I’ve yet to see or meet anyone who doesn’t appreciate a little luxury infused in their home design.”



1-5186-12-59
12-Light Chandelier
52-1/2"W x 32"H





Turaco

Turaco's subtle yet stunning structure flaunts rows of petals that showcase unique hand-painted finishes in Midnight and Calypso Gold, creating classic two-tone allure. This eye-catching look brings the drama without overwhelming the room.



“Sometimes it only takes simple changes to completely reimagine a room.”



7-9012-6-58
6-Light Chandelier
30"W x 13"H



Del Mar



Del Mar's sleek and slim structures bring a big dose of bold contemporary beauty. LED light shines through clear seeded acrylic batons, adding eye-catching texture that is complemented by the Warm Brass finish.

1-2507-8-322

8-Light Chandelier
48"W x 11-1/4"H

9-2509-1-322

1-Light Sconce
5-1/4"W x 13-1/4"H x 4-3/4"E

1-2508-4-322

4-Light Chandelier
30"W x 11-1/4"H

1-8951-8-322

8-Light Linear Chandelier
48"L x 7-1/2"W x 11"H





“The best rooms have something to say
about the people who live in them.”

Isla Blanca



1-3170-6-322

6-Light Chandelier
32"W x 22"H

1-3173-8-322

8-Light Chandelier
40"W x 26"H

7-3171-1-322

1-Light Pendant
8"W x 13-3/4"H

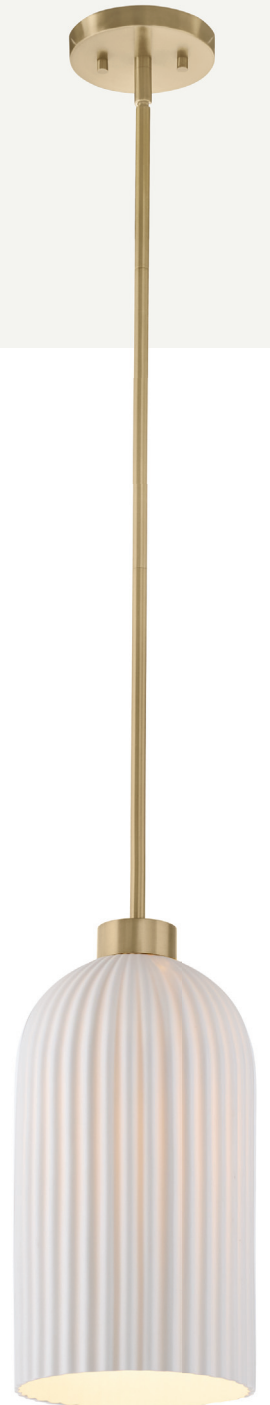
9-3172-1-322

1-Light Sconce
5"W x 9"H x 6-1/2"E

Bregan believes that luxe design is in the details, like the beautifully textured translucent porcelain shades that take the spotlight here. When the lights are on, the shades of Isla Blanca create a flattering glow. When the lights are off, they add an eye-catching touch to any room while the Warm Brass finish amplifies the glamour.



“Metallics instantly elevate design without trying too hard.”



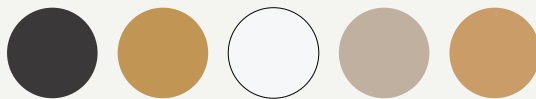


“You don't need a special occasion to make life beautiful.”

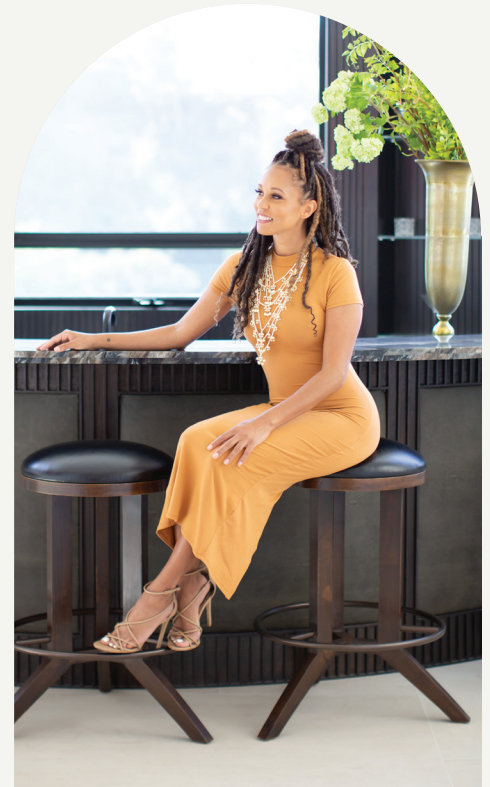
Portinatx

1-2185-9-103

9-Light Linear Chandelier
40"L x 9-1/4"W x 54-3/4"H



Adorn your home with the edgy, beautiful metal flowers of Portinatx. These hammered metal petals cascade down its linear frame, wearing an artisan Gold finish that contrasts perfectly with the Satin Black finish painted by craftsmen.



Atlas

“Luxe design is in the details.”



Breegan is enchanted with the magic of the Mediterranean and her love of this beautiful region inspired the design of Atlas. Dramatic, eye-catching olive branches shine in these organic style looks, which are finished by hand in Grecian Gold.



7-4001-6-31
6-Light Pendant
24"W x 30"H

1-4000-6-31
6-Light Chandelier
28-1/2"W x 30-3/4"H







“Everything has to be luxurious but also livable and comfortable. Pretty is easy, but, honestly, clarity comes with simplicity.”



Legacy

1-6219-4-322

4-Light Linear Chandelier
46"L x 8"W x 8"H



1-6219-4-89

4-Light Linear Chandelier
46"L x 8"W x 8"H



What's more luxurious and classic than stone? Panes of natural alabaster add ethereal warmth and vibrant veining. Legacy's textured details recall high-end range hoods, making this a great choice for lighting standout kitchens.

Heiress

Heiress is a simply stylish structure that is studded with dramatically curving metal leaves, creating a look that is both nature-inspired and edgy. It is decorated with a bold and beautiful Patinated Bronze finish that is hand painted by artisans.

1-4681-8-102
8-Light Chandelier
36"W x 31-3/4"H

“Lighting is the crown
jewel of design!”





Grecian

“Creating doesn’t just involve vision, it requires it.”



1-2579-6-26
6-Light Chandelier
30"W x 18"H

Grecian’s charming cascade of branches is decorated with leaves crafted from stained natural coco shell pieces. Each piece of coco shell is unique and the hand-crafted Champagne Mist finish adds a richness and texture that is sure to stun.





Festooned with leaves handcrafted from stained natural coco shell pieces, this is a standout example of Breegan's signature nature-inspired designs.



Monarch

1-8124-8-26
8-Light Pendant
36"W x 35-1/4"H

“Timeless interior design almost always incorporates organic elements in various ways.”



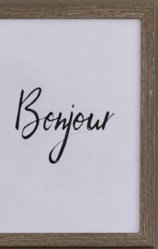
Pacha

“The look of our homes has the power to instantly lift our spirits.”

1-6914-10-47
10-Light Chandelier
25"W x 54"H

Bring some drama to your decor with these beautiful, edgy metal flowers that cascade down in three tiers. The hand-painted White Cashmere finish is boldly alluring, yet also understated.







Pharos

“With its warm golden hue and various levels of sheen, brass has a versatility that is unmatched!”





- 1-8005-2-127**
2-Light Linear Chandelier
50"L x 10"W x 11"H
- 1-8004-5-127**
5-Light Chandelier
30"W x 11"H
- 9-8002CP-1-127**
1-Light Sconce
8"W x 11"H x 11"E
- 7-8001-1-127**
1-Light Pendant
13"W x 13-1/4"H
- 9-8006CP-1-127**
1-Light Sconce
8"W x 18-1/4"H x 10"E



Pharos

Part of Moderne by Breegan Jane, Pharos brings her signature approachable modern luxury style to your home. Breegan loves how metallics elevate a design, as exemplified by the champagne-toned Noble Brass finish.



1-8003-6-127
6-Light Chandelier
38" W x 16-1/2" H







“It doesn't get more luxurious than classic brass.”

Talamanca

1-7508-9-127
9-Light Chandelier
32"W x 4"H

9-7506-1-127
1-Light Sconce
8"W x 4-3/4"H x 8-1/4"E

Talamanca uses integrated LED light sources held inside round structures to create a halo of illumination. Finished in a classic champagne-toned Noble Brass, it's the perfect way to add a dreamy glow to any room.





“I believe luxury should be and can be accessible for anyone who desires it.”

Lio



9-6506-1-127
1-Light Sconce
5"W x 12"H x 5-1/2"E

1-4180-8-127
8-Light Chandelier
31"W x 11-1/2"H

1-6508-5-127
5-Light Chandelier
28"W x 13"H



Breegan loves the timeless and elevating beauty of brass, like the champagne-toned Noble Brass finish in the Lio collection. This sleek and chic design showcases solid metal cylinders holding lights that create a concentrated, dramatic glow, adding glamour to any space.



SAVOY | breeganjane

3130 North Berkeley Lake Road NW | Duluth, GA 30096

TEL 800 801 1621 TEL 404 890 7540

SAVOYHOUSE.COM