



**BUILT IN AMERICA**  
**BASED IN AMERICA**  
**BUY AMERICA**



**Made in the USA**



**BABAA compliant strikes**

***The only electric strike manufacturer  
headquartered in the USA.***

**2025 PRICEBOOK  
CATALOG**

**Prices effective  
March 17, 2025**  
Prices subject to change without notice.

# Table of Contents

## **The Specialized Solutions Series**

- 3275VRP-LC pg. 5
- 3250SOM-LC "Strike-O-Matic"™ pg. 6
- 4100DBDL pg. 7-8

## **Premium Electric Strike Series**

- 3000 Series pg. 10-24
- 4100 Series pg. 25-30
- 4300 Series pg. 31-35
- 4800 Series pg. 36-40
- EN Series pg. 41-47

## **Light Commercial Electric Strikes**

- 00 Series pg. 48-50
- 2000 Series pg. 51-52
- 1000 Series pg. 52

## **Accessories**

- 4850ITL/ANSI-ITL pg. 54
- Signal Kit/Transformers pg. 55
- 017TDC-4/018-4 pg. 56
- Switches/Bells/Buzzers pg. 57
- Pushbuttons pg. 58

## **Other**

- Glossary pg. 59
- Dimensions pg. 60-62
- Notes Section pg. 63
- Strike Selector pg. 64-65
- Conditions of Sale pg. 66
- Cross Reference pg. 67

## **Discontinued**

- 012 - series strike - replace with a 4300CC electric strike OR a 30LC with a 478 faceplate
- 232 - Battery Operated Wireless Chime
- 201, 203 Chime kits - and 240 Chimes.
- 71DB and 71LDB pushbuttons - replace with other 71 series pushbuttons.
- 4850PoE and 4850LCD - replaced by the every day low current draw 4850
- 003 electric strike - see 006 for similar lockset compatibility
- Transformers - 522, 525, 5201, 5203, 5208 and 5209
- 234WB - strobe chime
- 296 wired chime
- 233 wireless chime



**EFFECTIVE DATE  
MARCH 17, 2025**

# Buy American Act

The **Buy American Act (Buy America)** seek to set a percentage of materials, labor, and manufacturing to support America's manufacturing companies and workers.

Complying with the current 2025 qualification of **65%**, or greater, are the following series and items:

## All Models in Series:

3000F Series  
3250SOM  
3275VRP  
4100 Series  
4300 Series  
4800 Series  
EN Series

## Within the 3000 Series:

234, 234F, 234X,  
234FX,  
258 & 258RD  
334  
3012 & 3024  
458LH & 458RH  
478 & 478X

Trine Access Technology is committed to supporting our  
American companies and workers.

**BUILT IN AMERICA**

**BASED IN AMERICA**

**BUY AMERICA**

# **SPECIALIZED SOLUTIONS**

## **ELECTRIC STRIKE SERIES**

**SOLUTIONS FOR UNIQUE INSTALLATIONS  
ONLY FROM TRINE**

### **3275VRP**

**THE VERTICAL  
ROD LATCH  
SOLUTION**



### **4100DBDL**

**THE  
DUAL  
MECHANISM  
SOLUTION**

**Top and Bottom Latches  
Provide emergency  
deadbolt override!**

**AND NIGHT LATCH FUNCTION FOR  
MORTISE LOCKS WITH DEADBOLTS**

### **3250SOM-LC**

**STRIKE-O-MATIC™**

**THE DOR-O-MATIC™  
SOLUTION**



**THE SMALLEST  
ELECTRIC STRIKE  
IN THE WORLD...  
DOES IT AGAIN!**







**BUILT IN AMERICA**  
**BASED IN AMERICA**  
**BUY AMERICAN**

# **SURFACE VERTICAL** **ROD SOLUTION**

## **3275VRP-LC**

The 3275VRP is the smallest electric strike solution for surface vertical rod latches.

Utilizes the heavy duty 3000F series mechanism.

For Use with:

- Sargent 97/68
- Arrow 3700/S1150/600
- Cal-Royal 9860V/F9860V
- Townsteel ED1200F
- Von Duprin 33/35
- Von Duprin 98/99 (Without the Deadlocking option)



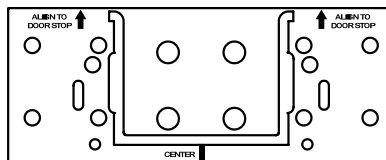
**ACTUAL  
SIZE**



**SPECIALIZED SOLUTIONS**  
**ELECTRIC STRIKE SERIES**

### **Features:**

- All stainless steel construction
- Horizontal adjustment
- Metal installation template included (acts as a mounting bracket, too)



- 1/16" spacer plate provided
- Include Trine's patented anchoring system for stability.
- 1,500 lbs holding force
- 500,000+ life cycles
- LC200 included - 12 - 24 DC  
**(DO NOT USE LC200 WITH AC POWER)**

**IMPORTANT - SEE PAGE 11 - NEW ELECTRONICS**

<b>VOLTAGE</b>	<b>PULL IN/HOLD AMPS</b>	<b>OHMS</b>
12VDC	0.420/.280	N/A
24VDC	0.840/.150	N/A
12VAC	0.840	13
16VAC	1.200	13
24VAC	1.700	13

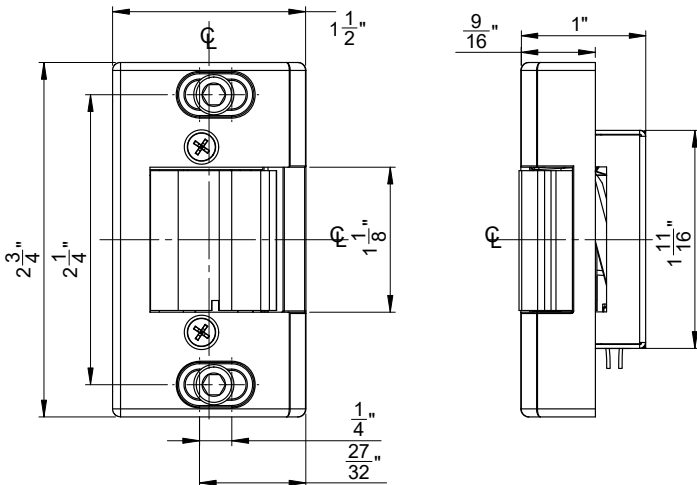
### **Finishes:**

**3275VRP-LC-ALUM**  
 (Aluminum Powder Coat)

**3275VRP-LC-DKBZ**  
 (Dark Bronze Powder Coat)

**Price:**  
**\$499**

**LC200 included**



# THE DOR-O-MATIC™ SOLUTION

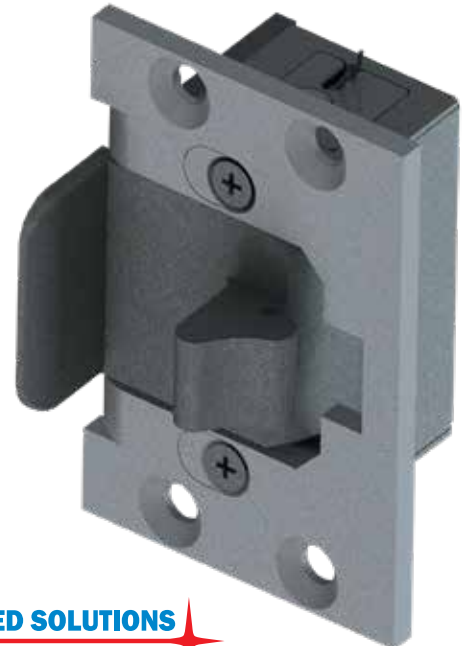


## 3250SOM-LC (STRIKE-O-MATIC™)

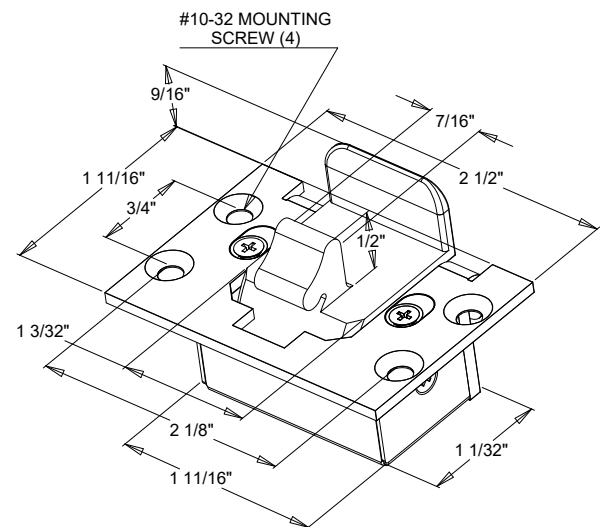
The only electric strike for use with Dor-O-Matic®  
*AKA The Falcon® Concealed Vertical Rod*

- Works with First Choice 3600 as well.
- Utilizes the reliable 3000F series mechanism.
- 1/8" Horizontal adjustment included.
- LC200 included - 12 - 24 DC (surge/kick back protection)  
(DO NOT USE LC200 WITH AC POWER)

VOLTAGE	PULL IN/HOLD AMPS	OHMS
12VDC	0.420/.280	N/A
24VDC	0.840/.150	N/A
12VAC	0.840	13
16VAC	1.200	13
24VAC	1.700	13



ACTUAL SIZE

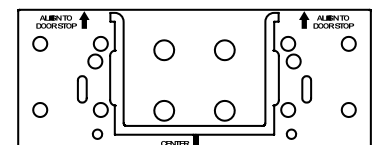


### Features:

- Two faceplates provided, aluminum & dark bronze finish
- All stainless steel mechanism
- Tested to Grade 1: BHMA - A156.31
- 1,500 lbs holding force
- 500,000+ life cycles
- Patent # US5076625A



Metal installation  
template included  
(& mounting bracket)



Finishes:  
3250SOM-LC-ALDB  
(Aluminum & Dark Bronze  
Powder Coat)

Price:  
**\$535**

LC200 included



**BUILT IN AMERICA**  
**BASED IN AMERICA**  
**BUY AMERICAN**

# **THE DEADBOLT** **SPLIT LATCH SOLUTION**

## **4100DBDL**

**SPECIALIZED SOLUTIONS**  
**ELECTRIC STRIKE SERIES**

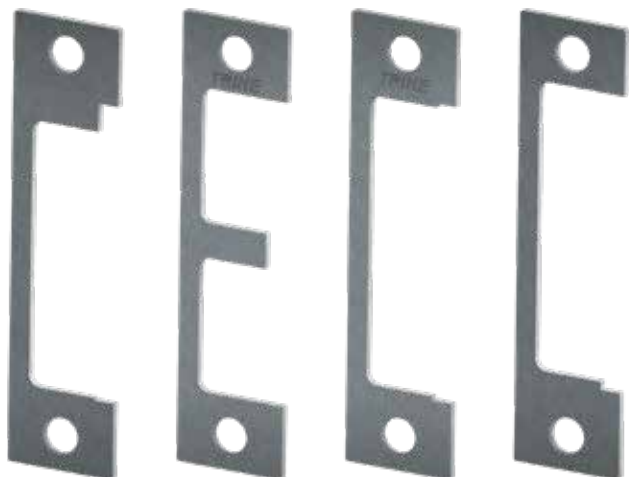
The only  
electric  
strike with  
two locking  
mechanisms  
**that function**  
**separately.**



Designed  
for deadbolt  
**privacy**,  
allowing for  
an emergency  
**override.**

Can be used for  
a night-latch  
function.  
(Leave the deadbolt  
latch un-powered).

**4 Faceplates**  
**included**



Best  
installation  
opportunities



# THE DEADBOLT SPLIT LATCH SOLUTION



## Key Features:

- Two independently operated latch systems.
- Use with mortise locks with dead bolts up to 1" projection.
- **Flexible:** Always be prepared!
  - Four faceplates included
  - 12 & 24DC, 12-24 AC, Low Current Draw
  - One Trim Skirt (matching finish)
- **Strong:** 2,000 lbs. holding force on each latch
- **Durable:** Exceeds 1,000,000 Life Cycles
- Works with the Schlage® L Series & Yale® 8700 Series **without** relocating mounting tabs.
- 1 - 11/16" backset.



## Standards:

- 3-hour fire rated – UL10C, Fire Tests of Door Assemblies.
- BHMA Grade 1: ANSI/BHMA A156.5
- UBC 7-2, Uniform Building Code.
- CAN4 S104, Standard Method for Fire Tests of Door Assemblies.
- NFPA 252 - Issue: 1999/01/01 Standard Methods of Fire Tests of Door Assemblies.
- ANSI/BHMA A156.31-2007
- Patent # US10781611B2



### HOW TO ORDER

Unit is Handed

HANDING OF DOOR IS ALWAYS DETERMINED FROM THE OUTSIDE.

4100DBDL Handing & Failsafe Chart
<i>Both latches Fail Secure (unlocks with power):</i> 4100DBDL-LH-(finish) 4100DBDL-RH-(finish)
<i>Both latches Fail Safe (locks with power):</i> 4100DBDL-RS-LH-(finish) 4100DBDL-RS-RH-(finish)
<i>Top latch (only) is Fail Safe (locks with power):</i> 4100DBDL-RST-LH-(finish) 4100DBDL-RST-RH-(finish)
<i>Bottom latch (only) is Fail Safe (locks with power):</i> 4100DBDL-RSB-LH-(finish) 4100DBDL-RSB-RH-(finish)

Electric Characteristics <span style="color: red;">*Per latch*</span>				
Voltage	Current/Amps	Ohms	Duty	Sound
12DC	0.310	39	Intm./Cont.	Silent
24DC	0.140	171	Intm./Cont.	Silent
12AC @ 60hz	0.280	39	Intm.	Buzz
16AC @ 60hz	0.380	39	Intm.	Buzz
24AC @ 60hz	0.550	39	Intm.	Buzz

## Finishes:

**4100DBDL-32D** (Satin Stainless Steel -- BHMA630)

**Price:**

**\$720**

## The following finishes are:

- **4100DBDL-US4** (Satin Brass – BHMA606)
- **4100DBDL-US10** (Satin Bronze – BHMA612)
- **4100DBDL-US10B** (Dark Bronze – BHMA613E)

**\$802**

## The following finishes are:

- **4100DBDL-32** (Polished Stainless Steel -- BHMA629)
- **4100DBDL-US3** (Bright Brass – BHMA605)

**\$845**

To order Fail-safe (RS) see Handling and Failsafe chart table to the right

RS is same cost as above

## LB option on the 4100DBDL

Utilizes IR optical active sensor for the deadbolt and the the latchbolt, with mortise devices. Electrical information is the same as pg 39.

Add "LB" to the 4100DBDL or 4100DB  
Example:  
- 4100DBLB-32D

**Dual Relay**  
add \$150.00  
to the base price



# THE FAMILY OF ONE BOX SOLUTIONS

## 323478LC FOR CYLINDRICAL LOCKSETS



THE SMALLEST ELECTRIC STRIKE IN THE WORLD

## 323478F-LC

FOR CYLINDRICAL  
LOCKSETS

THE SMALLEST  
HEAVY DUTY  
FIRE RATED  
ELECTRIC STRIKE  
IN THE WORLD



3 HOUR  
FIRE  
RATED



FOR CYLINDRICAL &  
MORTISE LOCKS

## 4100

4 FACEPLATES  
INCLUDED



3 HOUR  
FIRE RATED



FOR RIM  
PANIC EXIT  
DEVICES

## 4800F



THREE    
HOUR  
FIRE RATED

FIRE RATED AT NO  
ADDITIONAL COST



EVERYDAY LOW  
CURRENT DRAW

## 4850

FOR RIM PANIC  
EXIT DEVICES

HANDLES BOTH 1/2"  
& 3/4" LATCHES

NOW HANDLES UP  
TO A 1" LATCH



EVERYDAY LOW  
CURRENT DRAW



## 4300

FOR CYLINDRICAL  
& DEADLATCHES

1/4" Horizontal  
Adjustment.

Tall Latch Cavity.



THE MOST FLEXIBLE STRIKE AVAILABLE!

## EN400CMRP

THE GATE SOLUTION  
FOR CYLINDRICAL,  
MORTISE, & RIM  
PANIC EXIT DEVICES



OUTDOOR  
RATED



3 HOUR  
FIRE RATED



# **THE ONE BOX SOLUTION**

## **THE SMALLEST ELECTRIC STRIKE IN THE WORLD**



**THE  
STANDARD**



**HEAVY DUTY  
& FIRE RATED**

**SMALL STRIKES - FIRE RATED OR NOT  
THE WAY YOU NEED THEM.**



**MAKING SMALL STRIKE INSTALLATIONS  
EVEN EASIER**

**CHECK OUT THE  
ANSI-ITL  
ON PAGE 54**



**BUILT IN AMERICA  
BASED IN AMERICA  
BUY AMERICAN**

**Only 1" Total Backset  
3000 Series**

### Key Features

- Accepts up to 5/8" latch throw
- 500,000 + life cycles
- 1,500 + lbs. holding force (1,200 lbs. for 334)
- Dynamic Force 70 ft/lb.
- Tested to Grade 1: BHMA - A156.31
- Fail-safe Option - "RS" (locks with power)

**3000 series is not recommended for use on uncovered exterior doors.**

See page 21 for 3000 series Accessories

### Standards

- 3000F models - UL 10C 3 hour fire rated

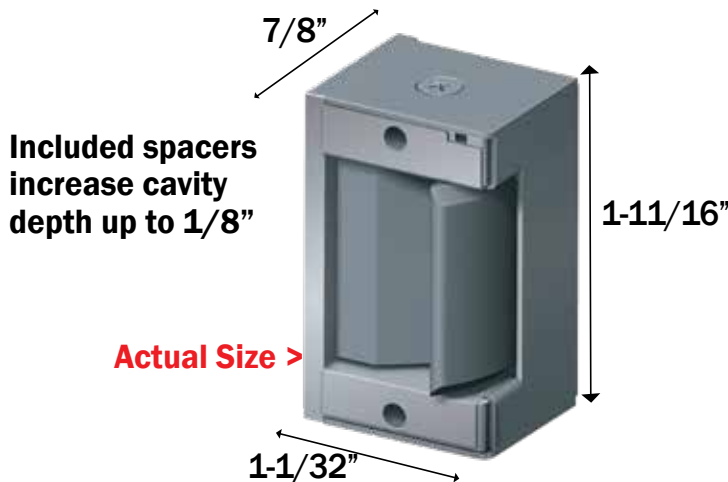


Heavy Duty Fire Rated options page 13 and 14

MODEL	VOLTAGE	CURRENT/AMPS	OHMS	DUTY	SOUND	WIRE COLOR
<b>3012</b>	12VDC	.480	25	Intermittent	Silent	Blue
<b>3024</b>	24VDC	.240	100	Intermittent	Silent	White

(LC200 not required for 3012/3024 models)

### 3012 & 3024 Mechanism



Model	Voltage	Function	Duty
<b>3012</b>	12DC	Fail Secure	Intermittent
<b>3024</b>	24DC	Fail Secure	Intermittent

**Price:**  
\$170  
\$170

### 30LC & 30RS Mechanism

The LC200 is included with 30LC & 30RS and must be placed within 15' feet of the mechanism.  
\*See page 21 for more information.



Item	Voltage	Function	Duty
<b>30LC</b>	11-29 DC	Fail Secure	Continuous
	11-29 AC	Fail Secure	Intermittent
<b>30RS</b>	11-29 DC	Fail Safe	Continuous

**Price:**  
\$215  
\$215

### \*\* NEW LC VOLTAGE CHARACTERISTICS - USE LC-200 FOR DC ONLY \*\*

MODELS	VOLTAGE	PULL IN/HOLD AMPS	OHMS	DUTY	SOUND
<b>323478LC/</b>	12VDC	.420/.280	N/A	Intermittent/Continuous	Silent
<b>3258458LC/</b>	24VDC	.840/.150	N/A	Intermittent/Continuous	Silent
<b>323478F-LC/</b>					
<b>323478FX-LC</b>	12VAC	0.840	11	Intermittent	Buzz
<b>30LC/30RS</b>	16VAC	1.200	11	Intermittent	Buzz
	24VAC	1.70	11	Intermittent	Buzz

**\*\* Must use LC200 on DC for all LC/RS units.**

**\*\* Do not use LC-200 for AC Power - for AC wire direct to 30LC mechanism\*\***

# THE SMALLEST ELECTRIC STRIKE IN THE WORLD THE 3000 SERIES



FOR CYLINDRICAL LOCKS

## 323478LC KIT

### 323478LC Includes:

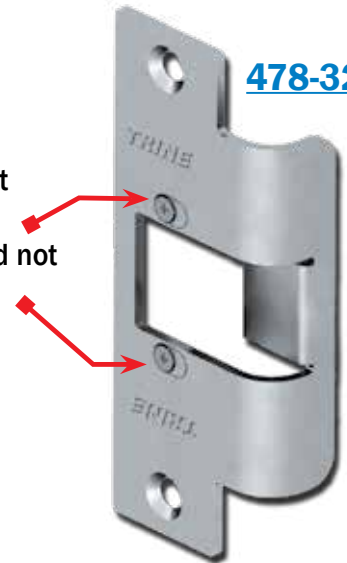
- (1) 234-26D – 2 3/4" Faceplate
- (1) 234X-375-26D – 2 3/4" Faceplate with extended ramp →
- (1) 478-32D – 4 7/8" Faceplate
- (1) 30LC - 11-29 AC & DC Mechanism

**234X-26D**



Patented horizontal adjustment feature – guaranteed not to move!

**478-32D**



**30LC**



Designed for Timely®/Raco®/Redi®/IDP® Frames. Great for Wood!

**234-26D**



For the smallest electric strike cutout!

Need an Installation Tool?  
See page 54

**Finishes:**  
**323478LC-32D**  
(Satin Stainless Steel)

**Price:**  
**\$286**

FOR DEADLATCHES AND ALUMINUM FRAMES

## 3258458LC KIT

### 3258458LC Includes:

- (1) 258 – 2 5/8" Faceplate
- (1) 458LH – 4 5/8" Left Handed Faceplate
- (1) 458RH – 4 5/8" Right Handed Faceplate
- (1) 30LC - 11-29 AC & DC Mechanism

**80% LESS FRAME CUTTING.**

**Smallest aluminum solution available - Great for glass store fronts**

Fills frame preparation for many Adams Rite® Locks without relocating tabs.

**Finishes:**  
**3258458LC-ALUM**  
(Aluminum Powder Coat)

**Price:**  
**\$305**

**3258458LC-DKBZ**  
(Dark Bronze Powder Coat—BHMA613E) **\$305**

**258**



**30LC**



**458RH**



**458LH**



See page 19-20 for cut out details.





**BUILT IN AMERICA**  
**BASED IN AMERICA**  
**BUY AMERICAN**

**THE SMALLEST FIRE RATED**  
**ELECTRIC STRIKE IN THE WORLD**

# 323478F-LC KIT

- Heavy Duty Stainless Steel Construction
- 1" Total Backset
- 1/8" Horizontal Adjustment
- 12-24 AC & DC
- Includes LC200 & Trim skirt (CCFP)

## Standards:

- 3-hour fire rated – UL10C, Fire Tests of Door Assemblies.
- Factory Tested to Grade 1: BHMA - A156.31 - Heavy Duty



**NOTE: Fire listing is always void when using fail safe (RS) action. ❌**

**FORGING**  
**NEW SOLUTIONS**  
**WITH ELECTRIC STRIKES**



**1/8" HORIZONTAL**  
**ADJUSTMENTS ON ALL**  
**FACEPLATES**

see pg. 15  
for details



See page 11 for electrical details.

Finishes:	Price:
<b>323478F-LC-32D</b> (Satin Stainless Steel — BHMA630)	<b>\$499</b>
<b>323478F-RS-32D</b> ❌ (Satin Stainless Steel — BHMA630)	<b>\$499</b>
<b>323478F-LC-DKBZ</b> (Dark Bronze Powder Coat — BHMA613E)	<b>\$523</b>
<b>323478F-RS-DKBZ</b> ❌ (Dark Bronze Powder Coat — BHMA613E)	<b>\$523</b>

**Need an**  
**Installation**  
**Tool?**

**See page 54**

# 323478FX-LC

- Same features as above!
- Contains the 478X-375 Faceplate for Timely®/Redi®/Raco®/IDP® Frames (instead of the 478 Faceplate.)

Finishes:	Price:
<b>323478FX-LC-32D</b> (Satin Stainless Steel — BHMA630)	<b>\$515</b>
<b>323478FX-LC-DKBZ</b> (Dark Bronze Powder Coat — BHMA613E)	<b>\$535</b>

**EXTENDED LIP**  
**STRIKE SOLUTION!**



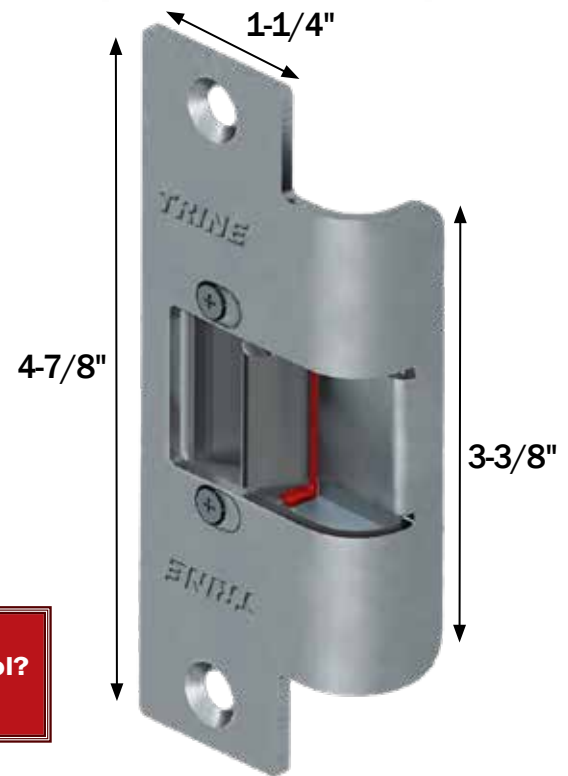
see pg. 17  
for details

# 3478F

- Heavy duty stainless steel construction
- 1" total backset
- 1/8" horizontal adjustment
- Two 1/16" shims for depth adjustment
- Trim skirt (CCFP) included (see pg 15\*)
- 3478F-LC includes LC200

See page 11 for electrical details.

Need an  
Installation Tool?  
See page 54



## Standards:

- 3-hour fire rated – UL10C, Fire Tests of Door Assemblies.
- Tested to Grade 1 - Heavy Duty

\* NOTE: WH fire listing is void when using fail safe action.



Intertek



Finishes:	Price:
<b>3478F-LC-32D</b> (Satin Stainless Steel — BHMA630)	
* <b>3478F-RS-32D</b> (Satin Stainless Steel — BHMA630)	<b>\$415</b>
<b>3478F-LC-DKBZ</b> (Dark Bronze Powder Coat — BHMA613E)	
* <b>3478F-RS-DKBZ</b> (Dark Bronze Powder Coat — BHMA613E)	<b>\$425</b>
<b>3478F-12DC-32D</b> (Satin Stainless Steel — BHMA630)	
<b>3478F-24DC-32D</b> (Satin Stainless Steel — BHMA630)	<b>\$382</b>
<b>3478F-12DC-DKBZ</b> (Dark Bronze Powder Coat — BHMA613E)	
<b>3478F-24DC-DKBZ</b> (Dark Bronze Powder Coat — BHMA613E)	<b>\$404</b>

## FIRE RATING IS THE EVERYDAY STANDARD

Compare the 3478F, the 323478F, the 4800F for rim panics, or even the outdoor rated EN400 against the competition.

*We offer a stronger, more durable, fire rated product... for less.*





**BUILT IN AMERICA**  
**BASED IN AMERICA**  
**BUY AMERICAN**

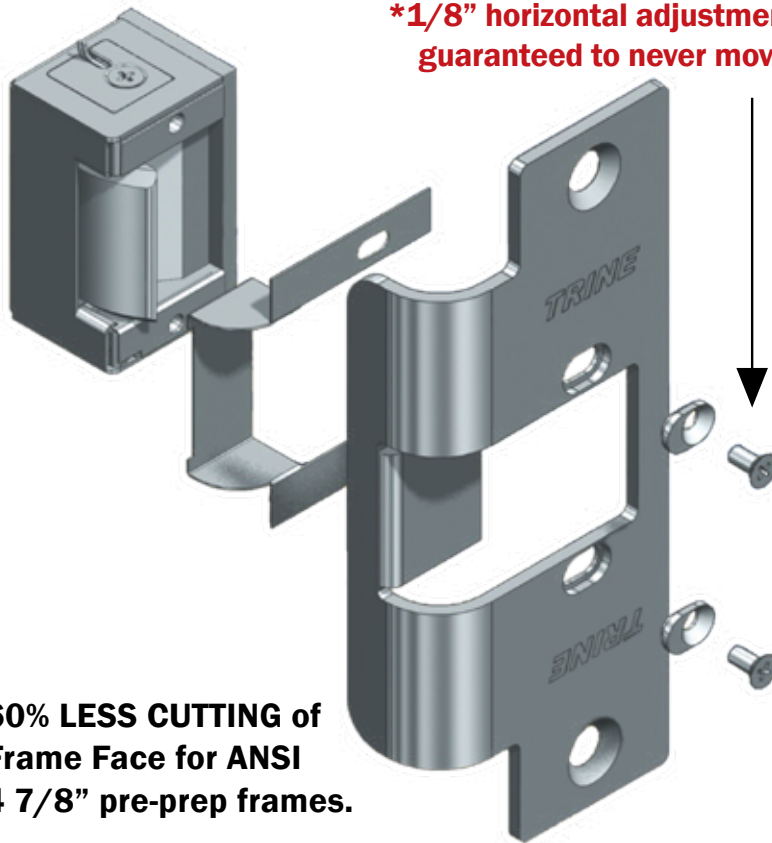
**SMALLEST ELECTRIC STRIKE IN THE WORLD**  
**THE 3000 SERIES**

# 478

**Adjustable 4-7/8" ANSI standard faceplate**

**\*1/8" horizontal adjustment  
 guaranteed to never move.**

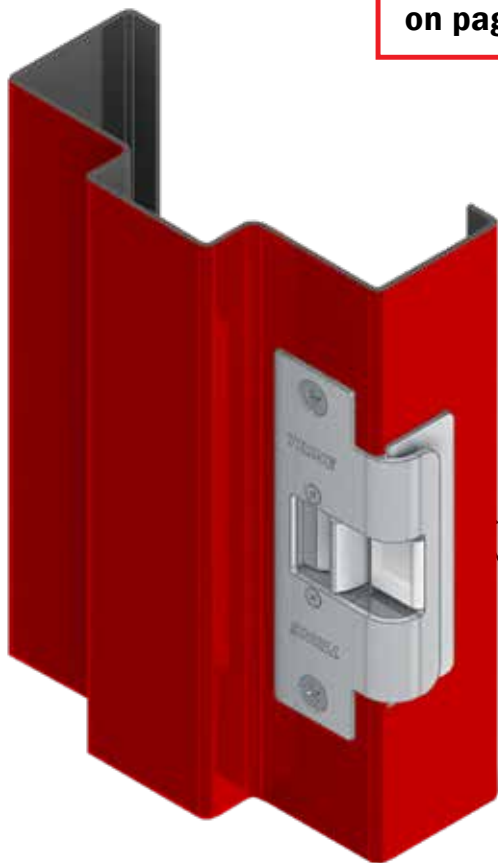
For new or replacement installation in wood or metal frames. Use with cylindrical locksets having up to 5/8" throw, based on 1/8" door gap.



**Dimensions  
 on page 60.**

**60% LESS CUTTING of  
 Frame Face for ANSI  
 4 7/8" pre-prep frames.**

**No ugly black ramp!**



**478-CCFP**  
**INCLUDED WITH THE  
 478 FACEPLATE!**

**Competitor Cutout Filler Plate**

Stainless plate designed to fill in the cut left by competitor models.

Finishes:	Price:
<b>478-32D</b> (Satin Stainless Steel — BHMA630)	<b>\$46</b>
<b>478-32</b> (Polished Stainless Steel — BHMA629)	<b>\$73</b>
<b>478-US10B</b> (Dark Bronze Powder Coat — BHMA613E)	<b>\$62</b>
<b>478-US3</b> (Bright Brass — BHMA605)	<b>\$85</b>
<b>478-US4</b> (Satin Brass — BHMA606)	<b>\$70</b>
<b>RD</b> (Radiused Corners)	<b>add \$10</b>
<b>478RO and 478LO (page 16)          same cost as above.</b>	
<b>Match with any 3000 Mechanism:          3012, 3024, 30LC, 30RS</b>	

**Need an Installation  
 Tool?**  
**See page 54**

## ANSI FACEPLATE SOLUTIONS

The 3000 Series are the  
**'Notch and Go'**  
Electric Strikes

# 478

Requires a small rectangular cut  
and has the smallest backset of any  
ANSI electric strike. Compared to  
traditional electric strikes there is  
no competition.

**NO NEED  
TO REMOVE  
DUSTBOX**

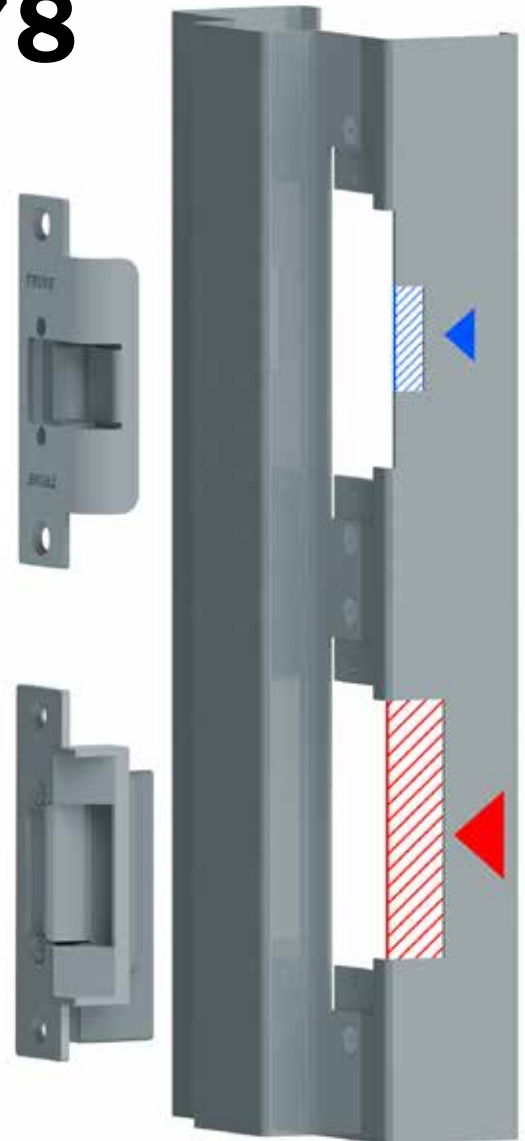
With only a 1"  
total backset  
there is no need  
to remove the  
dustbox in most  
installations

**UNLIKE 'no-cut'  
electric strikes.**

478 Faceplate  
Just a small  
notch to install.

**Compare cutting!**

Typical 4 7/8"  
Electric Strike  
Dust Box must be  
removed.



**ACCOMMODATE FOR DOOR SAG** - replace your 478 with a 478RO (right offset)  
and the 478LO (left offset).

### 478LO / 478RO Faceplate

*Same dimensions as 478 - except 3/16" lower cavity offset.*

**60% LESS FRAME CUTTING** of Frame Face for ANSI 4 7/8" pre-prep frames. The strike opening on this face plate is **offset by 3/16"** from the center to accommodate door sag for the 478 (just change faceplates, and use the same mechanism).

#### HOW TO ORDER:

SEE PAGE 15 FOR PRICING.

**TO ORDER ADD RO** (FOR RIGHT OFFSET) **OR**  
**LO** (FOR LEFT OFFSET).

EX: 478RO-32D OR 478LO-10B



**BUILT IN AMERICA**  
**BASED IN AMERICA**  
**BUY AMERICAN**

**SMALLEST ELECTRIC STRIKE IN THE WORLD**

**THE 3000 SERIES**

# 478X-375

**Extended Lip Faceplate**

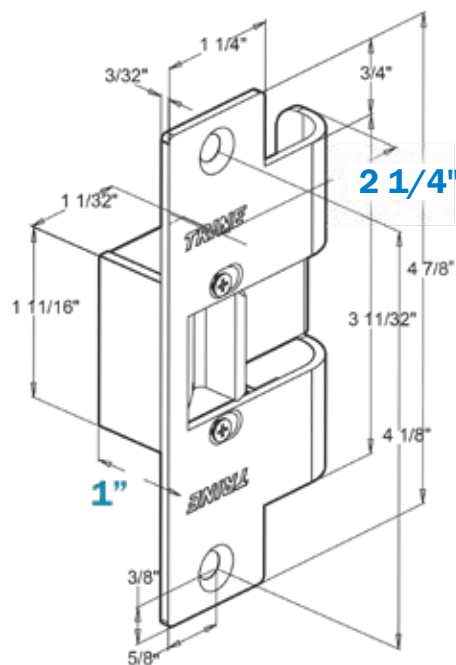


**Built in  
trimskirt.**

Frame features an extended ramp to accommodate additional face of **Timely®/Redi®/Raco®/IDP®** frames. Use with cylindrical locksets and deadlatches having up to 5/8" throw, based on 1/8" door gap.

**Provides the only professionally finished look for wood frames with trim.**

**Ramp Extends  
.375"**



**Made for  
Timely®/Raco®/  
Redi®/IDP® Frames**

**Need Fire  
Rated?**

See pg 13 for  
the  
**323478FX-LC**  
3 hour fire rated  
version

## GOODBYE UNATTRACTIVE BLACK RAMPS!

- Extended ramp (.375") accommodates snap-on additional frame face of Timely® & Redi® Frames.
- Eliminates traditional 4 7/8" ANSI strike cutting and black ramp extensions.
- 1/8" Horizontal Adjustments help prevent door pre-load.

**See page 24 for wood and metal frame preps.**

### Finishes:

### Price:

**478X-375-32D**

(Satin Stainless Steel — BHMA630)

**\$65**

**478X-375-US10B**

(Dark Bronze Powder Coat — BHMA613E)

**\$85**

**478X-375-US3**

(Bright Brass — BHMA605)

**\$95**

**RD** (Radiused Corners)

**add \$10**

**Match with any 3000 Mechanism:**  
3012, 3024, 30LC, 30RS

# THE SMALLEST ELECTRIC STRIKE IN THE WORLD

## 234 & 234X Faceplates



### 234 / 234F Faceplate

**Smallest Electric Strike in the World**

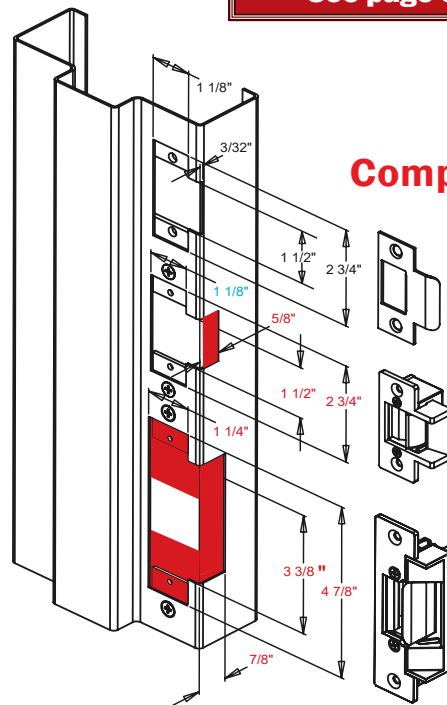
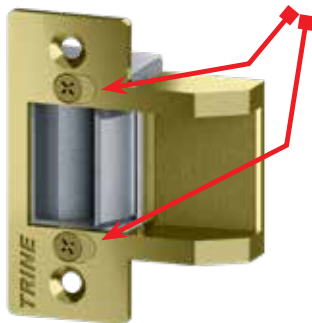
For new or replacement installations in metal frames. Use with cylindrical locksets having up to 5/8" throw, based on 1/8" door gap.



**Need an Installation Tool?**  
**See page 54**

Finishes:	Price:
<b>234-26D</b> (Satin Chrome — BHMA651)	<b>\$32</b>
<b>234-US10B</b> (Dark Bronze Powder Coat — BHMA613E)	<b>\$37</b>
<b>Stainless Steel Faceplates:</b>	
<b>234F-32D</b> (Satin Stainless Steel — BHMA630)	<b>\$60</b>
<b>234F-US3</b> (Bright Brass — BHMA605)	<b>\$87</b>
<b>Match with any 3000 Mechanism:</b> 3012, 3024, 30LC, 30RS	

**1/8" Adjustment available on 234F and 234FX faceplates**



**Compare cutting!**

**2 3/4" Strike Plate**

**234 Faceplate**

**Typical 4 7/8" Electric Strike**

**Notch an Go electric strike.**

Reduced cutting means **stronger frames!**

**Made for Timely®/Raco®/Redi®/IDP® Frames**

### 234X-375 / 234FX-375

**Extended Ramp Faceplate**



Standard ANSI prep features an extended ramp to accommodate additional face of Timely®/Redi®/Raco®/IDP® frames. Ramp is extended 3/8". For new or replacement installations. Use with cylindrical locksets having up to 5/8" throw, based on 1/8" door gap.

Finishes:	Price:
<b>234X-375-26D</b> (Satin Chrome — BHMA651)	<b>\$39</b>
<b>234X-375-US10B</b> (Dark Bronze Powder Coat — BHMA613E)	<b>\$47</b>
<b>Stainless Steel Faceplates:</b>	
<b>234FX-375-32D</b> (Satin Stainless Steel — BHMA630)	<b>\$68</b>
<b>234FX-375-US3</b> (Bright Brass — BHMA605)	<b>\$96</b>
<b>Match with any 3000 Mechanism:</b> 3012, 3024, 30LC, 30RS	

**Great for wood frames and wood jambs with casing.**



**BUILT IN AMERICA**  
**BASED IN AMERICA**  
**BUY AMERICAN**

# 258 & 258RD Faceplates



## 258 Faceplate

80% less frame cutting when compared to typical 4 7/8" electric strike installations.

For new or replacement installations in aluminum frames. Use with 4510, 4710 & 4750 Adams Rite® dead latches. Replaces 4502 strike plate with slight modification.

**Dimensions**  
on page 60.

### Finishes: Price:

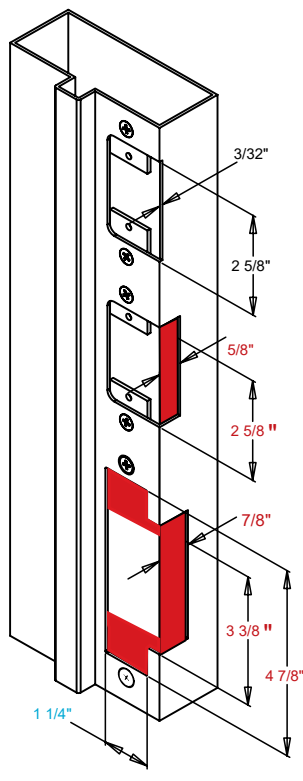
**258-26D**  
(Satin Chrome — BHMA651) **\$40**

**258-US10B**  
(Dark Bronze Powder Coat -- BHMA613E) **\$44**

Match with any 3000 Mechanism:  
3012, 3024, 30LC, 30RS



**Best solution  
for installing  
in aluminum.**



### Compare cutting!

**2 5/8"**  
**Strike Plate**

**258 Faceplate**  
**Can use existing tab holes.**

**Typical 4 7/8"**  
**Electric Strike**  
**New tabs are required.**

No need to relocate tabs or make unnecessary cuts.

Makes for a stronger and better looking installation!



## 258RD Radius Faceplate

80% less door cutting when compared to typical 4 7/8" electric strike installations.

For new or replacement installations in aluminum doors. Use with 4510, 4710 & 4750 Adams Rite® dead latches. Replaces 4502 & 4900 strike plate with slight modification.

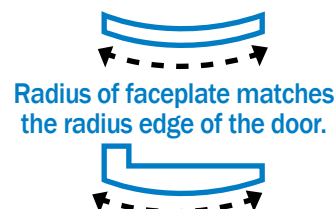
**Dimensions**  
on page 60.

### Finishes: Price:

**258RD-26D**  
(Satin Chrome — BHMA651) **\$43**

**258RD-US10B**  
(Dark Bronze Powder Coat — BHMA613E) **\$49**

Match with any 3000 Mechanism: 3012, 3024, 30LC, 30RS





# THE SMALLEST ELECTRIC STRIKE IN THE WORLD

## 458 Faceplate



### 458 Faceplate

**80% LESS FRAME CUTTING.**

Fills the frame preparation of Adams Rite® MS Locks without relocating tabs for 4 7/8" electric strikes. For new or replacement installations in aluminum frames.

Replaces Adams Rite® 4730/4501 strike plate with slight frame modification. Including the 4900 with pin.

#### Finishes: Price:

**458-ALUM** **\$75**  
(Aluminum Powder Coat)

**458-DKBZ** **\$75**  
(Dark Bronze Powder Coat  
— BHMA613E)

Match with any 3000 Mechanism:  
3012, 3024, 30LC, 30RS

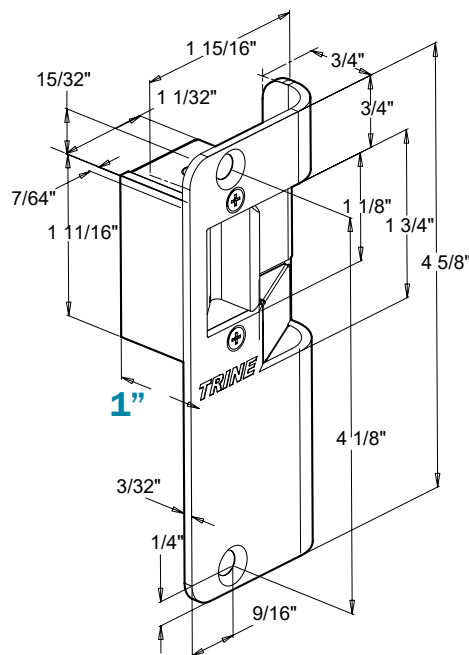
**\*\*Must Specify Handing\*\***

**RH or LH**  
example: 458-ALUM-LH

**Compare cutting!**

No need to relocate tabs or make unnecessary cuts.

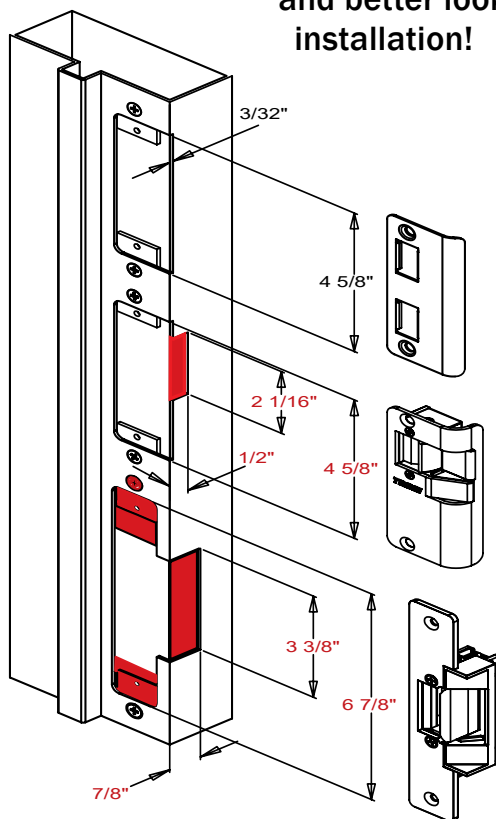
Makes for a stronger and better looking installation!



**4 5/8"**  
**Strike Plate**

**458 Faceplate**  
Can use existing tab holes.

**Typical 6 7/8"**  
**Electric Strike**  
New tabs are required.



**RH-Right  
Handed Strike  
Shown**

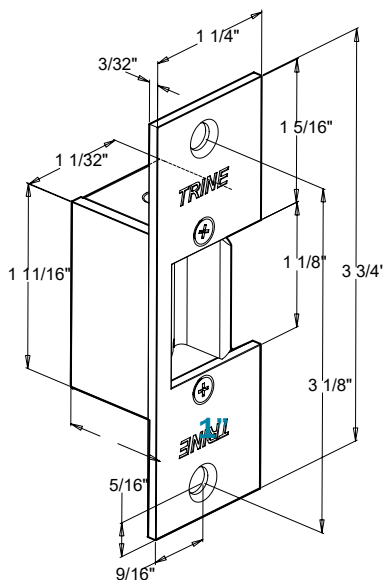


**BUILT IN AMERICA**  
**BASED IN AMERICA**  
**BUY AMERICAN**

# 334 Faceplate & 3000 Accessories

## 334 Faceplate

For new or replacement installations in wood frames. Use with cylindrical locksets with up to 5/8" throw, based on 1/8" door gap.



Finishes:	Price:
<b>334-26D</b> (Satin Chrome -- BHMA651)	<b>\$40</b>
<b>334-US3</b> (Bright Brass -- BHMA605)	<b>\$50</b>
<b>334-US4</b> (Satin Brass -- BHMA606)	<b>\$47</b>
Match with any 3000 Mechanism: 3012, 3024, 30LC, 30RS	

## LC200

An external line conditioner regulating input voltages, 12 & 24 DC, and conditions the output for the activation period. Provides current/voltage surge & kickback protection.

**MUST USE LC-200 WITH  
30LC/30RS FOR DC POWER**



**Price:**  
**\$76**

## Piezo Buzzer for "Standard Models"

- **BZ-12**: Audible buzzer for 12DC power
- **BZ-24**: Audible buzzer for 24DC power

## Piezo Buzzer for "LC Models"

- **BZ-6**: Audible buzzer for 6DC power



**Price:**  
**\$27**

## 3000-AK: Accessories Kit for the 3000 series:

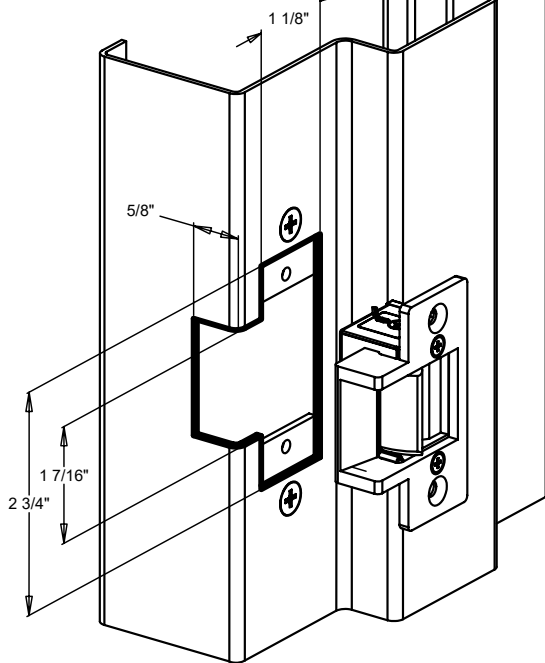
*Includes:* (2) 1/8" strike shims. (2) 1/16" faceplate shims (2) 1/8" Horizontal adjustment tabs. (2) Long faceplate screws. (2) Short faceplate screws.

**Price:**  
**\$33**

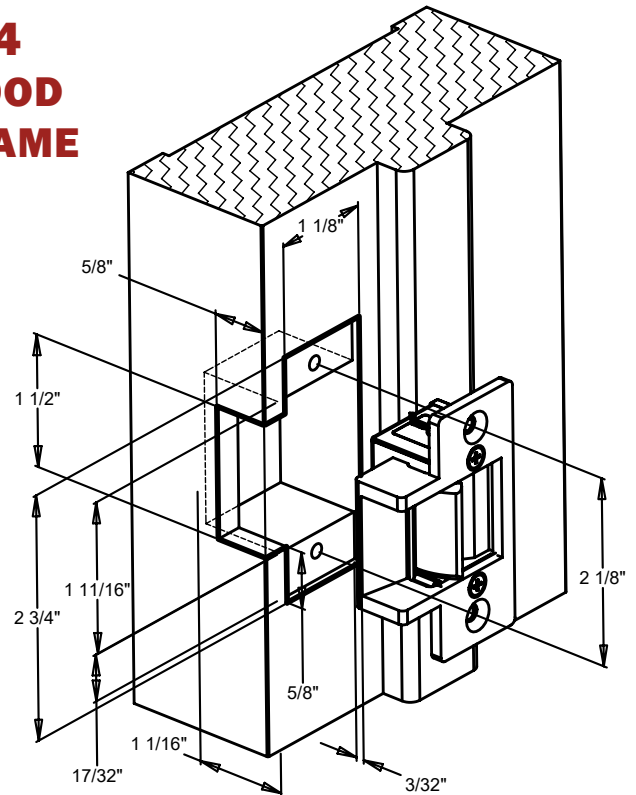
# FRAME PREPS THE 3000 SERIES



## 234 & 234F HOLLOW METAL FRAME

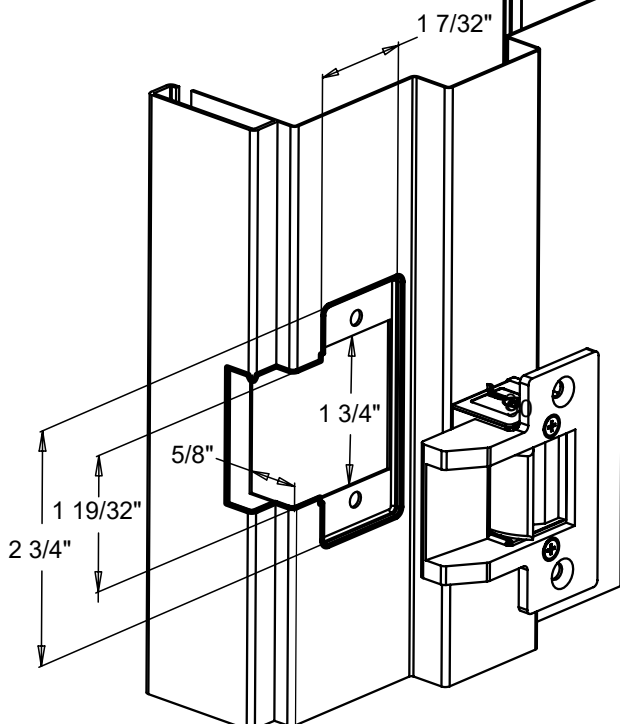


## 234 WOOD FRAME

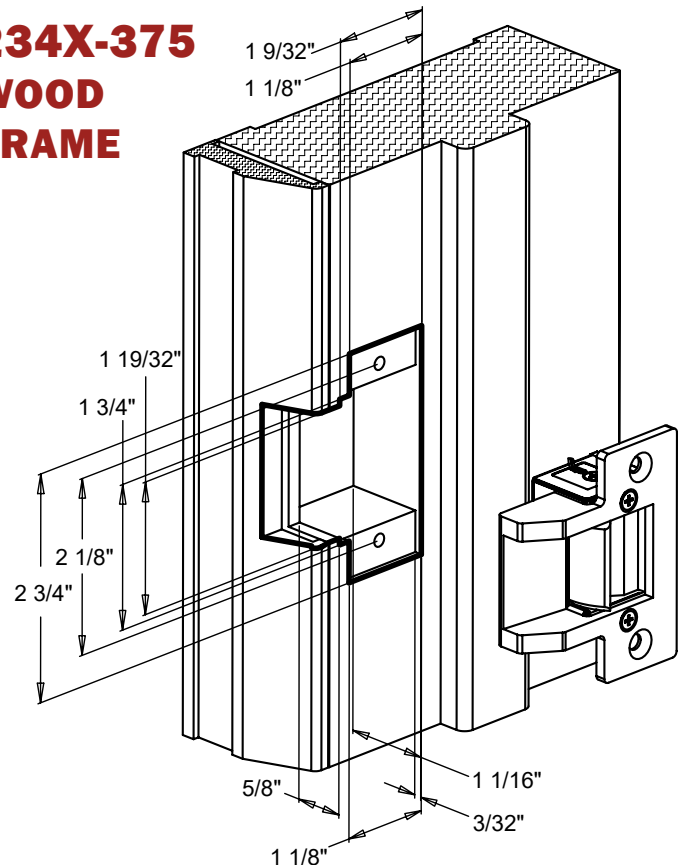


NOTE: USE 2 INCH LONG (OR LONGER) WOOD SCREWS FOR MOUNTING.

## 234X-375 & 234FX-375 TIMELY®/REDI®/ RACO®/IDP® FRAMES



## 234X-375 WOOD FRAME



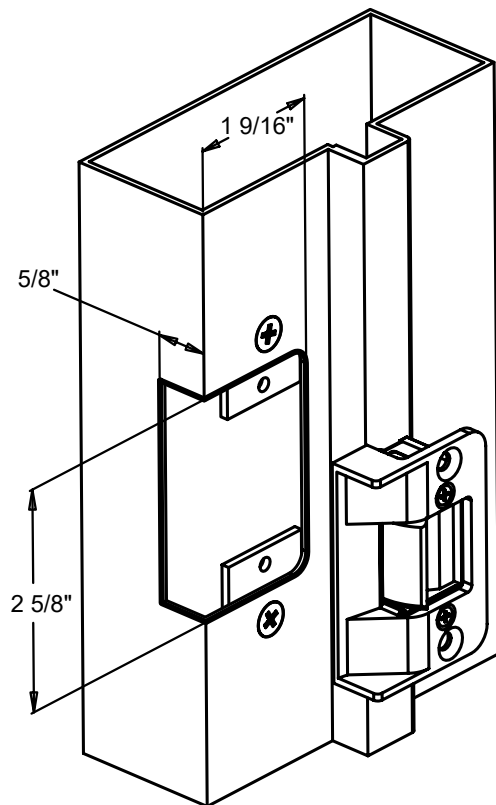
NOTE: USE 2 INCH LONG (OR LONGER) WOOD SCREWS FOR MOUNTING.



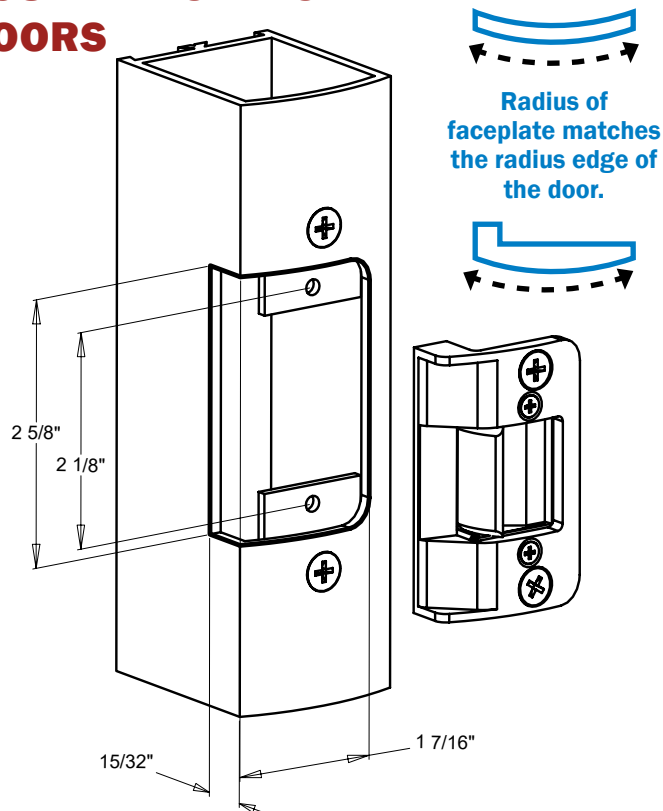
**BUILT IN AMERICA  
BASED IN AMERICA  
BUY AMERICAN**

# FRAME PREPS THE 3000 SERIES

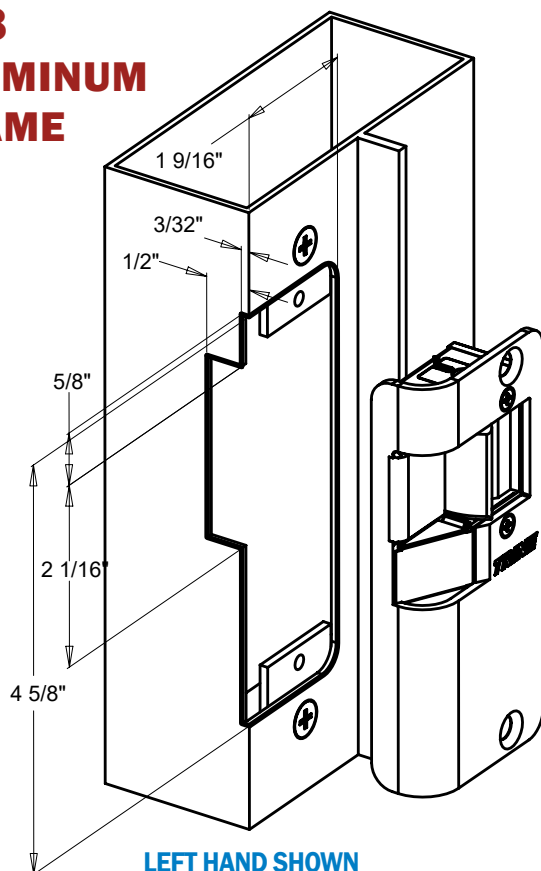
## 258 ALUMINUM FRAME



## 258RD ALUMINUM DOORS



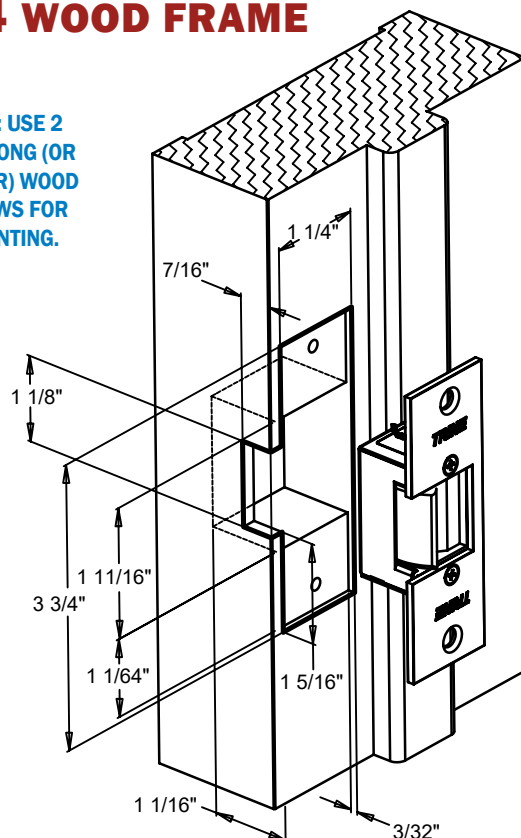
## 458 ALUMINUM FRAME



LEFT HAND SHOWN

## 334 WOOD FRAME

NOTE: USE 2  
INCH LONG (OR  
LONGER) WOOD  
SCREWS FOR  
MOUNTING.

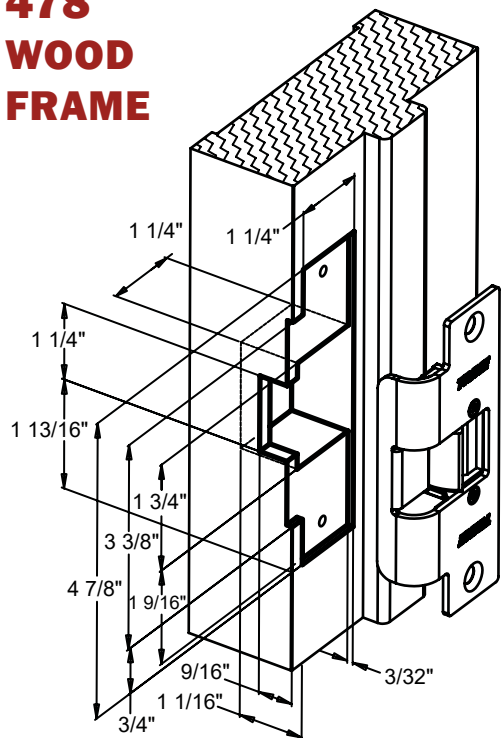




# FRAME PREPS THE 3000 SERIES

**TRINE**  
ACCESS TECHNOLOGY.

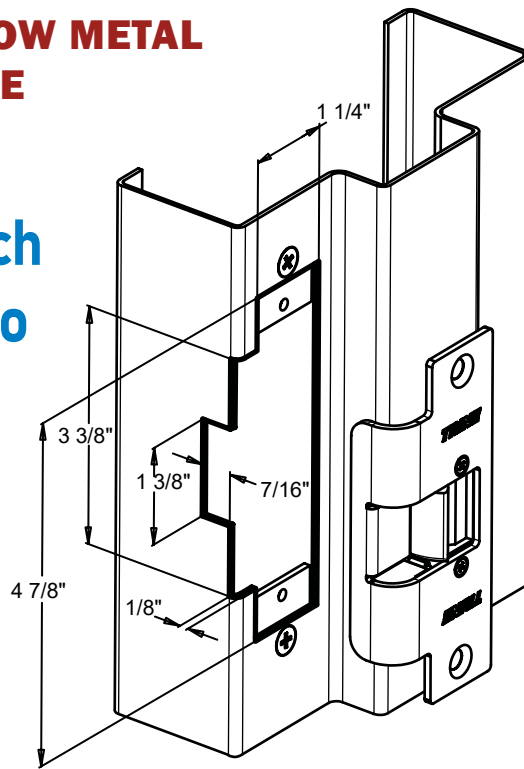
## 478 WOOD FRAME



NOTE: USE 2 INCH LONG (OR LONGER) WOOD SCREWS FOR MOUNTING.

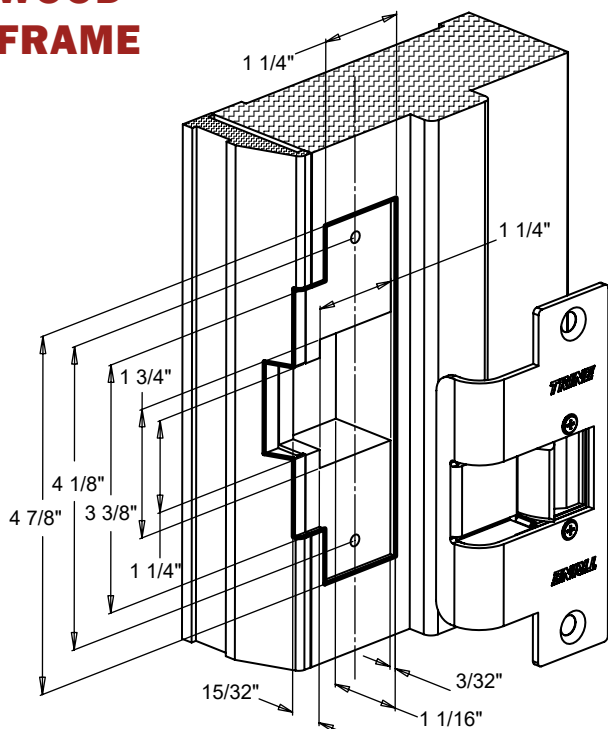
## 478 HOLLOW METAL FRAME

Notch  
& Go



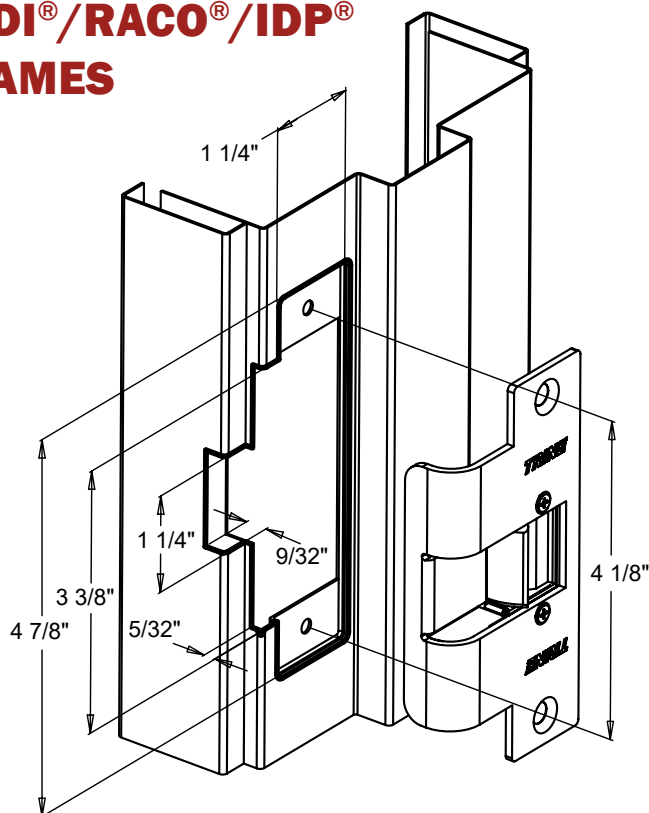
## 478X-375 WOOD FRAME

BEST LOOKING WOOD  
INSTALLATION



NOTE: USE 2 INCH LONG (OR LONGER) WOOD SCREWS FOR MOUNTING.

## 478X-375 TIMELY®/ REDI®/RACO®/IDP® FRAMES



# **THE ONE BOX SOLUTION**

## **FOR CYLINDRICAL AND MORTISE LOCKS**

# **4100**

**WITHOUT DEADBOLTS**  
**(CUT LESS!)**



**WITH DEADBOLTS**



## **4100DB & 4100CDBM**

**SINGLE LATCH - NIGHTLATCH ONLY  
FUNCTION FROM THE 4100 SERIES**

**SIMPLE TO USE, NO HANDING,  
ALL THE SAME GREAT QUALITIES AS  
THE 4100 ELECTRIC STRIKE**

# THE ONE BOX SOLUTION

## FOR CYLINDRICAL AND MORTISE LOCKS



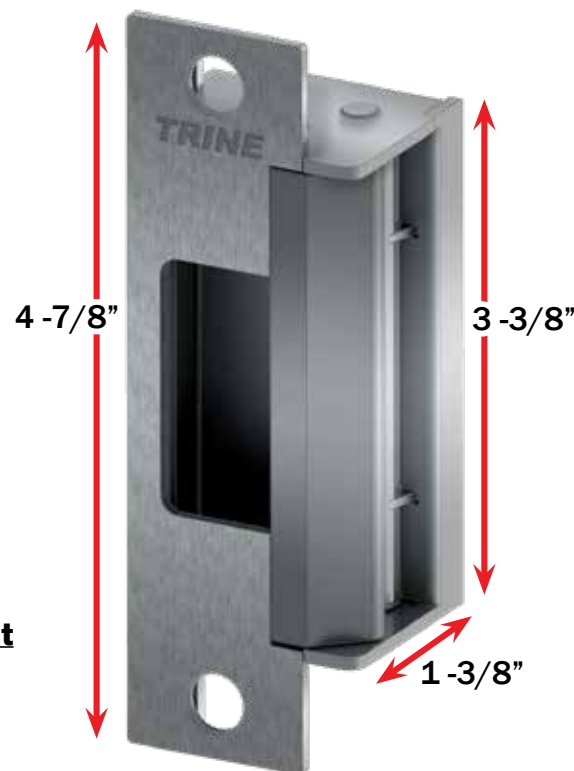
### Key Features:

Use with cylindrical locksets, mortise locks without dead bolts and mortise exit devices.

- 1 - 3/8" shallow backset allows the 4100 to be used in 2" face fire rated frames with 1/2" sheetrock ingress.
- **Flexible:** Always be prepared!
  - Four faceplates included
  - 12 & 24DC, 12-24 AC, Low Current Draw
  - One Trim Skirt (matching finish) which covers competitor cutouts
- **Strong:** 3,000 lbs. of Holding Force (factory tested)
- **Durable:** Exceeds 1,000,000 Life Cycles
- Works with the Schlage® L Series & Yale® 8700 Series **without** relocating mounting tabs.



# 4100



### Standards:

- 3-hour fire rated – UL10C, Fire Tests of Door Assemblies.
- Listed for UL1034 Burglary Resistant Electric Locking Mechanism, Grade 1
- 294 (6th Edition) Listed
- Tested to Grade 1: ANSI/BHMA A156.5
- UBC 7-2, Uniform Building Code.
- CAN4 S104, Standard Method for Fire Tests of Door Assemblies.
- NFPA 252 - Issue: 1999/01/01 Standard Methods of Fire Tests of Door Assemblies.
- USPT Patented #US20110241361

**NOTE:** Fire listing is always void when using fail safe action.



Intertek



Intertek

**Dimensions  
on page 61.**

**Everything  
included.**



**Premium  
stainless steel  
trim skirt**



**See the video!**

[trineonline.com/4100\\_electric\\_strike\\_video.php](http://trineonline.com/4100_electric_strike_video.php)



Use your phone camera!

**Need an  
Installation Tool?  
See page 54**

[www.trineonline.com](http://www.trineonline.com)



**BUILT IN AMERICA**  
**BASED IN AMERICA**  
**BUY AMERICAN**

**THE ONE BOX SOLUTION**  
**FOR CYLINDRICAL AND MORTISE LOCKS**



### Aesthetics Matter

The **Premium** stainless steel trim skirt cleans up the cut line.

Not worrying about a perfect cut on the face saves time and looks great. Since aesthetics matter, the premium trim skirt **ALWAYS** matches the finish on the faceplates and electric strike body.



Large gap left when replacing the competition.



The Trim Skirt fills in the gap.

Covers the gap to maintain the fire rating.

### Cutting Matters

1 - 3/8" Low profile backset provides ease of installation.

Why cut for a deadbolt 100% of the time when they are only used 5% of the time.



Faceplates, strike body, mounting screws, latch, and trim skirt all match the finish.

### Electric Characteristics

Voltage	Current/Amps	Ohms	Duty	Sound
12DC	0.310	39	Intm./Cont.	Silent
24DC	0.140	171	Intm./Cont.	Silent
12AC @ 60hz	0.280	39	Intm.	Buzz
16AC @ 60hz	0.380	39	Intm.	Buzz
24AC @ 60hz	0.550	39	Intm.	Buzz

### Power Matters

Low Current Draw  
.310 Amp at 12DC makes it very PoE Friendly

12 & 24DC :: 12 through 24AC  
All the low voltage flexibility you need.

No additional  
"pacs"  
required.



### Finishes:

### Price:

**4100-32D** (Satin Stainless Steel — BHMA630)

**\$610**

### The following finishes are:

**\$750**

- **4100-US4** (Satin Brass — BHMA606)
- **4100-US10** (Satin Bronze — BHMA612)

- **4100-US10B** (Dark Bronze — BHMA613E)

**\$725**

- **4100-BLK** (Black Powder Coat)

- **4100-32** (Polished Stainless Steel — BHMA629)

**\$799**

- **4100-US3** (Bright Brass — BHMA605)

For Fail-safe action (locks with power) add  
"RS" to the item number. **EX: 4100RS-32D**

**RS price  
same as  
above.**



# NIGHTLATCH FUNCTION DEADBOLT STRIKE for MORTISE LOCKS

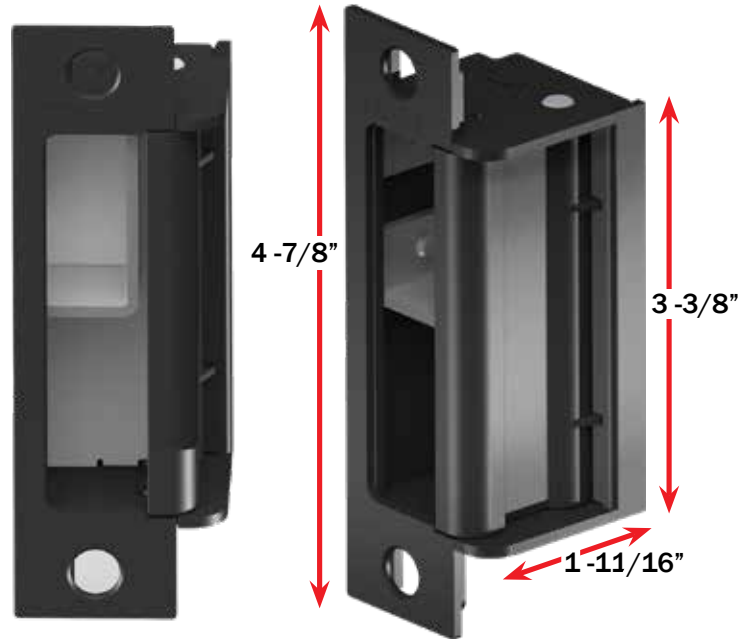


## 4100DB

### Key Features:

For use on mortise locks with deadbolts.  
Entry and night latch functionality included.

- Includes Four faceplates and nightlatch bracket.
- Use with mortise locks with dead bolts up to 1" projection.
- **Flexible:**
  - Four faceplates & trim skirt included
  - Removeable bracket included



**Premium Trimskirt,  
Four faceplates, and  
deadbolt bracket included**



### Standards:

- 3-hour fire rated – **UL10C**, Fire Tests of Door Assemblies.
- Listed for UL1034 Burglary Resistant Electric Locking Mechanism, Grade 1
- 294 (6th Edition) Listed
- Tested to Grade 1: ANSI/ BHMA A156.5
- **UBC 7-2**, Uniform Building Code.
- **CAN4 S104**, Standard Method for Fire Tests of Door Assemblies.
- **NFPA 252** - Issue: 1999/01/01 Standard Methods of Fire Tests of Door Assemblies.
- USPT Patented #US20110241361



**NOTE: Fire listing is always void when using fail safe action.**

### Electric Characteristics

Voltage	Current/Amps	Ohms	Duty	Sound
12DC	0.310	39	Intm./Cont.	Silent
24DC	0.140	171	Intm./Cont.	Silent
12AC @ 60hz	0.280	39	Intm.	Buzz
16AC @ 60hz	0.380	39	Intm.	Buzz
24AC @ 60hz	0.550	39	Intm.	Buzz

**No additional "pacs" required.**

### Finishes:

### Price:

**4100DB-32D** (Satin Stainless Steel – BHMA630) **\$618**

### The following finishes are:

• **4100DB-US4** (Satin Brass – BHMA606) **\$760**  
• **4100DB-US10** (Satin Bronze – BHMA612)

• **4100DB-US10B** (Dark Bronze – BHMA613E) **\$740**  
• **4100DB-BLK** (Black Powder Coat)

• **4100DB-32** (Polished Stainless Steel – BHMA629) **\$815**  
• **4100DB-US3** (Bright Brass – BHMA605)

For Fail-safe action (locks with power) add "RS" to the item number. **EX: 4100DBRS-32D** **RS price same as above.**



**BUILT IN AMERICA**  
**BASED IN AMERICA**  
**BUY AMERICAN**

## THE ONE BOX SOLUTION

FOR ALL CYLINDRICAL, MORTISE, & DEADBOLTS

# 4100CDBM



### Key Features:

All the features of the 4100DB

Includes Eight faceplates, premium trimskirt, & nightlatch bracket.

Entry and night latch functionality included.

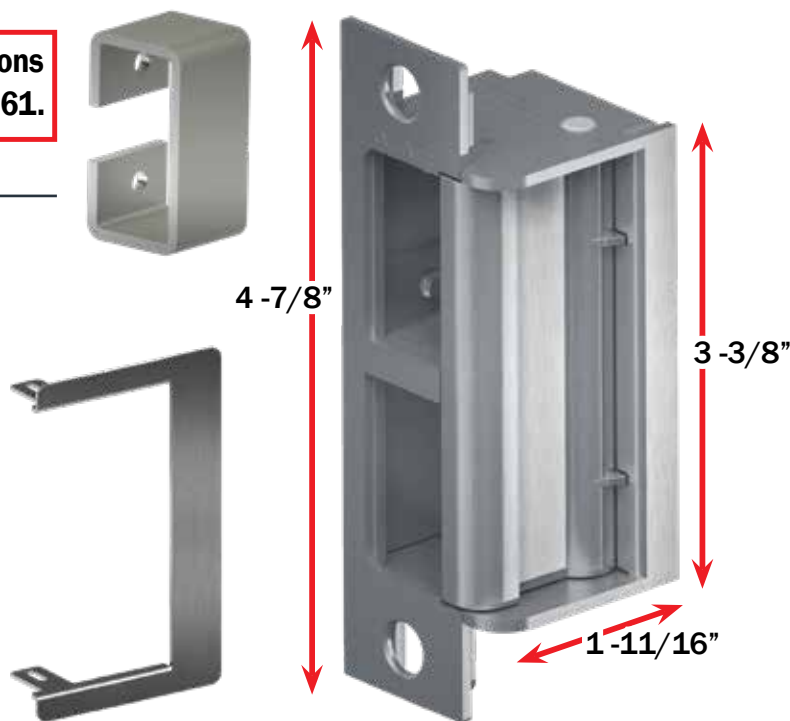
Dimensions  
on page 61.

*Always be prepared!*

### Standards:

- 3-hour fire rated – UL10C, Fire Tests of Door Assemblies.
- Listed for UL1034 Burglary Resistant Electric Locking Mechanism, Grade 1
- 294 (6th Edition) Listed
- Tested to Grade 1: ANSI/BHMA A156.5
- UBC 7-2, Uniform Building Code.
- CAN4 S104, Standard Method for Fire Tests of Door Assemblies.
- NFPA 252 - Issue: 1999/01/01 Standard Methods of Fire Tests of Door Assemblies.
- USPT Patented #US20110241361

**NOTE: Fire listing is always void when using fail safe action.**



### Electric Characteristics

Voltage	Current/Amps	Ohms	Duty	Sound
12DC	0.310	39	Intm./Cont.	Silent
24DC	0.140	171	Intm./Cont.	Silent
12AC @ 60hz	0.280	39	Intm.	Buzz
16AC @ 60hz	0.380	39	Intm.	Buzz
24AC @ 60hz	0.550	39	Intm.	Buzz

No additional “pacs” required.

### Finishes:

### Price:

**4100CDBM-32D** (Satin Stainless Steel – BHMA630)

**\$675**

#### The following finishes are:

• **4100CDBM-US4** (Satin Brass – BHMA606)

**\$850**

• **4100CDBM-US10** (Satin Bronze – BHMA612)

• **4100CDBM-US10B** (Dark Bronze – BHMA613E)

**\$825**

• **4100CDBM-BLK** (Black Powder Coat)

• **4100CDBM-32** (Polished Stainless Steel – BHMA629)

**\$955**

• **4100CDBM-US3** (Bright Brass – BHMA605)

For Fail-safe action (locks with power) add “RS” to the item number. EX: **4100CDBMRS-32D**

**RS price same as above.**

# 4100 Accessories

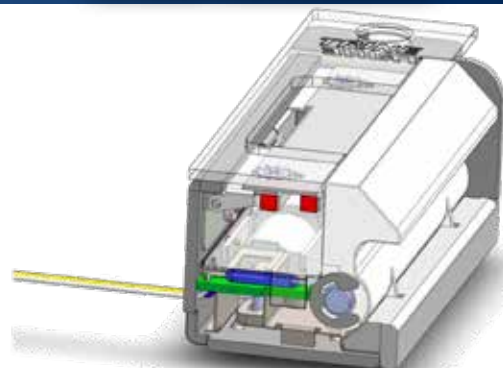


## LBSM Ad On

The Trine LBSM makes use of a sealed magnetic reed switch that is moisture and environmentally resistant with a life cycle count in excess of 2 million cycles.

The microswitches used by our competitors fail from moisture... ours do not!

Stop replacing strikes due to low cost microswitches and start using the only reliable **Latchbolt Monitoring Solution.**



**U.S. Patent No. 10,563,428**

**4100LBSM**  
Latchbolt & Strike Monitoring  
**Price:**  
add \$120 to the list price

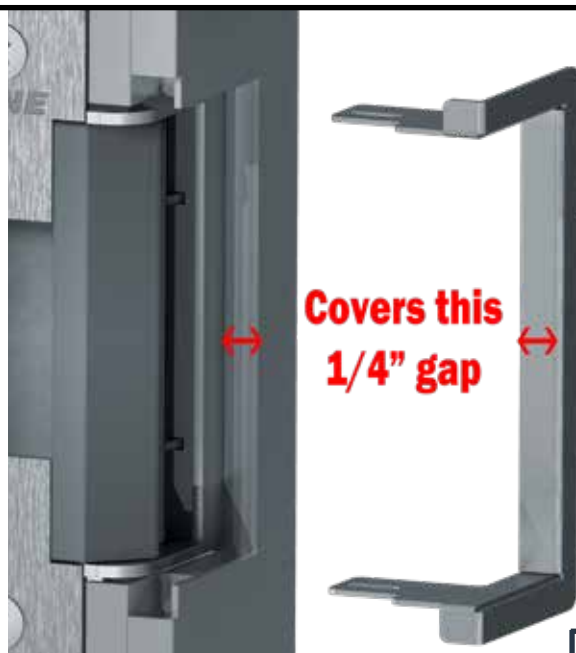
### Important:

For Latchbolt monitoring on the 4100DB and 4100DBDL  
**SEE PAGE 8**

### LBSM

#### CHARACTERISTICS:

CONTACT FORM:	C	CONTACT RESISTANCE STATIC:	150 MILLIOHM
CONTACT RATING:	10W	BREAKDOWN VOLTAGE:	200 VDC
SWITCHING VOLTAGE:	30V MAX	OPERATING TEMP:	-40° -130° C
	AC/DC	RATE:	2,000,000+ CYCLES
SWITCHING CURRENT:	0.5 A		



## 4100RX-250

- 1/4" stainless steel ramp extensions.
- Perfect for Timely®, Redi®, Raco® IDP® frames or similar.
- Extension acts like a trim skirt to hide the cut line pocket.

**For use with the 4100**  
(not with the 4100DB, 4100DBDL, or 4100CDBM)

### 41-4300-AK: Accessories Kit

- Mounting and latch screws
- 4100 & 4300 Latch shims
- Plug-in style wire connectors
- Sealed crimp connectors
- Torx Screws

**Price: \$43**

### Piezo Buzzers:

- **BZ-12:** Audible buzzer for 12DC power -- or --
- **BZ-24:** Audible buzzer for 24DC power

**DC VOLTAGE ONLY**

**Price: \$27**

### Additional Faceplates:

**Finish:**  
32D (Satin Stainless - BHMA630)

**The following finishes are:**  
32 (Polished Stainless - BHMA629)  
US3 (Bright Brass - BHMA605)

**The following finishes are:**  
US4 (Satin Brass - BHMA606)  
US10 (Satin Bronze - BHMA612)  
US10B (Dark Bronze - BHMA613E)

CC9: 9" x 1-1/4"	CRD8: 7-15/16" x 1-7/16"	CRD7: 6-7/8" x 1-1/4"	CCRD: 4-7/8" x 1-1/4"
<b>\$45</b>	<b>\$36</b>	<b>\$35</b>	<b>\$28</b>
<b>\$77</b>	<b>\$69</b>	<b>\$69</b>	<b>\$65</b>
<b>\$70</b>	<b>\$62</b>	<b>\$62</b>	<b>\$55</b>

**Prices for faceplates only**

### Finishes:

### Price:

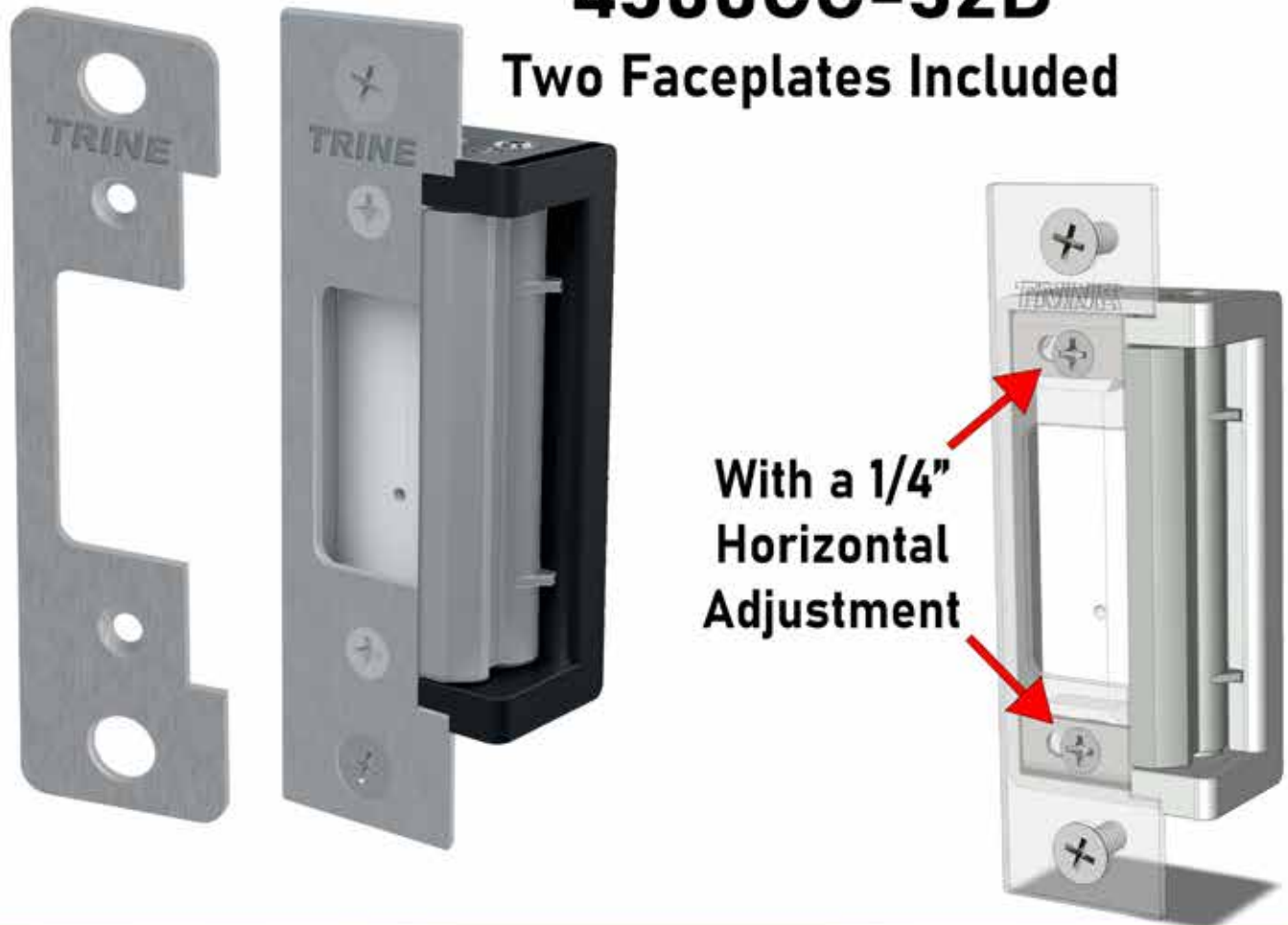
<b>4100RX-250-32D</b> (Satin Stainless Steel — BHMA630)	<b>\$83</b>
<b>US32</b> (Polished Stainless — BHMA629)	<b>\$120</b>
<b>US3</b> (Bright Brass — BHMA605)	
<b>US10B</b> (Dark Bronze Powder Coat — BHMA613E)	
<b>BLK</b> (Black Powder Coat) *new*	<b>\$115</b>

# THE ONE BOX SOLUTION

## FOR CYLINDRICAL AND DEADLATCHES

### 4300CC-32D

Two Faceplates Included



### 4300-32D

Four Faceplates Included



THE BEST  
**LOW CURRENT DRAW**  
MOST FLEXIBLE  
ELECTRIC STRIKE  
ON THE MARKET



## THE FLEXIBLE STRIKE

# The 4300



### Key Features:

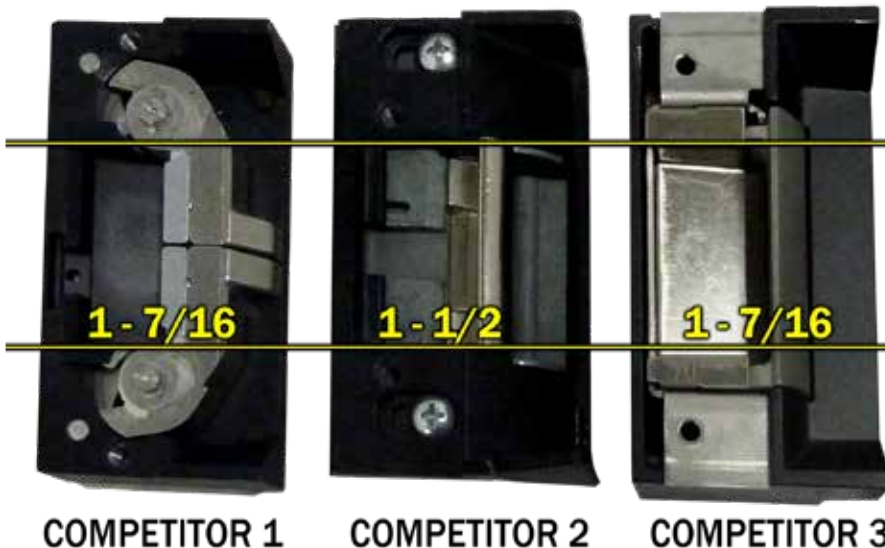
- The 4300 has a 1/4" adjustment for maximum flexibility.
- The 4300 **solves** problems auxiliary latch "pins" found on Adams Rite® locks.
- Tall Cavity **solves** door sag problems.
- 1 - 1/16" shallow backset **solves** frame depth problems.
- Up to four faceplates included
- 12 & 24DC, 12-24 AC
- Trim Skirt Included - color matched trimskirts **SOLVE** bad cuts.
- **Removable Fascia:** Change colors in the field to match your frame.

### Standards:

- Tested to Grade 1 - A156.31-2007
- ETL Listed for UL1034 Burglary Resistant Electric Locking Mechanism
- ETL Listed for UL294 (6th edition)



## FLEXIBLE CAVITY



**2.15" Cavity Height !!!**

With the improved 1/4" horizontal adjustment, the 4300 still has the tallest latch cavity in its class.



**BUILT IN AMERICA**  
**BASED IN AMERICA**  
**BUY AMERICAN**

**THE ONE BOX SOLUTION**  
**CYLINDRICAL AND DEADLATCHES**

## FLEXIBLE OPTIONS



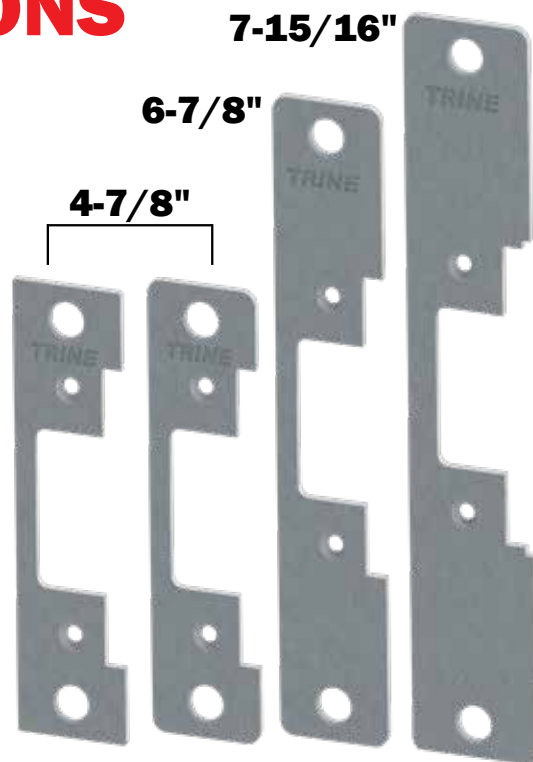
**1/4"**  
**horizontal**  
**adjustment**

- Easier to install
- More options in the field

**THE BEST**  
**SOLUTION FOR**  
**ALUMINUM**  
**FRAMES**

**FOUR**  
**FACEPLATES**  
**IN THE 4300**

**FOUR**  
**FINISHES**  
**AVAILABLE**



## FLEXIBLE POWER

### Electric Characteristics

Voltage	Current/Amps	Ohms	Duty	Sound
12DC	0.310	39	Intm./Cont.	Silent
24DC	0.140	171	Intm./Cont.	Silent
12AC @ 60hz	0.280	39	Intm.	Buzz
16AC @ 60hz	0.380	39	Intm.	Buzz
24AC @ 60hz	0.550	39	Intm.	Buzz

### Power Matters

Low Current Draw  
 .266 Amp at 12DC makes it  
 very PoE Friendly

12 & 24DC :: 12 through 24AC  
 All the low voltage flexibility  
 you need.



		Price:
<b>4300-32D:</b>	Stainless Steel Faceplates with Black	<b>\$259</b>
<b>4300-ALUM:</b>	Aluminum Faceplates & Fascia	<b>\$285</b>
<b>4300-BLK:</b>	Black Faceplates & Fascia	<b>\$285</b>
<b>4300-DKBZ:</b>	Dark Bronze Faceplates & Fascia	<b>\$285</b>

Add "RS" for Fail-safe model (ex: **4300RS-32D**)

### CK System

<b>CK-ALUM:</b>	Aluminum Fascia/Trimskirt
<b>CK-BLK:</b>	Black Fascia/Trimskirt
<b>CK-DKBZ:</b>	Dark Bronze Fascia/Trimskirt
	<b>Price: \$37</b>

**CK-PK:** This pack includes 2 Fascia &  
 Trimskirt finish (except black)

**Price: \$88**

# THE ONE BOX SOLUTION

## CYLINDRICAL AND DEADLATCHES



### Latchbolt Monitoring

- Patented Weather resistant switch system
- Lasts millions of cycles

THE COMPETITORS  
INFERIOR  
MICROSWITCHES  
(low life cycles/not  
water resistant)



Item Numbers: Price:

Add "LB" to  
model number  
example;  
4300LB-32D **\$95**

4300 electric strike  
dimensions on page 62.

### Trim Skirt Included in each 4300 box

Color matches the  
finish.



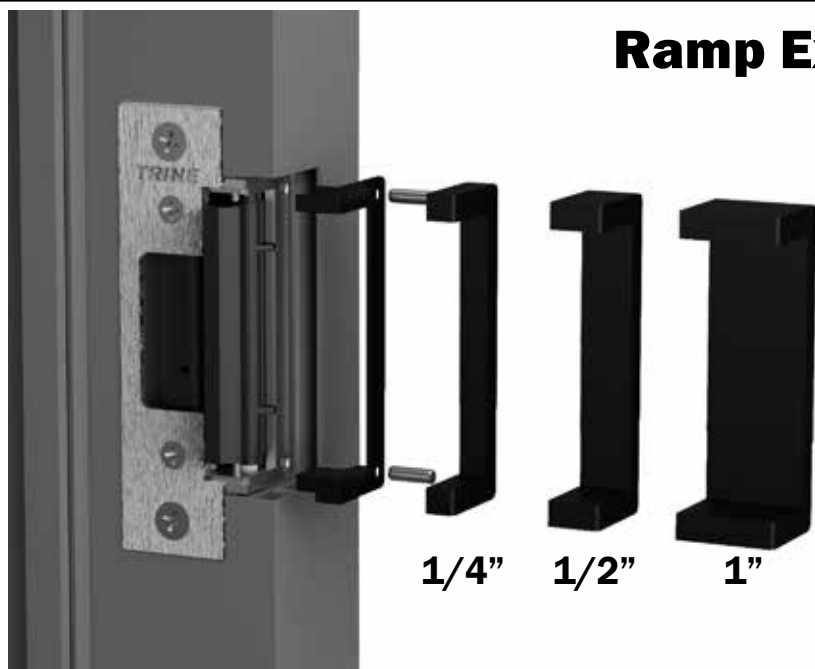
### 41-4300-AK: Accessories Kit

- Standard and Torx® screws
- 4100 & 4300 Latch shims
- Plug-in style wire connectors
- Sealed crimp connectors
- Torx Screws

**Price: \$45**

### Ramp Extensions

- 3 different sizes available  
1/4", 1/2", and 1"
- Order individual sizes.



Item Numbers: Price:

4300RX-25 \$60  
4300RX-50 \$65  
4300RX-100 \$70



**BUILT IN AMERICA**  
**BASED IN AMERICA**  
**BUY AMERICAN**

**THE ONE BOX SOLUTION**  
**CYLINDRICAL AND DEADLATCHES**

# 4300CC-32D

**BEST OPTION FOR THE 4300  
SERIES - TRY ONE TODAY**

## Key Features:

- Two 4-7/8" faceplates (as shown)
- Tall cavity solves door sag problems.  
Tallest latch in its class.
- All the features of the regular 4300 - for an even better price. (Does not contain the long faceplates.)

**1/4" Horizontal Adjustment**



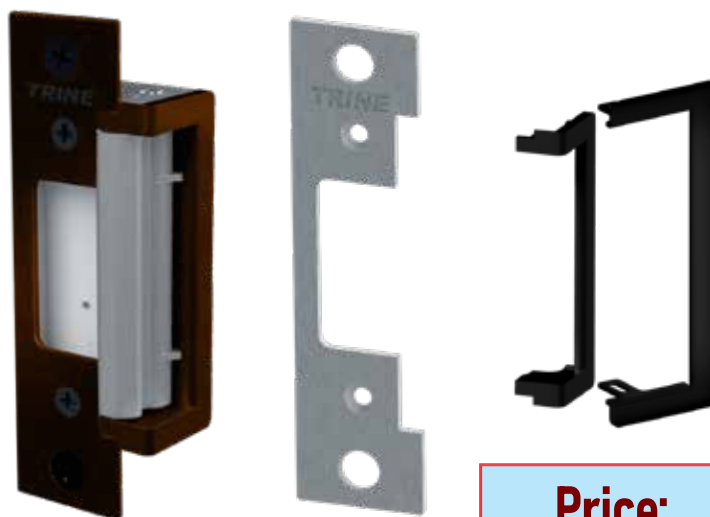
<b>4300CC-32D:</b>	Stainless Steel Faceplates with Black	<b>Price:</b>	<b>\$230</b>
<b>4300CC-ALUM:</b>	Aluminum Faceplates & Fascia		<b>\$250</b>
<b>4300CC-BLK:</b>	Black Faceplates & Fascia		<b>\$250</b>
<b>4300CC-DKBZ:</b>	Dark Bronze Faceplates & Fascia		<b>\$250</b>

Add "RS" for Fail-safe model (ex: 4300CCRS-32D)

# The 4300CC-DKBZ-32D

## Key Features:

- Two finish options in one box means you're ready for most frame types.
- Solves door sag problems. Tallest latch in its class.
- All the features of the 4300CC but with color options.



**ALL ITEMS SHOWN  
ARE INCLUDED**

**Price: \$255**  
4300CC-DKBZ-32D - OR -  
4300CC7-DKBZ-32D



# **THE ONE BOX SOLUTION**

## **FOR RIM PANIC EXIT DEVICES**

### **4800F**



### **4850**



**EVERYDAY LOW CURRENT DRAW**

**2 COMPETITOR  
STRIKES IN 1**

**FIRE RATED  
BUT PRICED WITHOUT IT**

**THE 1/2" SOLUTION**


**3 SPACERS INCLUDED  
6 THICKNESSES CREATED**



**BUILT IN AMERICA**  
**BASED IN AMERICA**  
**BUY AMERICAN**

**THE FIRE RATED**  
**3/4" RIM PANIC SOLUTION**

# 4800F

- For use with surface exit devices with up to 1" throw, in wood or metal door frames.
- Comes with Trine's Patented 4-Pin Anchoring System for **strength** and stability. (See page 40 for details)
- Cavity is completely open – which means the 4800 allows for an incremental depth up to a 1" throw – **Competitor back plates do not allow for this versatility.**
- Enhanced 12-24 DC Low Current Draw 
- Contains a one piece locking mechanism with one solenoid.  
**Less parts mean less problems.**
- Fail-safe/Fail-secure field selectable.  
*WH fire listing is void when using fail safe action.*

**Dimensions**  
on page 62.

## Standards:

- ANSI/BHMA A156.31, Grade 1
- CAL FIRE, 3776-1654:0502
- CAN/ULC-S104 Listed
- NFPA-252 Fire Door Compliant
- RoHS Compliant
- UL 1034 burglary-resistant listed and suitable for outdoor use
- UL 10C - Standard for Positive Pressure Fire Tests of Door Assemblies
- UL294 Listed



Electric Characteristics				**Enhanced**			
Current Draw				Connector			
Voltage:	(Amps)	Ohms:	Duty:	Wire Colors:	Used:	Sound:	
12DC	0.218	45	Intm/Cont	Red & Blue	12 DC	Silent	
16DC	0.290	45	Intm./Cont.	Red & Blue	12 DC	Silent	
24DC	0.195	92	Intm./Cont.	Brown & Blue	24 DC	Silent	

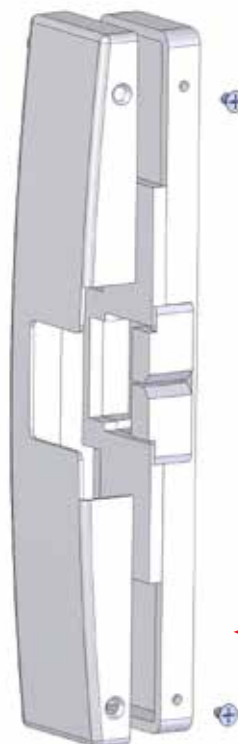
## Finishes:

## Price:

<b>4800F-32D</b> (Satin Stainless Steel – BHMA630)	<b>\$590</b>
<b>4800F-DKBZ</b> (Dark Bronze Powder Coated – BHMA613E)	
<b>4800F-BLK</b> (Black Powder Coated)	<b>\$646</b>
<b>4800F-US4</b> (Satin Brass – BHMA606)	
<b>4800F-US10</b> (Satin Bronze – BHMA612)	<b>\$700</b>
<b>4800F-32</b> (Polished Stainless Steel – BHMA629)	
<b>4800F-US3</b> (Bright Brass – BHMA605)	<b>\$710</b>



See Page 39-40 for options, page 54 for installation tool.



**Solid cast housing!**  
**Not** cost saving covers like the competition.

# THE ONE BOX SOLUTION

## FOR RIM PANIC EXIT DEVICES



### Lowest Current Draw available!



- Cavity is completely open – which means the 4850 allows for an incremental depth up to a 1" throw - **Competitor back plates do not allow for this versatility.**
- For use with surface mounted rim exit devices with up to a 1" throw.
- Comes with Trine's **Patented 6-Pin Anchoring System** for strength and stability. (See page 40 for details)
- Contains a one piece locking mechanism with one solenoid – **less parts mean less problems.**
- Fail-safe/Fail-secure field selectable.

#### Standards:

- ANSI/BHMA A156.31, Grade 1
- CAL FIRE, 3776-1654:0502
- CAN/ULC-S104 Listed
- NFPA-252 Fire Door Compliant
- RoHS Compliant
- UL 1034 burglary-resistant listed and suitable for outdoor use
- UL 10C - Standard for Positive Pressure Fire Tests of Door Assemblies
- UL294 Listed



#### Finishes:

#### Price:

<b>4850-32D</b> (Satin Stainless Steel – BHMA630)	<b>\$590</b>
<b>4850-DKBZ</b> (Dark Bronze Powder Coated -- BHMA613E)	
<b>4850-BLK</b> (Black Powder Coated)	<b>\$646</b>
<b>4850-US4</b> (Satin Brass – BHMA606)	
<b>4850-US10</b> (Satin Bronze – BHMA612)	<b>\$700</b>
<b>4850-32</b> (Polished Stainless Steel – BHMA629)	
<b>4850-US3</b> (Bright Brass – BHMA605)	<b>\$710</b>

**Need an Installation Tool?**  
**See page 54**

See Page 39-40 for options.

**3 Spacers included,  
6 Thicknesses created,  
1 Box Solution Provided.**

#### Electric Characteristics

Current Draw				Connector		
Voltage:	(Amps)	Ohms:	Duty:	Wire Colors:	Used:	Sound:
12DC	0.218	45	Intm./Cont	Red & Blue	12 DC	Silent
16DC	0.290	45	Intm./Cont.	Red & Blue	12 DC	Silent
24DC	0.195	92	Intm./Cont.	Brown & Blue	24 DC	Silent

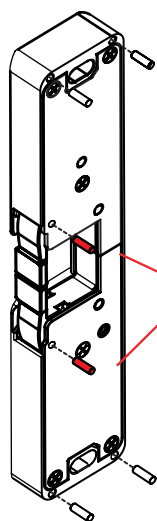


**BUILT IN AMERICA  
BASED IN AMERICA  
BUY AMERICAN**

## **THE 'BOLT' STRIKE SOLUTION & THE LATCHBOLT MONITORING SOLUTION**

### **4801 - "Bolt" Strike**

- For use with the Yale Squarebolt® or Corbin Russwin Securebolt™
  - Use with surface mounted rim device up to 1" throw.
  - Cavity Opening -  
Height: 1 17/32"  
Width: 1 5/32"
  - 6-Pin Anchor system provided to handle the toughest installations.
- 
- Same standards as 4850.
  - Same electrical characteristics as 4800F.



**\*Must Install  
2 middle  
pins on the  
4801/4801LB**



### **Active Latchbolt Monitoring (LB Option)**



- IR optical sensor
- Single pole, double throw, form "C" Relay, rated at 1-amp at 12-24 AC-DC
- N/O and N/C relay contacts
- Module power source 12-24 DC
- Current consumption is:  
12v: standby 12.7ma  
activate 22.8ma  
24v: standby 19.4ma  
activate 34.4ma
- All other features are the same as the base model.

#### **Finishes:**

#### **Price:**

**4801-32D** (Satin Stainless Steel — BHMA630) **\$665**

**4801-DKBZ** (Dark Bronze Powder Coated — BHMA613E)

**4801-BLK** (Black Powder Coated) **\$675**

**4801-US4** (Satin Brass — BHMA606)

**4801-US10** (Satin Bronze — BHMA612) **\$750**

**4801-32** (Polished Stainless Steel — BHMA629)

**4801-US3** (Bright Brass — BHMA605) **\$775**

Add "LB" to any 4800 series electric strike

#### **Price:**

**add \$119.00**

Example:

**- 4800FLB-32D**

**to the price of  
the base unit.**

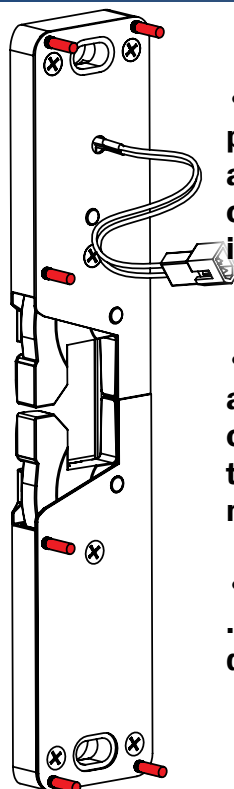


# 4800 SERIES ACCESSORIES & PATENTED ANCHORING PIN SYSTEM



## PATENTED ANCHORING SYSTEM

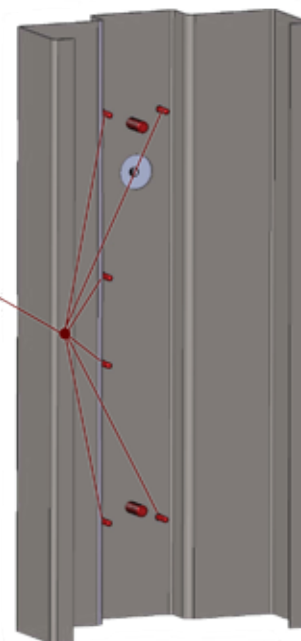
- 4 or 6 Pin system included in every 4800 series strike.
- Prevents strike from shifting on the frame for the most secure installation.
- Two center pins on 4850 suggested for installs in high traffic locations.



• The Anchor System provides up to six additional points of contact for the toughest installations.

• The 4850 can have a total 8 points of connection between the frame and strike for maximum strength.

• Anchoring pins are .128" diameter. A #30 drill bit is recommended.



Need an Installation Tool?

See page 54

**\*\*THE CONFIGURATION IS YOUR CHOICE\*\***

## 4800 Series Accessories

### MWH-5

#### REMOVABLE MULLION WIRE HARNESS FOR 4800 SERIES ELECTRIC STRIKES

Contains:

- (1) 5' Wire for mullion with male/female connectors.
- (1) Male connector & (1) Female connector.
- (1) Mullion cap, & (1) Wire adhesive.
- (4) Wire caps
- (1) Wire tie

**Price:**

**\$78**

### 4850-AK: ACCESSORIES KIT

Contains:

- (1) Fail safe plunger with spring & (1) Fail safe cam.
- (6) Anchoring pins.
- (1) Wire connector
- (2) 1/4-20 x 1" UH Cap socket mounting screws
- (2) Wire caps

**\$38**

### 4800-AK: ACCESSORIES KIT

Contains:

- (1) Fail safe plunger with spring
- (4) Anchoring pins.
- (1) Wire connector
- (2) 1/4-20 x 1" UH Cap socket mounting screws
- (2) Wire caps

**\$38**

### 4800-SS: TWO 1/16" SPACER PLATES IN 32D

**\$39**

### 4800-SS-DKBZ: TWO 1/16" SPACER IN DARK BRONZE 613E

**\$49**

Fits all 4800 Series Electric Strikes

### 4850-SS: 1/4" SPACER PLATE IN 32D

**\$57**

### 4850-SS-DKBZ: 1/4" SPACER IN DARK BRONZE 613E

**\$61**

Fits all 4800 Series Electric Strikes

# THE ONE BOX SOLUTION

## FOR ALL GATE AND OUTDOOR INSTALLATIONS



- FIRE RATED
- BURGLARY RATED
- OUTDOOR RATED
- 294 RATED




# EN400CMRP

**THE GATE "KIT"  
FOR ELECTRIC STRIKES**

**THE ONLY ELECTRIC STRIKE THAT CAN CHANGE LATCHES  
TO WORK WITH CYLINDRICAL, MORTISE, AND RIM PANICS**

- Contains **ONLY** eight total parts.
- Only **1** moving part in the locking mechanism.
- All stainless steel construction.




- ✦ **Superior Strength** - 1,500+ lbs factory tested.
- ✦ **Superior Life** - 1,000,000+ cycles.
- ✦ **Superior Application** -  Outdoor rating allows the strike to be used where the competition can not.

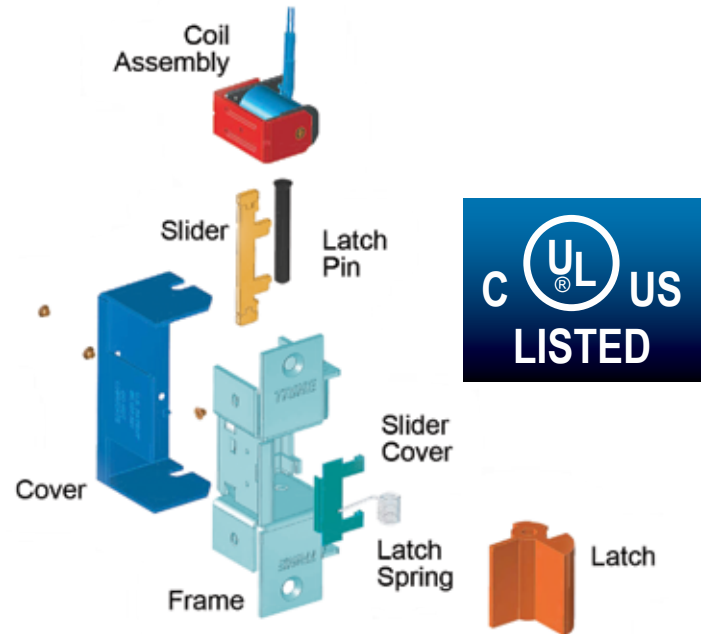
### Key Features

- Continuous Duty runs very cool (DC only)  
No extra Smart Pacs® needed
- Durability of 1,000,000+ life cycles
- Factory tested to 1,500+ lbs
- **Fail-secure/Fail-safe is field reversible on DC units**
- Left and Right handing is field reversible
- Low Current Draw (DC Models\*)  
Voltage & Amp draw is the same across all EN Models



### Standards

-  Listed 10C - Fire-rated  
- Class A, 3-hour, single swing door  
(except on 400RP, 800 & 850 models)
-  UL 1034 burglary-resistant  
listed and suitable for outdoor use
-  UL 294 (6th Edition) listed
- Tested to Grade 1 - A156.31-2007
- NYC MEA 79-01-E



### HOW TO ORDER

Please provide the following information to ensure you receive the CORRECT electric strike.

	Model #	—	Voltage	—	Finish	—	Handing
example:	400		12DC		32D		RH
example:	800		24AC		10B		LH

\*Fail Safe Request: Please add "RS" to item#  
example: 400RS-12DC-32D-RH

**Add \$15 to list price of base model.**

### Electric Characteristics

Voltage	Amps	Ohms	Duty	Sound
12AC	0.70	4.5	Intm.	Buzz
24AC	0.37	18.0	Intm.	Buzz
12DC	0.28	43.0	Intm./Cont.	Silent
24DC	0.15	164.0	Intm./Cont.	Silent

### Wire Lead Color Codes

Voltage Wire Colors

12AC - Blue & Orange/White || 24AC - Blue & Black/White  
12DC - 2 - Orange/White || 24DC - 2 - Black/White

**Need an Installation Tool?**  
**See page 54**



**BUILT IN AMERICA**  
**BASED IN AMERICA**  
**BUY AMERICAN**

## THE OUTDOOR SOLUTION

CYLINDRICAL, MORTISE, & RIM PANIC EXIT DEVICES

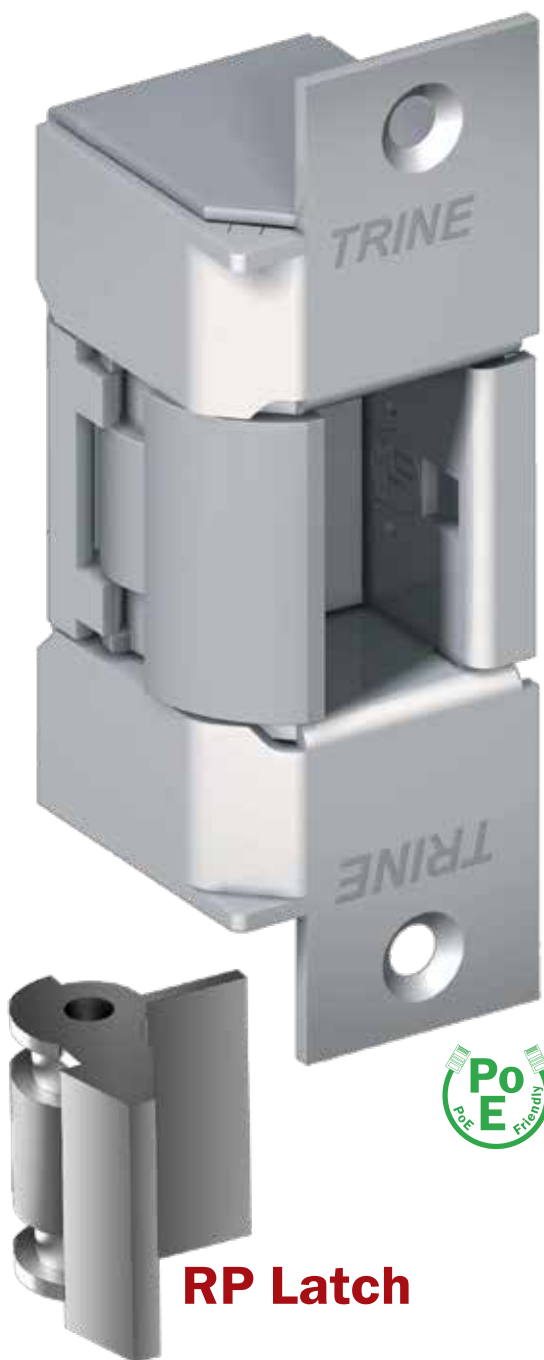
# EN400CMRP

**THE ONLY ELECTRIC STRIKE SOLUTION  
ON THE MARKET THAT CAN HANDLE**

**CYLINDRICAL, MORTISE,  
DEADLATCHES, AND RIM PANICS**

**The Flexible 400CMRP Includes:**

- A complete strike in the box (see price section below).
- An additional strike latch that allows for use with mortise, cylindrical locks, and rim panic devices.
- The **EN400-Gatebox** - mount the strike anywhere.
- The **EN-24DC-CA** - change the voltage from 12 to 24DC
- Fail safe/Fail secure field reversible.
- Always Low Current Draw



**RP Latch**

### EN400-Gatebox

Install the EN400CMRP  
anywhere on the frame or post.

*\*Steel gatebox  
is unfinished\**



Aluminum  
gatebox  
available (see pg 47)

#### Finishes:

**400CMRP-32D** (Satin Stainless Steel — BHMA630)

**400RPCM-32D** (Satin Stainless Steel — BHMA630)

**400CMRP-BLK** (Black Powder Coated)

**400RPCM-BLK** (Black Powder Coated)

#### Price:

**\$647**

**\$693**

Kits cannot be ordered with latchbolt (LB) monitoring. Order from page 44-46 with a gatebox to match. **CMRP** comes as 400-12DC-32D-RH; **RP** (rim panic) latch with 24DC coil are in the box. **RPCM** comes as 400RP-24DC-32D-RH; **CM** (cylindrical/mortise) latch and 12DC coil are in the box.



### EN400



- Use with cylindrical and mortise Locks.
- Perfect for exterior doors and gates.
- Latch Shim Kit provided for horizontal cavity adjustment.
- Field reversible handing.  
Order a specific hand to save time.

**Refer to  
pg 42 for  
"How to Order"**

#### Finishes: Price:

**400-32D** (Satin Stainless Steel — BHMA630) **\$489**

**400-BLK** (Black Powder Coat) **\$535**

**400-US10B** (Dark Bronze Powder Coat -- BHMA613E)

**400-US3** (Bright Brass — BHMA605)

**400-US4** (Satin Brass — BHMA606)

**400-US10** (Satin Bronze — BHMA612)

**400-32** (Polished Stainless — BHMA629)

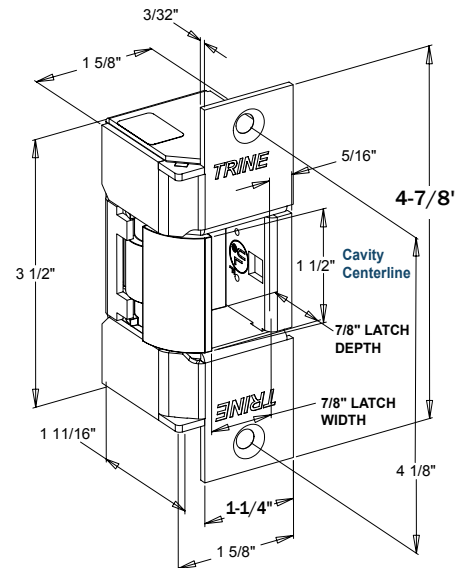
**\$555**

**EN400-Gatebox**  
(Steel Gatebox,  
\*unfinished\*)

**\$67**

**EN400-Gatebox-AL**  
(Aluminum Gatebox)

**\$120**



### EN400RP



(Not UL 10C listed)

- Use with rim panic devices
- Perfect for exterior doors and gates.
- Field reversible handing.  
Order a specific hand to save time.
- The Outdoor Rim Panic Solution

#### Finishes: Price:

**400RP-32D** (Satin Stainless Steel — BHMA630) **\$489**

**400RP-BLK** (Black Powder Coat) **\$535**

**400RP-US10B** (Dark Bronze Powder Coat -- BHMA613E)

**400RP-US3** (Bright Brass — BHMA605)

**400RP-US4** (Satin Brass — BHMA606)

**400RP-US10** (Satin Bronze — BHMA612)

**400RP-32** (Polished Stainless — BHMA629)

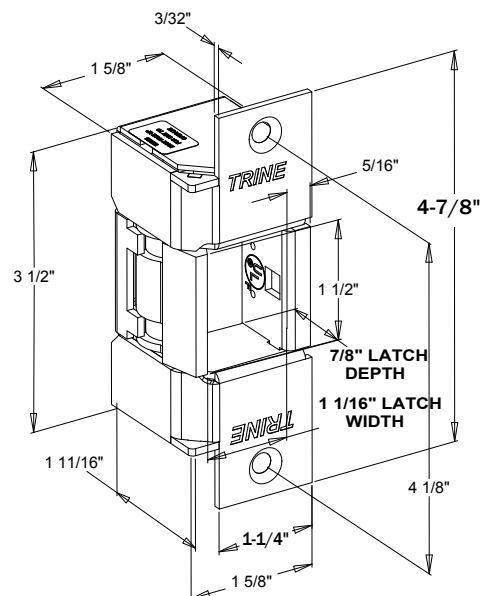
**\$555**

**EN400-Gatebox**  
(Steel Gatebox,  
\*unfinished\*)

**\$67**

**EN400-Gatebox-AL**  
(Aluminum Gatebox)

**\$120**



**Refer to  
pg 42 for  
"How to Order"**



**BUILT IN AMERICA  
BASED IN AMERICA  
BUY AMERICAN**

**OUTDOOR ELECTRIC STRIKE SOLUTIONS**

**EN SERIES**

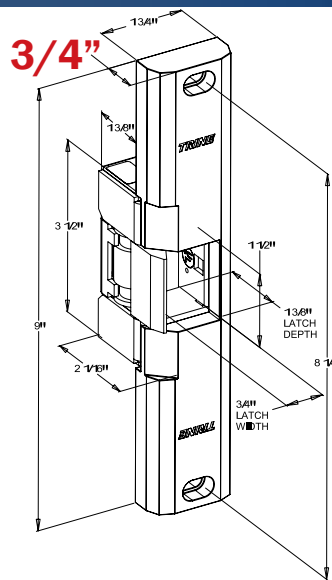


### EN800 — GREAT FOR OUTDOOR GATES

For new or replacement installations in wood or metal single door jambs. Use with surface mounted rim exit devices with up to 1" throw. **3/4" thick face plate.**

(Not UL 10C Listed)

Works with Rim Panic Exit Devices



#### Finishes: Price:

**800-32D** **\$590**  
(Satin Stainless Steel — BHMA630)

The following finishes are:

- **800-US3** **\$652**  
(Bright Brass — BHMA605)
- **800-US4**  
(Satin Brass — BHMA606)
- **800-US10**  
(Satin Bronze — BHMA612)
- **800-US10B**  
(Dark Bronze Powder Coat — BHMA613E)
- **800-32**  
(Polished Stainless — BHMA629)

**Refer to  
pg 42 for  
"How to Order"**

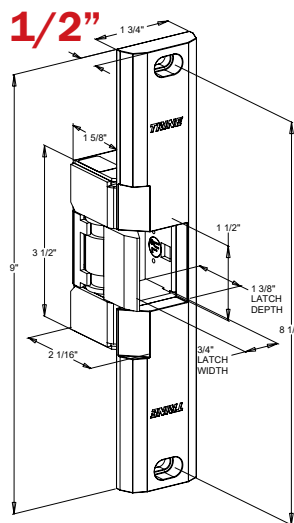


### EN850 — GREAT FOR OUTDOOR GATES

For new or replacement installations in wood or metal single door jambs. Use with surface mounted rim exit devices with up to 1" throw. **1/2" thick face plate.**

(Not UL 10C Listed)

Works with Rim Panic Exit Devices.



#### Finishes: Price:

**850-32D** **\$610**  
(Satin Stainless Steel — BHMA630)

The following finishes are:

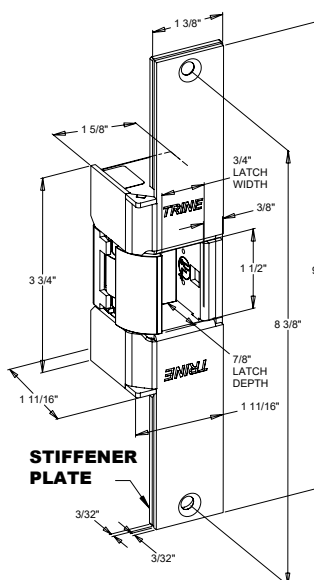
- **850-US3** **\$687**  
(Bright Brass — BHMA605)
- **850-US4**  
(Satin Brass — BHMA606)
- **850-US10**  
(Satin Bronze — BHMA612)
- **850-US10B**  
(Dark Bronze Powder Coat — BHMA613E)
- **850-32**  
(Polished Stainless — BHMA629)



### EN950 — FITS FOLGER ADAM® 310-2 CUTOUT

For new or replacement installations in metal or wood jambs. Use with mortise exit devices, mortise locks without dead bolts and cylindrical locksets with up to 7/8" throw. Based on 1/8" door gap.

Latch Shim Kit provided for horizontal cavity adjustment.



#### Finishes: Price:

**950-32D** **\$599**  
(Satin Stainless Steel — BHMA630)

The following finishes are:

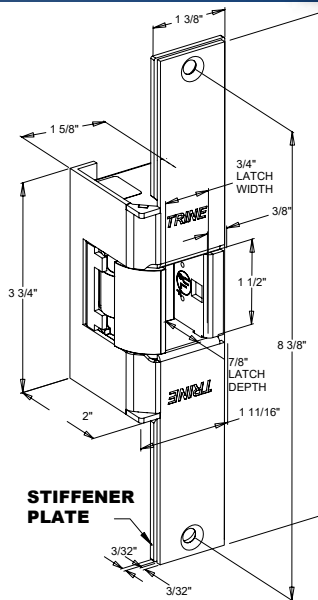
- **950-US3** **\$672**  
(Bright Brass — BHMA605)
- **950-US4**  
(Satin Brass — BHMA606)
- **950-US10**  
(Satin Bronze — BHMA612)
- **950-US10B**  
(Dark Bronze Powder Coat — BHMA613E)
- **950-32**  
(Polished Stainless — BHMA629)



### EN960 — FITS FOLGER ADAM® 310-2 3/4" CUTOUT

For new or replacement installations in metal or wood jambs. Use with mortise exit devices, mortise locks without dead bolts and cylindrical locksets with up to 7/8" throw. Based on 1/8" door gap.

Latch Shim Kit provided for horizontal cavity adjustment.



#### Finishes: Price:

**960-32D** **\$660**

(Satin Stainless Steel — BHMA630)

The following finishes are:

**• 960-US3** **\$725**

(Bright Brass — BHMA605)

**• 960-US4**

(Satin Brass — BHMA606)

**• 960-US10**

(Satin Bronze — BHMA612)

**• 960-US10B**

(Dark Bronze Powder Coat — BHMA613E)

**• 960-32**

(Polished Stainless — BHMA629)

## TOUGH-AS-NAILS-GO-ANYWHERE-EN-SERIES

Patented outdoor rated latchbolt strike mechanism monitoring.

### The LBSM for the 400, 400RP, 950, 960

- Latchbolt monitoring utilizes a sealed magnetic reed switch and monitors if the lockset latch is engaged with the strike.
- Strike mechanism monitoring detects whether the strike is in the locked or unlocked position

#### LBM CHARACTERISTICS:

CONTACT FORM:	C
CONTACT RATING:	10W
SWITCHING VOLTAGE:	30V max AC/DC
SWITCHING CURRENT:	0.5 amps
CONTACT RESISTANCE	
STATIC:	150 milliohms (mΩ)
BREAKDOWN VOLTAGE:	200 VDC
OPERATING TEMP:	-40° - 130° C
RATE:	2,000,000+ cycles

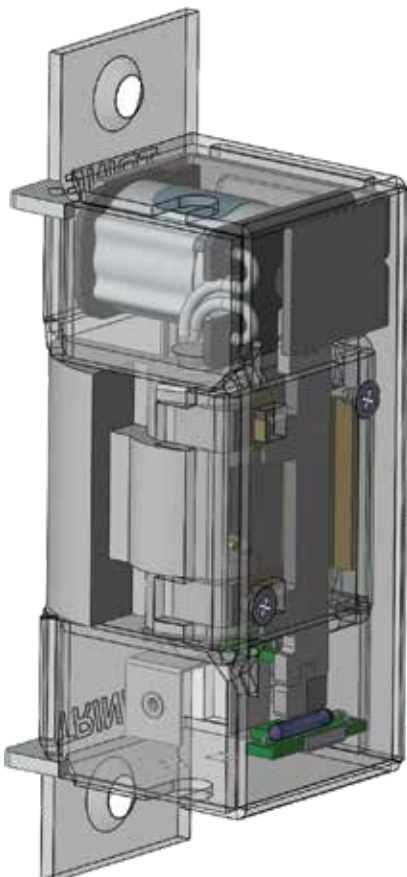
#### Price:

Add "LBSM" to model 400, 400RP, 950, or 960

Example: **400LBSM-12DC-32D**

**add \$119**  
to the price of the base unit.

\*Cannot add to 400CMRP/RPCM kits\*





USE WITH A  
GATEBOX FOR  
ADDED FLEXIBILITY

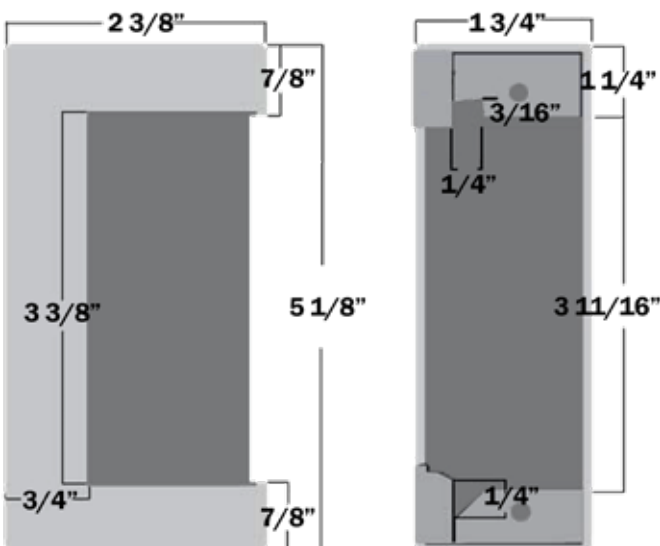


**BUILT IN AMERICA**  
**BASED IN AMERICA**  
**BUY AMERICAN**

# EN SERIES ACCESSORIES

MODEL	DESCRIPTION	Price:
LC-200 	External unit that operates on 12 through 24 DC input and provides inductive kickback and surge protection. When used with the EN Series, 12DC must be selected and the LC200 must be located within 15' of the electric strike.	\$76
EN-CA-12DC	Coil Assembly (Orange/White Wire Leads)	\$56
EN-CA-24DC	Coil Assembly (Black/White Wire Leads)	\$56
EN-CA-12AC	Coil Assembly (Blue/Orange & White Wire Leads)	\$56
EN-CA-24AC	Coil Assembly (Blue/Black & White Wire Leads)	\$56
TRS	(2) Tamper-Resistant Torx® #12-24 Screws	\$12
EN-TS	Trim Skirt (Not for use with 950 & 960)	\$34
EN-LSK	EN Latch Shim Kit for horizontal cavity adjustment.	\$22
ESK-1	EN Service Kit: <ul style="list-style-type: none"> <li>• (1) Latch spring</li> <li>• (2) PFH 12-24x1" mounting screws &amp; (2) PFH 6-32 x 1/8" cover screws</li> <li>• (2) Wire nut caps &amp; (1) assembly pin and instruction sheet</li> </ul>	\$23
BZ-12 	Buzzer for 12 DC operation	\$27
BZ-24	Buzzer for 24 DC operation	\$27
EN400-Gatebox	The weldable gate box solution for use with the EN400 & EN400RP Outdoor rated electric strikes. (Steel gatebox is <i>*Not Finished*</i> ).	\$67
EN400-Gatebox-AL	The aluminum gate box solution for use with the EN400 & 400RP.	\$120

**EN400-Gatebox &  
EN400-Gatebox-AL  
Dimensions**





# Light Commercial Electric Strikes



***00 Legacy Line***

also

***Made in America***

# Light Commercial Electric Strikes

## 00 Series

### FEATURES

- Durability - 500,000 Life Cycles
- Holding Force - 1000 lbs
- Only 1 Moving Part Locking Mechanism
- Non-Handed Operation
- Heavy Duty Latch Spring
- Fail Secure Standard (Unlocks with Power)

<u>Voltage</u>	<u>Amps</u>	<u>Ohms</u>	<u>Sound</u>	<u>Duty</u>	<u>Wire Color</u>
8-16VAC/4-6VDC	1.3-2.7	1.4	Buzz	Intermittent	Blck
12VDC	0.40	30.0	Silent	Continuous	Red/Wht
24VAC	1.40	4.7	Buzz	Intermittent	Red
24VDC	0.19	125.0	Silent	Continuous	Blck/Wht



### 001

For use in new or replacement installations in wood and metal jambs. For use with locksets having up to 5/8" throw, based on 1/8" door gap.

**Face Plate** 5-7/8" x 1-1/4" — **Mortise Backset** 1-9/16" — **Cavity Depth** 1/2" — **Cavity Width** 9/16" — **Cavity Height** 1-1/2"

#### Price:

**001**  
(Brass Powder Coated) **\$67**

**001C**  
(Satin Chrome — BHMA651) **\$75**

**RS** (Fail Safe)  
- For DC Models only. **add \$20**



### 002

For use in new or replacement installations in wood and metal jambs. Auxiliary lever ramps for use with locksets which contain dead locking levers. Use with locksets having up to 5/8" throw, based on 1/8" door gap.

**Face Plate** 7-15/16" x 1-7/16" — **Auxiliary Ramp** 2-7/8" — **Mortise Backset** 1-9/16" — **Cavity Depth** 1/2" — **Cavity Width** 9/16" — **Cavity Height** 1-1/2"

#### Price:

**002**  
(Aluminum Powder Coated) **\$106**

**002DB**  
(Dark Bronze Powder Coated) **\$111**

**RS** (Fail Safe)  
- For DC Models only. **add \$20**



### 004

For new or replacement installations in wood jambs. Use with locksets with individual dead bolts. **Dead bolts cannot be released electrically.** Use with locksets having up to 5/8" throw, based on 1/8" door gap.

**Face Plate** 6-1/4" x 1-3/8" — **Dead bolt Knockouts** Top & Bottom 1-11/16" x 9/16" — **Mortise Backset** 2-3/4" — **Cavity Depth** 1/2" — **Cavity Width** 9/16" — **Cavity Height** 1-1/2"

#### Price:

**004**  
(Brass Powder Coated) **\$122**

**004C**  
(Satin Chrome — BHMA651) **\$130**

**004DB**  
(Dark Bronze Powder Coated) **\$129**

**RS** (Fail Safe)  
- For DC Models only. **add \$20**

# 00 Series



## 005

For use in replacement installations in wood jambs and iron gates. Use with bored cylindrical locksets having up to 5/8" throw, based on 1/8" door gap.

**Face Plate** 3-1/2" x 1-3/8" — **Mortise Backset** 2-3/4" — **Cavity Depth** 1/2" — **Cavity Width** 9/16" — **Cavity Height** 1-1/2"

*Need to upgrade to something stronger?*  
- Try the HD005 (below)

### Price:

**005**  
(Brass Powder Coated) **\$81**

**005C**  
(Satin Chrome — BHMA651) **\$89**

**RS** (Fail Safe)  
- For DC Models only. **add \$20**



## HD005

Screwed-on Faceplate and reinforced Latch Pin provide additional strength for **HEAVY DUTY** installations. For use in replacement installations in wood jambs and iron gates. Use with bored cylindrical locksets having up to 5/8" throw, based on 1/8" door gap.

**Face Plate** 3-1/2" x 1-3/8" — **Mortise Backset** 2-3/4" — **Cavity Depth** 1/2" — **Cavity Width** 9/16" — **Cavity Height** 1-1/2"

### Price:

**HD005**  
(Brass Powder Coated) **\$107**

**HD005C**  
(Satin Chrome — BHMA651) **\$115**

**RS** (Fail Safe)  
- For DC Models only. **add \$20**



## S005

For use in replacement installations in wood jambs and iron gates. Use with bored cylindrical locksets having up to 3/4" throw, based on 1/8" door gap.

**Face Plate** 3-1/2" x 1-3/8" — **Mortise Backset** 2-7/8" — **Cavity Depth** 5/8" — **Cavity Width** 23/32" — **Cavity Height** 1-1/2"

### Price:

**S005**  
(Brass Powder Coated) **\$95**

**S005C**  
(Satin Chrome — BHMA651) **\$103**

**RS** (Fail Safe)  
- For DC Models only. **add \$20**



## 006

For surface mount installations on metal or wood jambs, for in swinging applications. Use with locksets or night latches having up to 5/8" throw, based on 1/8" door gap. When mounted on a pair of doors, strike is mounted to the inactive leaf.

**Case** 2-1/8" x 1-3/16" — **Surface Mounted** — **Die Cast Housing** — **Cavity Depth** 1/2" — **Cavity Width** 1/2" — **Cavity Height** 1-3/8"

### Price:

**006**  
(Brass Powder Coated) **\$132**

**RS** (Fail Safe)  
- For DC Models only. **add \$20**



## 007

For use in new or replacement installations in wood jambs. Use with locksets having up to 3/4" throw, based on 1/8" door gap.

**Face Plate** 4-7/8" x 1-1/4" — **Mortise Backset** 2-7/8" — **Cavity Depth** 5/8" — **Cavity Width** 3/4" — **Cavity Height** 1-1/2"

### Price:

**007**  
(Brass Powder Coated) **\$126**

**007C**  
(Satin Chrome — BHMA651) **\$134**

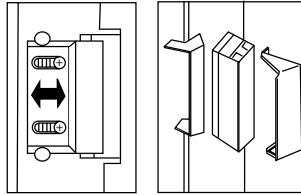
**RS** (Fail Safe)  
- For DC Models only. **add \$20**

# Light Commercial Electric Strikes

# The Adjustable 2000 Series

## FEATURES

- Allows adjustment for wider latch bolts & poorly aligned doors & locksets
- **1/8" Horizontal Latch Adjustment**
- Releases Under Slight Door Preload
- Life Cycles - 500,000
- **Holding Force - 900 lbs**
- Solid Cast Latch - Chrome Plated
- Non-Handed Operation



Voltage	Current/Amps	Ohms	Sound	Duty
6-14VAC	0.44 - 1.10	8.5	Buzz	Intrmt.
6-14VDC	0.70 - 1.60	8.5	Silent	Intrmt.
16-24VAC	0.22 - 0.33	50.0	Buzz	Intrmt.
16-24VDC	0.32 - 0.47	50.0	Silent	Intrmt.
12VDC	0.200	60.0	Silent	Cont.
24VDC	0.12	120.0	Silent	Cont.



## 2001

For use in new or replacement wood or metal jamb installations with locksets having up to 5/8" throw, based on 1/8" door gap.

**Face Plate** 5-7/8" x 1-1/4" — Narrow Style Face Plate — Mortise Backset 1-9/16" — Cavity Depth 9/16" — Cavity Width 5/8" — Cavity Height 1-11/16"

**NOT AVAILABLE IN FAIL-SAFE FUNCTION. SEE 001 ON PAGE 49**

### Price:

<b>2001</b> (Brass Powder Coated)	<b>\$119</b>
<b>2001C</b> (Satin Chrome — BHMA651)	<b>\$125</b>



## 2002

For use in new or replacement, aluminum or hollow, metal jamb installations. Auxiliary lever ramps for use with locksets containing dead-locking levers. Use with latch bolts having up to 5/8" throw, based on 1/8" door gap.

**Face Plate** 7-15/16" x 1-7/16" — Auxiliary Ramp Height 2-7/8" — Mortise Backset 1-9/16" — Cavity Depth 9/16" — Cavity Width 5/8" — Cavity Height 1-11/16"

### Price:

<b>2002</b> (Aluminum Powder Coated)	<b>\$138</b>
<b>2002DB</b> (Dark Bronze Powder Coated)	<b>\$143</b>
<b>RS</b> (Fail Safe) - For DC Models only.	<b>add \$20</b>



## 2007

For use in new or replacement installations in metal jambs. Fits a standard 4-7/8" ANSI prep with little jamb modification. Use with locksets having up to 5/8" throw, based on 1/8" door gap.

**Steel Face Plate** 4-7/8" x 1-1/4" — Narrow Style Face Plate — Mortise Backset 1-9/16" — Cavity Depth 9/16" — Cavity Width 5/8" — Cavity Height 1-11/16"

### Price:

<b>2007</b> (Brass Powder Coated)	<b>\$148</b>
<b>2007C</b> (Satin Chrome — BHMA651)	<b>\$153</b>
<b>2007DB</b> (Dark Bronze Powder Coated)	<b>\$153</b>
<b>RS</b> (Fail Safe) - For DC Models only.	<b>add \$20</b>



## 2009

For use in new or replacement installations in metal jambs. Centerline of the latch is 3/8" below ANSI centerline for offset applications. Fits a standard 4-7/8" ANSI prep with little jamb modification. Use with locksets having up to 5/8" throw, based on 1/8" door gap.

**Steel Face Plate** 4-7/8" x 1-1/4" — Narrow Style Face Plate — Mortise Backset 1-9/16" — Cavity Depth 9/16" — Cavity Width 5/8" — Cavity Height 1-11/16"

### Price:

<b>2009</b> (Brass Powder Coated)	<b>\$156</b>
<b>2009C</b> (Satin Chrome — BHMA651)	<b>\$162</b>
<b>2009DB</b> (Dark Bronze Powder Coated)	<b>\$162</b>
<b>RS</b> (Fail Safe) - For DC Models only.	<b>add \$20</b>



# The Adjustable 2000 Series



## 2012

For use in new or replacement, aluminum or hollow, metal jamb installations with locksets having up to 5/8" throw, based on 1/8" door gap.

**Steel Face Plate 4-7/8" x 1-1/4"** — Auxiliary Ramp 3-3/8" — Mortise Backset 1-9/16" — Cavity Depth 9/16" — Cavity Width 5/8" — Cavity Height 1-11/16

### Price:

#### 2012

(Brass Powder Coated)

**\$163**

#### 2012C

(Satin Chrome — BHMA651)

**\$168**

#### 2012DB

(Dark Bronze Powder Coated)

**\$168**

#### RS (Fail Safe)

- For DC Models only.

**add \$20**

# The 1000 Series

## FEATURES

- Releases Under Slight Door Preload
- **Tall latch cavity for easier door alignment.**
- Life Cycles - 500,000
- Holding Force - 1000 lbs
- Non-Handed Operation

## Voltage

## Current/Amps Ohms

## Sound Duty

6-14VAC

0.495 - 1.09

8.5

Buzz Intermittent

6-14VDC

0.650 - 1.24

8.5

Silent Intermittent

16-24VAC

0.270 - 0.48

50.0

Buzz Intermittent

16-24VDC

0.380 - 0.61

50.0

Silent Intermittent



## 1001-2

For use in new or replacement installations in wood and metal jambs. For use with locksets having up to 5/8" throw, based on 1/8" door gap.

**Steel Face Plate 5-7/8" x 1-1/4"** — Narrow Style Face Plate — Mortise Backset 1-1/2" — Cavity Depth 9/16" — Cavity Width 9/16" — Cavity Height 1-11/16"

### Price:

#### 1001-2B

(Brass Powder Coated)

**\$93**

#### 1001-2C

(Satin Chrome — BHMA651)

**\$101**



## 1002-2

For use in new or replacement installations in wood and metal jambs. Auxiliary lever ramps for use with locksets which contain dead locking levers. For use with locksets having up to 5/8" throw, based on 1/8" door gap.

**Face Plate 7-15/16" x 1-7/16"** — Auxiliary Ramp 2-7/8" Height — Mortise Backset 1-1/2" — Cavity Depth 9/16" — Cavity Width 9/16" — Cavity Height 1-11/16"

### Price:

#### 1002-2A

(Aluminum Powder Coated)

**\$122**

#### 1002-2DB

(Dark Bronze Powder Coated)

**\$127**

# ACCESSORIES

## 4850-ITL

**INSTALL 4800 SERIES  
STRIKES FASTER**



## ANSI-ITL

**INSTALL 2-3/4" &  
4-7/8" ELECTRIC  
STRIKES FASTER.**



## 018-4/017TDC-4

**UTILIZES ROLLING CODE  
WITH OVER 4+ BILLION CODES  
AND IN A VARIETY OF COLORS.**



## 4850-ITL

**“Feel” the door work with the strike on the frame... then drill.**

- 4850-ITL installation tool has magnets installed which allows it to attach to steel frames, so you can:
  - Adjust and center the strike before ever drilling a hole eliminating any mistakes.
  - Increase your installation speed on every job.
- 1/4" Spacer included, so the tool becomes 3/4" thick, and is also magnetized. (screws on side anchor the spacer to the tool)
- Included custom center punch makes precise marks on the frame for drilling. Marks all anchor pin holes, mounting screws, power, and optional LB sensor.
- Patented

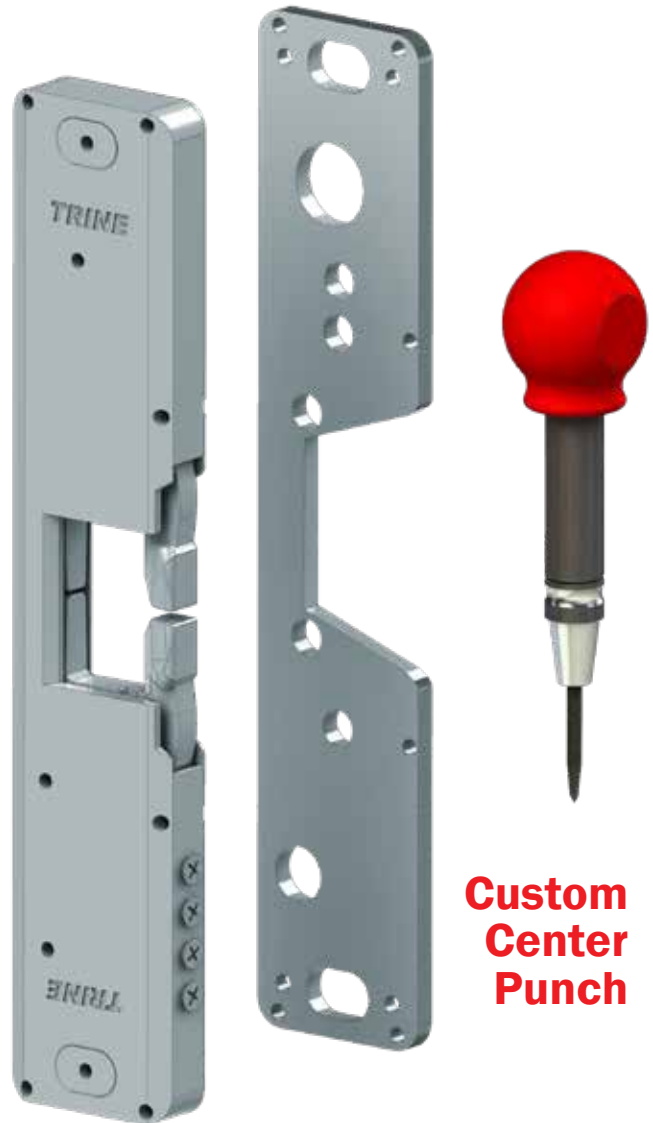
**Price:**  
**4850-ITL     \$475**



To really see the **POWER** of the **4850-ITL** watch our video...

<https://www.trineonline.com/4850itl.php>

Or search **“4850ITL”** on **YouTube**



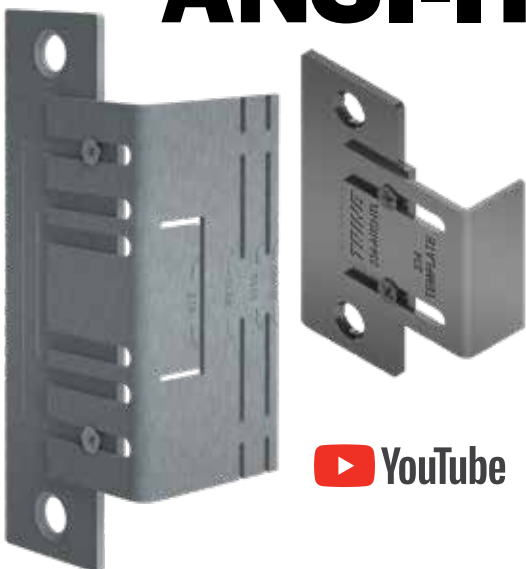
**Custom  
Center  
Punch**

## ANSI-ITL

A comprehensive installation tool for our Premium 2-3/4" and 4-7/8" ANSI electric strikes

- The ANSI-ITL installation tool was designed to allow you to easily install these popular strikes:
 

-234	-234X-375	-323478LC	-323478F-LC	-4100
-4100DB	-4100DBDL	-4300	-478	-478X-375
				-EN400
- Screw directly into the pre-existing tabs and mark.
- Carbide tip scribe included
- Adjustability allows for use with Timely®/Redi®/Raco®/IDP® style frames.



**YouTube**



See the **ANSI-ITL** video on **YouTube** or our website.

[https://www.trineonline.com/ansi\\_itl.php](https://www.trineonline.com/ansi_itl.php)

**ANSI-ITL     Price:**  
**\$95**

# Accessories

# Signal Kits & Transformers

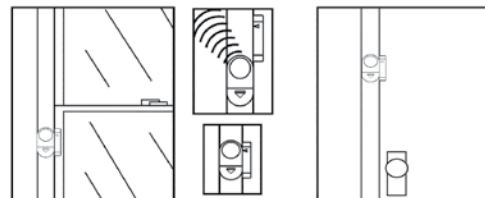


## 215 — WINDOW/DOOR ENTRY/EXIT SIGNAL KIT

- N/O magnetic contact switch activates alarm
- User can set for Chime or 105db alarm sound
- On/Off switch
- No wiring
- (3) L1154 batteries (included)
- Contacts provided with mounting tape

**Price:**

**215      \$17**



## 598 — CLAMP ON TYPE/TRI VOLT (AC)

- Equipped with convenient screw-bracket mounting clamp for standard 1/2" knockouts
- 120 volt primary AC
- 2-15/16"D x 2-7/32"H x 2-11/32"W 1lb 6oz

598 Electric Characteristics:

**8VAC — 20VA — 2.50 AMPS**  
**16VAC — 30VA — 1.88 AMPS**  
**24VAC — 30VA — 1.25 AMPS**

**Price:**

**598    \$39**

**599    \$39**

## 599 — (2) — CLAMP ON TYPE (AC)

- Equipped with convenient screw-bracket mounting clamp for standard 1/2" knockouts
- 120 volt primary AC
- Electric Characteristics: **24VAC — 40VA — 1.65 AMPS**
- 2-15/16"D x 2-3/16"H x 2-11/32"W 1lb 6oz



## 5204 — PLUG IN TYPE (AC)

- 120 volt primary AC
- Electric Characteristics: **12VAC — 20VA — 1.667 AMPS**
- 2"D x 3"H x 2-1/2"W 7oz

**Price:**

**5204      \$33**



## 5205 — PLUG IN TYPE/TRI VOLT (AC)

- 120 volt primary AC
- 2"D x 3"H x 2-1/2"W 7oz

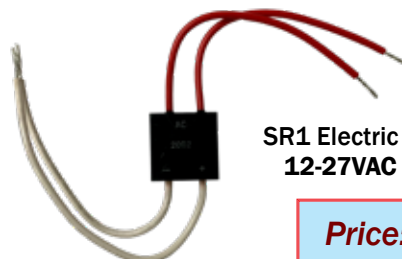
5205 Electric Characteristics:

**8VAC — 10VA — 1.25 AMPS**  
**16VAC — 10VA — 0.62 AMPS**  
**24VAC — 20VA — 0.83 AMPS**

**Price:    \$39**

## SR1 — SILICON RECTIFIER (SR-1)

- For converting AC voltage to DC voltage
- For AC power supplies up to 27 volt AC 1 amp.
- Size 1" x 1/2" x 1"



SR1 Electric Characteristics:  
**12-27VAC — 1.00 AMPS**

**Price:    \$32**



# Wireless Controller & Transmitter



## 017TDC-4 — WIRELESS CONTROLLER

UTILIZES ROLLING CODE

- 500' Range
  - 2 Channel receiver and transmitter
  - Independently programmable A & B channel.
  - 4, 8, 16 second delay or alternate action trigger
  - Dry contact relay rated up to 30V @ 5 amps
  - Single push button program erase (for security)
  - Screw terminal connections
  - Up to 8 transmitters per one receiver.
  - FCC-IC approved.
- **Not backwards compatible with any previous 017TDC/018 models.**



Price: **\$115**

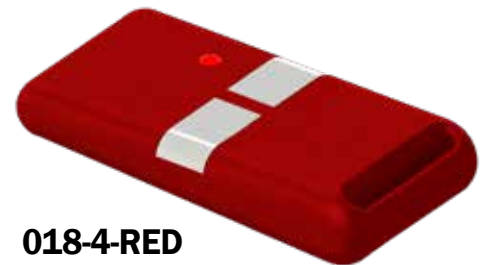
## 018-4 — WIRELESS TRANSMITTER

TWO BUTTON TRANSMITTER

- Four color options
- 8 transmitters per receiver.
- LED indicates operation
- Rolling Code technology provides self learning and 4+ billion codes.
- A-23 Battery Included
- FCC-IC approved



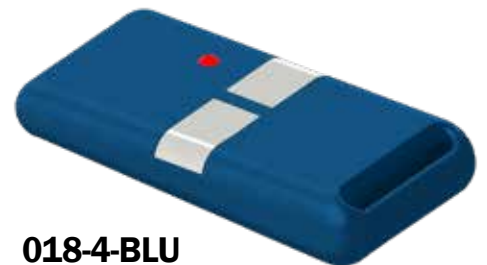
018-4-WHT



018-4-RED



018-4-BLK



018-4-BLU

**PLEASE SPECIFY COLOR  
WHEN ORDERING**

Price:

018-4-BLK  
018-4-BLU  
018-4-RED  
018-4-WHT

**\$44**

# Accessories

## Bells, Buzzers, & Switches

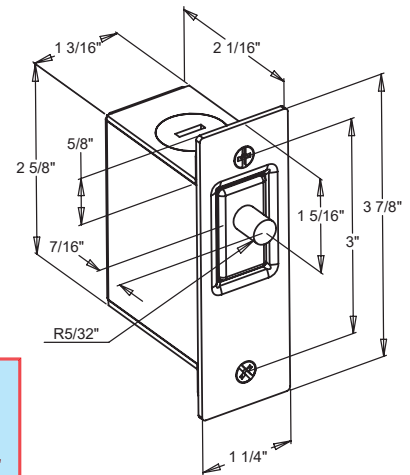
### 342 — ELECTRIC DOOR SWITCH (NARROW STYLE)



- Face plate brass finish 3-7/8"H x 1-1/4"W
- Box 2-5/8"H x 1-3/16"W x 2-1/8"D
- Switch Rating: 120VAC, 10 Amps 250VAC, 5 Amps
- Field selectable N/C or N/O
- Stamped steel case — UL, CSA listed switch & wire leads
- Faceplate Powder Coated Brass
- 4 - knockouts 7/8"

**Price:**

**342     \$31**



### 270 — BUZZER

- Enclosed buzzer — 92db sound at 3 feet
- Operating range 3-6VDC, 8-16 VAC, 1 Amp draw
- Aluminum powder coat finish
- Includes mounting hardware

**Price:**

**270     \$23**



### 272 — BELL

- 100 db sound at 3 feet — 2-1/2" open bell
- Operating range 3-6VDC, 8-16 VAC, 1 Amp draw
- Aluminum powder coat finish
- Includes mounting hardware

**Price:**

**272     \$25**



### 274 — BELL

- 100 db sound at 3 feet — 4" open bell
- Operating range 3-6VDC, 8-16 VAC, 1 Amp draw
- Aluminum powder coat finish
- Includes mounting hardware

**Price:**

**274     \$27**



### 275 — ENCLOSED BELL

- 88 db at 3 feet
- Operating range: 3-8VDC, 1.4 Amp draw
- 6-8VAC, 0.7 Amp draw
- Grey finish — Includes mounting hardware

**Price:**

**275     \$32**



### 276 — ENCLOSED BELL & BUZZER

- 88 db at 3 feet
- Operating range: 3-8VDC, 1.4 Amp draw
- 6-8VAC, 0.7 Amp draw
- Grey finish — Includes mounting hardware

**Price:**

**276     \$39**

# Accessories - Pushbuttons



**\*PUSH BUTTONS MUST BE PURCHASED IN PACKS OF 10 UNLESS NOTED\***

<b>JRP, SRP</b>		<b>JRP – Polished Solid Brass w/ black center</b> 1-3/4" Body Diameter – for use up to 30 volts AC or DC	<b>Price:</b> <b>JRP</b> \$12 <sup>.50</sup>
		<b>SRP – Polished Solid Brass w/ black center</b> 2-1/4" Body Diameter – for use up to 30 volts AC or DC	<b>Price:</b> <b>SRP</b> \$13 <sup>.50</sup>
<b>45A, 45LA</b>		<b>45A – Silver Rim with Pearl Center</b> 5/8" Body Diameter – for use up to 30 volts AC or DC	<b>Price:</b> <b>45A</b> \$9 <sup>.50</sup>
		<b>45G – Gold Rim with Pearl Center</b> 5/8" Body Diameter – for use up to 30 volts AC or DC	<b>Price:</b> <b>45G</b> \$9 <sup>.50</sup>
		<b>45LA – Silver Rim with Lighted Pearl Center</b> 5/8" Body Diameter – for use up to 16 volts AC or DC	<b>Price:</b> <b>45LA</b> \$11 <sup>.50</sup>
		<b>45LG – Gold Rim with Lighted Pearl Center</b> 5/8" Body Diameter – for use up to 16 volts AC or DC	<b>Price:</b> <b>45LG</b> \$11 <sup>.50</sup>
<b>65P</b>		<b>65P - Weatherproof Polished Solid Brass</b> 2-1/2" Body Diameter for use up to 30 volts AC or DC <b>*Sold in single packs*</b>	<b>Price:</b> <b>65P</b> \$73 <sup>.00</sup>
		<b>66B – Black with White Bar Molded Plastic</b> 2-3/4" L X 3/4" W X 5/8" H – for use up to 30 volts AC or DC	<b>Price:</b> <b>66B</b> \$9 <sup>.50</sup>
<b>66 Series</b> 66B Shown		<b>66C – Silver w/ White Bar Molded Plastic</b> 2-3/4" L X 3/4" W X 5/8" H – for use up to 30 volts AC or DC	<b>Price:</b> <b>66C</b> \$9 <sup>.50</sup>
		<b>66G – Gold w/ White Bar Plated Molded Plastic</b> 2-3/4" L X 3/4" W X 5/8" H – for use up to 30 volts AC or DC	<b>Price:</b> <b>66G</b> \$9 <sup>.50</sup>
		<b>66W – White with White Bar Molded Plastic</b> 2-3/4" L X 3/4" W X 5/8" H – for use up to 30 volts AC or DC	<b>Price:</b> <b>66W</b> \$9 <sup>.50</sup>
		<b>66LB – Lighted Black w/ White Bar Molded Plastic</b> 2-3/4" L X 3/4" W X 5/8" H – for use up to 16 volts AC or DC	<b>Price:</b> <b>66LB</b> \$12 <sup>.50</sup>
		<b>66LC – Lighted Silver w/ White Bar Plated Molded Plastic</b> 2-3/4" L X 3/4" W X 5/8" H – for use up to 16 volts AC or DC	<b>Price:</b> <b>66LC</b> \$12 <sup>.50</sup>
		<b>66LG – Lighted Gold w/ White Bar Plated Molded Plastic</b> 2-3/4" L X 3/4" W X 5/8" H – for use up to 16 volts AC or DC	<b>Price:</b> <b>66LG</b> \$12 <sup>.50</sup>
		<b>66LW – Lighted White w/ White Bar Molded Plastic</b> 2-3/4" L X 3/4" W X 5/8" H – for use up to 16 volts AC or DC	<b>Price:</b> <b>66LW</b> \$12 <sup>.50</sup>
		<b>71A – Anodized Aluminum Housing w/ Black Bar</b> 2-3/4" L X 1" W X 3/4" H – for use up to 30 volts AC or DC	<b>Price:</b> <b>71A</b> \$13 <sup>.50</sup>
<b>71 Series</b> 71A & 71G Shown		<b>71G – Anodized Brass Aluminum Housing w/ Black Bar</b> 2-3/4" L X 1" W X 3/4" H – for use up to 30 volts AC or DC	<b>Price:</b> <b>71G</b> \$13 <sup>.50</sup>
		<b>71LA – Lighted Anodized Aluminum Housing w/ White Bar</b> 2-3/4" L X 1" W X 3/4" H – for use up to 16 volts AC or DC	<b>Price:</b> <b>71LA</b> \$15 <sup>.50</sup>
		<b>71LG – Lighted Anodized Brass Aluminum Housing w/ White Bar</b> 2-3/4" L X 1" W X 3/4" H – for use up to 16 volts AC or DC	<b>Price:</b> <b>71LG</b> \$15 <sup>.50</sup>
<b>91P</b>		<b>91P – Multi-Family, Polished Solid Brass Housing</b> 4-3/4" L X 5/8" W X 3/4" H – for use up to 30 volts AC or DC	<b>Price:</b> <b>91P</b> \$28 <sup>.00</sup>
		<b>94P – 3-Button Multi-Family, Polished Solid Brass Housing</b> 7" L X 5/8" W X 3/4" H – for use up to 30 volts AC or DC <b>91P/94P Must be ordered in 5 pack quantity</b>	<b>Price:</b> <b>94P</b> \$30 <sup>.00</sup>

# Glossary

## ALTERNATING CURRENT (AC)

An electric current that reverses direction in a circuit at regular intervals.

## CONTINUOUS DUTY

A device that is designed to operate continuously without rest.

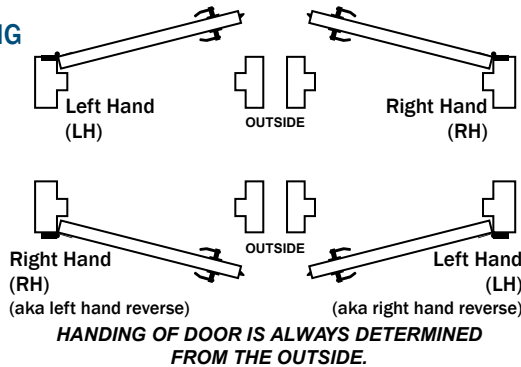
## CURRENT

Measured flow of electrons through an electrical conductor. Normally measured in amperes.

## DIRECT CURRENT

An electric current flowing in one direction.

## DOOR HANDING



## FAIL SAFE

A device that is normally open and locks when power is applied to the unit. EXAMPLE: During a loss of power the device remains open. Often listed as "RS"

## FAIL SECURE

A device that is normally closed or locked until power is applied. EXAMPLE: During a loss of power the device remains locked.

## FUSE

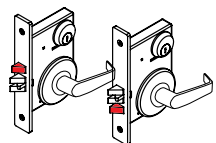
A device that is placed in the path of energy that will break the circuit if the current becomes too great. This is accomplished by having a strip of metal that will melt when the current exceeds the required amount.

## INTERMITTENT DUTY

A device that is designed to operate for a short period of time; generally less than 45 seconds.

## LOCKSET TYPES

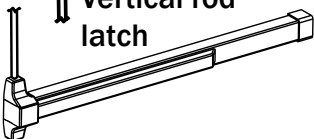
### Mortise Lock



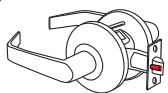
### Dor-O-Matic



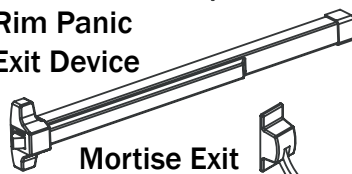
### Vertical rod latch



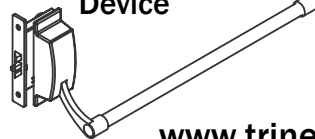
### Cylindrical Lock



### Rim Panic Exit Device



### Mortise Exit Device



### Dead Latch



## NORMALLY OPEN

The contacts of a switch or relay are normally open or not connected. When activated the contacts close or become connected. EXAMPLE: A switch is not depressed and the circuit is not complete.

## NORMALLY CLOSED

The contacts of a switch or relay are normally closed or connected. When activated the contacts open or become disconnected. EXAMPLE: A switch is not depressed and the circuit is complete.

## OHMS

The measure of resistance of an electrical device to resist the flow of energy.

## RECTIFIER

A device that is commonly used to convert AC to DC. Commonly used to silence the audible sound that an electrical strike can make while energized on AC current.

## RELAY

An electro-magnetic device activated by a variation in conditions in one electric circuit and controlling a larger current or actuating other devices in the same or another electric circuit.

## STANDARD VOLTAGE

Electric door strike supplied with magnetic coils: 4-6VDC/8-16VAC. Electric door strikes supplied with a solenoid coil: 6-10VDC, 10-16VAC: other voltages available.

## TRANSFORMER

A device consisting essentially of two or more coils of insulated wire that transfers alternating current by electro-magnetic induction from one winding to another at the same frequency, but usually with changed voltage & current.

## VOLT

A unit of electric potential equal to the difference of electric potential between two points that have a resistance of one ohm and through which a current of one amperes is flowing.

## VOLTAGE DROP?

We recommend the following wire sizes:

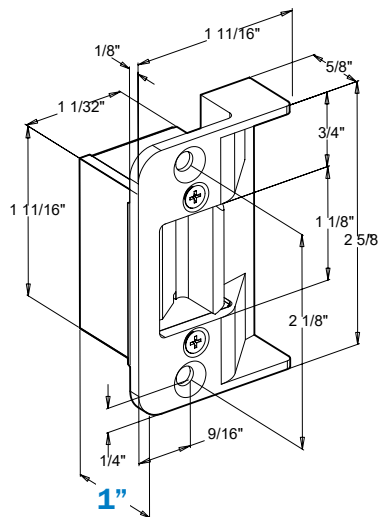
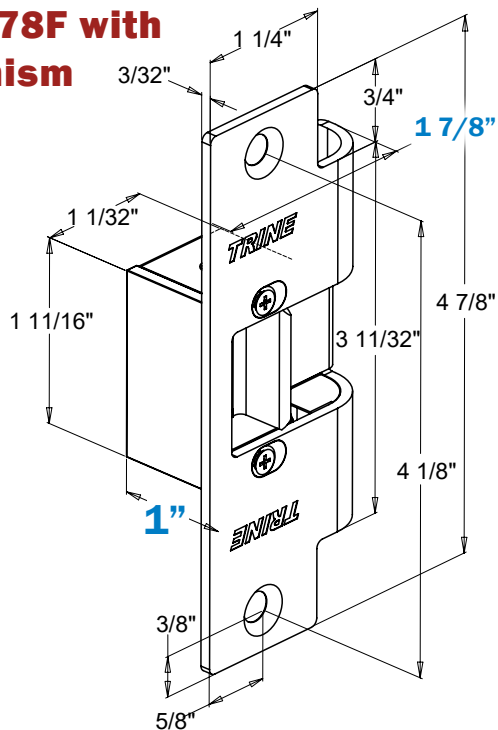
Wire Length	12V	24V
Up to 50 ft.	18 AWG	20 AWG
51-150 ft.	16 AWG	18 AWG
151-300 ft.	14 AWG	16 AWG
301-600 ft.	12 AWG	14 AWG

## WATT

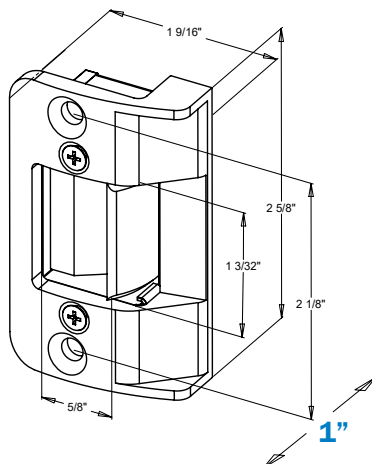
The power developed in a circuit by a current of one ampere flowing through a potential difference of one volt.



## 478 & 478F with mechanism

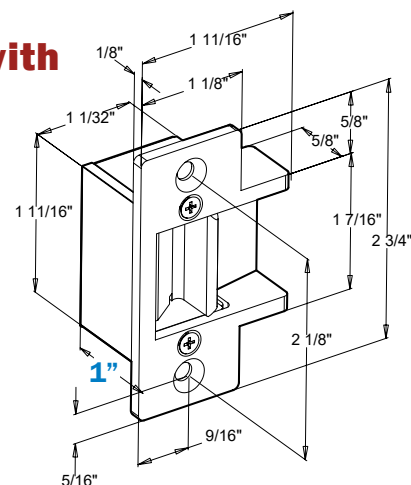


## 258 with mechanism

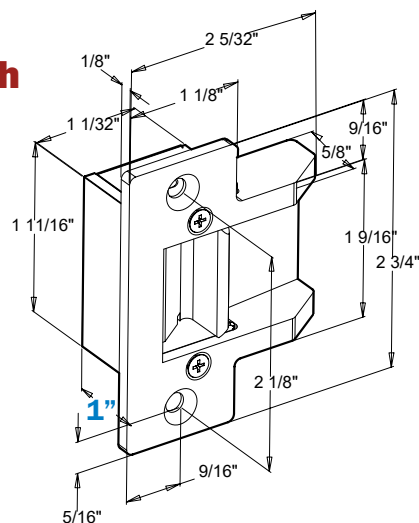


## 258RD with mechanism

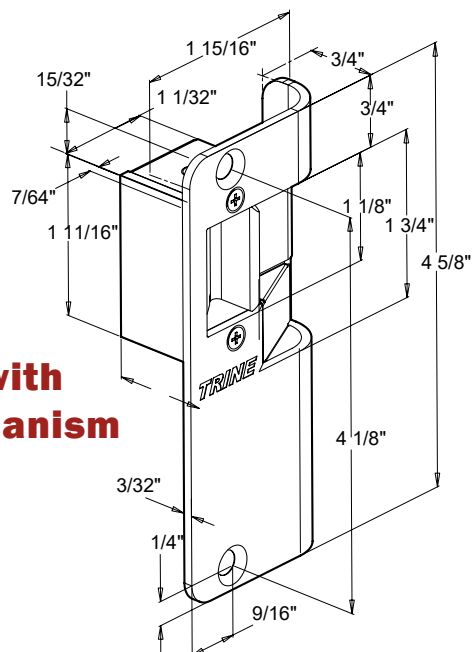
## 234 & 234F with mechanism



## 234X-375 with mechanism



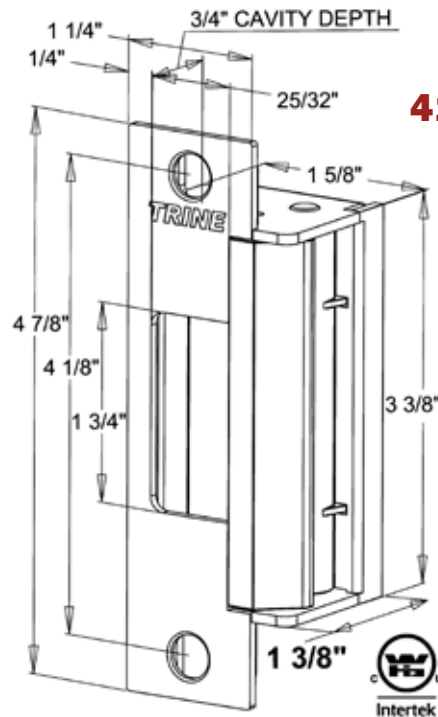
## 458 with mechanism





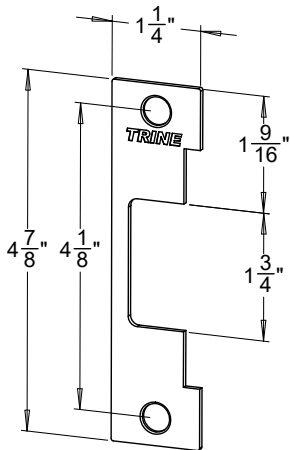
**BUILT IN AMERICA**  
**BASED IN AMERICA**  
**BUY AMERICAN**

# 4100 SERIES DIMENSIONS

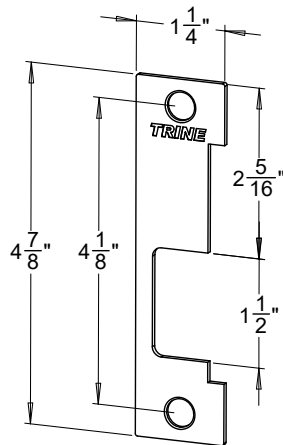


**4100 with CC  
Faceplate**

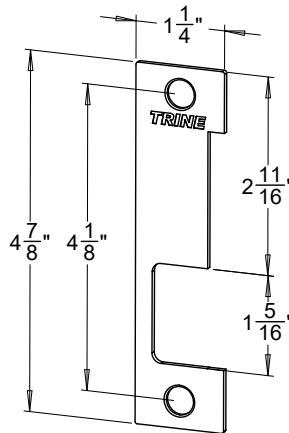
## 4100 Faceplates



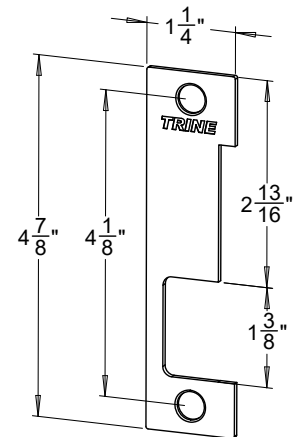
**CC**



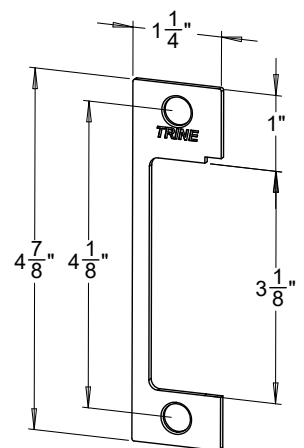
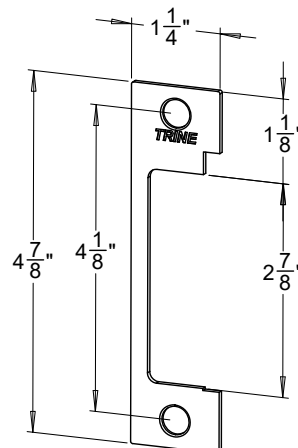
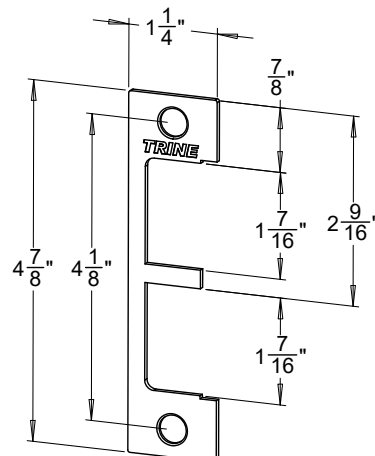
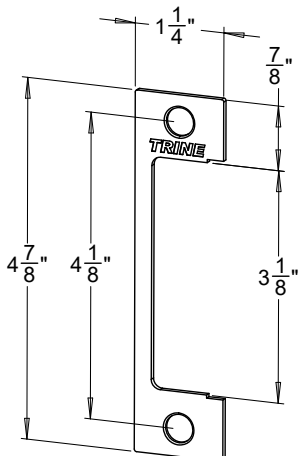
**MHO**



**MMO**

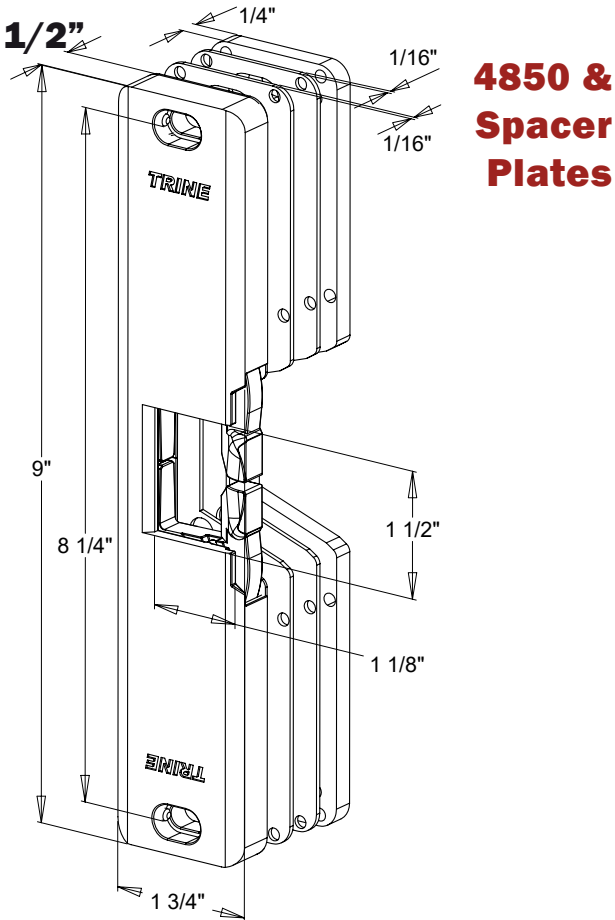
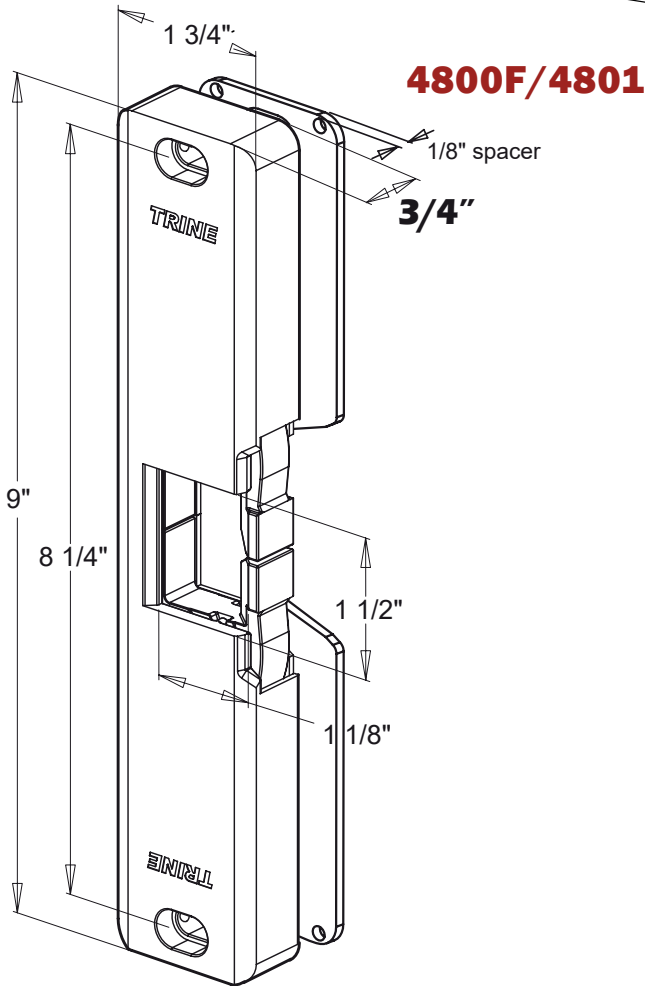
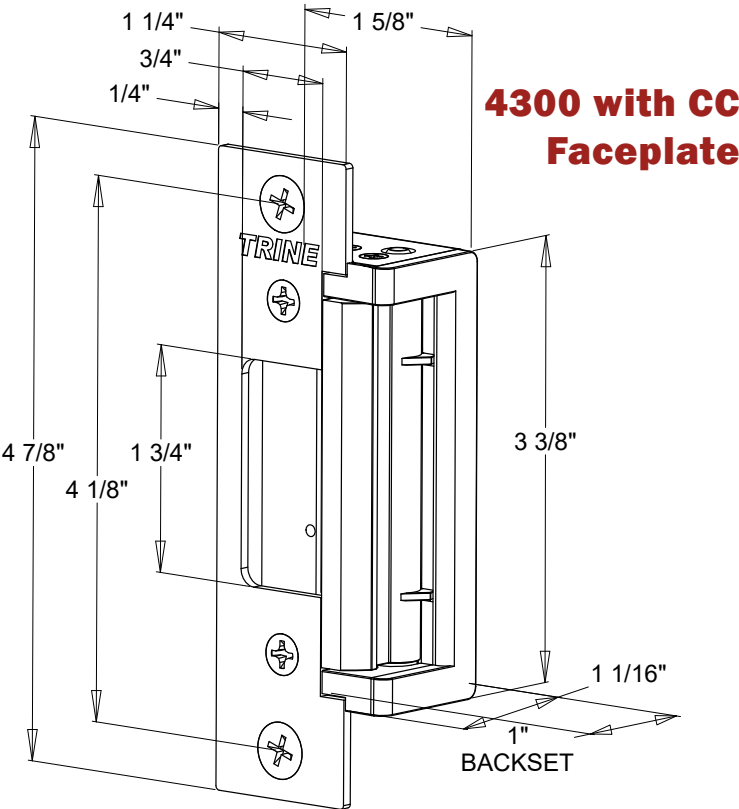


**MLO**



# 4300, 4800 SERIES

## DIMENSIONS





---

---

---

---

---

---

A large, empty rectangular box with a thin black border, intended for a drawing or illustration.

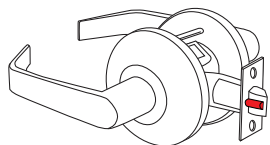


# Strike Selector

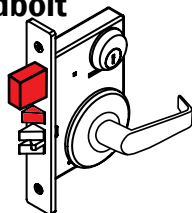


**What lockset do you have?**

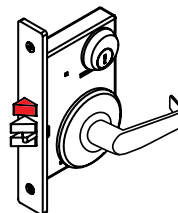
**Cylindrical Lock**



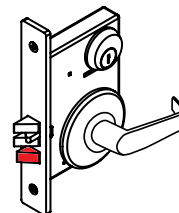
**Mortise with a deadbolt**



**Mortise Lock**



**Mortise Lock**



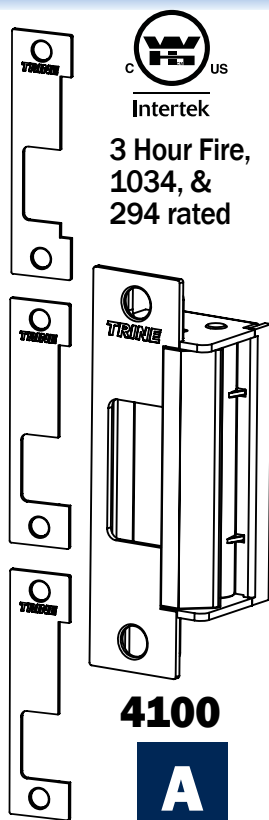
**Your choice of electric strikes are:**

**A C F I J K L M N O**

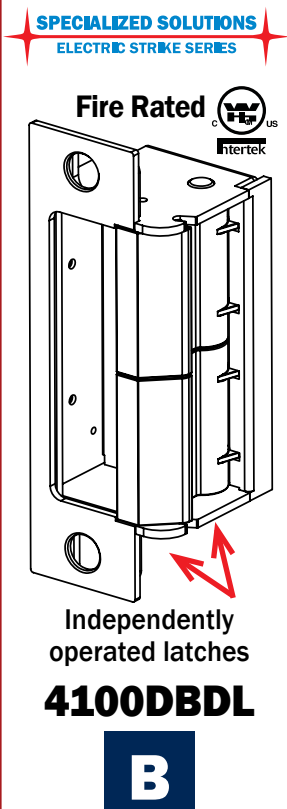
**B**

**A F**

**A C**



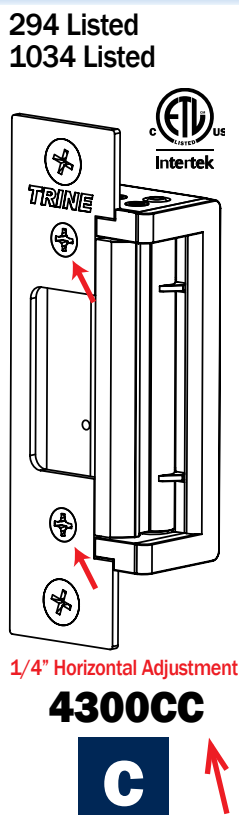
3 Hour Fire, 1034, & 294 rated



**SPECIALIZED SOLUTIONS**  
**ELECTRIC STRIKE SERIES**



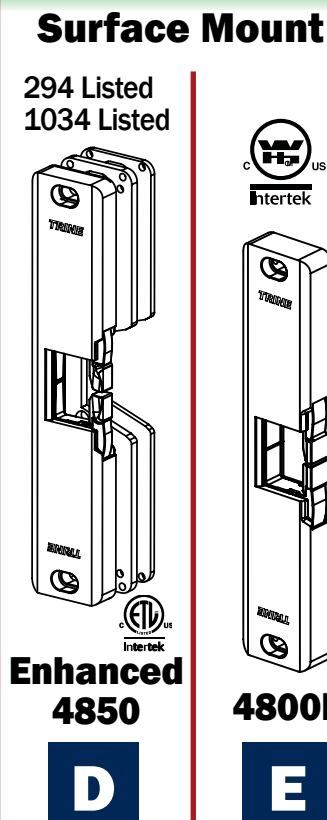
Independently operated latches



294 Listed  
1034 Listed



1/4" Horizontal Adjustment

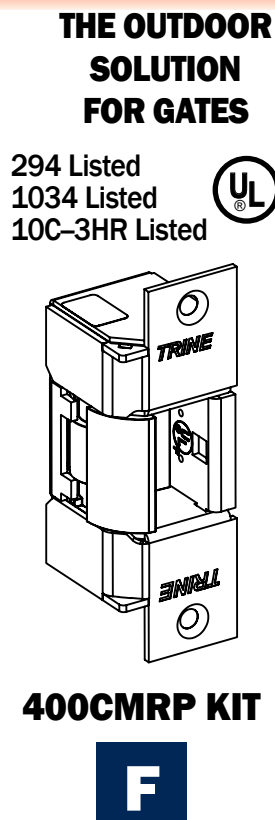


**Surface Mount**

294 Listed  
1034 Listed



**Enhanced**



**THE OUTDOOR SOLUTION FOR GATES**

294 Listed  
1034 Listed  
10C-3HR Listed



## Compatible Door Frames

- Aluminum
- Hollow Metal
- Wood

**Use the 4100RX for Raco® frames (covers the extra 1/4" gap in the frame)**

- Aluminum
- Hollow Metal
- Wood

**The only strike allowing for deadbolt privacy with an override.**

- Aluminum
- Hollow Metal
- Wood

**1/4" horizontal adjustment**



(CONTINUED)

- Aluminum
- Hollow Metal
- Wood

For use with the Yale Squarebolt® or Corbin Russwin Securebolt™

**\*NOTE\***

Use the **4801**

- Hollow Metal
- Wood

**Great for Gates**

The CMRP works with Cylindrical, Mortise, and Rim Panic devices

**B**  
(CONTINUED)

**4100DB & 4100CDBM**  
(4 FACEPLATES) (8 FACEPLATES!)

NIGHT LATCH ONLY  
FUNCTIONALITY - FOR MORTISE LOCKS WITH DEADBOLTS

**4300**

Four faceplates included, two 4-7/8" faceplates, one 6-7/8", and one 7-15/16".

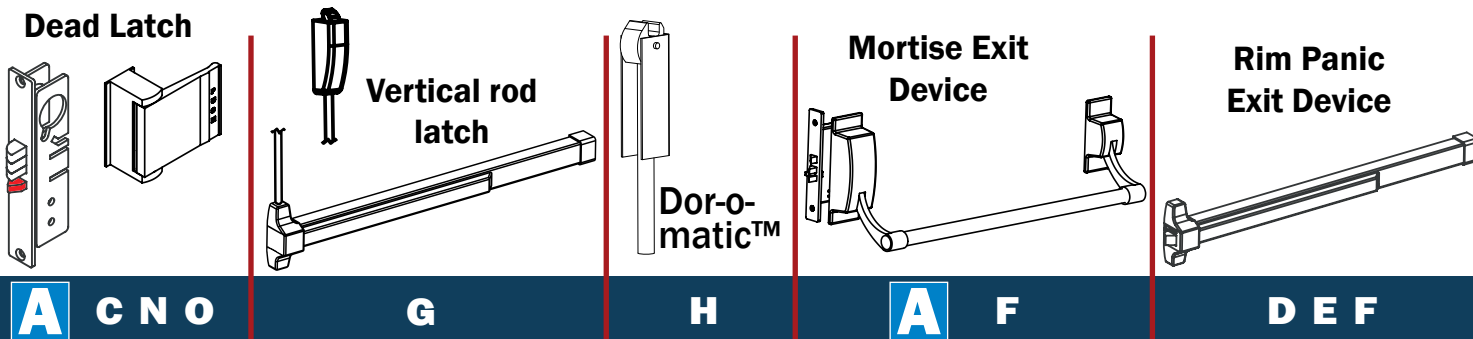
**4300CC**

Two 4-7/8" faceplates (square and rounded corners), best pricing option in the 4300 series.

**4300CC-DKBZ-32D**

4-7/8" faceplates only, two color options included, best color option of the 4300 series.

# Strike Selector

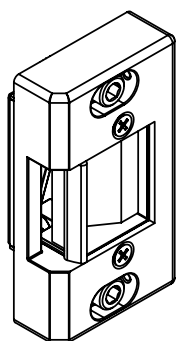


## Smallest Electric Strike in the World

*Not recommended for use on uncovered exterior doors.*

**SPECIALIZED SOLUTIONS**  
ELECTRIC STRIKE SERIES

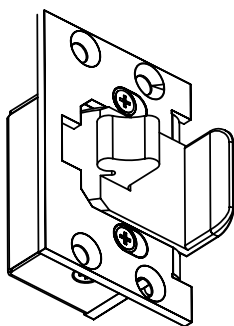
**THE VERTICAL ROD LATCH SOLUTION**



**3275VRP-LC**

**G**

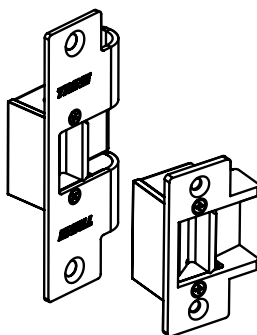
**The Dor-O-Matic™ Solution!!!**



**3250SOM-LC STRIKE-O-MATIC™**

**H**

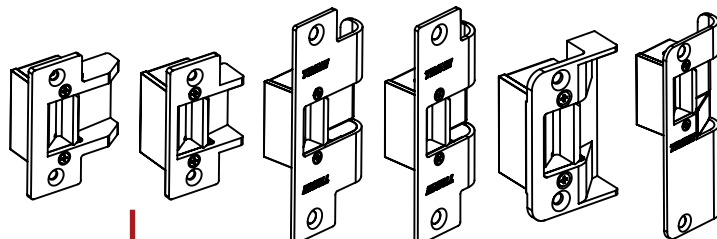
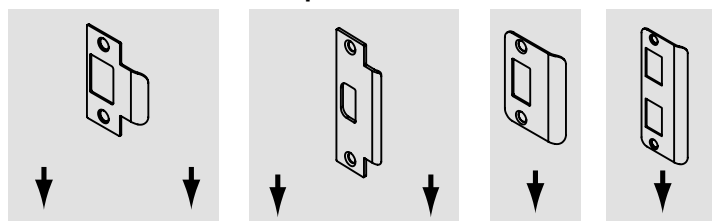
**FIRE RATED MODELS**



**323478F-LC  
323478FX-LC**

**I**

**Compatible Strike Plates**



**234X-375**

**J**

**234**

**K**

**478X-375**

**L**

**478**

**M**

**258, 258RD**

**N**

**458**

**O**

## Compatible Door Frames

- Aluminum
- Hollow Metal
- Wood

**2-3/4" WIDE PLATE. FITS IN TIGHT SPOTS IN THE HEADER**

- Aluminum
- Hollow Metal
- Wood

- Aluminum
- Formed Sheet Metal
- Wood

- Formed Sheet Metal
- Wood

- Hollow Metal
- Wood

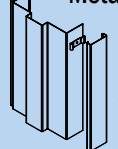
- Aluminum
- Formed Sheet Metal
- Wood

- Hollow Metal
- Wood

- Aluminum

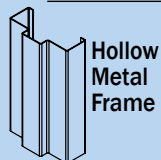
- Aluminum

**Formed Sheet Metal**



**\*\*EXAMPLE: PRE-FINISHED FRAMES LIKE TIMELY® REDI® RACO® FRAMEWORKS TYPE-II® WITH SNAP-ON TRIMS.**

**Frame Images**



**Hollow Metal Frame**



**Aluminum**



**Wood**

*Use 2" long mounting screws.*



**BUILT IN AMERICA**

**BASED IN AMERICA**

**BUY AMERICAN**

# CONDITIONS OF SALE

## Distributors and Other Commercial Customers

Note: The following Conditions of Sale are subject to change: All Sales Transactions are subject to the latest published Conditions of Sale of the Trine Access Technology Corporation and to any Special Conditions of Sale which may be contained in applicable Trine quotations and acknowledgements. Modified product warranties are provided to consumers.

1. **ACCEPTANCE, GOVERNING PROVISIONS AND CANCELLATIONS.** No order for Trine Access Technology or services shall be binding upon Trine until accepted by a writing of an authorized official of Trine or by shipment or other performance of such order. Any such order shall be subject to these Conditions of Sale, and acceptance shall be expressly conditioned on assent to such Conditions, which assent shall be deemed given unless purchaser shall expressly notify Trine to the contrary prior to the earlier of any shipment or other performance of an order by Trine or within five (5) days after purchaser's receipt of any acknowledgement or confirmation of such order. Trine expressly reserves the right to reject and withdraw acceptance of any order.

No order accepted by Trine may be altered or modified by purchaser unless agreed to in a writing signed by an authorized official of Trine; and no such order may be cancelled or terminated except upon payment of Trine's loss, damage and expense arising from such cancellation or termination. These Conditions of Sale may not be supplemented or modified by course of dealing, course of performance or any oral communication between the parties. No modified or other conditions will be recognized by Trine unless specifically agreed to in writing and failure of Trine to object to provisions contained in any purchase order or other communication from a purchaser (including, without limitation, penalty clauses of any kind) shall not be construed as a waiver of these Conditions nor an acceptance of any such provisions.

Unless otherwise agreed in writing by a duly authorized representative of Trine, products sold hereunder are not intended for use or in connection with a nuclear facility or activity. If so used, Trine disclaims all liability for any nuclear damage, injury or contamination, and purchaser shall indemnify Trine against any such liability, whether as a result of breach of contract, warranty, tort (including negligence) or otherwise. Any contract for sale and these Conditions shall be governed by and construed according to the laws of the State of Connecticut. Any dispute arising out of or relating to these Conditions of Sale or any matter relating hereto shall be brought in the federal or state courts sitting in or for the Bethel, Connecticut, and the parties waive any objection they may have to the jurisdiction or subject matter of these courts.

2. **QUOTATIONS AND PRICES.** Written quotations are conditioned upon acceptance by purchaser within thirty (30) days from the date issued and shall be considered as offers by Trine to sell during such thirty (30) day period on these Conditions of Sale unless sooner terminated by notice. Other Trine publications are maintained as sources of general information and are not quotations or offers to sell.

All clerical errors are subject to correction.

**MINIMUM ORDER: \$100.00 Net. DROP SHIP FEE: Trine reserves the right to charge a fixed fee of \$10.00 for shipping to an address other than customers.**

All prices are subject to change without notice. In the event of a net price change, the price of equipment on order but unshipped will be adjusted to the price in effect at the time of shipment. Downward adjustment of prices shall apply only to unshipped portions of outstanding orders.

3. **PAYMENT TERMS.** Unless otherwise agreed by Trine, terms of payment for Trine products to purchasers of satisfactory credit are either (1) a 1% cash discount for all invoices paid in full if the payment is received by Trine within 10 days after the date of Trine's invoice or (2) full payment to be received by Trine within 30 days after the date of Trine's invoice. Applicable terms of payment are stated in quotations or on the discount sheet for the product involved. Cash discount will apply only to the net amount of the invoice after transportation charges and taxes. A late charge of 1% per month or the maximum amount permitted by law will be applied to all past due amounts.

Trine reserves the right at any time to demand full or partial payment before proceeding with a contract of sale if, in its judgment, the financial condition of purchaser shall not justify the terms of payment specified. If delivery is delayed or deferred by purchaser beyond the scheduled ate, payment shall be due in full when Trine is prepared to ship and the products may be stored at the risk and expense of purchaser. If purchaser defaults when any payment is due, then the whole contract price shall become due and payable upon demand, or Trine, at its option, without prejudice to other lawful remedies, may defer delivery or cancel the contract for sale.

4. **TAXES AND OTHER CHARGES.** Any manufacturer's tax, retailer's occupation tax, use tax, sales tax, excise tax (except the Federal excise tax on vehicles), duty, custom, inspection or testing fee, or other tax, fee or charge of any nature whatsoever, imposed by any governmental authority, on or measured by any transaction between Trine and purchaser, shall be paid by purchaser in addition to the prices quoted or invoiced. In the event Trine shall be required to pay any such tax, fee or charges, purchaser shall reimburse Trine therefore; or, in lieu of such payment, purchaser shall provide Trine at the time the order is submitted with an exemption certificate or other document acceptable to the authority imposing the same. Purchase orders must state the existence and amount of any such tax, fee or charge which it shall be Trine's responsibility to collect from purchaser and pay.

5. **DELIVERY.** Delivery of products to a carrier at any Trine facility or other shipping point shall constitute delivery to purchaser; and, regardless of freight payment, title and all risk of loss or damage in transit shall pass to purchaser at that time. Trine cannot be held responsible for breakage after having received "in good order" receipts from the transportation company. All claims for loss and damage must be made by purchaser to the carrier. Claims for shortages or other errors must be made in writing to Trine within 15 days after receipt of shipment, and failure to give such notice shall constitute unqualified acceptance and a waiver of such claims by purchaser. Unless otherwise agreed by Trine in quotations, discount schedules, catalogs or other Trine publications, all expenses of freight FOB Trine's place of shipment shall be borne by purchaser. No allowance will be made in lieu of transportation if purchaser accepts shipment at factory, warehouse, freight station, or otherwise supplies its own transportation. Method and route of shipment will be at the discretion of Trine unless purchaser shall specify otherwise, and any additional expense of the method or route of shipment specified by purchaser shall be borne by purchaser. Trine reserves the right to make delivery in installments, unless otherwise expressly stipulated in the contract for sale; and all such installments when separately invoiced shall be paid for when due per invoice, without regard to subsequent deliveries. Delay in delivery of any installment shall not relieve purchaser of its obligations to accept remaining deliveries.

6. **SUBSTITUTES.** Trine may furnish suitable substitutes for materials unobtainable because of priorities or regulations established by governmental authority or non-availability of materials from suppliers, and assumes no liability for deviation from published dimensions and descriptive information not essential to proper performance of the products.

7. **WARRANTIES TO DISTRIBUTORS AND OTHER COMMERCIAL CUSTOMERS.** Trine warrants products manufactured by it to be free from defects in materials and workmanship for a period of one (1) year from date of shipment by Trine, except for all Axiom (R) labeled products which are covered for two (2) years from date of shipment by Trine. If within such period any such products shall be proved to Trine's satisfaction to be so defective, such products shall be repaired or replaced at Trine's option. This warranty shall not apply (a) to products not manufactured by Trine, (b) to products which shall have been repaired or altered by other than Trine so as, in its judgment, to affect the same adversely, or (c) to equipment which shall have been subjected to negligence, accident or damage by circumstances beyond Trine's control, or to improper operation, maintenance or storage, or to other than normal use or service. With respect to products not manufactured by Trine, the warranty obligations of Trine shall in all respect conform and be limited to the warranty actually extended to Trine by its supplier. The foregoing warranties do not cover reimbursement for transportation, removal, installation, or other expenses which may be incurred in connection with repair or replacement. Except as may be expressly provided in an authorized writing by Trine, Trine shall not be subject to any other obligations or liabilities whatsoever with respect to products manufactured by Trine or services rendered by Trine.

THE FOREGOING WARRANTIES ARE EXCLUSIVE AND IN LIEU OF ALL OTHER EXPRESS AND IMPLIED WARRANTIES, INCLUDING WITHOUT LIMITATION TITLE, MERCHANTABILITY AND FITNESS FOR A PARTICULAR PURPOSE.

8. **LIMITATION OF LIABILITY.** Anything to the contrary herein contained notwithstanding, TRINE ACCESS TECHNOLOGY, ITS CONTRACTORS AND SUPPLIERS OF ANY TIER SHALL NOT BE LIABLE IN CONTRACT, IN TORT (INCLUDING NEGLIGENCE OR STRICT LIABILITY) OR OTHERWISE FOR ANY SPECIAL, INDIRECT, INCIDENTAL CONSEQUENTIAL, PUNITIVE, OR EXEMPLARY DAMAGES WHATSOEVER. The remedies of the purchaser set forth herein are exclusive where so stated and the total cumulative liability of Trine, its contractors and suppliers of any tier, with respect to this contract or anything done in connection therewith, such as the use of any product covered by or furnished under the contract, whether in contract, in tort (including negligence or strict liability) or otherwise, shall not exceed the price of the product or part on which such liability is based. Further, any claim purchaser may have with reference to Trine products or services sold or provided hereunder shall be deemed waived by purchaser unless asserted against Trine in writing within 90 days from the date the purchaser discovered, or should have discovered, the basis for the claim.

9. **RETURN OF EQUIPMENT.** No products may be returned without first obtaining Trine's written permission and a returned goods authorization number. Trine shall issue a credit to purchaser for returned goods, subject to the terms of this paragraph, and purchaser will not be entitled to any other form of reimbursement for returns. Products accepted for credit, not involving a Trine error, **shall be subjected to a minimum service charge of \$25.00, or a charge of 20% of invoice**, whichever is greater, plus all transportation charges incurred by Trine. THE MINIMUM RESTOCKING CHARGE IS \$25.00. Returned products must be securely packed to reach Trine without damage, any cost incurred by Trine to put the products in first class condition will be charged to purchaser.

10. **PATENTS.** As to products sold to purchaser by Trine, Trine shall defend any suit or proceeding brought against purchaser so far as based on a claim that said products constitute an infringement of any patent of the United States, if notified promptly in writing and given authority, information and assistance at Trine's expense for the defense of the same. In the event of a final award of costs and damages, Trine shall pay such award. In the event the use of said products by purchaser is enjoined in such a suit, Trine shall, at its own expense, either (a) procure for purchaser the right to continue using said products, (b) modify said equipment to render them non-infringing, (c) replace said products with non-infringing products, or (d) refund the purchase price (less depreciation) and the transportation and installation costs of said products. Trine will not be responsible for any compromise or settlement made without its written consent. The foregoing states the entire liability of Trine for patent infringement, and in no event shall Trine be liable if the infringement charge is based on the use of Trine products for a purpose other than that for which sold by Trine, any alteration to the Trine products or the use of the Trine products with any other product or service not manufactured by Trine. As to any products furnished by Trine to purchaser and manufactured in accordance with designs provided by purchaser, purchaser shall defend, indemnify and hold harmless Trine against any award made against Trine for patent, trademark, or copyright infringement.

11. **PATTERNS AND TOOLS.** Notice will be given if special patterns or tools are required to complete any order. Charges for such patterns or tools do not convey title thereto or the right to remove them from Trine's plant. If patterns or tools are not used for a period of two years, Trine shall have the right to scrap them without notice.

12. **FORCE MAJEURE.** Trine shall not be liable in damages or otherwise for delays in shipment or default in delivery for any reason of force majeure or for any cause beyond Trine's reasonable control including, but not limited to (a) an act of nature; (b) government action, war, riots, civil commotion, embargoes or martial laws, (c) Trine's inability to obtain necessary materials from its usual sources of supply, (d) shortage of labor, raw material, production or transportation facilities or other delays in transit, (e) other contingencies of manufacture or shipment. In the event of any delay in Trine's performance due in whole or in part to any cause beyond Trine's reasonable control, Trine shall have such additional time for performance as may be reasonably necessary under the circumstances. Acceptance by purchaser of any goods shall constitute a waiver by purchaser of any claim for damages on account of any delay in delivery of such goods.

# Cross Reference Chart for Premium Electric Strikes

<b>TRINE</b>	Adams Rite	Folger Adam	H.E.S.	RCI	Von Duprin
<b>4100</b>	----	----	4500, 1500 1006CLB $\Phi$	----	6400 $\Phi$ 6211/6211WF $\Phi$
<b>4100DB</b>	----	----	1600/CDB, 1006/CDB *	2164 or F2164	6400
<b>4100CDBM</b>	----	712/712-75/732 732-75/642CYL $\Phi$	1600CS	----	----
<b>4100DBDL</b>	----	----	----	----	----
<b>4300</b>	7100	----	5000	S & L65U	4200
<b>4300CC</b>	7400		5000C 5200	S & L6514	5100
<b>4800F</b>	----	----	9500, 9600	0162/0162F	6300
<b>4801</b>	----	----	9700	----	----
<b>4850</b>	----	----	9400 <sup><math>\Delta</math></sup> , 9600	0163	----
<b>EN400</b>	7200	712/712-75/732 732-75/642CYL	1006J/7501	2114/F4114*	6211/6211WF
<b>EN800**</b>	74R1	310-4	7000-783S**	0161	6112
<b>EN850**</b>	74R2	310-4	7000-789S**	----	----
<b>EN950</b>	----	310-2	7505	----	6215/6226
<b>EN960</b>	----	310-2 3/4	----	----	6214/6224
<b>3478F</b>	7200	----	5300	F4114	----
<b>323478LC</b>	----	----	----	----	----
<b>323478F-LC</b>	----	----	----	----	----
<b>234 <math>\partial</math></b>	----	----	----	----	----
<b>258<math>\ddagger</math> <math>\partial</math></b>	----	----	----	----	----
<b>458<math>\Omega</math> <math>\partial</math></b>	----	----	----	----	----
<b>478<math>\ddagger</math> <math>\partial</math></b>	7400+	----	5000/5200+501	L6514+	----
<b>3250SOM-LC</b>	----	----	----	----	----
<b>3275VRP-LC</b>	----	----	----	----	----

- + Strike has 1-1/16" backset vs. 1" backset for 3000 Series.  
 $\Omega$  Requires 80% less cutting of frame. Fills the frame preparation of the Adams Rite MS Locks without the need To relocate tabs for 6 5/8" or 6 7/8" electric strikes.  
 $\ddagger$  Requires 60% less frame face cutting other than models listed.  
 $\Delta$  9400 backplate means it can only handle up to a 1/2" throw – The 4850 can take up to a 1" throw.  
 \* UL 90 Minute Fire Rated  
 \*\* All Stainless Steel construction, not fire rated.  
 $\Phi$  Not a shallow (1 3/8") backset – cannot be used in 2" fire rated frames with 1/2" sheetrock ingress  
 $\partial$  Number is for the Faceplate – use with a 3012, 3024, 30LC, or 30RS Mechanism, see pg 11 for more details.

NOTE: There may be variations in physical size or electrical characteristics between manufacturers. Information in the above chart based on manufacturers' catalogs and reference should be made to manufacturer's catalog for complete detail comparisons.





***The only electric strike manufacturer headquartered in the USA.***

## **TRINE ACCESS TECHNOLOGY**

2 Parklawn Drive, Suite F  
Bethel, CT 06801

PH: 203-730-1756 || FX:203-730-1781  
[www.trineonline.com](http://www.trineonline.com)

**Prices effective March 17, 2025**  
Prices subject to change without notice.

